



This Booklet contains **24** pages.

FF

Do not open this Test Booklet until you are asked to do so.

Read carefully the Instructions on the Back Cover of this Test Booklet.

Important Instructions :

1. The Answer Sheet is inside this Test Booklet. When you are directed to open the Test Booklet, take out the Answer Sheet and fill in the particulars on **Side-1** and **Side-2** carefully with **blue/black** ball point pen only.
2. The test is of **3 hours** duration and this Test Booklet contains **180** questions. Each question carries **4** marks. For each correct response, the candidate will get **4** marks. For each incorrect response, **one mark** will be deducted from the total scores. The maximum marks are 720.
3. Use **Blue/Black Ball Point Pen only** for writing particulars on this page/markings responses.
4. Rough work is to be done on the space provided for this purpose in the Test Booklet only.
5. **On completion of the test, the candidate must hand over the Answer Sheet to the Invigilator before leaving the Room/Hall. The candidates are allowed to take away this Test Booklet with them.**
6. The CODE for this Booklet is **FF**. Make sure that the CODE printed on **Side-2** of the Answer Sheet is the same as that on this Test Booklet. In case of discrepancy, the candidate should immediately report the matter to the Invigilator for replacement of both the Test Booklet and the Answer Sheet.
7. The candidates should ensure that the Answer Sheet is not folded. Do not make any stray marks on the Answer Sheet. Do not write your Roll No. anywhere else except in the specified space in the Test Booklet/Answer Sheet.
8. Use of white fluid for correction is **not** permissible on the Answer Sheet.

Name of the Candidate (in Capitals) : _____

Roll Number : in figures _____

: in words _____

Centre of Examination (in Capitals) : _____

Candidate's Signature : _____ Invigilator's Signature : _____

Facsimile signature stamp of

Centre Superintendent : _____

1. The geometry and magnetic behaviour of the complex $[\text{Ni}(\text{CO})_4]$ are
- (1) square planar geometry and diamagnetic
 - (2) tetrahedral geometry and diamagnetic
 - (3) square planar geometry and paramagnetic
 - (4) tetrahedral geometry and paramagnetic
2. Iron carbonyl, $\text{Fe}(\text{CO})_5$ is
- (1) tetranuclear
 - (2) mononuclear
 - (3) trinuclear
 - (4) dinuclear
3. Which one of the following ions exhibits d-d transition and paramagnetism as well ?
- (1) CrO_4^{2-}
 - (2) $\text{Cr}_2\text{O}_7^{2-}$
 - (3) MnO_4^-
 - (4) MnO_4^{2-}
4. The type of isomerism shown by the complex $[\text{CoCl}_2(\text{en})_2]$ is
- (1) Geometrical isomerism
 - (2) Coordination isomerism
 - (3) Ionization isomerism
 - (4) Linkage isomerism
5. Match the metal ions given in Column I with the spin magnetic moments of the ions given in Column II and assign the **correct** code :
- | Column I | | Column II | |
|---------------------|----------------------|-----------|--|
| a. Co^{3+} | i. $\sqrt{8}$ B.M. | | |
| b. Cr^{3+} | ii. $\sqrt{35}$ B.M. | | |
| c. Fe^{3+} | iii. $\sqrt{3}$ B.M. | | |
| d. Ni^{2+} | iv. $\sqrt{24}$ B.M. | | |
| | v. $\sqrt{15}$ B.M. | | |
- | | a | b | c | d |
|-----|-----|----|-----|-----|
| (1) | iv | v | ii | i |
| (2) | i | ii | iii | iv |
| (3) | iv | i | ii | iii |
| (4) | iii | v | i | ii |
6. Which one of the following elements is unable to form MF_6^{3-} ion ?
- (1) Ga
 - (2) Al
 - (3) B
 - (4) In
7. The correct order of N-compounds in its decreasing order of oxidation states is
- (1) $\text{HNO}_3, \text{NO}, \text{N}_2, \text{NH}_4\text{Cl}$
 - (2) $\text{HNO}_3, \text{NO}, \text{NH}_4\text{Cl}, \text{N}_2$
 - (3) $\text{HNO}_3, \text{NH}_4\text{Cl}, \text{NO}, \text{N}_2$
 - (4) $\text{NH}_4\text{Cl}, \text{N}_2, \text{NO}, \text{HNO}_3$
8. Considering Ellingham diagram, which of the following metals can be used to reduce alumina ?
- (1) Fe
 - (2) Zn
 - (3) Mg
 - (4) Cu
9. Which of the following statements is **not** true for halogens ?
- (1) All form monobasic oxyacids.
 - (2) All are oxidizing agents.
 - (3) All but fluorine show positive oxidation states.
 - (4) Chlorine has the highest electron-gain enthalpy.
10. In the structure of ClF_3 , the number of lone pairs of electrons on central atom 'Cl' is
- (1) one
 - (2) two
 - (3) four
 - (4) three
11. The correct order of atomic radii in group 13 elements is
- (1) $\text{B} < \text{Al} < \text{In} < \text{Ga} < \text{Tl}$
 - (2) $\text{B} < \text{Al} < \text{Ga} < \text{In} < \text{Tl}$
 - (3) $\text{B} < \text{Ga} < \text{Al} < \text{Tl} < \text{In}$
 - (4) $\text{B} < \text{Ga} < \text{Al} < \text{In} < \text{Tl}$

12. Nitration of aniline in strong acidic medium also gives m-nitroaniline because

- (1) In spite of substituents nitro group always goes to only m-position.
- (2) In electrophilic substitution reactions amino group is meta directive.
- (3) In absence of substituents nitro group always goes to m-position.
- (4) In acidic (strong) medium aniline is present as anilinium ion.

13. Regarding cross-linked or network polymers, which of the following statements is **incorrect** ?

- (1) They contain covalent bonds between various linear polymer chains.
- (2) They are formed from bi- and tri-functional monomers.
- (3) Examples are bakelite and melamine.
- (4) They contain strong covalent bonds in their polymer chains.

14. The difference between amylose and amylopectin is

- (1) Amylopectin have 1 → 4 α-linkage and 1 → 6 α-linkage
- (2) Amylose have 1 → 4 α-linkage and 1 → 6 β-linkage
- (3) Amylopectin have 1 → 4 α-linkage and 1 → 6 β-linkage
- (4) Amylose is made up of glucose and galactose

15. A mixture of 2.3 g formic acid and 4.5 g oxalic acid is treated with conc. H₂SO₄. The evolved gaseous mixture is passed through KOH pellets. Weight (in g) of the remaining product at STP will be

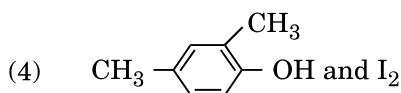
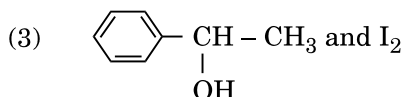
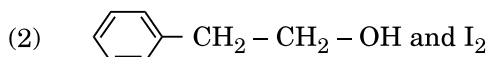
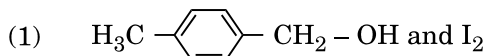
- (1) 1.4
- (2) 3.0
- (3) 2.8
- (4) 4.4

16. Which of the following oxides is most acidic in nature ?

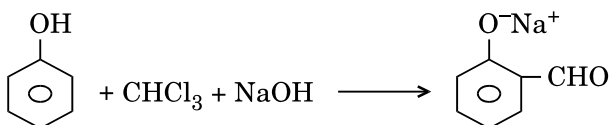
- (1) MgO
- (2) BeO
- (3) BaO
- (4) CaO

17. Compound A, C₈H₁₀O, is found to react with NaOI (produced by reacting Y with NaOH) and yields a yellow precipitate with characteristic smell.

A and Y are respectively



18. In the reaction



the electrophile involved is

- (1) dichloromethyl cation (CHCl_2^{\oplus})
- (2) formyl cation (CHO^{\oplus})
- (3) dichloromethyl anion (CHCl_2^{\ominus})
- (4) dichlorocarbene ($:\text{CCl}_2$)

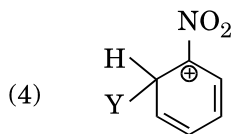
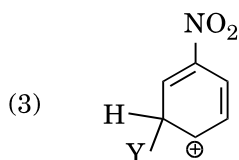
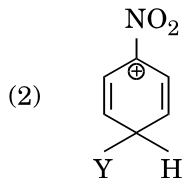
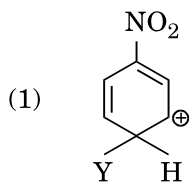
19. Carboxylic acids have higher boiling points than aldehydes, ketones and even alcohols of comparable molecular mass. It is due to their

- (1) formation of intramolecular H-bonding
- (2) formation of carboxylate ion
- (3) more extensive association of carboxylic acid via van der Waals force of attraction
- (4) formation of intermolecular H-bonding

20. Which of the following molecules represents the order of hybridisation sp^2 , sp^2 , sp , sp from left to right atoms ?

- (1) $HC \equiv C - C \equiv CH$
- (2) $CH_2 = CH - C \equiv CH$
- (3) $CH_2 = CH - CH = CH_2$
- (4) $CH_3 - CH = CH - CH_3$

21. Which of the following carbocations is expected to be most stable ?



22. Which of the following is correct with respect to -I effect of the substituents ? (R = alkyl)

- (1) $-NH_2 < -OR < -F$
- (2) $-NR_2 < -OR < -F$
- (3) $-NH_2 > -OR > -F$
- (4) $-NR_2 > -OR > -F$

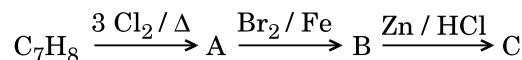
23. Which oxide of nitrogen is **not** a common pollutant introduced into the atmosphere both due to natural and human activity ?

- (1) N_2O_5
- (2) NO_2
- (3) N_2O
- (4) NO

24. The compound A on treatment with Na gives B, and with PCl_5 gives C. B and C react together to give diethyl ether. A, B and C are in the order

- (1) $C_2H_5OH, C_2H_6, C_2H_5Cl$
- (2) $C_2H_5OH, C_2H_5Cl, C_2H_5ONa$
- (3) $C_2H_5Cl, C_2H_6, C_2H_5OH$
- (4) $C_2H_5OH, C_2H_5ONa, C_2H_5Cl$

25. The compound C_7H_8 undergoes the following reactions :



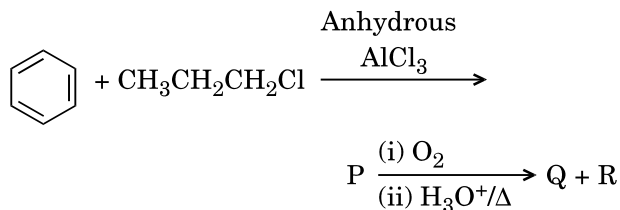
The product 'C' is

- (1) *m*-bromotoluene
- (2) *o*-bromotoluene
- (3) 3-bromo-2,4,6-trichlorotoluene
- (4) *p*-bromotoluene

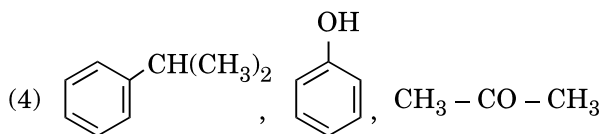
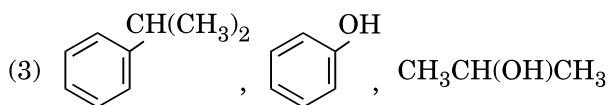
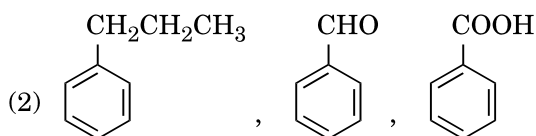
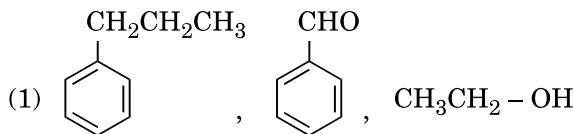
26. Hydrocarbon (A) reacts with bromine by substitution to form an alkyl bromide which by Wurtz reaction is converted to gaseous hydrocarbon containing less than four carbon atoms. (A) is

- (1) $CH \equiv CH$
- (2) $CH_2 = CH_2$
- (3) $CH_3 - CH_3$
- (4) CH_4

27. Identify the major products P, Q and R in the following sequence of reactions :



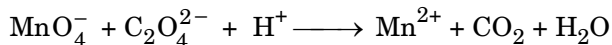
P Q R



28. Which of the following compounds can form a zwitterion ?

- (1) Aniline
- (2) Acetanilide
- (3) Benzoic acid
- (4) Glycine

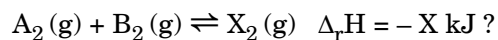
29. For the redox reaction



the correct coefficients of the reactants for the balanced equation are

- | | | | |
|-----|------------------|-----------------------------|--------------|
| | MnO_4^- | $\text{C}_2\text{O}_4^{2-}$ | H^+ |
| (1) | 16 | 5 | 2 |
| (2) | 2 | 5 | 16 |
| (3) | 2 | 16 | 5 |
| (4) | 5 | 16 | 2 |

30. Which one of the following conditions will favour maximum formation of the product in the reaction,



- (1) Low temperature and high pressure
- (2) Low temperature and low pressure
- (3) High temperature and high pressure
- (4) High temperature and low pressure

31. When initial concentration of the reactant is doubled, the half-life period of a zero order reaction

- (1) is halved
- (2) is doubled
- (3) is tripled
- (4) remains unchanged

32. The bond dissociation energies of X_2 , Y_2 and XY are in the ratio of 1 : 0.5 : 1. ΔH for the formation of XY is -200 kJ mol^{-1} . The bond dissociation energy of X_2 will be

- (1) 200 kJ mol^{-1}
- (2) 100 kJ mol^{-1}
- (3) 800 kJ mol^{-1}
- (4) 400 kJ mol^{-1}

33. The correction factor 'a' to the ideal gas equation corresponds to

- (1) density of the gas molecules
- (2) volume of the gas molecules
- (3) electric field present between the gas molecules
- (4) forces of attraction between the gas molecules

34. Given van der Waals constant for NH_3 , H_2 , O_2 and CO_2 are respectively 4.17, 0.244, 1.36 and 3.59, which one of the following gases is most easily liquefied ?

- (1) NH_3
- (2) H_2
- (3) O_2
- (4) CO_2

35. Following solutions were prepared by mixing different volumes of NaOH and HCl of different concentrations :

- a. 60 mL $\frac{\text{M}}{10}$ HCl + 40 mL $\frac{\text{M}}{10}$ NaOH
- b. 55 mL $\frac{\text{M}}{10}$ HCl + 45 mL $\frac{\text{M}}{10}$ NaOH
- c. 75 mL $\frac{\text{M}}{5}$ HCl + 25 mL $\frac{\text{M}}{5}$ NaOH
- d. 100 mL $\frac{\text{M}}{10}$ HCl + 100 mL $\frac{\text{M}}{10}$ NaOH

pH of which one of them will be equal to 1 ?

- (1) b
- (2) a
- (3) d
- (4) c

36. The solubility of BaSO_4 in water is $2.42 \times 10^{-3} \text{ gL}^{-1}$ at 298 K. The value of its solubility product (K_{sp}) will be

(Given molar mass of $\text{BaSO}_4 = 233 \text{ g mol}^{-1}$)

- (1) $1.08 \times 10^{-10} \text{ mol}^2 \text{ L}^{-2}$
- (2) $1.08 \times 10^{-12} \text{ mol}^2 \text{ L}^{-2}$
- (3) $1.08 \times 10^{-14} \text{ mol}^2 \text{ L}^{-2}$
- (4) $1.08 \times 10^{-8} \text{ mol}^2 \text{ L}^{-2}$

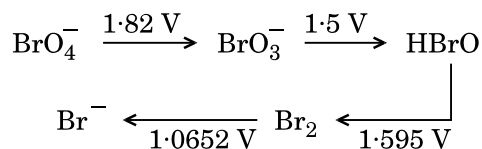
37. On which of the following properties does the coagulating power of an ion depend ?

- (1) The magnitude of the charge on the ion alone
- (2) Size of the ion alone
- (3) Both magnitude and sign of the charge on the ion
- (4) The sign of charge on the ion alone

38. The correct difference between first- and second-order reactions is that

- (1) the rate of a first-order reaction does not depend on reactant concentrations; the rate of a second-order reaction does depend on reactant concentrations
- (2) the half-life of a first-order reaction does not depend on $[\text{A}]_0$; the half-life of a second-order reaction does depend on $[\text{A}]_0$
- (3) a first-order reaction can be catalyzed; a second-order reaction cannot be catalyzed
- (4) the rate of a first-order reaction does depend on reactant concentrations; the rate of a second-order reaction does not depend on reactant concentrations

39. Consider the change in oxidation state of Bromine corresponding to different emf values as shown in the diagram below :



Then the species undergoing disproportionation is

- (1) BrO_3^-
- (2) BrO_4^-
- (3) Br_2
- (4) HBrO

40. In which case is the number of molecules of water maximum ?

- (1) 18 mL of water
- (2) 0.18 g of water
- (3) 0.00224 L of water vapours at 1 atm and 273 K
- (4) 10^{-3} mol of water

41. Among CaH_2 , BeH_2 , BaH_2 , the order of ionic character is

- (1) $\text{BeH}_2 < \text{CaH}_2 < \text{BaH}_2$
- (2) $\text{CaH}_2 < \text{BeH}_2 < \text{BaH}_2$
- (3) $\text{BeH}_2 < \text{BaH}_2 < \text{CaH}_2$
- (4) $\text{BaH}_2 < \text{BeH}_2 < \text{CaH}_2$

42. Magnesium reacts with an element (X) to form an ionic compound. If the ground state electronic configuration of (X) is $1s^2 2s^2 2p^3$, the simplest formula for this compound is
- (1) Mg_2X_3
 - (2) MgX_2
 - (3) Mg_2X
 - (4) Mg_3X_2
43. Iron exhibits bcc structure at room temperature. Above 900°C , it transforms to fcc structure. The ratio of density of iron at room temperature to that at 900°C (assuming molar mass and atomic radii of iron remains constant with temperature) is
- (1) $\frac{\sqrt{3}}{\sqrt{2}}$
 - (2) $\frac{4\sqrt{3}}{3\sqrt{2}}$
 - (3) $\frac{3\sqrt{3}}{4\sqrt{2}}$
 - (4) $\frac{1}{2}$
44. Consider the following species :
 CN^+ , CN^- , NO and CN
 Which one of these will have the highest bond order ?
- (1) NO
 - (2) CN^-
 - (3) CN^+
 - (4) CN
45. Which one is a **wrong** statement ?
- (1) Total orbital angular momentum of electron in 's' orbital is equal to zero.
 - (2) An orbital is designated by three quantum numbers while an electron in an atom is designated by four quantum numbers.
 - (3) The electronic configuration of N atom is

$1s^2$	$2s^2$	$2p_x^1$	$2p_y^1$	$2p_z^1$
$\uparrow\downarrow$	$\uparrow\downarrow$	\uparrow	\uparrow	\downarrow
 - (4) The value of m for d_{z^2} is zero.
46. Hormones secreted by the placenta to maintain pregnancy are
- (1) hCG, hPL, progesterones, prolactin
 - (2) hCG, hPL, estrogens, relaxin, oxytocin
 - (3) hCG, hPL, progesterones, estrogens
 - (4) hCG, progesterones, estrogens, glucocorticoids
47. The contraceptive 'SAHELPI'
- (1) blocks estrogen receptors in the uterus, preventing eggs from getting implanted.
 - (2) increases the concentration of estrogen and prevents ovulation in females.
 - (3) is an IUD.
 - (4) is a post-coital contraceptive.
48. The difference between spermiogenesis and spermiation is
- (1) In spermiogenesis spermatids are formed, while in spermiation spermatozoa are formed.
 - (2) In spermiogenesis spermatozoa are formed, while in spermiation spermatids are formed.
 - (3) In spermiogenesis spermatozoa from sertoli cells are released into the cavity of seminiferous tubules, while in spermiation spermatozoa are formed.
 - (4) In spermiogenesis spermatozoa are formed, while in spermiation spermatozoa are released from sertoli cells into the cavity of seminiferous tubules.
49. The amnion of mammalian embryo is derived from
- (1) ectoderm and mesoderm
 - (2) endoderm and mesoderm
 - (3) mesoderm and trophoblast
 - (4) ectoderm and endoderm

50. In a growing population of a country,
- (1) pre-reproductive individuals are more than the reproductive individuals.
 - (2) reproductive individuals are less than the post-reproductive individuals.
 - (3) reproductive and pre-reproductive individuals are equal in number.
 - (4) pre-reproductive individuals are less than the reproductive individuals.

51. All of the following are included in 'Ex-situ conservation' *except*

- (1) Wildlife safari parks
- (2) Sacred groves
- (3) Botanical gardens
- (4) Seed banks

52. Which one of the following population interactions is widely used in medical science for the production of antibiotics ?

- (1) Commensalism
- (2) Mutualism
- (3) Parasitism
- (4) Amensalism

53. Which part of poppy plant is used to obtain the drug "Smack" ?

- (1) Flowers
- (2) Latex
- (3) Roots
- (4) Leaves

54. Match the items given in Column I with those in Column II and select the **correct** option given below :

<i>Column I</i>		<i>Column II</i>	
a. Eutrophication	i. UV-B radiation		
b. Sanitary landfill	ii. Deforestation		
c. Snow blindness	iii. Nutrient enrichment		
d. Jhum cultivation	iv. Waste disposal		

	a	b	c	d
(1)	ii	i	iii	iv
(2)	i	iii	iv	ii
(3)	iii	iv	i	ii
(4)	i	ii	iv	iii

55. Which of the following gastric cells indirectly help in erythropoiesis ?

- (1) Chief cells
- (2) Mucous cells
- (3) Goblet cells
- (4) Parietal cells

56. Match the items given in Column I with those in Column II and select the **correct** option given below :

<i>Column I</i>		<i>Column II</i>	
a. Fibrinogen	i. Osmotic balance		
b. Globulin	ii. Blood clotting		
c. Albumin	iii. Defence mechanism		

	a	b	c
(1)	iii	ii	i
(2)	i	ii	iii
(3)	i	iii	ii
(4)	ii	iii	i

57. Calcium is important in skeletal muscle contraction because it

- (1) binds to troponin to remove the masking of active sites on actin for myosin.
- (2) activates the myosin ATPase by binding to it.
- (3) detaches the myosin head from the actin filament.
- (4) prevents the formation of bonds between the myosin cross bridges and the actin filament.

58. Which of the following is an occupational respiratory disorder ?

- (1) Anthracis
- (2) Silicosis
- (3) Botulism
- (4) Emphysema

59. Ciliates differ from all other protozoans in
- (1) using flagella for locomotion
 - (2) having a contractile vacuole for removing excess water
 - (3) using pseudopodia for capturing prey
 - (4) having two types of nuclei
60. Which of the following features is used to identify a male cockroach from a female cockroach ?
- (1) Presence of a boat shaped sternum on the 9th abdominal segment
 - (2) Presence of caudal styles
 - (3) Forewings with darker tegmina
 - (4) Presence of anal cerci
61. Which of the following organisms are known as chief producers in the oceans ?
- (1) Dinoflagellates
 - (2) Diatoms
 - (3) Cyanobacteria
 - (4) Euglenoids
62. Identify the vertebrate group of animals characterized by crop and gizzard in its digestive system.
- (1) Amphibia
 - (2) Reptilia
 - (3) Aves
 - (4) Osteichthyes
63. Which of the following animals does **not** undergo metamorphosis ?
- (1) Earthworm
 - (2) Tunicate
 - (3) Moth
 - (4) Starfish
64. Which one of these animals is **not** a homeotherm ?
- (1) *Macropus*
 - (2) *Chelone*
 - (3) *Camelus*
 - (4) *Psittacula*
65. The similarity of bone structure in the forelimbs of many vertebrates is an example of
- (1) Homology
 - (2) Analogy
 - (3) Convergent evolution
 - (4) Adaptive radiation
66. In which disease does mosquito transmitted pathogen cause chronic inflammation of lymphatic vessels ?
- (1) Elephantiasis
 - (2) Ascariasis
 - (3) Ringworm disease
 - (4) Amoebiasis
67. Conversion of milk to curd improves its nutritional value by increasing the amount of
- (1) Vitamin D
 - (2) Vitamin A
 - (3) Vitamin B₁₂
 - (4) Vitamin E
68. Which of the following characteristics represent 'Inheritance of blood groups' in humans ?
- a. Dominance
 - b. Co-dominance
 - c. Multiple allele
 - d. Incomplete dominance
 - e. Polygenic inheritance
- (1) b, c and e
 - (2) a, b and c
 - (3) b, d and e
 - (4) a, c and e
69. Which of the following is **not** an autoimmune disease ?
- (1) Psoriasis
 - (2) Rheumatoid arthritis
 - (3) Alzheimer's disease
 - (4) Vitiligo
70. Among the following sets of examples for divergent evolution, select the **incorrect** option :
- (1) Forelimbs of man, bat and cheetah
 - (2) Heart of bat, man and cheetah
 - (3) Brain of bat, man and cheetah
 - (4) Eye of octopus, bat and man

71. Match the items given in Column I with those in Column II and select the **correct** option given below :

<i>Column I</i>		<i>Column II</i>	
a. Glycosuria	i. Accumulation of uric acid in joints		
b. Gout	ii. Mass of crystallised salts within the kidney		
c. Renal calculi	iii. Inflammation in glomeruli		
d. Glomerular nephritis	iv. Presence of glucose in urine		
a	b	c	d
(1) iii	ii	iv	i
(2) i	ii	iii	iv
(3) ii	iii	i	iv
(4) iv	i	ii	iii

72. Match the items given in Column I with those in Column II and select the **correct** option given below :

<i>Column I</i> (Function)		<i>Column II</i> (Part of Excretory System)	
a. Ultrafiltration	i. Henle's loop		
b. Concentration of urine	ii. Ureter		
c. Transport of urine	iii. Urinary bladder		
d. Storage of urine	iv. Malpighian corpuscle		
	v. Proximal convoluted tubule		
a	b	c	d
(1) iv	v	ii	iii
(2) iv	i	ii	iii
(3) v	iv	i	ii
(4) v	iv	i	iii

73. Nissl bodies are mainly composed of

- (1) Proteins and lipids
- (2) DNA and RNA
- (3) Nucleic acids and SER
- (4) Free ribosomes and RER

74. Which of the following terms describe human dentition ?

- (1) Thecodont, Diphodont, Homodont
- (2) Thecodont, Diphodont, Heterodont
- (3) Pleurodont, Monophodont, Homodont
- (4) Pleurodont, Diphodont, Heterodont

75. Many ribosomes may associate with a single mRNA to form multiple copies of a polypeptide simultaneously. Such strings of ribosomes are termed as

- (1) Polysome
- (2) Polyhedral bodies
- (3) Plastidome
- (4) Nucleosome

76. Which of these statements is **incorrect** ?

- (1) Enzymes of TCA cycle are present in mitochondrial matrix.
- (2) Glycolysis occurs in cytosol.
- (3) Glycolysis operates as long as it is supplied with NAD that can pick up hydrogen atoms.
- (4) Oxidative phosphorylation takes place in outer mitochondrial membrane.

77. Which of the following events does **not** occur in rough endoplasmic reticulum ?

- (1) Protein folding
- (2) Protein glycosylation
- (3) Cleavage of signal peptide
- (4) Phospholipid synthesis

78. Select the **incorrect** match :

- (1) Lampbrush – Diplotene bivalents chromosomes
- (2) Allosomes – Sex chromosomes
- (3) Submetacentric – L-shaped chromosomes
- (4) Polytene – Oocytes of amphibians chromosomes

79. All of the following are part of an operon *except*

- (1) an operator
- (2) structural genes
- (3) an enhancer
- (4) a promoter

80. A woman has an X-linked condition on one of her X chromosomes. This chromosome can be inherited by

- (1) Only daughters
- (2) Only sons
- (3) Only grandchildren
- (4) Both sons and daughters

81. Match the items given in Column I with those in Column II and select the **correct** option given below :

Column I

Column II

- | | |
|------------------------|------------------------------------|
| a. Proliferative Phase | i. Breakdown of endometrial lining |
| b. Secretory Phase | ii. Follicular Phase |
| c. Menstruation | iii. Luteal Phase |

a **b** **c**

- (1) iii ii i
- (2) i iii ii
- (3) ii iii i
- (4) iii i ii

82. According to Hugo de Vries, the mechanism of evolution is

- (1) Multiple step mutations
- (2) Saltation
- (3) Phenotypic variations
- (4) Minor mutations

83. AGGTATCGCAT is a sequence from the coding strand of a gene. What will be the corresponding sequence of the transcribed mRNA ?

- (1) AGGUAUCGCAU
- (2) UGGTUTCGCAT
- (3) ACCUAUGCGAU
- (4) UCCAUAGCGUA

84. Which of the following is an amino acid derived hormone ?

- (1) Epinephrine
- (2) Ecdysone
- (3) Estradiol
- (4) Estriol

85. Which of the following structures or regions is **incorrectly** paired with its function ?

- (1) Medulla oblongata : controls respiration and cardiovascular reflexes.
- (2) Limbic system : consists of fibre tracts that interconnect different regions of brain; controls movement.
- (3) Hypothalamus : production of releasing hormones and regulation of temperature, hunger and thirst.
- (4) Corpus callosum : band of fibers connecting left and right cerebral hemispheres.

86. Which of the following hormones can play a significant role in osteoporosis ?

- (1) Aldosterone and Prolactin
- (2) Progesterone and Aldosterone
- (3) Estrogen and Parathyroid hormone
- (4) Parathyroid hormone and Prolactin

87. The transparent lens in the human eye is held in its place by

- (1) ligaments attached to the ciliary body
- (2) ligaments attached to the iris
- (3) smooth muscles attached to the iris
- (4) smooth muscles attached to the ciliary body

88. Which of the following options correctly represents the lung conditions in asthma and emphysema, respectively ?

- (1) Inflammation of bronchioles; Decreased respiratory surface
- (2) Increased number of bronchioles; Increased respiratory surface
- (3) Increased respiratory surface; Inflammation of bronchioles
- (4) Decreased respiratory surface; Inflammation of bronchioles

89. Match the items given in Column I with those in Column II and select the **correct** option given below :

Column I

Column II

- | | |
|--------------------|--|
| a. Tricuspid valve | i. Between left atrium and left ventricle |
| b. Bicuspid valve | ii. Between right ventricle and pulmonary artery |
| c. Semilunar valve | iii. Between right atrium and right ventricle |

a b c

- (1) iii i ii
- (2) i iii ii
- (3) i ii iii
- (4) ii i iii

90. Match the items given in Column I with those in Column II and select the **correct** option given below :

Column I

Column II

- | | |
|-------------------------------|--------------------|
| a. Tidal volume | i. 2500 – 3000 mL |
| b. Inspiratory Reserve volume | ii. 1100 – 1200 mL |
| c. Expiratory Reserve volume | iii. 500 – 550 mL |
| d. Residual volume | iv. 1000 – 1100 mL |

a b c d

- (1) iii ii i iv
- (2) iii i iv ii
- (3) i iv ii iii
- (4) iv iii ii i

91. Casparian strips occur in

- (1) Epidermis
- (2) Pericycle
- (3) Cortex
- (4) Endodermis

92. Plants having little or no secondary growth are

- (1) Grasses
- (2) Deciduous angiosperms
- (3) Conifers
- (4) Cycads

93. Pneumatophores occur in

- (1) Halophytes
- (2) Free-floating hydrophytes
- (3) Carnivorous plants
- (4) Submerged hydrophytes

94. Sweet potato is a modified

- (1) Stem
- (2) Adventitious root
- (3) Tap root
- (4) Rhizome

95. Secondary xylem and phloem in dicot stem are produced by

- (1) Apical meristems
- (2) Vascular cambium
- (3) Phellogen
- (4) Axillary meristems

96. Which of the following statements is **correct** ?

- (1) Ovules are not enclosed by ovary wall in gymnosperms.
- (2) *Selaginella* is heterosporous, while *Salvinia* is homosporous.
- (3) Horsetails are gymnosperms.
- (4) Stems are usually unbranched in both *Cycas* and *Cedrus*.

97. Select the **wrong** statement :

- (1) Cell wall is present in members of Fungi and Plantae.
- (2) Mushrooms belong to Basidiomycetes.
- (3) Pseudopodia are locomotory and feeding structures in Sporozoans.
- (4) Mitochondria are the powerhouse of the cell in all kingdoms except Monera.

98. Match the items given in Column I with those in Column II and select the **correct** option given below :

Column I Column II

- | | | |
|--------------|------|---|
| a. Herbarium | i. | It is a place having a collection of preserved plants and animals. |
| b. Key | ii. | A list that enumerates methodically all the species found in an area with brief description aiding identification. |
| c. Museum | iii. | Is a place where dried and pressed plant specimens mounted on sheets are kept. |
| d. Catalogue | iv. | A booklet containing a list of characters and their alternates which are helpful in identification of various taxa. |

- | | a | b | c | d |
|-----|-----|----|-----|----|
| (1) | i | iv | iii | ii |
| (2) | iii | ii | i | iv |
| (3) | ii | iv | iii | i |
| (4) | iii | iv | i | ii |

99. Winged pollen grains are present in

- (1) Mustard
- (2) *Cycas*
- (3) Mango
- (4) *Pinus*

100. After karyogamy followed by meiosis, spores are produced exogenously in

- (1) *Neurospora*
- (2) *Alternaria*
- (3) *Agaricus*
- (4) *Saccharomyces*

101. Which one is **wrongly** matched ?

- (1) Uniflagellate gametes – *Polysiphonia*
- (2) Biflagellate zoospores – Brown algae
- (3) Gemma cups – *Marchantia*
- (4) Unicellular organism – *Chlorella*

102. Which of the following elements is responsible for maintaining turgor in cells ?

- (1) Magnesium
- (2) Sodium
- (3) Potassium
- (4) Calcium

103. Oxygen is **not** produced during photosynthesis by

- (1) Green sulphur bacteria
- (2) *Nostoc*
- (3) *Cycas*
- (4) *Chara*

104. Double fertilization is

- (1) Fusion of two male gametes of a pollen tube with two different eggs
- (2) Fusion of one male gamete with two polar nuclei
- (3) Fusion of two male gametes with one egg
- (4) Syngamy and triple fusion

105. Which one of the following plants shows a very close relationship with a species of moth, where none of the two can complete its life cycle without the other ?

- (1) *Hydrilla*
- (2) *Yucca*
- (3) Banana
- (4) *Viola*

106. Pollen grains can be stored for several years in liquid nitrogen having a temperature of

- (1) – 120°C
- (2) – 80°C
- (3) – 196°C
- (4) – 160°C

107. What is the role of NAD⁺ in cellular respiration ?

- (1) It functions as an enzyme.
- (2) It functions as an electron carrier.
- (3) It is a nucleotide source for ATP synthesis.
- (4) It is the final electron acceptor for anaerobic respiration.

108. In which of the following forms is iron absorbed by plants ?

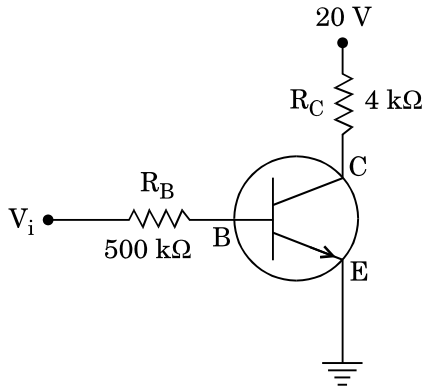
- (1) Ferric
- (2) Ferrous
- (3) Free element
- (4) Both ferric and ferrous

- 109.** The stage during which separation of the paired homologous chromosomes begins is
- (1) Pachytene
 - (2) Diplotene
 - (3) Diakinesis
 - (4) Zygotene
- 110.** Which of the following is true for nucleolus ?
- (1) Larger nucleoli are present in dividing cells.
 - (2) It is a membrane-bound structure.
 - (3) It takes part in spindle formation.
 - (4) It is a site for active ribosomal RNA synthesis.
- 111.** The Golgi complex participates in
- (1) Fatty acid breakdown
 - (2) Formation of secretory vesicles
 - (3) Respiration in bacteria
 - (4) Activation of amino acid
- 112.** Which of the following is **not** a product of light reaction of photosynthesis ?
- (1) ATP
 - (2) NADH
 - (3) NADPH
 - (4) Oxygen
- 113.** Stomatal movement is **not** affected by
- (1) Temperature
 - (2) Light
 - (3) O₂ concentration
 - (4) CO₂ concentration
- 114.** Which among the following is **not** a prokaryote ?
- (1) *Saccharomyces*
 - (2) *Mycobacterium*
 - (3) *Nostoc*
 - (4) *Oscillatoria*
- 115.** The two functional groups characteristic of sugars are
- (1) hydroxyl and methyl
 - (2) carbonyl and methyl
 - (3) carbonyl and phosphate
 - (4) carbonyl and hydroxyl
- 116.** Stomata in grass leaf are
- (1) Dumb-bell shaped
 - (2) Kidney shaped
 - (3) Rectangular
 - (4) Barrel shaped
- 117.** Select the **correct** match :
- (1) Alec Jeffreys – *Streptococcus pneumoniae*
 - (2) Alfred Hershey and Martha Chase – TMV
 - (3) Matthew Meselson and F. Stahl – *Pisum sativum*
 - (4) Francois Jacob and Jacques Monod – *Lac* operon
- 118.** The experimental proof for semiconservative replication of DNA was first shown in a
- (1) Fungus
 - (2) Bacterium
 - (3) Plant
 - (4) Virus
- 119.** Offsets are produced by
- (1) Meiotic divisions
 - (2) Mitotic divisions
 - (3) Parthenocarpary
 - (4) Parthenogenesis
- 120.** Which of the following flowers only once in its life-time ?
- (1) Bamboo species
 - (2) Jackfruit
 - (3) Mango
 - (4) Papaya
- 121.** Which of the following has proved helpful in preserving pollen as fossils ?
- (1) Pollenkitt
 - (2) Cellulosic intine
 - (3) Oil content
 - (4) Sporopollenin
- 122.** Which of the following pairs is **wrongly** matched ?
- (1) Starch synthesis in pea : Multiple alleles
 - (2) ABO blood grouping : Co-dominance
 - (3) XO type sex determination : Grasshopper
 - (4) T.H. Morgan : Linkage
- 123.** Select the **correct** statement :
- (1) Franklin Stahl coined the term “linkage”.
 - (2) Punnett square was developed by a British scientist.
 - (3) Spliceosomes take part in translation.
 - (4) Transduction was discovered by S. Altman.

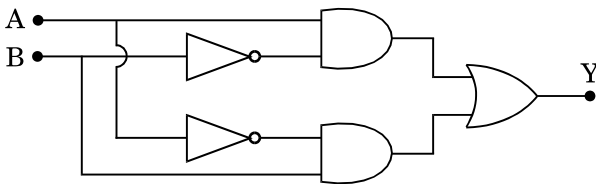
- 124.** The correct order of steps in Polymerase Chain Reaction (PCR) is
- (1) Extension, Denaturation, Annealing
 - (2) Annealing, Extension, Denaturation
 - (3) Denaturation, Extension, Annealing
 - (4) Denaturation, Annealing, Extension
- 125.** In India, the organisation responsible for assessing the safety of introducing genetically modified organisms for public use is
- (1) Indian Council of Medical Research (ICMR)
 - (2) Council for Scientific and Industrial Research (CSIR)
 - (3) Research Committee on Genetic Manipulation (RCGM)
 - (4) Genetic Engineering Appraisal Committee (GEAC)
- 126.** Which of the following is commonly used as a vector for introducing a DNA fragment in human lymphocytes ?
- (1) Retrovirus
 - (2) Ti plasmid
 - (3) λ phage
 - (4) pBR 322
- 127.** Use of bioresources by multinational companies and organisations without authorisation from the concerned country and its people is called
- (1) Bio-infringement
 - (2) Biopiracy
 - (3) Biodegradation
 - (4) Bioexploitation
- 128.** A 'new' variety of rice was patented by a foreign company, though such varieties have been present in India for a long time. This is related to
- (1) Co-667
 - (2) Sharbati Sonora
 - (3) Lerma Rojo
 - (4) Basmati
- 129.** Select the *correct* match :
- | | |
|-----------------------------------|------------------|
| (1) Ribozyme | – Nucleic acid |
| (2) $F_2 \times$ Recessive parent | – Dihybrid cross |
| (3) T.H. Morgan | – Transduction |
| (4) G. Mendel | – Transformation |
- 130.** Niche is
- (1) all the biological factors in the organism's environment
 - (2) the physical space where an organism lives
 - (3) the range of temperature that the organism needs to live
 - (4) the functional role played by the organism where it lives
- 131.** Which of the following is a secondary pollutant ?
- (1) CO
 - (2) CO_2
 - (3) SO_2
 - (4) O_3
- 132.** Natality refers to
- (1) Death rate
 - (2) Birth rate
 - (3) Number of individuals leaving the habitat
 - (4) Number of individuals entering a habitat
- 133.** World Ozone Day is celebrated on
- (1) 5th June
 - (2) 21st April
 - (3) 16th September
 - (4) 22nd April
- 134.** What type of ecological pyramid would be obtained with the following data ?
- Secondary consumer : 120 g
Primary consumer : 60 g
Primary producer : 10 g
- (1) Inverted pyramid of biomass
 - (2) Pyramid of energy
 - (3) Upright pyramid of numbers
 - (4) Upright pyramid of biomass
- 135.** In stratosphere, which of the following elements acts as a catalyst in degradation of ozone and release of molecular oxygen ?
- (1) Carbon
 - (2) Cl
 - (3) Fe
 - (4) Oxygen

136. A metallic rod of mass per unit length 0.5 kg m^{-1} is lying horizontally on a smooth inclined plane which makes an angle of 30° with the horizontal. The rod is not allowed to slide down by flowing a current through it when a magnetic field of induction 0.25 T is acting on it in the vertical direction. The current flowing in the rod to keep it stationary is
- (1) 7.14 A
 - (2) 5.98 A
 - (3) 14.76 A
 - (4) 11.32 A
137. A thin diamagnetic rod is placed vertically between the poles of an electromagnet. When the current in the electromagnet is switched on, then the diamagnetic rod is pushed up, out of the horizontal magnetic field. Hence the rod gains gravitational potential energy. The work required to do this comes from
- (1) the current source
 - (2) the magnetic field
 - (3) the lattice structure of the material of the rod
 - (4) the induced electric field due to the changing magnetic field
138. An inductor 20 mH , a capacitor $100 \mu\text{F}$ and a resistor 50Ω are connected in series across a source of emf, $V = 10 \sin 314 t$. The power loss in the circuit is
- (1) 0.79 W
 - (2) 0.43 W
 - (3) 2.74 W
 - (4) 1.13 W
139. Current sensitivity of a moving coil galvanometer is 5 div/mA and its voltage sensitivity (angular deflection per unit voltage applied) is 20 div/V . The resistance of the galvanometer is
- (1) 40Ω
 - (2) 25Ω
 - (3) 250Ω
 - (4) 500Ω
140. An object is placed at a distance of 40 cm from a concave mirror of focal length 15 cm . If the object is displaced through a distance of 20 cm towards the mirror, the displacement of the image will be
- (1) 30 cm away from the mirror
 - (2) 36 cm away from the mirror
 - (3) 30 cm towards the mirror
 - (4) 36 cm towards the mirror
141. An em wave is propagating in a medium with a velocity $\vec{V} = V \hat{i}$. The instantaneous oscillating electric field of this em wave is along $+y$ axis. Then the direction of oscillating magnetic field of the em wave will be along
- (1) $-z$ direction
 - (2) $+z$ direction
 - (3) $-y$ direction
 - (4) $-x$ direction
142. The refractive index of the material of a prism is $\sqrt{2}$ and the angle of the prism is 30° . One of the two refracting surfaces of the prism is made a mirror inwards, by silver coating. A beam of monochromatic light entering the prism from the other face will retrace its path (after reflection from the silvered surface) if its angle of incidence on the prism is
- (1) 60°
 - (2) 45°
 - (3) 30°
 - (4) zero
143. The magnetic potential energy stored in a certain inductor is 25 mJ , when the current in the inductor is 60 mA . This inductor is of inductance
- (1) 0.138 H
 - (2) 138.88 H
 - (3) 1.389 H
 - (4) 13.89 H

144. In the circuit shown in the figure, the input voltage V_i is 20 V, $V_{BE} = 0$ and $V_{CE} = 0$. The values of I_B , I_C and β are given by



- (1) $I_B = 40 \mu\text{A}$, $I_C = 10 \text{ mA}$, $\beta = 250$
 (2) $I_B = 25 \mu\text{A}$, $I_C = 5 \text{ mA}$, $\beta = 200$
 (3) $I_B = 20 \mu\text{A}$, $I_C = 5 \text{ mA}$, $\beta = 250$
 (4) $I_B = 40 \mu\text{A}$, $I_C = 5 \text{ mA}$, $\beta = 125$
145. In a p-n junction diode, change in temperature due to heating
- (1) affects only reverse resistance
 (2) affects only forward resistance
 (3) does not affect resistance of p-n junction
 (4) affects the overall V – I characteristics of p-n junction
146. In the combination of the following gates the output Y can be written in terms of inputs A and B as



- (1) $\overline{A \cdot B}$
 (2) $A \cdot \bar{B} + \bar{A} \cdot B$
 (3) $\overline{A \cdot B} + A \cdot B$
 (4) $\overline{A + B}$

147. Unpolarised light is incident from air on a plane surface of a material of refractive index ' μ '. At a particular angle of incidence ' i ', it is found that the reflected and refracted rays are perpendicular to each other. Which of the following options is correct for this situation ?

- (1) Reflected light is polarised with its electric vector parallel to the plane of incidence
 (2) Reflected light is polarised with its electric vector perpendicular to the plane of incidence
 (3) $i = \sin^{-1}\left(\frac{1}{\mu}\right)$
 (4) $i = \tan^{-1}\left(\frac{1}{\mu}\right)$

148. In Young's double slit experiment the separation d between the slits is 2 mm, the wavelength λ of the light used is 5896 Å and distance D between the screen and slits is 100 cm. It is found that the angular width of the fringes is 0.20° . To increase the fringe angular width to 0.21° (with same λ and D) the separation between the slits needs to be changed to

- (1) 1.8 mm
 (2) 1.9 mm
 (3) 2.1 mm
 (4) 1.7 mm

149. An astronomical refracting telescope will have large angular magnification and high angular resolution, when it has an objective lens of

- (1) small focal length and large diameter
 (2) large focal length and small diameter
 (3) large focal length and large diameter
 (4) small focal length and small diameter

- 150.** The ratio of kinetic energy to the total energy of an electron in a Bohr orbit of the hydrogen atom, is
- (1) 1 : 1
 - (2) 1 : -1
 - (3) 2 : -1
 - (4) 1 : -2
- 151.** An electron of mass m with an initial velocity $\vec{V} = V_0 \hat{i}$ ($V_0 > 0$) enters an electric field $\vec{E} = -E_0 \hat{i}$ ($E_0 = \text{constant} > 0$) at $t = 0$. If λ_0 is its de-Broglie wavelength initially, then its de-Broglie wavelength at time t is
- (1) $\frac{\lambda_0}{\left(1 + \frac{eE_0}{mV_0} t\right)}$
 - (2) $\lambda_0 \left(1 + \frac{eE_0}{mV_0} t\right)$
 - (3) $\lambda_0 t$
 - (4) λ_0
- 152.** For a radioactive material, half-life is 10 minutes. If initially there are 600 number of nuclei, the time taken (in minutes) for the disintegration of 450 nuclei is
- (1) 20
 - (2) 10
 - (3) 30
 - (4) 15
- 153.** When the light of frequency $2\nu_0$ (where ν_0 is threshold frequency), is incident on a metal plate, the maximum velocity of electrons emitted is v_1 . When the frequency of the incident radiation is increased to $5\nu_0$, the maximum velocity of electrons emitted from the same plate is v_2 . The ratio of v_1 to v_2 is
- (1) 1 : 2
 - (2) 1 : 4
 - (3) 4 : 1
 - (4) 2 : 1
- 154.** A tuning fork is used to produce resonance in a glass tube. The length of the air column in this tube can be adjusted by a variable piston. At room temperature of 27°C two successive resonances are produced at 20 cm and 73 cm of column length. If the frequency of the tuning fork is 320 Hz, the velocity of sound in air at 27°C is
- (1) 330 m/s
 - (2) 339 m/s
 - (3) 350 m/s
 - (4) 300 m/s
- 155.** The electrostatic force between the metal plates of an isolated parallel plate capacitor C having a charge Q and area A , is
- (1) independent of the distance between the plates.
 - (2) linearly proportional to the distance between the plates.
 - (3) proportional to the square root of the distance between the plates.
 - (4) inversely proportional to the distance between the plates.
- 156.** An electron falls from rest through a vertical distance h in a uniform and vertically upward directed electric field E . The direction of electric field is now reversed, keeping its magnitude the same. A proton is allowed to fall from rest in it through the same vertical distance h . The time of fall of the electron, in comparison to the time of fall of the proton is
- (1) smaller
 - (2) 5 times greater
 - (3) 10 times greater
 - (4) equal
- 157.** A pendulum is hung from the roof of a sufficiently high building and is moving freely to and fro like a simple harmonic oscillator. The acceleration of the bob of the pendulum is 20 m/s^2 at a distance of 5 m from the mean position. The time period of oscillation is
- (1) $2\pi \text{ s}$
 - (2) $\pi \text{ s}$
 - (3) 2 s
 - (4) 1 s

158. The power radiated by a black body is P and it radiates maximum energy at wavelength, λ_0 . If the temperature of the black body is now changed so that it radiates maximum energy at wavelength $\frac{3}{4}\lambda_0$, the power radiated by it becomes nP . The value of n is

- (1) $\frac{3}{4}$
- (2) $\frac{4}{3}$
- (3) $\frac{256}{81}$
- (4) $\frac{81}{256}$

159. Two wires are made of the same material and have the same volume. The first wire has cross-sectional area A and the second wire has cross-sectional area $3A$. If the length of the first wire is increased by Δl on applying a force F , how much force is needed to stretch the second wire by the same amount?

- (1) $9F$
- (2) $6F$
- (3) $4F$
- (4) F

160. A small sphere of radius ' r ' falls from rest in a viscous liquid. As a result, heat is produced due to viscous force. The rate of production of heat when the sphere attains its terminal velocity, is proportional to

- (1) r^3
- (2) r^2
- (3) r^5
- (4) r^4

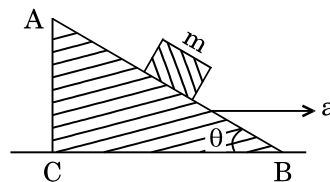
161. A sample of 0.1 g of water at 100°C and normal pressure ($1.013 \times 10^5 \text{ Nm}^{-2}$) requires 54 cal of heat energy to convert to steam at 100°C . If the volume of the steam produced is 167.1 cc, the change in internal energy of the sample, is

- (1) 104.3 J
- (2) 208.7 J
- (3) 42.2 J
- (4) 84.5 J

162. A toy car with charge q moves on a frictionless horizontal plane surface under the influence of a uniform electric field \vec{E} . Due to the force $q\vec{E}$, its velocity increases from 0 to 6 m/s in one second duration. At that instant the direction of the field is reversed. The car continues to move for two more seconds under the influence of this field. The average velocity and the average speed of the toy car between 0 to 3 seconds are respectively

- (1) 2 m/s, 4 m/s
- (2) 1 m/s, 3 m/s
- (3) 1 m/s, 3.5 m/s
- (4) 1.5 m/s, 3 m/s

163. A block of mass m is placed on a smooth inclined wedge ABC of inclination θ as shown in the figure. The wedge is given an acceleration ' a ' towards the right. The relation between a and θ for the block to remain stationary on the wedge is



- (1) $a = \frac{g}{\operatorname{cosec} \theta}$
- (2) $a = \frac{g}{\sin \theta}$
- (3) $a = g \cos \theta$
- (4) $a = g \tan \theta$

164. The moment of the force, $\vec{F} = 4\hat{i} + 5\hat{j} - 6\hat{k}$ at $(2, 0, -3)$, about the point $(2, -2, -2)$, is given by

- (1) $-8\hat{i} - 4\hat{j} - 7\hat{k}$
- (2) $-4\hat{i} - \hat{j} - 8\hat{k}$
- (3) $-7\hat{i} - 8\hat{j} - 4\hat{k}$
- (4) $-7\hat{i} - 4\hat{j} - 8\hat{k}$

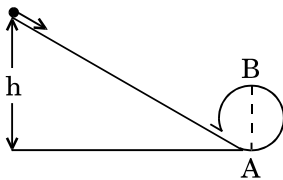
165. A student measured the diameter of a small steel ball using a screw gauge of least count 0.001 cm. The main scale reading is 5 mm and zero of circular scale division coincides with 25 divisions above the reference level. If screw gauge has a zero error of -0.004 cm, the correct diameter of the ball is

- (1) 0.521 cm
- (2) 0.525 cm
- (3) 0.053 cm
- (4) 0.529 cm

166. A moving block having mass m , collides with another stationary block having mass $4m$. The lighter block comes to rest after collision. When the initial velocity of the lighter block is v , then the value of coefficient of restitution (e) will be

- (1) 0.5
- (2) 0.25
- (3) 0.8
- (4) 0.4

167. A body initially at rest and sliding along a frictionless track from a height h (as shown in the figure) just completes a vertical circle of diameter $AB = D$. The height h is equal to



- (1) $\frac{3}{2}D$
- (2) D
- (3) $\frac{7}{5}D$
- (4) $\frac{5}{4}D$

168. Three objects, A : (a solid sphere), B : (a thin circular disk) and C : (a circular ring), each have the same mass M and radius R . They all spin with the same angular speed ω about their own symmetry axes. The amounts of work (W) required to bring them to rest, would satisfy the relation

- (1) $W_C > W_B > W_A$
- (2) $W_A > W_B > W_C$
- (3) $W_B > W_A > W_C$
- (4) $W_A > W_C > W_B$

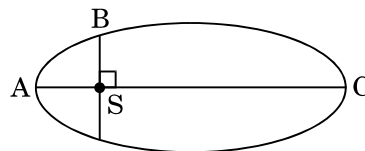
169. Which one of the following statements is **incorrect** ?

- (1) Rolling friction is smaller than sliding friction.
- (2) Limiting value of static friction is directly proportional to normal reaction.
- (3) Frictional force opposes the relative motion.
- (4) Coefficient of sliding friction has dimensions of length.

170. A solid sphere is rotating freely about its symmetry axis in free space. The radius of the sphere is increased keeping its mass same. Which of the following physical quantities would remain constant for the sphere ?

- (1) Angular velocity
- (2) Moment of inertia
- (3) Rotational kinetic energy
- (4) Angular momentum

171. The kinetic energies of a planet in an elliptical orbit about the Sun, at positions A, B and C are K_A , K_B and K_C , respectively. AC is the major axis and SB is perpendicular to AC at the position of the Sun S as shown in the figure. Then



- (1) $K_A < K_B < K_C$
- (2) $K_A > K_B > K_C$
- (3) $K_B < K_A < K_C$
- (4) $K_B > K_A > K_C$

172. A solid sphere is in rolling motion. In rolling motion a body possesses translational kinetic energy (K_t) as well as rotational kinetic energy (K_r) simultaneously. The ratio $K_t : (K_t + K_r)$ for the sphere is

- (1) 7 : 10
- (2) 5 : 7
- (3) 10 : 7
- (4) 2 : 5

173. If the mass of the Sun were ten times smaller and the universal gravitational constant were ten times larger in magnitude, which of the following is **not** correct ?

- (1) Raindrops will fall faster.
- (2) Walking on the ground would become more difficult.
- (3) Time period of a simple pendulum on the Earth would decrease.
- (4) 'g' on the Earth will not change.

174. At what temperature will the rms speed of oxygen molecules become just sufficient for escaping from the Earth's atmosphere ?

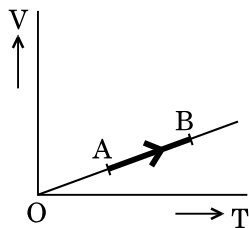
(Given :

Mass of oxygen molecule (m) = 2.76×10^{-26} kg

Boltzmann's constant $k_B = 1.38 \times 10^{-23}$ J K⁻¹)

- (1) 2.508×10^4 K
- (2) 8.360×10^4 K
- (3) 5.016×10^4 K
- (4) 1.254×10^4 K

175. The volume (V) of a monatomic gas varies with its temperature (T), as shown in the graph. The ratio of work done by the gas, to the heat absorbed by it, when it undergoes a change from state A to state B, is



- (1) $\frac{2}{5}$
- (2) $\frac{2}{3}$
- (3) $\frac{1}{3}$
- (4) $\frac{2}{7}$

176. The fundamental frequency in an open organ pipe is equal to the third harmonic of a closed organ pipe. If the length of the closed organ pipe is 20 cm, the length of the open organ pipe is

- (1) 13.2 cm
- (2) 8 cm
- (3) 12.5 cm
- (4) 16 cm

177. The efficiency of an ideal heat engine working between the freezing point and boiling point of water, is

- (1) 26.8%
- (2) 20%
- (3) 6.25%
- (4) 12.5%

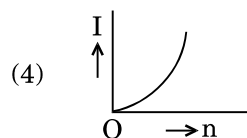
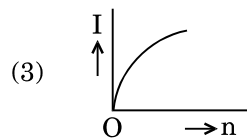
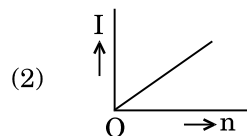
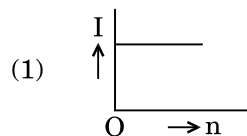
178. A carbon resistor of (47 ± 4.7) k Ω is to be marked with rings of different colours for its identification. The colour code sequence will be

- (1) Violet – Yellow – Orange – Silver
- (2) Yellow – Violet – Orange – Silver
- (3) Yellow – Green – Violet – Gold
- (4) Green – Orange – Violet – Gold

179. A set of 'n' equal resistors, of value 'R' each, are connected in series to a battery of emf 'E' and internal resistance 'R'. The current drawn is I. Now, the 'n' resistors are connected in parallel to the same battery. Then the current drawn from battery becomes 10 I. The value of 'n' is

- (1) 10
- (2) 11
- (3) 20
- (4) 9

180. A battery consists of a variable number 'n' of identical cells (having internal resistance 'r' each) which are connected in series. The terminals of the battery are short-circuited and the current I is measured. Which of the graphs shows the correct relationship between I and n ?



SPACE FOR ROUGH WORK

SPACE FOR ROUGH WORK

Read carefully the following instructions :

1. Each candidate must show on demand his/her Admit Card to the Invigilator.
2. No candidate, without special permission of the Superintendent or Invigilator, would leave his/her seat.
3. The candidates should not leave the Examination Hall without handing over their Answer Sheet to the Invigilator on duty and sign the Attendance Sheet twice. **Cases where a candidate has not signed the Attendance Sheet second time will be deemed not to have handed over the Answer Sheet and dealt with as an unfair means case.**
4. Use of Electronic/Manual Calculator is prohibited.
5. The candidates are governed by all Rules and Regulations of the examination with regard to their conduct in the Examination Hall. All cases of unfair means will be dealt with as per Rules and Regulations of this examination.
6. No part of the Test Booklet and Answer Sheet shall be detached under any circumstances.
7. The candidates will write the Correct Test Booklet Code as given in the Test Booklet/Answer Sheet in the Attendance Sheet.