

# Andhra Pradesh State Council of Higher Education

<b>Question Paper Name :</b>	Pharmacy PY 30th Sep 2020 Shift 2
<b>Subject Name :</b>	Pharmacy (PY)
<b>Creation Date :</b>	2020-09-30 17:27:27
<b>Duration :</b>	120
<b>Total Marks :</b>	120
<b>Display Marks:</b>	No
<b>Share Answer Key With Delivery Engine :</b>	Yes
<b>Actual Answer Key :</b>	Yes

## Pharmacy (PY)

<b>Group Number :</b>	1
<b>Group Id :</b>	29996542
<b>Group Maximum Duration :</b>	0
<b>Group Minimum Duration :</b>	120
<b>Show Attended Group? :</b>	No
<b>Edit Attended Group? :</b>	No
<b>Break time :</b>	0
<b>Group Marks :</b>	120
<b>Is this Group for Examiner? :</b>	No
<b>Revisit allowed for group Instructions? :</b>	Yes
<b>Maximum Instruction Time :</b>	0
<b>Minimum Instruction Time :</b>	0

## Pharmacy (PY)

<b>Section Id :</b>	29996542
<b>Section Number :</b>	1
<b>Mandatory or Optional :</b>	Mandatory
<b>Number of Questions :</b>	120
<b>Section Marks :</b>	120
<b>Display Number Panel :</b>	Yes
<b>Group All Questions :</b>	Yes
<b>Mark As Answered Required? :</b>	Yes
<b>Sub-Section Number :</b>	1
<b>Sub-Section Id :</b>	29996542
<b>Question Shuffling Allowed :</b>	Yes

**Question Number : 1 Question Id : 2999654921 Question Type : MCQ Display Question Number : Yes Is Question Mandatory : No Single Line Question Option : No Option Orientation : Vertical**

The roots of the following drugs effective, except \_\_\_\_\_.

Options :

1. Rauwoflia
2. Turmeric
3. Ipecacuanha
4. Aconite

Question Number : 2 Question Id : 2999654922 Question Type : MCQ Display Question Number : Yes Is Question Mandatory : No Single Line Question Option : No Option Orientation : Vertical

Andrographolide is active constituents of \_\_\_\_\_.

Options :

1. Gentian
2. Picrorhiza
3. Chirata
4. Kalmeh

Question Number : 3 Question Id : 2999654923 Question Type : MCQ Display Question Number : Yes Is Question Mandatory : No Single Line Question Option : No Option Orientation : Vertical

Glycosides are condensation products of \_\_\_\_\_.

Options :

1. sugar + aglycone
2. sugar + protein
3. fats + aglycone
4. sugar + fats



Question Number : 4 Question Id : 2999654924 Question Type : MCQ Display Question Number : Yes Is Question Mandatory : No Single Line Question Option : No Option Orientation : Vertical

The gum which is obtained from the endosperm of the seeds of *Cyamopsis tetragonolobus* belongs to the family?

Options :

1. Plantaginaceae
2. Leguminosae
3. Asteraceae
4. Combretaceae

Question Number : 5 Question Id : 2999654925 Question Type : MCQ Display Question Number : Yes Is Question Mandatory : No Single Line Question Option : No Option Orientation : Vertical

Plant tissue culture technique is a redefined method of \_\_\_\_\_.

Options :

1. DNA recombination
2. hybridization
3. vegetative propagation
4. selection

Question Number : 6 Question Id : 2999654926 Question Type : MCQ Display Question Number : Yes Is Question Mandatory : No Single Line Question Option : No Option Orientation : Vertical

Which of the following drug shows needle shaped crystals when treated with strong potassium hydroxide solution?

Options :

1. Clove
2. Fennel

3. Cinnamon

4. Dill

**Question Number : 7 Question Id : 2999654927 Question Type : MCQ Display Question Number : Yes Is Question Mandatory : No Single Line Question Option : No Option Orientation : Vertical**

The identification test for the detection of aloes is \_\_\_\_\_

**Options :**

1. Shinoda test

2. Keller killani test

3. Borax test

4. Legal's test

**Question Number : 8 Question Id : 2999654928 Question Type : MCQ Display Question Number : Yes Is Question Mandatory : No Single Line Question Option : No Option Orientation : Vertical**

An example for pentacyclic triterpenoid saponin is \_\_\_\_\_

**Options :**

1. Liquorice

2. Dioscorea

3. Rhubarb

4. Strophanthus

**Question Number : 9 Question Id : 2999654929 Question Type : MCQ Display Question Number : Yes Is Question Mandatory : No Single Line Question Option : No Option Orientation : Vertical**

Muramidase is an enzyme belonging to

**Options :**

1. Proteolytic enzyme
2. Amylolytic enzyme
3. Hydrolytic enzyme
4. Mucolytic enzyme

**Question Number : 10 Question Id : 2999654930 Question Type : MCQ Display Question Number : Yes Is Question Mandatory : No Single Line Question Option : No Option Orientation : Vertical**

Source of Veegum is

**Options :**

1. Natural, plant
2. Natural, Animal
3. Semisynthetic, mineral
4. Natural, mineral

**Question Number : 11 Question Id : 2999654931 Question Type : MCQ Display Question Number : Yes Is Question Mandatory : No Single Line Question Option : No Option Orientation : Vertical**

The active constituent of castor oil is

**Options :**

1. Lauric acid
2. Myristic acid
3. Ricinoleic acid
4. Stearic acid

**Question Number : 12 Question Id : 2999654932 Question Type : MCQ Display Question Number : Yes Is**



**Question Mandatory : No Single Line Question Option : No Option Orientation : Vertical**

**Morphine content in Opium is**

**Options :**

1. Less than 0.5%
2. 10-15%
3. 1-5%
4. 5-10%

**Question Number : 13 Question Id : 2999654933 Question Type : MCQ Display Question Number : Yes Is Question Mandatory : No Single Line Question Option : No Option Orientation : Vertical**

**Dried latex of all of the drugs are used except**

**Options :**

1. Opium
2. Gatta parcha
3. Papain
4. Balsam

**Question Number : 14 Question Id : 2999654934 Question Type : MCQ Display Question Number : Yes Is Question Mandatory : No Single Line Question Option : No Option Orientation : Vertical**

**Which of the following herb used in treatment of dropsy?**

**Options :**

1. Rhubarb
2. Digitalis
3. Ashwagandha

4. Clove

**Question Number : 15 Question Id : 2999654935 Question Type : MCQ Display Question Number : Yes Is Question Mandatory : No Single Line Question Option : No Option Orientation : Vertical**

A powder that can be identified by numerous paracytic stomata is:

**Options :**

1. Datura
2. Senna
3. Vasaka
4. Belladonna

**Question Number : 16 Question Id : 2999654936 Question Type : MCQ Display Question Number : Yes Is Question Mandatory : No Single Line Question Option : No Option Orientation : Vertical**

Which of the following is prodrug of ampicillin?

**Options :**

1. Amoxicillin
2. Pivampicillin
3. Azlocillin
4. Nafcillin

**Question Number : 17 Question Id : 2999654937 Question Type : MCQ Display Question Number : Yes Is Question Mandatory : No Single Line Question Option : No Option Orientation : Vertical**

Which of the following is an enantiomeric mixture of d-hyoscyamine and l-hyoscyamine?

**Options :**

1. ipratropium

2. Atropine
3. Hyoscine
4. Tropine

Question Number : 18 Question Id : 2999654938 Question Type : MCQ Display Question Number : Yes Is Question Mandatory : No Single Line Question Option : No Option Orientation : Vertical

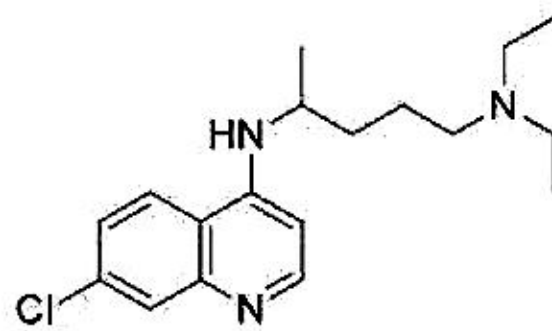
Which of the following COX inhibitor is classified as arylpropionic acid derivative?

Options :

1. Diclofenac
2. Ibuprofen
3. Sulindac
4. Piroxicam

Question Number : 19 Question Id : 2999654939 Question Type : MCQ Display Question Number : Yes Is Question Mandatory : No Single Line Question Option : No Option Orientation : Vertical

IUPAC name of chloroquine is \_\_\_\_\_.



Chloroquine

Options :

1. N'-(7-chloroquinolin-4-yl)-N,N-diethyl-pentane-1,4-diamine
2. N'-(2-chloroquinolin-4-yl)-N,N-diethyl-pentane-1,4-diamine
3. N'-(7-chloroquinolin-4-yl)-N,N-diethyl-butane-1,4-diamine



4. N'-(2-chloroquinolin-4-yl)-N,N-diethyl-pentane-1,6-diamine

Question Number : 20 Question Id : 2999654940 Question Type : MCQ Display Question Number : Yes Is Question Mandatory : No Single Line Question Option : No Option Orientation : Vertical

Phenoxy methyl penicillin is more suitable for oral absorption than benzyl penicillin because \_\_\_\_\_.

Options :

1. benzyl penicillin undergo degradation in stomach acidic conditions
2. benzyl penicillin undergo rapid first pass metabolism
3. benzyl penicillin is incompatible with milk
4. benzyl penicillin is irritant to gut wall

Question Number : 21 Question Id : 2999654941 Question Type : MCQ Display Question Number : Yes Is Question Mandatory : No Single Line Question Option : No Option Orientation : Vertical

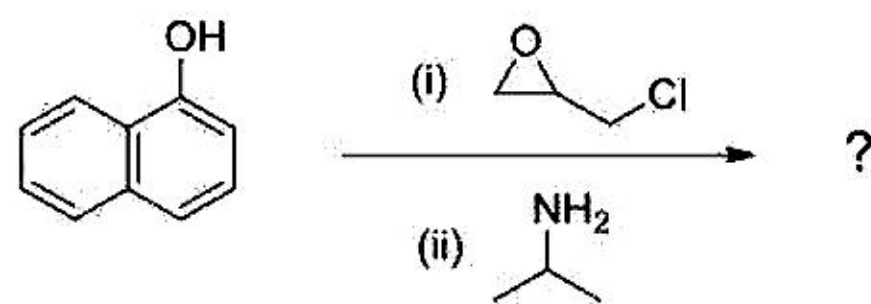
Which of the following is **NOT** a  $\beta$ -lactamase inhibitor?

Options :

1. Sulbactam
2. Aztreonam
3. Tazobactam
4. Clavulanic acid

Question Number : 22 Question Id : 2999654942 Question Type : MCQ Display Question Number : Yes Is Question Mandatory : No Single Line Question Option : No Option Orientation : Vertical

Which drug is synthesized by using the below synthetic scheme?



Options :

1. Atenolol
2. Propranolol
3. Sotolol
4. Naptholol

Question Number : 23 Question Id : 2999654943 Question Type : MCQ Display Question Number : Yes Is Question Mandatory : No Single Line Question Option : No Option Orientation : Vertical

Which of the following is a selective COX-2 inhibitor?

Options :

1. Diclofenac
2. Ibuprofen
3. Meloxicam
4. Indomethacin

Question Number : 24 Question Id : 2999654944 Question Type : MCQ Display Question Number : Yes Is Question Mandatory : No Single Line Question Option : No Option Orientation : Vertical

Which of the following is classified as biguanide hypoglycemic agent?

Options :

1. Glyburide
2. Metformin



3. Miglitol

4. Rosiglitazone

**Question Number : 25 Question Id : 2999654945 Question Type : MCQ Display Question Number : Yes Is Question Mandatory : No Single Line Question Option : No Option Orientation : Vertical**

Example for tricyclic H1 Receptor antagonist is \_\_\_\_\_.

**Options :**

1. Azatadine

2. Clamustine

3. Cyclizine

4. Doxylamine

**Question Number : 26 Question Id : 2999654946 Question Type : MCQ Display Question Number : Yes Is Question Mandatory : No Single Line Question Option : No Option Orientation : Vertical**

7,8-dihydro -6-keto derivative of morphine is \_\_\_\_\_.

**Options :**

1. Hydromorphone

2. Etorphine

3. Normorphine

4. Codeine

**Question Number : 27 Question Id : 2999654947 Question Type : MCQ Display Question Number : Yes Is Question Mandatory : No Single Line Question Option : No Option Orientation : Vertical**

A prodrug that releases COLTEROL on activation by lung esterase is \_\_\_\_\_.

**Options :**

1. Fenoterol



2. Formoterol
3. Albuterol
4. Bitolterol

**Question Number : 28 Question Id : 2999654948 Question Type : MCQ Display Question Number : Yes Is Question Mandatory : No Single Line Question Option : No Option Orientation : Vertical**

Which of the following undergoes benzylic oxidation converted into inactive benzoic acid derivative?

**Options :**

1. Tolbutamide
2. Glypizide
3. Glimenclamide
4. Nateglinide

**Question Number : 29 Question Id : 2999654949 Question Type : MCQ Display Question Number : Yes Is Question Mandatory : No Single Line Question Option : No Option Orientation : Vertical**

Nitroacetic acid is more acidic compared to acetic acid because of

**Options :**

1. Resonance effect
2. Inductive effect
3. Steric effect
4. Hydrogen bonding

**Question Number : 30 Question Id : 2999654950 Question Type : MCQ Display Question Number : Yes Is**

Question Mandatory : No Single Line Question Option : No Option Orientation : Vertical

The aromatic nucleus present in naproxen is \_\_\_\_\_.

Options :

1. Benzene
2. Naphthalene
3. Anthracene
4. Pyridine

Question Number : 31 Question Id : 2999654951 Question Type : MCQ Display Question Number : Yes Is Question Mandatory : No Single Line Question Option : No Option Orientation : Vertical

Amitriptyline is synthesized from the following starting material...

Options :

1. Phthalic anhydride
2. Terephthalic acid
3. Phthalamic acid
4. Phthalimide

Question Number : 32 Question Id : 2999654952 Question Type : MCQ Display Question Number : Yes Is Question Mandatory : No Single Line Question Option : No Option Orientation : Vertical

Cardiac glycosides have the following configuration in the aglycone part of the steroid nucleus \_\_\_\_\_.

Options :

1.  $5\alpha, 14\alpha$
2.  $5\alpha, 14\beta$
3.  $5\beta, 14\alpha$

4. 5 $\beta$ , 14 $\beta$

**Question Number : 33 Question Id : 2999654953 Question Type : MCQ Display Question Number : Yes Is Question Mandatory : No Single Line Question Option : No Option Orientation : Vertical**

Nicotine is derivative of

**Options :**

1. Quinoline
2. Pyrimidine
3. Pyridine
4. Isoquinoline

**Question Number : 34 Question Id : 2999654954 Question Type : MCQ Display Question Number : Yes Is Question Mandatory : No Single Line Question Option : No Option Orientation : Vertical**

Captopril is an N-acylated derivative of...

**Options :**

1. Phenylalanine
2. Histidine
3. Leucine
4. Proline

**Question Number : 35 Question Id : 2999654955 Question Type : MCQ Display Question Number : Yes Is Question Mandatory : No Single Line Question Option : No Option Orientation : Vertical**

$\alpha$ 1 Globulin is known as \_\_\_\_\_.

**Options :**

1. Orosomuroid
2. Transcortin



3. Ceruloplasmin
4. Transferrin

**Question Number : 36 Question Id : 2999654956 Question Type : MCQ Display Question Number : Yes Is Question Mandatory : No Single Line Question Option : No Option Orientation : Vertical**

Hydroxylation of Diazepam on C3 results in \_\_\_\_\_.

**Options :**

1. increased lipid solubility
2. increased potency
3. increased duration of action
4. increased bioavailability

**Question Number : 37 Question Id : 2999654957 Question Type : MCQ Display Question Number : Yes Is Question Mandatory : No Single Line Question Option : No Option Orientation : Vertical**

Isatin is the starting material for the synthesis of \_\_\_\_\_.

**Options :**

1. Dibucaine
2. Mepivacaine
3. Prilocaine
4. Bupivacaine

**Question Number : 38 Question Id : 2999654958 Question Type : MCQ Display Question Number : Yes Is Question Mandatory : No Single Line Question Option : No Option Orientation : Vertical**

In cephalosporins lactam ring is fused with \_\_\_\_\_.

**Options :**

1. Thiazolidine system
2. 1,3 dihydrothiazine system
3. Thiazine
4. Dehydro thiazolidine system

**Question Number : 39 Question Id : 2999654959 Question Type : MCQ Display Question Number : Yes Is Question Mandatory : No Single Line Question Option : No Option Orientation : Vertical**

4 – Methyl pyridine is oxidized and then it is heated with anhydrous hydrazine to give

**Options :**

1. INH
2. Pyrazinamide
3. Ethionamide
4. PAS

**Question Number : 40 Question Id : 2999654960 Question Type : MCQ Display Question Number : Yes Is Question Mandatory : No Single Line Question Option : No Option Orientation : Vertical**

The starting materials for the synthesis of epinephrine are

**Options :**

1. Catechol and Chloro propyl chloride
2. Catechol and Chloro acetyl chloride
3. Catechol and Chloro ethyl chloride
4. Catechol and Chloro Methyl chloride

**Question Number : 41 Question Id : 2999654961 Question Type : MCQ Display Question Number : Yes Is Question Mandatory : No Single Line Question Option : No Option Orientation : Vertical**



Ostwald's ripening defect is related to \_\_\_\_\_.

Options :

1. Coagulate formulation
2. Sedimentation rate
3. Crystal bridging
4. Interfacial tension

Question Number : 42 Question Id : 2999654962 Question Type : MCQ Display Question Number : Yes Is Question Mandatory : No Single Line Question Option : No Option Orientation : Vertical

If a drug shows small volume of distribution  $V_d$ , it is likely that this drug \_\_\_\_\_.

Options :

1. has a short biological half life
2. does not accumulate in various tissues and organs
3. not bioavailable
4. will not be effective

Question Number : 43 Question Id : 2999654963 Question Type : MCQ Display Question Number : Yes Is Question Mandatory : No Single Line Question Option : No Option Orientation : Vertical

Coulter counter is used to determine \_\_\_\_\_.

Options :

1. Particle size
2. Particle surface area
3. Particle volume
4. Particle shape



**Question Number : 44 Question Id : 2999654964 Question Type : MCQ Display Question Number : Yes Is Question Mandatory : No Single Line Question Option : No Option Orientation : Vertical**

Cascade impactor is used to evaluate

**Options :**

1. Oral drug delivery system
2. Parenteral drug delivery system
3. Pulmonary drug delivery system
4. Transdermal drug delivery system

**Question Number : 45 Question Id : 2999654965 Question Type : MCQ Display Question Number : Yes Is Question Mandatory : No Single Line Question Option : No Option Orientation : Vertical**

Water attack test is used for following type of glass

**Options :**

1. Type I
2. Type II
3. Type III
4. Type IV

**Question Number : 46 Question Id : 2999654966 Question Type : MCQ Display Question Number : Yes Is Question Mandatory : No Single Line Question Option : No Option Orientation : Vertical**

Negative value of Log P indicates

**Options :**

1. The compound is highly soluble in water
2. The compound is highly soluble in octanol
3. The compound has equal solubility in water and octanol

4. The compound is neither soluble in water nor in octanol

**Question Number : 47 Question Id : 2999654967 Question Type : MCQ Display Question Number : Yes Is Question Mandatory : No Single Line Question Option : No Option Orientation : Vertical**

Agglomeration in aerosols can be reduced by including

**Options :**

1. Anionic surfactant with HLB greater than 10
2. Cationic surfactant with HLB less than 10
3. Non-ionic surfactant with HLB greater than 10
4. Non-ionic surfactant with HLB less than 10

**Question Number : 48 Question Id : 2999654968 Question Type : MCQ Display Question Number : Yes Is Question Mandatory : No Single Line Question Option : No Option Orientation : Vertical**

10 mg of drug substance in 1000 ml of solvent gives a concentration of

**Options :**

1. 0.01 ppm
2. 0.1 ppm
3. 100 ppm
4. 10 ppm

**Question Number : 49 Question Id : 2999654969 Question Type : MCQ Display Question Number : Yes Is Question Mandatory : No Single Line Question Option : No Option Orientation : Vertical**

Which of the capsule size has the smallest capacity?

**Options :**

1. 4
2. 5



3. 0

4. 000

**Question Number : 50 Question Id : 2999654970 Question Type : MCQ Display Question Number : Yes Is Question Mandatory : No Single Line Question Option : No Option Orientation : Vertical**

Wurster process used in microencapsulation is \_\_\_\_\_.

**Options :**

1. Coacervation-phase separation
2. Air suspension method
3. Pan coating
4. Solvent evaporation method

**Question Number : 51 Question Id : 2999654971 Question Type : MCQ Display Question Number : Yes Is Question Mandatory : No Single Line Question Option : No Option Orientation : Vertical**

Plug flow problem arises in which of the following viscometers?

**Options :**

1. Ostwald
2. Cone and plate
3. Cup and bob
4. Falling sphere

**Question Number : 52 Question Id : 2999654972 Question Type : MCQ Display Question Number : Yes Is Question Mandatory : No Single Line Question Option : No Option Orientation : Vertical**

Dimethicone is used in Shampoos as

**Options :**

1. Foam booster



2. Conditioner
3. Cleansing agent
4. Stabilizer

**Question Number : 53 Question Id : 2999654973 Question Type : MCQ Display Question Number : Yes Is Question Mandatory : No Single Line Question Option : No Option Orientation : Vertical**

Which of the following polymer due to its positive charge employed in ophthalmic formulation to improve the adherence time of formulation?

**Options :**

1. Span
2. Chitosan
3. Tween
4. Cholesterol

**Question Number : 54 Question Id : 2999654974 Question Type : MCQ Display Question Number : Yes Is Question Mandatory : No Single Line Question Option : No Option Orientation : Vertical**

Mottling means \_\_\_\_\_.

**Options :**

1. Inadequate spreading of coating solution
2. Partial/complete separation of bottom portion of tablet
3. Unequal distribution of colour on a tablet
4. Formation of dull film, due to excessive humidity

Question Number : 55 Question Id : 2999654975 Question Type : MCQ Display Question Number : Yes Is  
Question Mandatory : No Single Line Question Option : No Option Orientation : Vertical

Bubble point test is done to determine \_\_\_\_\_.

Options :

1. the surface tension of the liquid in capillary tubes
2. the viscosity of the liquid in ampoules
3. the pH of a 1% solution
4. the volume of the solution stored in a specified container

Question Number : 56 Question Id : 2999654976 Question Type : MCQ Display Question Number : Yes Is  
Question Mandatory : No Single Line Question Option : No Option Orientation : Vertical

Which of the following inorganic compound is known as Epsom salt?

Options :

1. Zinc sulfate
2. Sodium potassium tartrate
3. Megnesium sulphate
4. Calcium hydroxide

Question Number : 57 Question Id : 2999654977 Question Type : MCQ Display Question Number : Yes Is  
Question Mandatory : No Single Line Question Option : No Option Orientation : Vertical

The coating defect associated with inadequate spreading of coating solution in coated tablets is \_\_\_\_\_.

Options :

1. Cracking
2. Blooming



3. Orange peeling
4. Blistering

**Question Number : 58 Question Id : 2999654978 Question Type : MCQ Display Question Number : Yes Is Question Mandatory : No Single Line Question Option : No Option Orientation : Vertical**

Geriatric population should be included in the following phase of clinical trials:

**Options :**

1. Phase I
2. Phase II
3. Phase III
4. Phase IV

**Question Number : 59 Question Id : 2999654979 Question Type : MCQ Display Question Number : Yes Is Question Mandatory : No Single Line Question Option : No Option Orientation : Vertical**

A drug (200 mg dose) administered in tablet form and as intravenous injection (50 mg dose) showed AUC of 100 and 200 microgram hr/mL, respectively. The absolute availability of the drug through oral administration is :

**Options :**

1. 125%
2. 250 %
3. 12.5%
4. 1.25%

**Question Number : 60 Question Id : 2999654980 Question Type : MCQ Display Question Number : Yes Is Question Mandatory : No Single Line Question Option : No Option Orientation : Vertical**



Measurement of inulin renal clearance is a measure for

Options :

1. Effective renal blood flow
2. Renal drug excretion rate
3. Active renal secretion
4. Glomerular filtration rate

Question Number : 61 Question Id : 2999654981 Question Type : MCQ Display Question Number : Yes Is Question Mandatory : No Single Line Question Option : No Option Orientation : Vertical

For an ideal suspension sedimentation volume should be \_\_\_\_\_.

Options :

1. Less than one
2. Zero
3. More than one
4. Equal to one

Question Number : 62 Question Id : 2999654982 Question Type : MCQ Display Question Number : Yes Is Question Mandatory : No Single Line Question Option : No Option Orientation : Vertical

Which of the following organism contains periplasmic flagella?

Options :

1. *Escheria coli*
2. *Salmonella typhi*
3. *Treponema pallidum*
4. *Pseudomonas aeruginosa*

Question Number : 63 Question Id : 2999654983 Question Type : MCQ Display Question Number : Yes Is  
Question Mandatory : No Single Line Question Option : No Option Orientation : Vertical

The purity of the BCG vaccine can be identified by using the following primary dye in staining process.

Options :

1. crystal violet
2. methylene blue
3. carbolfuchsin
4. malachite green

Question Number : 64 Question Id : 2999654984 Question Type : MCQ Display Question Number : Yes Is  
Question Mandatory : No Single Line Question Option : No Option Orientation : Vertical

Which of the following method doesn't kill endospores?

Options :

1. Moist heat sterilization
2. Dry heat sterilization
3. Fractional sterilization
4. Incineration

Question Number : 65 Question Id : 2999654985 Question Type : MCQ Display Question Number : Yes Is  
Question Mandatory : No Single Line Question Option : No Option Orientation : Vertical

In agglutination reactions, the antigen is a \_\_\_\_\_; in precipitation reactions, the antigen is a \_\_\_\_\_.

Options :

1. whole cell / soluble molecule
2. soluble molecule/ whole cell



3. protein / carbohydrate

4. carbohydrate / protein

**Question Number : 66 Question Id : 2999654986 Question Type : MCQ Display Question Number : Yes Is Question Mandatory : No Single Line Question Option : No Option Orientation : Vertical**

The normal distribution of ABO groups in pooled plasma is

**Options :**

1. equal numbers of A & O together with at least one B or AB donations

2. equal numbers of A & B together with at least one O or AB donations

3. equal numbers of B & O together with at least one A or AB donations

4. equal numbers of A & B together with at least one O donations

**Question Number : 67 Question Id : 2999654987 Question Type : MCQ Display Question Number : Yes Is Question Mandatory : No Single Line Question Option : No Option Orientation : Vertical**

Which of the following is the source of fibrinogen except

**Options :**

1. Dried human plasma

2. Dried human serum

3. Fresh frozen plasma

4. Fractionated plasma

**Question Number : 68 Question Id : 2999654988 Question Type : MCQ Display Question Number : Yes Is Question Mandatory : No Single Line Question Option : No Option Orientation : Vertical**

In RNA adenine normally pairs with:



**Options :**

1. Cytosine
2. Guanine
3. Uracil
4. Thymine

**Question Number : 69 Question Id : 2999654989 Question Type : MCQ Display Question Number : Yes Is Question Mandatory : No Single Line Question Option : No Option Orientation : Vertical**

All the statements regarding first order reaction are true except

**Options :**

1. Rate is dependent on concentration
2. Half life is changing parameter
3. T90% is independent of concentration
4. Logarithm of concentration vs time yields a straight line

**Question Number : 70 Question Id : 2999654990 Question Type : MCQ Display Question Number : Yes Is Question Mandatory : No Single Line Question Option : No Option Orientation : Vertical**

Number of tablets/weight of tablets required for carrying out friability test as per Indian

Pharmacopoeia 2018 is

**Options :**

1. 5 tablets of any weight
2. 10 tablets of any weight
3. 6.5 grams of tablets if the tablet weight is less than 650 mg

4. 20 tablets of any weight

**Question Number : 71 Question Id : 2999654991 Question Type : MCQ Display Question Number : Yes Is Question Mandatory : No Single Line Question Option : No Option Orientation : Vertical**

Schedule F3 is related to the

**Options :**

1. Standards for production of sera
2. Standards for ophthalmic preparation
3. Standards for surgical dressing
4. Standards for sterilized umbilical tapes

**Question Number : 72 Question Id : 2999654992 Question Type : MCQ Display Question Number : Yes Is Question Mandatory : No Single Line Question Option : No Option Orientation : Vertical**

Standard for disinfectant fluid comes under Schedule \_\_\_\_\_.

**Options :**

1. O
2. R
3. S
4. E

**Question Number : 73 Question Id : 2999654993 Question Type : MCQ Display Question Number : Yes Is Question Mandatory : No Single Line Question Option : No Option Orientation : Vertical**

Indian Pharmacopoeial Laboratory is located at \_\_\_\_\_.

**Options :**

1. Allahabad
2. Ghaziabad



3. Kasauli

4. New Delhi

**Question Number : 74 Question Id : 2999654994 Question Type : MCQ Display Question Number : Yes Is Question Mandatory : No Single Line Question Option : No Option Orientation : Vertical**

A drug is considered to be spurious.

**Options :**

1. if it consists in whole or in part of any filthy, putrid or decomposed substance
2. if it contains the color other than one which is prescribed
3. if it is not labelled in the prescribed manner
4. if it has been substituted wholly or in part by another drug substance

**Question Number : 75 Question Id : 2999654995 Question Type : MCQ Display Question Number : Yes Is Question Mandatory : No Single Line Question Option : No Option Orientation : Vertical**

Standards for mechanical contraceptives are given under Schedule

**Options :**

1. S
2. R
3. Q
4. T

**Question Number : 76 Question Id : 2999654996 Question Type : MCQ Display Question Number : Yes Is Question Mandatory : No Single Line Question Option : No Option Orientation : Vertical**

Which vitamin is useful in the alcoholism?

**Options :**



1. Pyridoxine
2. Phenobarbitone
3. Thiamine
4. Folic acid

**Question Number : 77 Question Id : 2999654997 Question Type : MCQ Display Question Number : Yes Is Question Mandatory : No Single Line Question Option : No Option Orientation : Vertical**

Both alpha and beta blocker is

**Options :**

1. Propranolol
2. Prazosin
3. Labetalol
4. Esmolol

**Question Number : 78 Question Id : 2999654998 Question Type : MCQ Display Question Number : Yes Is Question Mandatory : No Single Line Question Option : No Option Orientation : Vertical**

Which of these drugs is not used for treatment of systemic fungal infection ?

**Options :**

1. Fluconazole
2. Ketoconazole
3. Meconazole
4. Econazole

Question Number : 79 Question Id : 2999654999 Question Type : MCQ Display Question Number : Yes Is Question Mandatory : No Single Line Question Option : No Option Orientation : Vertical

Mechanisms of transmembrane signaling are the following EXCEPT \_\_\_\_\_.

Options :

1. Transmembrane receptors that bind and stimulate a protein tyrosine kinase
2. Gene replacement by the introduction of a therapeutic gene to correct a genetic effect
3. Ligand-gated ion channels that can be induced to open or close by binding a ligand
4. Transmembrane receptor protein that stimulates a GTP-binding signal transducer protein (G-protein) which in turn generates an intracellular second messenger

Question Number : 80 Question Id : 2999655000 Question Type : MCQ Display Question Number : Yes Is Question Mandatory : No Single Line Question Option : No Option Orientation : Vertical

Which of the following statement about beta blockers in hypertension is correct.

Options :

1. Propranolol is preferred to Atenolol in elderly patients
2. Beta blockers should never be combined with nifedipine
3. Beta blockers never combined with hydrochlorothiazide
4. Beta blockers should not be withdrawn abruptly

Question Number : 81 Question Id : 2999655001 Question Type : MCQ Display Question Number : Yes Is Question Mandatory : No Single Line Question Option : No Option Orientation : Vertical

What is insurmountable antagonism?

Options :

1. In presence of antagonist agonist will produce maximal response at higher concentrations



- In presence of antagonist agonist will never produce maximal response in spite of increasing agonist concentrations
- 2.
  3. In presence of antagonist the dose response curve for agonist shifts towards left side
  4. In presence of antagonist agonist produces synergistic effects

**Question Number : 82 Question Id : 2999655002 Question Type : MCQ Display Question Number : Yes Is Question Mandatory : No Single Line Question Option : No Option Orientation : Vertical**

Selective  $\beta_2$  - Receptor agonist is used in the treatment of

**Options :**

1. Asthma
2. Heart failure
3. Hypertension
4. Hypotension

**Question Number : 83 Question Id : 2999655003 Question Type : MCQ Display Question Number : Yes Is Question Mandatory : No Single Line Question Option : No Option Orientation : Vertical**

Tacrine produces beneficial effects in Alzheimers disease through

**Options :**

1. Inhibiting AChE
2. Activating AChE
3. Inhibiting MAO
4. Activating MAO

**Question Number : 84 Question Id : 2999655004 Question Type : MCQ Display Question Number : Yes Is Question Mandatory : No Single Line Question Option : No Option Orientation : Vertical**



Fexofenadine is an active metabolite of one of the following

**Options :**

1. Loratadine
2. Rupatidine
3. Tiprolidine
4. Terfenadine

**Question Number : 85 Question Id : 2999655005 Question Type : MCQ Display Question Number : Yes Is Question Mandatory : No Single Line Question Option : No Option Orientation : Vertical**

Torsades de Pointes are generally associated with \_\_\_\_\_.

**Options :**

1. Long QT interval
2. Long PR interval
3. Short QT interval
4. Short PR interval

**Question Number : 86 Question Id : 2999655006 Question Type : MCQ Display Question Number : Yes Is Question Mandatory : No Single Line Question Option : No Option Orientation : Vertical**

Ondansetron is a \_\_\_\_\_.

**Options :**

1. 5-HT3 Antagonist
2. 5-HT3 Agonist
3. H1-Antagonist
4. H1-Agonist

Question Number : 87 Question Id : 2999655007 Question Type : MCQ Display Question Number : Yes Is Question Mandatory : No Single Line Question Option : No Option Orientation : Vertical

Therapeutic Drug Monitoring is required for following drug?

Options :

1. Isoniazid
2. Rifampicin
3. Digoxin
4. Sulphonamide

Question Number : 88 Question Id : 2999655008 Question Type : MCQ Display Question Number : Yes Is Question Mandatory : No Single Line Question Option : No Option Orientation : Vertical

Propylthiouracil is used for the treatment of \_\_\_\_\_.

Options :

1. Hypothyroidism
2. Hyperthyroidism
3. Gynecomastia
4. Viral infections

Question Number : 89 Question Id : 2999655009 Question Type : MCQ Display Question Number : Yes Is Question Mandatory : No Single Line Question Option : No Option Orientation : Vertical

Metabolic transformation (phase 1) is \_\_\_\_\_.

Options :

1. Acetylation and methylation of substances
2. Transformation of substances due to oxidation, reduction or hydrolysis



3. Glucuronide formation
4. Binding to plasma proteins

**Question Number : 90 Question Id : 2999655010 Question Type : MCQ Display Question Number : Yes Is Question Mandatory : No Single Line Question Option : No Option Orientation : Vertical**

Urinary tract antiseptic is \_\_\_\_\_.

**Options :**

1. Nalidixic acid
2. Benzylpenicillin
3. Sulfadoxine
4. Cloxacillin

**Question Number : 91 Question Id : 2999655011 Question Type : MCQ Display Question Number : Yes Is Question Mandatory : No Single Line Question Option : No Option Orientation : Vertical**

Which of the following is the oral anticoagulant?

**Options :**

1. Heparin
2. Warfarin
3. Vitamin K
4. Danaparoid

**Question Number : 92 Question Id : 2999655012 Question Type : MCQ Display Question Number : Yes Is Question Mandatory : No Single Line Question Option : No Option Orientation : Vertical**

Which of the following general anesthetics is given by inhalation route?

**Options :**

1. Thiopental
2. Desflurane
3. Ketamine
4. Propofol

**Question Number : 93 Question Id : 2999655013 Question Type : MCQ Display Question Number : Yes Is Question Mandatory : No Single Line Question Option : No Option Orientation : Vertical**

High potency long duration local anesthetic is \_\_\_\_\_.

**Options :**

1. Tetracaine
2. Procaine
3. Lidocaine
4. Prilocaine

**Question Number : 94 Question Id : 2999655014 Question Type : MCQ Display Question Number : Yes Is Question Mandatory : No Single Line Question Option : No Option Orientation : Vertical**

Codeine acts as a cough sedative by \_\_\_\_\_.

**Options :**

1. Depressing cough center
2. Depressing bronchial secretion
3. Producing excess cough
4. Depressing pulmonary action

**Question Number : 95 Question Id : 2999655015 Question Type : MCQ Display Question Number : Yes Is**



**Question Mandatory : No Single Line Question Option : No Option Orientation : Vertical**

Peripherally direct acting muscle relaxant is \_\_\_\_\_.

**Options :**

1. Pancuronium
2. Decamethonium
3. Quinine
4. Succinylcholine

**Question Number : 96 Question Id : 2999655016 Question Type : MCQ Display Question Number : Yes Is Question Mandatory : No Single Line Question Option : No Option Orientation : Vertical**

Which one of the following detectors is not used in gas chromatography?

**Options :**

1. Flame ionization
2. Electron capture
3. Thermal conductivity
4. Bolometer

**Question Number : 97 Question Id : 2999655017 Question Type : MCQ Display Question Number : Yes Is Question Mandatory : No Single Line Question Option : No Option Orientation : Vertical**

Conductivity measurement is based on the principle of \_\_\_\_\_.

**Options :**

1. Wheatstone bridge
2. Potentiometer
3. Meter bridge
4. Polarimeter

Question Number : 98 Question Id : 2999655018 Question Type : MCQ Display Question Number : Yes Is Question Mandatory : No Single Line Question Option : No Option Orientation : Vertical

Which of the following reagents is commonly used as mulling reagent in IR spectroscopy ?

Options :

1.  $\text{CHCl}_3$
2. Nujol
3. Hydrocarbon
4. Chlorofluoro carbon oil

Question Number : 99 Question Id : 2999655019 Question Type : MCQ Display Question Number : Yes Is Question Mandatory : No Single Line Question Option : No Option Orientation : Vertical

Which one of the following electrodes is used in conductivity cell?

Options :

1. Dropping Mercury electrode
2. Platinum electrode
3. Calomel electrode
4. Glass electrode

Question Number : 100 Question Id : 2999655020 Question Type : MCQ Display Question Number : Yes Is Question Mandatory : No Single Line Question Option : No Option Orientation : Vertical

All of the given have same principle except \_\_\_\_\_.

Options :

1. HPTLC
2. GLC



3. HPLC

4. Paper chromatography

**Question Number : 101 Question Id : 2999655021 Question Type : MCQ Display Question Number : Yes Is Question Mandatory : No Single Line Question Option : No Option Orientation : Vertical**

In Potentiometer the current passing at the balance point is \_\_\_\_\_.

**Options :**

1. High

2. Low

3. Medium

4. Zero

**Question Number : 102 Question Id : 2999655022 Question Type : MCQ Display Question Number : Yes Is Question Mandatory : No Single Line Question Option : No Option Orientation : Vertical**

In HPLC, the analytical performance of the column improves when \_\_\_\_\_.

**Options :**

1. Particle diameter is reduced

2. Particle diameter is increased

3. Coarser particle are paired with shorter columns

4. Low temperature is used

**Question Number : 103 Question Id : 2999655023 Question Type : MCQ Display Question Number : Yes Is Question Mandatory : No Single Line Question Option : No Option Orientation : Vertical**

The IR radiation source-globar, is chemically made of \_\_\_\_\_.

**Options :**

1. Silicon carbide

2. Silicon disulphide
3. Zirconium oxide
4. Selenium disulphide

**Question Number : 104 Question Id : 2999655024 Question Type : MCQ Display Question Number : Yes Is Question Mandatory : No Single Line Question Option : No Option Orientation : Vertical**

Substances having nearly the same Rf values can be distinguished by \_\_\_\_\_.

**Options :**

1. Ascending – descending method
2. 2D paper chromatography
3. Circular paper chromatography
4. Radial technique

**Question Number : 105 Question Id : 2999655025 Question Type : MCQ Display Question Number : Yes Is Question Mandatory : No Single Line Question Option : No Option Orientation : Vertical**

The factors affecting diffusion current in polarography can be denoted by \_\_\_\_\_.

**Options :**

1. Nernst equation
2. Ilkovic equation
3. Lamberts law
4. Mark-Houwink equation

**Question Number : 106 Question Id : 2999655026 Question Type : MCQ Display Question Number : Yes Is Question Mandatory : No Single Line Question Option : No Option Orientation : Vertical**



Which of the following requires the most energy in IR?

Options :

1. Wagging
2. Twisting
3. Asymmetric bending
4. Asymmetric stretching

Question Number : 107 Question Id : 2999655027 Question Type : MCQ Display Question Number : Yes Is Question Mandatory : No Single Line Question Option : No Option Orientation : Vertical

Q7 guidelines of ICH meant for \_\_\_\_\_.

Options :

1. Good laboratory practice
2. Pharmaceutical development
3. Good manufacturing practice
4. Life cycle management

Question Number : 108 Question Id : 2999655028 Question Type : MCQ Display Question Number : Yes Is Question Mandatory : No Single Line Question Option : No Option Orientation : Vertical

pM indicators are used in \_\_\_\_\_.

Options :

1. Acid base titrations
2. Non-aqueous titrations
3. Gravimetry
4. Complexometric titrations

Question Number : 109 Question Id : 2999655029 Question Type : MCQ Display Question Number : Yes Is Question Mandatory : No Single Line Question Option : No Option Orientation : Vertical

Which of the following chromophore shows strong absorption in FTIR?

Options :

1. C-H
2. C-C
3. C=C
4. C=O

Question Number : 110 Question Id : 2999655030 Question Type : MCQ Display Question Number : Yes Is Question Mandatory : No Single Line Question Option : No Option Orientation : Vertical

The indicator electrode used in precipitation titrations is \_\_\_\_\_.

Options :

1. Platinum
2. Silver
3. Gold
4. Calomel

Question Number : 111 Question Id : 2999655031 Question Type : MCQ Display Question Number : Yes Is Question Mandatory : No Single Line Question Option : No Option Orientation : Vertical

Standard and test samples can be simultaneously analysed in \_\_\_\_\_.

Options :

1. HPLC
2. HPTLC
3. UHPLC



4. GC

**Question Number : 112 Question Id : 2999655032 Question Type : MCQ Display Question Number : Yes Is Question Mandatory : No Single Line Question Option : No Option Orientation : Vertical**

The following affects the quantitative analysis in HPLC \_\_\_\_\_.

**Options :**

1. Tailing factor
2. Retention time
3. Capacity factor
4. Theoretical plates

**Question Number : 113 Question Id : 2999655033 Question Type : MCQ Display Question Number : Yes Is Question Mandatory : No Single Line Question Option : No Option Orientation : Vertical**

Calibration of control of absorbance of UV-Visible spectrometer is performed by using\_\_\_\_\_.

**Options :**

1. Potassium chloride
2. Potassium dichromate
3. Holmium perchlorate
4. Potassium permanganate

**Question Number : 114 Question Id : 2999655034 Question Type : MCQ Display Question Number : Yes Is Question Mandatory : No Single Line Question Option : No Option Orientation : Vertical**

IR wave number for amine functional group is\_\_\_\_\_.

**Options :**

1.  $2850 - 2970 \text{ cm}^{-1}$

2. 2100 - 2300  $\text{cm}^{-1}$
3. 3300 - 3500  $\text{cm}^{-1}$
4. 3000 - 3100  $\text{cm}^{-1}$

Question Number : 115 Question Id : 2999655035 Question Type : MCQ Display Question Number : Yes Is Question Mandatory : No Single Line Question Option : No Option Orientation : Vertical

Radiation source used in spectrofluorimeter is \_\_\_\_\_.

Options :

1. Tungsten Lamp
2. Deuterium Lamp
3. Xenon lamp
4. Sodium vapour lamp

Question Number : 116 Question Id : 2999655036 Question Type : MCQ Display Question Number : Yes Is Question Mandatory : No Single Line Question Option : No Option Orientation : Vertical

\_\_\_\_\_ column is used in both reverse phase and normal phase chromatography.

Options :

1. Silica
2. Phenyl
3. Cyanide
4. End capped C-18

Question Number : 117 Question Id : 2999655037 Question Type : MCQ Display Question Number : Yes Is Question Mandatory : No Single Line Question Option : No Option Orientation : Vertical

The order of eluent strength of reversed phase solvents is \_\_\_\_\_.

Options :



1. Acetonitrile < methanol < water
2. Acetonitrile > methanol > water
3. Methanol > acetonitrile > water
4. Methanol < acetonitrile < water

Question Number : 118 Question Id : 2999655038 Question Type : MCQ Display Question Number : Yes Is Question Mandatory : No Single Line Question Option : No Option Orientation : Vertical

Halogenation in aromatic compounds \_\_\_\_\_ the fluorescence.

Options :

1. Increases
2. Inhibits
3. Reduces
4. Imparts

Question Number : 119 Question Id : 2999655039 Question Type : MCQ Display Question Number : Yes Is Question Mandatory : No Single Line Question Option : No Option Orientation : Vertical

The strong peak for carbonyl compounds is obtained in IR spectroscopy at \_\_\_\_\_  $\text{cm}^{-1}$ .

Options :

1. 3200
2. 2200
3. 1650
4. 950

Question Number : 120 Question Id : 2999655040 Question Type : MCQ Display Question Number : Yes Is Question Mandatory : No Single Line Question Option : No Option Orientation : Vertical

The unit of magnetic field in NMR is \_\_\_\_\_.

Options :

1. Cycles/sec

2. Pulse/sec

3. Gauss

4. Tesla