

## IELTS LISTENING PRACTICE PAPER

This module is the same for Academic and General IELTS.

The Listening module takes 40 minutes: 30 min for testing and 10 min for transferring your answers to the answer sheet.

<https://ielts-up.com/listening/14.1.mp3>

### SECTION 1. QUESTIONS 1-10

#### Questions 1-10

Complete the notes below.

Write **NO MORE THAN TWO WORDS AND/OR A NUMBER** for each answer.

#### BIRMINGHAM EXHIBITION

- Open in: **1.**  .
- Length of exhibition: **2.**  .
- A wide range of manufacturers will be showcased.
- Some cars are available to observe and others are for **3.**  .
- The **4.**  is prohibited to take into the museum.
- Every ticket includes one free photo.
- Price of the ticket: **5.** £  (in advance).
- Transfer to Mark **6.**  (Box Office Manager).
- Held in the **7.**  Palace this year.
- Not far from **8.**  .
- Website: www. **9.**  .com.
- Best way to contact: **10.**  .

#### SECTION: 2

<https://ielts-up.com/listening/14.2.mp3>

## SECTION 2. QUESTIONS 11-20

### Questions 11-15

Answer the questions below. Choose the correct letter, **A**, **B**, or **C**.

**11.** How many patients does the hospital consult every year?

- A.  3,000.
- B.  5,000.
- C.  11,000.

**12.** When can patients meet the female doctor?

- A.  On weekday mornings.
- B.  Three days a week.
- C.  Only on Mondays and Fridays.

**13.** Who is the expert on treating hearing loss?

- A.  Mr. Roberts.
- B.  Mr Green.
- C.  Mr. Edwards.

**14.** Where are patients recommended to buy their medicine?

- A.  The supermarket in the town.
- B.  Pharmacies nearby the city centre.

C.  The health care's pharmacy.

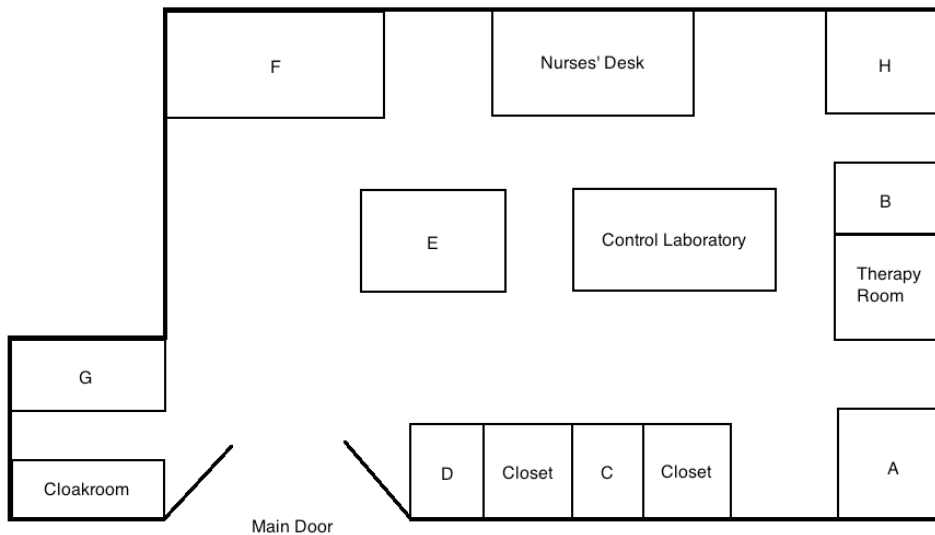
**15.** What will the patients be asked about whether they are willing to do?

- A.  Letting one student attend the consultation.
- B.  Asking postgraduate students to do treatment.
- C.  Meeting students in group discussion.

**Questions 16-20**

Label the map below.

Write the correct letter, **A-H**, next to questions 16-20.



**16.** Reception

**17.** Mr. Green's room

**18.** Medical Records Office

19. Surgery Room

20. Manager's Office

**SECTION 3**

<https://ielts-up.com/listening/14.3.mp3>

**SECTION 3. QUESTIONS 21-30**

**Questions 21-25**

What is the main opinion of each of the following people?

Choose **FIVE** answers from the box and write the correct letter, **A-G**, next to questions 21-25.

<b>Opinions</b>
A lightning restrictions
B alternative lighting
C reduce the number of insects
D decline in the number of species
E climate changes
F impacts on the growth of animals
G impacts on water quality

21. Ken Simpson

22. Dave Kepler

23. Sharon Grey

24. Maria Jackson

25. Barbara Swallow

### Questions 26 and 27

Choose the correct letter, **A**, **B** or **C**.

**26.** What does Jim think about the difference among species in natural and artificial light?

- A.  It makes no difference.
- B.  Species will die out in natural light.
- C.  Species will die out in artificial light.

**27.** One reason why Jim and Jane felt unsatisfied about the theories discussed in the lecture was that

- A.  governments didn't increase any spending on them.
- B.  most theories had nothing to do with the exam.
- C.  many theories lack solid proof in the field.

### Questions 28-30

Choose **THREE** letters, **A-G**.

Which **THREE** topics are they interested in studying in the future?

- A** quality of life tourism
- B** wildlife park animals
- C** migration birds
- D** animals living in rural areas
- E** animals living in tropical climate

- F** the impact of different environment on animals
- G** pandas in the zoo

#### SECTION 4

<https://ielts-up.com/listening/14.4.mp3>

### SECTION 4. QUESTIONS 31-40

#### Questions 31 and 32

Choose **TWO** letters, **A-E**

Which **TWO** aspects did the new rules at the end of the 19th century focus on?

- A** cooperation
- B** competition
- C** moral values
- D** player's physical protection
- E** business model

#### Questions 33-40

Complete the sentences below.

Write **ONLY ONE WORD** for each answer.

### Football in the UK

- At present the main reason why UK schools push football education is the pressure from **33.** .
- Prior to the 19th, football players used different **34.**  of rules.
- People attempted to standardise the rules from the whole **35.** , known as the 'Cambridge Rules' in 1848.
- Attendances were increasing due to the improvement of infrastructure and the **36.**  system.
- Football became popular and it is regarded as a **37.**  event.
- The football clubs were responsible for most of the **38.**  and development for the football association.
- **39.**  against other teams were also organised by the football clubs.
- In 1910s, **40.**  football players were approved of in the game.