

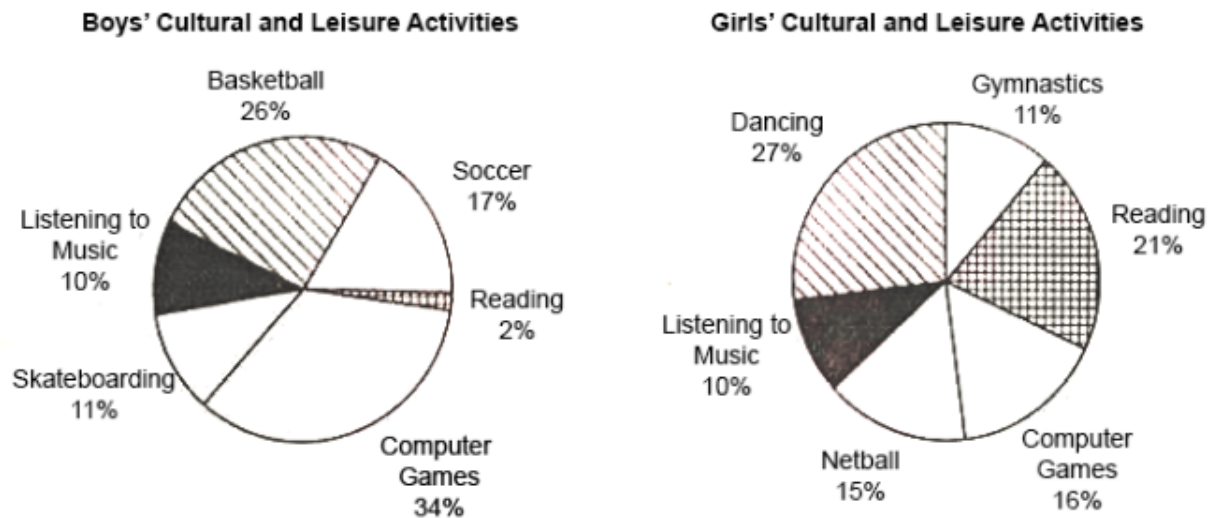
IELTS Academic Writing Task Sample Paper 23

Q1. You should spend about 20 minutes on this task.

The pie graphs below show the result of a survey of children's activities. The first graph shows the cultural and leisure activities that boys participate in, whereas the second graph shows the activities in which the girls participate.

Write a report describing the information shown in the two pie graphs.

Write at least 150 words.

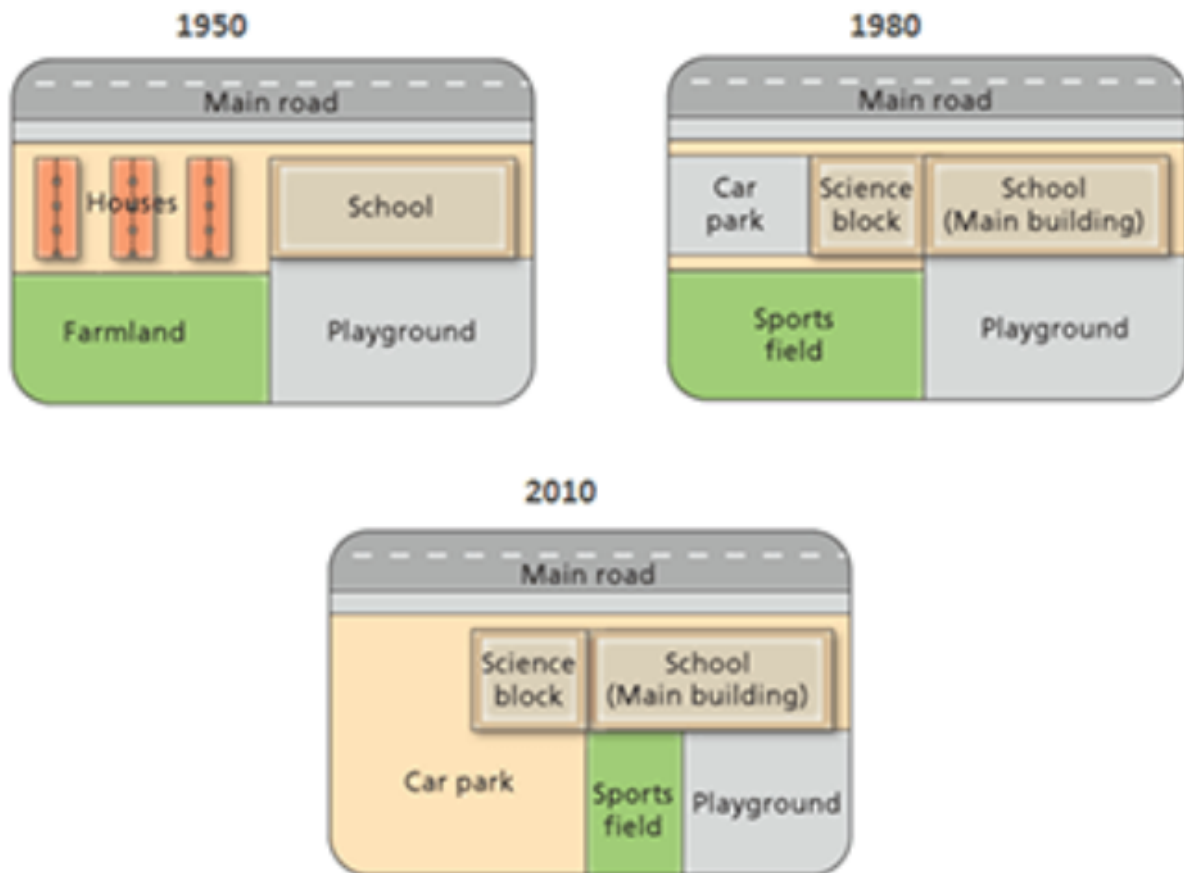


Q2. You should spend about 20 minutes on this task.

The diagrams below show the changes that have taken place at West park Secondary School since its construction in 1950.

Summarize the information by selecting and reporting the main features and make comparisons where relevant.

Write at least 150 words.



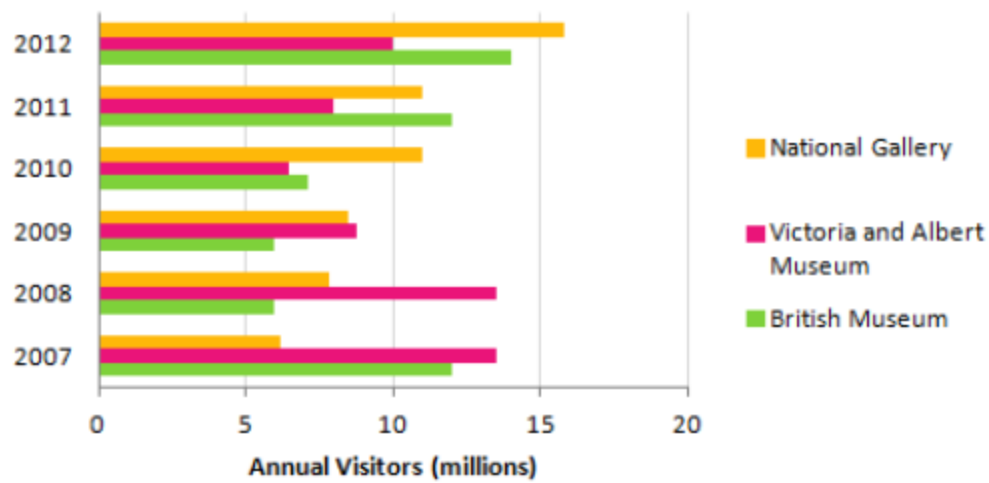
Q3. You should spend about 20 minutes on this task.

The bar chart shows the number of visitors to three London Museums between 2007 and 2012.

Summarize the information by selecting and reporting the main features, and make comparisons where relevant.

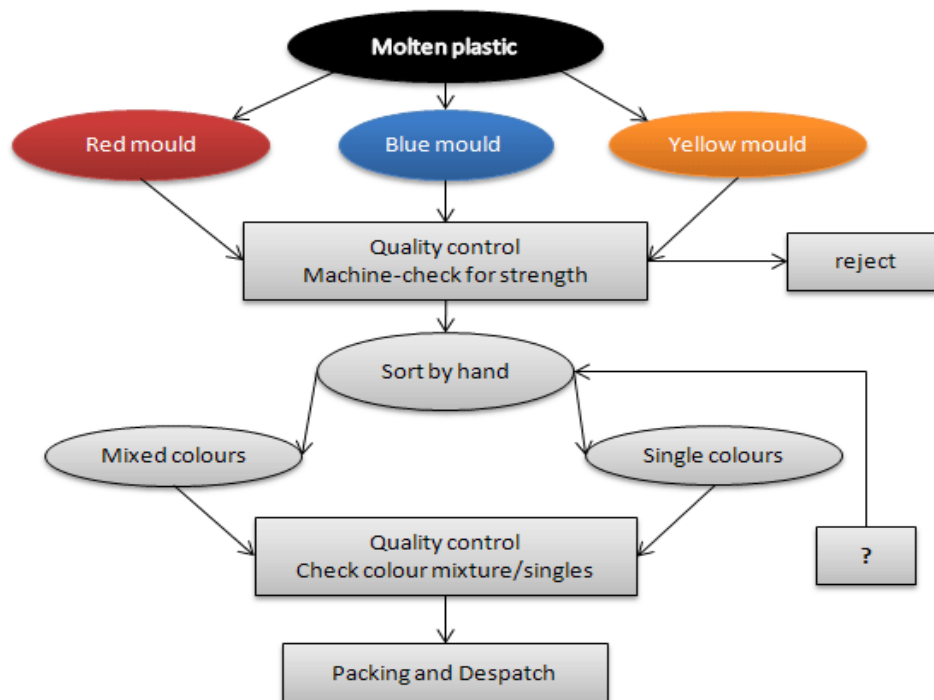
Write at least 150 words.

Museum Visitor Numbers, 2007-2012



Q4. The flowchart illustrates the production of coloured plastic paper clips in a small factory.

Write a report for a university tutor describing the production process.



Q5. The diagram below shows the production of electricity using a system called Ocean Thermal Energy Conversion (OTEC).

Write a report for a university lecturer describing the information below.

