



Practice, Learn and Achieve
Your Goal with Prepp

IBPS CLERK Exam

Mains Answer Key

Simplifying
Government Exams

 SSC CHSL	 IAS EXAM	 RRB NTPC	 NTSE	 CDS
 SSC CGL	 CBSE UGC NET	 IBPS PO	 NDA	
 SBI PO	 IBPS CLERK	 AFCAT	 SSC JE	 CTET
 CSIR UGC NET	 CAPF	 IBPS RRB		

www.prepp.in

###ANSWERS###

1. Ans. D.

The correct answer is option A. Part A, D and I are connected on the basis that an astronomer spotted a rock, which is tumbling in the solar system. Part B talks about a girl using her laptop. The logical part which follows is part F as the girl is listening something intently. This is followed by part H as it talks about holding the headphone upside down.

However, Part C and E can be connected, but there is no part in column III which conclude the sentence in correct manner. Thus, option D is the correct answer.

2. Ans. C.

In the above sentences, the part C is correctly followed by part I. It talks about the accused who has been conspiring with a senior royal, who is also the half brother of the King, mentioned in part I. Part F concludes the sentence. The only option which has CIF as an alternative is option C. We can negate the rest of the option as of now. ADG and BEH also makes grammatically correct and contextually sensible sentence. Thus, option C is the correct answer.

3. Ans. C.

Part A talks about atmosphere of some place. The next parts which can follow logically are part G and part F. It talks about a debate competition which are well attended due to electric atmosphere. Thus, AGF makes a correct sentence. Part B needs to be followed by a verb as it is ending with auxiliary verb 'have'. It is followed by part H as social media influencers can only turn against their social media platforms. It is correctly concluded by part D, as it talks about why the influencers leave social media. Part C and E makes a pair, it

does not have a correct conclusion in column III. Thus, only parts AGF and BHD forms a sentence, which is grammatically and contextually correct. Thus, option D is the correct answer.

4. Ans. A.

Part A is logically followed by part D as one can take vaccine shot against a disease, in this case, covid. Part AD is correctly followed by part G as the actress can share the news with her fans. Part ADG form a sentence.

Part B is followed part E we are talking about a city in north Germany. This is followed by part H as one can buy confiscate goods from auctions. Thus, parts BEH form a sentence.

Similarly, part C is followed by parts F as well I as they extend the definition of Renaissance, in a grammatically correct and contextual manner. Thus, parts CFI forms a sentence.

Thus, option A is the correct choice.

5. Ans. D.

Part A is followed by part D and part G as the definitions of nihilism has been discussed over history by various philosophers.

However, only part ADG makes a coherent sentence. The rest of the combinations are incoherent, contextually and grammatically incorrect. Thus, option D is the correct answer.

6. Ans. D.

The correct answer is D

7. Ans. C.

The correct answer is option C.

8. Ans. E.

The correct answer is E.

9. Ans. B.

As the passage revolves around pandemic and its impact on buying behaviour and retail which contains much of a elaboration than

necessary, the closest tone is Grandiose. Thus the correct answer is B.

10. Ans. A.

The correct answer is A.

11. Ans. C.

The correct answer is C.

12. Ans. C.

Assumption I: Refer to the following lines from the first and second paragraph of the passage: "Genghis Khan got his dying wish: despite attempts by archaeologists and scientists to find the Mongolian ruler's final resting place, the location remains a secret 800 years after his death."....."They were using SAR to penetrate layers of forest canopy in upper Mongolia, looking for the ruins of a burial structure."

If a site that has remained undiscoverable for 800 years is close to being discovered due to the SAR, it shows the researchers' confidence in its abilities, and ipso facto, makes it better than the other extant remote sensing devices. Thus, statement I can be assumed from the passage.

Assumption II: Refer to the following quote in the fifth paragraph of the passage: "As polar bears are driven further inland by [receding sea ice](#), denning areas and oil and gas activity increasingly overlap." Since polar bears keep getting driven inland as a result of receding sea ice, it is safe to conclude that global warming directly relates to their endangerment, since receding sea ice is caused by rising global temperatures.

Assumption III: Refer to the following quote in the last paragraph of the passage: "Getting **reliable** data on denning sites is vital." This directly negates the third assumption.

Thus, only assumptions I and II can be drawn from the passage, making option C the correct answer.

13. Ans. D.

Refer to the following quote from the seventh paragraph of the passage: "The aim is to find the right **frequency**, a sweet spot, that can penetrate snow but still detect a bear." This definitively negates the statement that the SAR is an **amplitude-based** remote sensing technology.

Thus, option D is the correct answer.

14. Ans. C.

While options A, B, and D state aspects of the passage, which discusses the researchers utilising AI to save polar bears from extinction, SAR using a frequency-based system, and the impact of receding sea levels on polar bears (arctic fauna), none of the focuses on the main aspect of the passage. The main theme of the passage is the application of remote sensing in locating the denning patterns of polar bears, and attempting to understand the same for the better protection of the cubs. While all the other aspects branch out from it, the main discussion continues to be on the application of the AI to locate and protect polar bear cubs.

Thus, option C is the correct answer.

15. Ans. B.

The meanings of the given tones are: Caustic: sarcastic in a scathing and bitter way.

Assertive: having or showing a confident and forceful personality.

Deprecatory: expressing disapproval; disapproving.

Condescending: having or showing an attitude of patronizing superiority.

Informative: providing useful or interesting information.

Since the passage provides information about the use the SAR is being put to, the tone of the passage is informative.

Thus, option B is the correct answer.

16. Ans. A.

Option A is the correct filler for the blank since it maintains the tone of the paragraph by describing the cubs as 'weak and undeveloped', in-keeping with the adjective 'vulnerable' used for them earlier in the paragraph.

The paragraph describes the cubs in question as being dependent on the mother. As such, if the mother abandons the den, the chances of survival of the cubs is reduced, not increased. This negates option C as a possible filler for the blank. Similarly, since the denning period is described as 'critical', and the cubs are described as 'vulnerable', adjectives like 'strong' and 'well developed' becomes contradictory to the tone of the paragraph. This negates option B as a possible filler as well.

17. Ans. D.

"Fortuitous" can best replace the word "serendipitous".

The meanings of the given words are:
Fortuitous: happening or produced by chance; accidental.

Serendipitous: come upon or found by accident; fortuitous.

Innovative: using new methods or ideas.

Aperture: a small and often narrow opening, especially one that allows light into a camera.

Camouflage: the use of leaves, branches, paints, and clothes for hiding soldiers or military equipment so that they cannot be seen against the area around them.

Vulnerable: able to be easily physically, emotionally, or mentally hurt, influenced, or attacked.

Thus, option D is the correct answer.

18. Ans. C.

Option D says that the lava from the said eruption "paved over a number of sea creatures", which does not

make sense. The sentence should say that it resulted in the death of these creatures instead.

19. Ans. B.

Damage is never 'lucky'.

Miscredited means to credit or 'attribute to' wrongly. This doesn't fit the whole idea of the sentence.

Also, since the subject is of the feminine gender (woman) the respective possessive pronoun should also be of the same gender. It should be 'her' instead of 'his'.

Hence, option B is the correct answer.

20. Ans. D.

"By" is used to show the medium or the way something is done. It is followed by the continuous form of the verb in such a context. So, it should be 'attending', not 'attend'.

'For which' indicates the purpose of something. But, 'dance in couples or small groups' is not the purpose behind 'best way to feel the rhythm'. Hence, the preposition "in" should be used. Thus, the correct answer is option E.

21. Ans. B.

A: Descriptive clause (can breed in your intestine) start with 'that' and non-descriptive clause (means they can also share the nutrition & fats of your food) start with 'which'. Here, "can breed in your intestine" is a necessary part, without which the sentence would appear incomplete. Hence it should take "that" before it. On the other hand, "means they can also share the nutrition & fats of your food", is an extra information, and should take the non- restrictive "which". Option A is wrong.

C: Here the term "not so machines" renders the sentence incorrect. Option C is wrong.

D: 'one of' implies that 'one among many'. So, it should be 'exercises'. Also, but is wrongly issued here

because 'strengthen your arms and upper body' and 'give you a great physique' are two events that do not contradict each other. Option D is wrong.

E: "However" is used while providing contradicting information to a *previously* mentioned data. Here this contradicting information is provided *after* the main data that too I the same sentence itself. Hence this data should be introduced with 'though' or 'although'. So, option E is wrong. Hence, the correct answer is B.

22. Ans. A.

B: When we talk about a range, we talk about many elements in the given category. So, the category (human emotion) should be in plural. Farce means a comedy characterized by broad satire and improbable situations. The correct word should be 'face'. Option B is wrong.

C: Adele's mother is older than her. So, when the emphasis is put on the fact that Adele begun young, she definitely didn't start at her mother's age. Option C is wrong.

D: Overseeing means watch and direct. Overlooking means look past, fail to notice. Since, Adele wanted to make a career out of it, she didn't overlook artistic development. Option D is wrong.

E: 'Not only' is followed by 'but also' with a clause in between. Option E is wrong.

Hence, the correct answer is A.

23. Ans. E.

Option A: 'To' is a preposition. 'Too' is the correct word is to be used. 'Too' is an adverb which means to a higher degree than is desirable, permissible, or possible; excessively. Also, 'or' is wrongly used here. We want to use 'and' because we want to denote both flora and fauna. so, option A is wrong.

Option B: Replace 'build' with 'built'. 'Build' is the present tense of the verb and 'built' is the past and the past participle of build. Since the sentence talks about a completed action in a time before now, we need to use past form of the verb i.e. 'built'. So, option B is wrong.

Option C: Since, 'hundred' is being used here as a noun here, its should be plural because the noun (corridors) is plural. So, option C is wrong.

Option D: 'Separates the Ladakh and Karakoram mountain ranges' is a descriptive clause and it lacks 'that'. So, option D is wrong.

Hence, the correct answer is E.

Note: 1) The idiomatic construction 'declared a (something)' is appropriate. 'As' when used in the role of a preposition refers to the function or character that someone or something has, which is inappropriate in this case.

2) 'Recently' is a relative expression which could be used to describe the occurrence of something a moment ago, a month ago, a decade ago. In the given case, the word has been used in comparison to the time when the caves were built/sculpted which can be assumed to have happened several decades ago. The year 1957, is relatively a recent period in comparison to that.

24. Ans. D.

The correct answer is D.

25. Ans. A.

Convert:

1. to (cause something or someone to) change in form or character.
2. to change to a new religion, belief, opinion, etc., or to make someone do this.

Change: to make or become different. This is a **synonym** of **convert** and has been aptly used in sentence 1.

Apostate: someone who has given up their religion or left a political party. This is an **antonym** of **convert** and has been aptly used in the second sentence.

Translate: to change words into a different language. This is a **synonym** of **convert** and is contextually incorrect in sentence 3. It is best replaced by the word 'conversation', meaning talk between two or more people in which thoughts, feelings, and ideas are expressed, questions are asked and answered, or news and information is exchanged.

Thus, option A is the correct answer.
26. Ans. B.

Remedial: improve someone's health when they are ill.

Therapeutic: having a healing effect; tending to make a person healthier. This is a **synonym** of **remedial** and has been aptly used in sentence 1.

Palliative: a drug or medical treatment that reduces pain. This is a **synonym** of **remedial** and has been aptly used in sentence 2.

Restorative: something that makes you feel better or more energetic if you are feeling tired or ill. This is a **synonym** of **remedial** and has been incorrectly used in sentence 3. A more appropriate word for the context of the sentence will be **restive**, meaning unwilling to be controlled or be patient.

Thus, option B is the correct answer.
27. Ans. D.

The term **abscond** means: leave hurriedly and secretly, typically to escape from custody or avoid arrest

Bolt means: move or run away suddenly in an attempt to escape.

Escape means: break free from confinement or control.

Thus, only I and III are synonymous to abscond. Thus, option D is the correct answer.

28. Ans. A.

The term **adamant** means: very sure; refusing to change your mind.

Resolved means: to decide something and be determined not to change your mind.

The rest of the words highlighted is not connected to the word adamant. Thus, option A is the correct answer.

29. Ans. E.

The passage is about plague and how it has developed over ages. However, statement A talks about two books getting published. Thus, statement A is not part of the passage. Thus option E is the correct answer.

30. Ans. B.

The article 'the' indicates the part 1 is the first part of the sentence. This makes option A and option B the probable answer. Now you can litter something with something. Here, history being littered with diseases like confetti.

However, if we look at option B, the sentence makes sense. Option B is the correct choice.

31. Ans. D.

The correct choice is option D. It was after studying the events only the health experts were able to plagues were a result of intrusion. Part 4 should begin the sentence. The only option with part 4 is option D.

32. Ans. A.

First of all, let us identify the sentence which is not as per the passage. The passage is about plague and how it has developed over ages. However, statement A talks about two books getting published. Thus, statement A is not part of the passage.

The first part of the passage is Part C. It introduces the topic of the passage, the pandemic over history. This is

followed by part E, which talks about the records of pandemic which is recorded in the human history. Part E and Part F forms a pair. This is because if part E introduces the events, in part F states on of the supposed cause of these events. Part F is followed by part B, as it contradicts the explanation given in part F. It states that if part F claims human intrusion in natural spaces cause pandemics, then part B argues that humans have been living with nature from time immemorial. Explaining part B, part D states that diseases which caused pandemics, like humans, have evolved to adapt to humanity over time.

Thus, the correct sequence is CEFBD. This makes option A the correct option.

33. Ans. D.

First of all, let us identify the sentence which is not as per the passage. The passage is about plague and how it has developed over ages. However, statement A talks about two books getting published. Thus, statement A is not part of the passage.

The first part of the passage is Part C. It introduces the topic of the passage, the pandemic over history. This is followed by part E, which talks about the records of pandemic which is recorded in the human history. Part E and Part F forms a pair. This is because if part E introduces the events, in part F states on of the supposed cause of these events. Part F is followed by part B, as it contradicts the explanation given in part F. It states that if part F claims human intrusion in natural spaces cause pandemics, then part B argues that humans have been living with nature from time immemorial. Explaining part B, part D states that diseases which caused pandemics,

like humans, have evolved to adapt to humanity over time.

Thus, the correct sequence is CEFBD. This makes option D the correct option.

34. Ans. A.

The mistakes in the sentence highlighted in part D is that 'broken' is a verb and we need an adverb to qualify the verb. 'Fresh' is an adjective and in order to make the sentence correct, we need to replace it with 'freshly'. Option A is the correct answer.

35. Ans. A.

Convert:

1. to (cause something or someone to) change in form or character.
2. to change to a new religion, belief, opinion, etc., or to make someone do this.

Change: to make or become different. This is a **synonym** of **convert** and has been aptly used in sentence 1.

Apostate: someone who has given up their religion or left a political party. This is an **antonym** of **convert** and has been aptly used in the second sentence.

Translate: to change words into a different language. This is a **synonym** of **convert** and is contextually incorrect in sentence 3. It is best replaced by the word 'conversation', meaning talk between two or more people in which thoughts, feelings, and ideas are expressed, questions are asked and answered, or news and information is exchanged.

Thus, option A is the correct answer.

36. Ans. B.

Remedial: improve someone's health when they are ill.

Therapeutic: having a healing effect; tending to make a person healthier. This is a **synonym** of **remedial** and has been aptly used in sentence 1.

Palliative: a drug or medical treatment that reduces pain. This is a **synonym** of **remedial** and has been aptly used in sentence 2.

Restorative: something that makes you feel better or more energetic if you are feeling tired or ill. This is a **synonym** of **remedial** and has been incorrectly used in sentence 3. A more appropriate word for the context of the sentence will be **restive**, meaning unwilling to be controlled or be patient.

Thus, option B is the correct answer.

37. Ans. C.

Note that the word ludicrous means very silly and aristocrat means a member of the highest social class, often with a special title. The sentence aims to make a sarcasm here so the correct pair would be ludicrous, aristocrats.

38. Ans. C.

Note that Intrepid means - without any fear of danger. As we need a positive adjective to describe the voice, Intrepid and Plucky qualify, but looking at the second blank, needs some word to describe great and complete. As the digital architecture cannot be lament, it can be radical though. So, the correct option is C.

39. Ans. A.

Determine:

a. (v.) to discover the facts or truth about something. (The past form of the verb 'determine' is 'determined') This meaning fits into the first blank, indicating that the scholars discovered the rationale behind the country's propagandising in the course of their research.

b. (adj.) wanting to do something very much and not allowing anyone or any difficulties to stop you. This fits in the second blank to qualify the noun 'elite' and provide a reason for the successful propagandising.

Lettered: A learned person has studied for a long time and has a lot of knowledge. While this fits into the second blank, it does not fit in the first.

Grave: A serious situation or person. While the meaning fits into the second blank, this word cannot be used as a filler for the first blank.

Read: to look at words or symbols and understand what they mean. While this meaning fits in the first blank, it cannot be used as a filler for the second blank, unless preceded with the adverb 'well'.

Thus, option A is the correct answer.

40. Ans. C.

Wound: to hurt the feelings of someone; upset. In this sense, 'wound' fits in the first blank to denote the damages caused by the white people.

Wound up: very worried, nervous, or angry.

In this sense, the word 'wound' fits perfectly in the second blank, which is followed by the preposition 'up', to complete the phrase 'wound up', expressing the anxiety of the white people at being slowly replaced.

Damage: cause harm. This makes it an appropriate filler for the first blank only.

Bruises: Injuries. In this sense, it fits in the first blank, but not in the second.

Triggered: Agitated. While it may seem appropriate for the second blank, the preposition 'up' following the blank will make it contextually incorrect.

Thus, option C is the correct answer.

41. Ans. A.

Given that the difference of the total number of employees (male and female) working in companies A and B = 21

So, total number of employees (male and female) working in all the given 5

companies = $\frac{21}{18-15} \times 100 = 700$
 Number of employees (male and female) working in the company A

= $\frac{15}{100} \times 700 = 105$

So, number of male employees working in the company A = $38\frac{21}{800}\%$ of

$105 = \frac{21}{100} \times 105 = 40$

Total number of male employees working in all the given 5 companies

= $\frac{40}{10} \times 100 = 400$

The central angle of total number of male employees working in company

A = $\frac{10}{100} \times 360^\circ = 36^\circ$

42. Ans. E.

Given that the difference of the total number of employees (male and female) working in companies A and B = 21

So, total number of employees (male and female) working in all the given 5

companies = $\frac{21}{18-15} \times 100 = 700$
 Number of employees (male and female) working in the company A

= $\frac{15}{100} \times 700 = 105$

So, number of male employees working in the company A = $38\frac{21}{800}\%$ of

$105 = \frac{21}{100} \times 105 = 40$

Total number of male employees working in all the given 5 companies

= $\frac{40}{10} \times 100 = 400$

Required average = $\frac{700-400}{5} = 60$

43. Ans. A.

Given that the difference of the total number of employees (male and

female) working in companies A and B = 21

So, total number of employees (male and female) working in all the given 5

companies = $\frac{21}{18-15} \times 100 = 700$
 Number of employees (male and female) working in the company A

= $\frac{15}{100} \times 700 = 105$

So, number of male employees working in the company A = $38\frac{21}{800}\%$ of

$105 = \frac{21}{100} \times 105 = 40$

Total number of male employees working in all the given 5 companies

= $\frac{40}{10} \times 100 = 400$

The ratio of number of female employees working in companies C and E

= $\frac{24}{15} \times \frac{24}{100} \times 700 - \frac{10}{100} \times 400$

= $(168 - 96) : (70 - 60) = 72 : 10 = 36 : 5$

44. Ans. D.

Given that the difference of the total number of employees (male and female) working in companies A and B = 21

So, total number of employees (male and female) working in all the given 5

companies = $\frac{21}{18-15} \times 100 = 700$
 Number of employees (male and female) working in the company A

= $\frac{15}{100} \times 700 = 105$

So, number of male employees working in the company A = $38\frac{21}{800}\%$ of

$105 = \frac{21}{100} \times 105 = 40$

Total number of male employees working in all the given 5 companies

$$\frac{40}{100} \times 100 = 400$$

The number of female employees

$$\text{working in company B} = \frac{18}{100} \times 700 - \frac{26}{100} \times 400$$

$$= 126 - 104 = 22$$

The number of male employees

$$\text{working in company D} = \frac{25}{100} \times 400 = 100$$

$$\text{Hence, the required percentage} = \frac{100 - 22}{100} = 78\%$$

45. Ans. D.

Given that the difference of the total number of employees (male and female) working in companies A and B = 21

So, total number of employees (male and female) working in all the given 5 companies = $\frac{21}{18 - 15} \times 100 = 700$

Number of employees (male and female) working in the company A

$$= \frac{15}{100} \times 700 = 105$$

So, number of male employees working in the company A = $38\frac{21}{800}\%$ of

$$105 = \frac{2100}{800} \times 105 = 40$$

Total number of male employees working in all the given 5 companies

$$= \frac{40}{100} \times 100 = 400$$

The number of female employees

$$\text{working in company A} = \frac{15}{100} \times 700 - \frac{10}{100} \times 400$$

$$= 105 - 40 = 65$$

The number of female employees

$$\text{working in company D} = \frac{33}{100} \times 700 - \frac{25}{100} \times 400$$

$$= 231 - 100 = 131$$

$$\text{Hence, the required difference} = 131 - 65 = 66$$

46. Ans. C.

Given that the difference of the total number of employees (male and female) working in companies A and B = 21

So, total number of employees (male and female) working in all the given 5 companies = $\frac{21}{18 - 15} \times 100 = 700$

Number of employees (male and female) working in the company A

$$= \frac{15}{100} \times 700 = 105$$

So, number of male employees working in the company A = $38\frac{21}{800}\%$ of

$$105 = \frac{2100}{800} \times 105 = 40$$

Total number of male employees working in all the given 5 companies

$$= \frac{40}{100} \times 100 = 400$$

The number of post graduate male employees working in company C

$$= 18.75\% \text{ of } \frac{24}{100} \times 400 = \frac{3}{16} \times 96 = 18$$

The number of post graduate female employees working in company C

$$= 12.5\% \text{ of } \left(\frac{24}{100} \times 700 - \frac{24}{100} \times 400 \right) = \frac{1}{8} \times 72 = 9$$

Hence, the total number of post graduate employees working in the company C = 18 + 9 = 27

47. Ans. C.

Let the number of girls who were not present in the class be 3x.

The number of boys who were not present in the class = 3x - 4

The number of girls who were present

$$= 3x \times \frac{5}{3} = 5x$$

The number of boys who were present
= 40

According to the data provided in the question, we get:

$$3x + 3x - 4 + 5x + 40 = 80$$

$$\Rightarrow 11x = 44$$

$$\Rightarrow x = 4$$

The total number of girls in the class
= $8 \times 4 = 32$

48. Ans. C.

Let the number of females in village X be a.

The number of females in village Y = a

The number of males in village X = b

The number of males in village Y = 0.75b

According to the data provided in the question, we get:

$$a \times 0.50 + b \times 1.50 = 0.75b + a$$

$$\Rightarrow 0.50a + 1.5b = 0.75b + a$$

$$\Rightarrow 0.50a = 0.75b$$

$$\Rightarrow 2a = 3b$$

$$\Rightarrow a = 1.5b \dots (1)$$

Total population in village X = a + b
= $1.5b + b = 2.5b$ (From equation 1)

Total population in village Y = a + 0.75b
= $1.5b + 0.75b = 2.25b$

Required ratio = $2.5b : 2.25b = 10 : 9$

49. Ans. D.

According to the data provided in the question, we get:

$$(160 - X) = 3X$$

$$\Rightarrow 160 = 4X$$

$$\Rightarrow X = 40$$

The quantity of milk in the container
= $160 - 40 = 120$ litres

The quantity of water in the container
= 40 litres

Ratio of the milk to water in the container = $120 : 40 = 3 : 1$

The quantity of milk that is taken out

$$= \frac{3}{4} \times 20 = 15 \text{ litres}$$

The quantity of water that is taken out

$$= \frac{1}{4} \times 20 = 5 \text{ litres}$$

Quantity of the water in the final mixture = $40 - 5 + 20 = 55$ litres

50. Ans. A.

Let the cost price of the article be Rs. 100y.

Marked price of the article = Rs. 100y

$$\frac{100 + X}{100 + X} \times 100$$

Selling price of the article = Rs. 100y

$$\frac{100 + X}{100 + X} \times 100 \times \frac{100 - 0.5X}{100 - 0.5X}$$

Because the profit percentage is 8%, so the selling price of the article = Rs. 100y $\times 1.08 = 108y$

According to the data provided in the question, we get:

$$100Y \times \frac{100 + X}{100 + X} \times \frac{100 - 0.5X}{100 - 0.5X} = 108Y$$

$$\Rightarrow (100 + X) \times (100 - 0.5X) = 10800$$

$$\Rightarrow 10000 - 50X + 100X - 0.5X^2 = 10800$$

$$\Rightarrow 0.5X^2 - 50X + 800 = 0$$

$$\Rightarrow X^2 - 100X + 1600 = 0$$

$$\Rightarrow X^2 - 20X - 80X + 1600 = 0$$

$$\Rightarrow X(X - 20) - 80(X - 20) = 0$$

$$\Rightarrow (X - 20)(X - 80) = 0$$

$$\Rightarrow X = 20, 80$$

Hence, the value of X = 80

51. Ans. C.

Let the sum that he invest on compound interest be Rs. x.

$$6337.44 = x \left(1 + \frac{20}{100}\right)^2$$

$$\Rightarrow 6337.44 = x \times \left(\frac{6}{5}\right)^2$$

$$\Rightarrow x = 4401$$

Interest received on Rs. 9780 after 3 years is Rs. 4401.

According to the data provided in the question, we get:

$$4401 = 9780 \times \frac{R}{100} \times 3$$

$$\Rightarrow R = 15$$

52. Ans. B.

Let 60 men can complete the work be x days.

According to the data provided in the question, we get:

$$60 \times x = 40 \times (x + 12)$$

$$\Rightarrow 60x = 40x + 480$$

$$\Rightarrow 20x = 480$$

$$\Rightarrow x = 24$$

Let 18 men can complete the work in y days.

According to the data provided in the question, we get:

$$\frac{60 \times 24}{1} = \frac{18 \times y}{\frac{3}{5}}$$

$$\Rightarrow 60 \times 24 = 30y$$

$$\Rightarrow y = 48$$

53. Ans. A.

Let the odd numbers = a, a + 2, a + 4

Sum of odd numbers = a + a + 2 + a + 4 = 3a + 6

The even numbers = b, b + 2, b + 4

Sum of even numbers = b + b + 2 + b + 4 = 3b + 6

Statement I:

$$a + 2 - (b + 2) = 7$$

$$\Rightarrow a - b = 7$$

Required difference = 3a + 6 - (3b + 6) = 3a - 3b

$$= 3(a - b) = 3 \times 7 = 21$$

Statement I alone is sufficient to answer the question.

Statement II:

$$a + b + 4 = 57$$

$$\Rightarrow a + b = 53$$

Statement II alone is not sufficient to answer the question.

54. Ans. B.

Students passed in English = 100 - 52 = 48%

Students passed in Mathematics = 100 - 42 = 58%

Statement I:

Students passed in English = 100 - 52 = 48%

Statement I alone is not sufficient to answer the question.

Statement II:

Students passed in both English and Mathematics = 58 - 25 = 33%

Statement II alone is sufficient to answer the question.

55. Ans. E.

Let the side of the square be a m.

Statement I:

Width of path around the square field = 2 m

Statement I alone is not sufficient to answer the question.

Statement II:

Total area of the path = 136 m²

Statement I alone is not sufficient to answer the question.

Both statement I and statement II:

$$(a + 4)^2 - a^2 = 136$$

$$\Rightarrow a^2 + 16 + 2a - a^2 = 136$$

$$\Rightarrow 2a = 120$$

$$\Rightarrow a = 60 \text{ m}$$

Area of the square field = 60² = 3600 m²

Both statement I and statement II together are necessary to answer the question.

56. Ans. D.

Let the monthly income of Ananya be Rs. 5x.

Monthly income of Shaila = Rs. 6x

Monthly saving of Ananya = Rs. 2y

Monthly saving of Shaila = Rs. 3y

Statement I:

$$\frac{5x}{2y} = \frac{5}{2}$$

$$\Rightarrow x = y$$

Statement I alone is not sufficient to answer the question.

Statement II:

$$5x - 2y = 6x - 3y$$

$$\Rightarrow x = y$$

Statement I alone is not sufficient to answer the question.

Both statement I and II:

In both the statements, same equation came.

Both Statements I and II together are not sufficient to answer the question.



IBPS Clerk 2021 Course
(Batch 4)

START FREE TRIAL

57. Ans. B.

$$x^2 - \frac{23x^2}{\sqrt{46x^2 + 54x^2}} + k = 0$$

$$\Rightarrow x^2 - \frac{23x^2}{\sqrt{100x^2}} + k = 0$$

$$\Rightarrow x^2 - \frac{23x^2}{10x} + k = 0$$

$$\Rightarrow x^2 - \frac{23x}{10} + k = 0$$

Let the roots of the equations be a and b.

$$\text{And } a = \frac{3}{2}$$

$$a + b = \frac{23}{10}$$

$$\Rightarrow \frac{3}{2} + b = \frac{23}{10}$$

$$\Rightarrow b = \frac{8}{10} \text{ or } \frac{4}{5}$$

$$\text{Other root} = \frac{4}{5}$$

58. Ans. C.

a. $10x^2 - x - 3 = 0$

$$\Rightarrow 10x^2 - 6x + 5x - 3 = 0$$

$$\Rightarrow 2x(5x - 3) + 1(5x - 3) = 0$$

$$\Rightarrow (5x - 3)(2x + 1) = 0$$

$$\Rightarrow x = \frac{3}{5}, \frac{1}{2} \text{ or } 0.6, -0.5$$

b. $4y^2 + 8y - 5 = 0$

$$\Rightarrow 4y^2 + 10y - 2y - 5 = 0$$

$$\Rightarrow 2y(2y + 5) - 1(2y + 5) = 0$$

$$\Rightarrow (2y + 5)(2y - 1) = 0$$

$$\Rightarrow y = -\frac{5}{2}, \frac{1}{2} \text{ or } -2.5, 0.5$$

c. $2z^2 + 9z - 35 = 0$

$$\Rightarrow 2z^2 + 14z - 5z - 35 = 0$$

$$\Rightarrow 2z(z + 7) - 5(z + 7) = 0$$

$$\Rightarrow (z + 7)(2z - 5) = 0$$

$$\Rightarrow z = -7, \frac{5}{2} \text{ or } -7, 2.5$$

Option A. b-d

$$y = -\frac{5}{2}, \frac{1}{2} \text{ or } -2.5, 0.5$$

50 times of largest root value is divisible by 6.

$0.5 \times 50 = 25$ (This is not divisible by 6).

Option B. c-e

$$z = -7, \frac{5}{2} \text{ or } -7, 2.5$$

Condition (e): Product of both root value is between -1 and -2

$-7 \times 2.5 = -17.5$ (This is not satisfying the condition).

Option C. a-d

$$x = \frac{3}{5}, \frac{1}{2} \text{ or } 0.6, -0.5$$

Condition (d): 50 times of largest root value is divisible by 6.

$0.6 \times 50 = 30$ (This is divisible by 6).

59. Ans. B.

a. $10x^2 - x - 3 = 0$

$$\Rightarrow 10x^2 - 6x + 5x - 3 = 0$$

$$\Rightarrow 2x(5x - 3) + 1(5x - 3) = 0$$

$$\Rightarrow (5x - 3)(2x + 1) = 0$$

$$\Rightarrow x = \frac{3}{5}, \frac{1}{2} \text{ or } 0.6, -0.5$$

b. $4y^2 + 8y - 5 = 0$

$$\Rightarrow 4y^2 + 10y - 2y - 5 = 0$$

$$\Rightarrow 2y(2y + 5) - 1(2y + 5) = 0$$

$$\Rightarrow (2y + 5)(2y - 1) = 0$$

$$\Rightarrow y = -\frac{5}{2}, \frac{1}{2} \text{ or } -2.5, 0.5$$

c. $2z^2 + 9z - 35 = 0$

$$\Rightarrow 2z^2 + 14z - 5z - 35 = 0$$

$$\Rightarrow 2z(z + 7) - 5(z + 7) = 0$$

$$\Rightarrow (z + 7)(2z - 5) = 0$$

$$\Rightarrow z = -7, \frac{5}{2} \text{ or } -7, 2.5$$

Option A. b-f

$$y = -\frac{5}{2}, \frac{1}{2} \text{ or } -2.5, 0.5$$

Condition (f): Sum of both root value will be positive value.

$-2.5 + 0.5 = -2$ (This is not satisfying the condition).

Option B. b-e

$$y = -\frac{5}{2}, \frac{1}{2} \text{ or } -2.5, 0.5$$

Condition (e): Product of both root value is between -1 and -2.

$-2.5 \times 0.5 = -1.25$ (-1.25 is lies between -1 and -2)

60. Ans. C.

By approximation, we get:

$$\frac{(1214 + 2312 - 826)}{6} \times 2 = ? + 100$$

$$\Rightarrow \frac{2700}{6} \times 2 = ? + 100$$

$$\Rightarrow 900 - 100 = ?$$

$$\Rightarrow ? = 800$$

61. Ans. D.

By approximation, we get:

$$(16)^2 + (11)^2 - (10)^2 = ? + 124$$

$$\Rightarrow 256 + 121 - 100 - 124 = ?$$

$$\Rightarrow ? = 153$$

62. Ans. B.

By approximation, we get:

$$75\% \text{ of } 720 - ?^2 - 40\% \text{ of } 250 =$$

$$\sqrt{1369}$$

$$\Rightarrow 540 - 100 - 37 = ?^2$$

$$\Rightarrow ?^2 = 403$$

$$\Rightarrow ? = 20$$

Hence, option B is correct.

63. Ans. A.

By approximation, we get:

$$? = \frac{40 \times 15}{40 \times 15} + 24 - 5 \times 32$$

$$= \frac{12}{40 \times 15} + 24 - 5 \times 32$$

$$= 50 + 24 - 160$$

$$= -86$$

64. Ans. C.

By approximation, we get:

$$60\% \text{ of } 640 - ?^3 = 84\% \text{ of } 250 - 169$$

$$\Rightarrow 384 - ?^3 = 210 - 169$$

$$\Rightarrow ?^3 = 343$$

$$\Rightarrow ? = 7$$

65. Ans. C.

Let the present age of Prashant be x years.

Then, the present age of Anmol = (x + 5) years

According to the data provided in the question, we get:

$$\frac{x + 5 - 5}{x + 4} = \frac{4}{5}$$

$$\Rightarrow 5x = 4x + 16$$

$$\Rightarrow x = 16$$

Present age of Prashant = 16 years

Present age of Anmol = 16 + 5 = 21 years

Present age of Keshav = 21 + 4 = 25 years

$$\frac{\text{Required percentage}}{25 - 16} \times 100 = 56.25\%$$

66. Ans. C.

Cost price of the mixture =

$$\frac{309}{120} \times 100 = \text{Rs. } 257.5$$



$$(280 - 257.5) : (257.5 - 240)$$

$$22.5 : 17.5$$

According to the data provided in the question, we get:

$$\frac{22.5}{17.5} = \frac{X}{X - 12}$$

$$\Rightarrow 9(X - 12) = 7X$$

$$\Rightarrow 9X - 7X = 108$$

$$\Rightarrow X = 54$$

67. Ans. D.

According to the data provided in the question, we get:

$$\frac{24000 \times 12}{40000 \times (12 - x)} = \frac{4}{5}$$

$$\Rightarrow 9 = 12 - x$$

$$\Rightarrow x = 3$$

Hence, time after which Q withdraw the amount = 3 + 4 = 7 months

68. Ans. B.

Let the cost price of each bottle be Rs. x.

Cost price of both the bottles = Rs. 2x

Selling price of both the bottles = 2x × 110% = Rs. 2.2x

Selling price of the first bottle = 125% of x = Rs. 1.25x

Selling price of the second bottle = Rs. (1.25x - 2160)

According to the data provided in the question, we get:

$$1.25x + 1.25x - 2160 = 2.2x$$

$$\Rightarrow 2.5x - 2.2x = 2160$$

$$\Rightarrow x = 7200$$

Cost price of the each bottle = Rs. 7200

69. Ans. A.

The quantity of water in the mixture

$$= \frac{765}{17} \times 10 = 450 \text{ litres}$$

The quantity of milk in the mixture =

$$\frac{765}{17} \times 7 = 315 \text{ litres}$$

The quantity of the mixture that is taken out = $765 \times 0.20 = 153$ litres

According to the data provided in the question, we get:

$$\frac{450 - 153 \times \frac{10}{17} + 2X}{315 - 153 \times \frac{7}{17} + 3X - 32} = \frac{6}{5}$$

$$\Rightarrow \frac{450 - 90 + 2X}{315 - 63 + 3X - 32} = \frac{6}{5}$$

$$\Rightarrow 5(360 + 2X) = 6(220 + 3X)$$

$$\Rightarrow 1800 + 10X = 1320 + 18X$$

$$\Rightarrow 8X = 480$$

$$\Rightarrow X = 60$$

Quantity of milk in the final mixture = $450 - 90 + 120 = 480$ litres

Quantity of water in the final mixture = $315 - 63 + 148 = 400$ litres

Required difference = $480 - 400 = 80$ litres

70. Ans. D.

Let the number of currency notes of each denomination with P be x.

According to the data provided in the question, we get

$$50x + 20x + 10x = 1120$$

$$\Rightarrow 80x = 1120$$

$$\Rightarrow x = 14$$

The number of currency notes of each denominations that with P = 14

Let the number of currency notes of each denomination with Q be y.

According to the data provided in the question, we get

$$100y + 20y + 5y = 3250$$

$$\Rightarrow 125y = 3250$$

$$\Rightarrow y = 26$$

The number of currency notes of each denominations with Q = 26

Let the number of currency notes of each denomination with R be z.

According to the data provided in the question, we get

$$200z + 50z + 20z = 5400$$

$$\Rightarrow 270z = 5400$$

$$\Rightarrow z = 20$$

The number of currency notes of each denominations with R = 20

Let the number of currency notes of each denomination with S be s.

Total amount that S has = $20s + 10s + 5s = \text{Rs. } 35s$

Let the number of currency notes of each denomination with T be a.

According to the data provided in the question, we get

$$500a + 20a + 10a = 3710$$

$$\Rightarrow 530a = 3710$$

$$\Rightarrow a = 7$$

The number notes of each denomination with T = 7

Required answer = $14 - 7 = 7$

Hence, option D is correct.

71. Ans. C.

Let the number of currency notes of each denomination with P be x.

According to the data provided in the question, we get

$$50x + 20x + 10x = 1120$$

$$\Rightarrow 80x = 1120$$

$$\Rightarrow x = 14$$

The number of currency notes of each denominations that with P = 14

Let the number of currency notes of each denomination with Q be y.

According to the data provided in the question, we get

$$100y + 20y + 5y = 3250$$

$$\Rightarrow 125y = 3250$$

$$\Rightarrow y = 26$$

The number of currency notes of each denominations with Q = 26

Let the number of currency notes of each denomination with R be z.

According to the data provided in the question, we get

$$200z + 50z + 20z = 5400$$

$$\Rightarrow 270z = 5400$$

$$\Rightarrow z = 20$$

The number of currency notes of each denominations with R = 20

Let the number of currency notes of each denomination with S be s.

Total amount that S has = $20s + 10s + 5s = \text{Rs. } 35s$

The prime numbers that lies between 20 to 30 are 23 and 29.

Case I: Number of currency notes of each denomination with T = 29

According to the data provided in the question, we get

$$\text{Total amount with S} = 35 \times 29 = \text{Rs. } 1015$$

This is not possible because the amount should be less than Rs. 1000.

Case II: Number of currency notes of each denomination with T = 23

According to the data provided in the question, we get

$$\text{Total amount that S has} = 35 \times 23 = \text{Rs. } 805$$

So, the total number notes of all denominations with S = $23 \times 3 = 69$

Hence, option C is correct.

72. Ans. A.

Let the number of currency notes of each denomination with P be x.

According to the data provided in the question, we get

$$50x + 20x + 10x = 1120$$

$$\Rightarrow 80x = 1120$$

$$\Rightarrow x = 14$$

The number of currency notes of each denominations that with P = 14

Let the number of currency notes of each denomination with Q be y.

According to the data provided in the question, we get

$$100y + 20y + 5y = 3250$$

$$\Rightarrow 125y = 3250$$

$$\Rightarrow y = 26$$

The number of currency notes of each denominations with Q = 26

Let the number of currency notes of each denomination with R be z.

According to the data provided in the question, we get

$$200z + 50z + 20z = 5400$$

$$\Rightarrow 270z = 5400$$

$$\Rightarrow z = 20$$

The number of currency notes of each denominations with R = 20

Let the number of currency notes of each denomination with S be s.

Total amount that S has = $20s + 10s + 5s = \text{Rs. } 35s$

Required difference = $26 - 14 = 12$

Hence, option A is correct.

73. Ans. B.

Let the number of currency notes of each denomination with P be x.

According to the data provided in the question, we get

$$50x + 20x + 10x = 1120$$

$$\Rightarrow 80x = 1120$$

$$\Rightarrow x = 14$$

The number of currency notes of each denominations that with P = 14

Let the number of currency notes of each denomination with Q be y.

According to the data provided in the question, we get

$$100y + 20y + 5y = 3250$$

$$\Rightarrow 125y = 3250$$

$$\Rightarrow y = 26$$

The number of currency notes of each denominations with Q = 26

Let the number of currency notes of each denomination with R be z.

According to the data provided in the question, we get

$$200z + 50z + 20z = 5400$$

$$\Rightarrow 270z = 5400$$

$$\Rightarrow z = 20$$

The number of currency notes of each denominations with R = 20

Let the number of currency notes of each denomination with S be s.

Total amount that S has = $20s + 10s + 5s = \text{Rs. } 35s$

Total amount that A has = $\frac{3250 + 5400}{2} + 25 = \text{Rs. } 4350$

Number of possible notes of Rs. 2000 = 2

Number of possible notes of Rs. 200 = 1

Remaining amount = $4350 - (2 \times 2000 + 1 \times 200) = \text{Rs. } 150$

Number of possible notes of Rs. 50 = $\frac{150}{50} = 3$

Hence, option B is correct.

74. Ans. C.

Total distance travelled by car B = $50 \times 7\frac{12}{60} = 360 \text{ km}$

Total distance travelled by car A = $360 \times (100 - 16.66)\% = 300 \text{ km}$

Speed of car A = $\frac{300}{6} = 50 \text{ km/h}$

Speed of car C = $50 \times 2 = 100 \text{ km/h}$

Time taken by car C to travel 400 km = $\frac{400}{100} = 4 \text{ hours}$

Car	Speed	Distance	Time
A	50 km/h	300 km	6 hours
B	50 km/h	360 km	7 hours 12 minutes
C	100 km/h	400 km	4 hours

New speed of car A = $(50 - 2) = 48 \text{ km/h}$

New speed of car B = $50 \times 110\% = 55 \text{ km/h}$

Required difference = $(55 - 48) \times 4 = 28 \text{ km}$

Hence, option C is correct.

75. Ans. B.

Total distance travelled by car B = $50 \times 7\frac{12}{60} = 360 \text{ km}$

Total distance travelled by car A = $360 \times (100 - 16.66)\% = 300 \text{ km}$

Speed of car A = $\frac{300}{6} = 50 \text{ km/h}$

Speed of car C = $50 \times 2 = 100 \text{ km/h}$

Time taken by car C to travel 400 km = $\frac{400}{100} = 4 \text{ hours}$

Car	Speed	Distance	Time
A	50 km/h	300 km	6 hours
B	50 km/h	360 km	7 hours 12 minutes
C	100 km/h	400 km	4 hours

Distance travelled by car D = $300 \times 140\% = 420 \text{ km}$

Speed of car D = $\frac{420}{10} = 42 \text{ km/h}$
Hence, option B is correct.

76. Ans. B.

Speed of the train A = $\frac{345}{23} = 15 \text{ m/s}$
New speed of train A = $15 \times 1.50 = 22.5 \text{ m/s}$

Let the length of the platform be $x \text{ m}$.
According to the data provided in the question, we get:

$$22.5 = \frac{345 + x}{24}$$

$$\Rightarrow 540 = 345 + x$$

$$\Rightarrow x = 195$$

Required ratio = $345 : 195 = 23 : 13$
77. Ans. D.

Let the speed of the boat be $7x \text{ km/h}$.
Then, the speed of the stream = $2x \text{ km/h}$

According to the data provided in the question, we get:

$$\frac{450}{7x - 2x} - \frac{450}{7x + 2x} = 20$$

$$\frac{90}{x} - \frac{50}{x} = 20$$

$$\Rightarrow 40 = 20x$$

$$\Rightarrow x = 2$$

Speed of the boat in still water = $7 \times 2 = 14 \text{ km/h}$

Speed of the stream = $2 \times 2 = 4 \text{ km/h}$

Speed of the boat in upstream = $14 - 4 = 10 \text{ km/h}$

Speed of the boat in downstream = $14 + 4 = 18 \text{ km/h}$

Required difference = $18 - 10 = 8 \text{ km/h}$

78. Ans. C.

Let the sum be Rs. x .

According to the data provided in the question, we get:

$$x \left(1 + \frac{10}{100}\right)^2 - x = \frac{x \times 1 \times 12 \times 2}{3 \times 100} + \frac{x \times 2 \times R \times 2}{3 \times 100}$$

$$\Rightarrow \frac{21x}{100} = \frac{2x}{25} + \frac{Rx}{75}$$

$$\Rightarrow \frac{21}{100} = \frac{6}{75} + \frac{R}{75}$$

$$\Rightarrow 75 \times 21 = 600 + 100R$$

$$\Rightarrow 1575 - 600 = 100R$$

$$\Rightarrow 100R = 975$$

$$\Rightarrow R = 9.75$$

79. Ans. D.

Let the total work be 120 units. (LCM of 24 and 40)

Amount of the work done by Manan in $\frac{120}{24}$

one day = $\frac{120}{24} = 5$ units

Amount of the work done by Komal in $\frac{120}{40}$

one day = $\frac{120}{40} = 3$ units

Amount of the work done by Manan and Komal together in 8 days = $8 \times 8 = 64$ units

Remaining amount of the work = $120 - 64 = 56$ units

Time taken by Akshay to done 56 units of work = 7 days

Amount of the work done by Komal in $\frac{56}{8}$

one day = $\frac{56}{7} = 8$ units

Ratio of the efficiencies of Manan, Komal and Akshay = 5 : 3 : 8

Share of Manan = $\frac{5}{16} \times 2400 = \text{Rs. } 750$

Share of Komal = $\frac{3}{16} \times 2400 = \text{Rs. } 450$

Share of Akshay = $\frac{8}{16} \times 2400 = \text{Rs. } 1200$

80. Ans. A.

Gun B:

Total number of bullets fired = 900

Number of bullets that hit the target = $900 \times 33.33\% = 300$

Number of bullets that missed the target = $900 - 300 = 600$

Gun A:

Number of bullets that hit the target = $300 \times 80\% = 240$

Total number of bullets fired = $\frac{240}{30} \times 100 = 800$

Number of bullets missed the target = $800 - 240 = 560$

Gun C:

Number of bullets missed the target = $800 \times (100 - 6.25)\% = 750$

Number of bullets hit the target = 450

Total number of bullets fired = $750 + 450 = 1200$

Guns	Total number of bullets fired	Number of bullets that hit the target	Number of bullets that missed the target
A	800	240	560
B	900	300	600
C	1200	450	750

The bullets fired by Gun C would make an Arithmetic progression with first term 0 (for bullet fired at 12:30 pm) and the common difference would be 7 for rest of the terms.

As, the number of seconds from 12:30 pm to 12:34 pm is 240, the last term of the AP would be 238. (largest multiple of 7 less than 240)

AP : 0, 7, 14, 238

Last term of AP - First term of AP

$$\frac{\text{Common difference}}{7} + 1 =$$

Number of terms of AP

$$\Rightarrow \frac{238 - 0}{7} + 1 = 35 = \text{Number of terms of AP}$$

Number of bullets fired by Gun C from 12.30 pm to 12.34 pm

Remaining number of bullets in Gun C = $1200 - 35 = 1165$

Hence, option A is correct.

81. Ans. D.

Gun B:

Total number of bullets fired = 900

Number of bullets that hit the target = $900 \times 33.33\% = 300$

Number of bullets that missed the target = $900 - 300 = 600$

Gun A:

Number of bullets that hit the target
 $= 300 \times 80\% = 240$

Total number of bullets fired =
 $\frac{240}{30} \times 100 = 800$

Number of bullets missed the target
 $= 800 - 240 = 560$

Gun C:

Number of bullets missed the target
 $= 800 \times (100 - 6.25)\% = 750$

Number of bullets hit the target = 450

Total number of bullets fired = 750 + 450 = 1200

Guns	Total number of bullets fired	Number of bullets that hit the target	Number of bullets that missed the target
A	800	240	560
B	900	300	600
C	1200	450	750

Required average = $\frac{240 + 300 + 450}{3} = 330$

Hence, option D is correct.

82. Ans. E.

Gun B:

Total number of bullets fired = 900

Number of bullets that hit the target
 $= 900 \times 33.33\% = 300$

Number of bullets that missed the target
 $= 900 - 300 = 600$

Gun A:

Number of bullets that hit the target
 $= 300 \times 80\% = 240$

Total number of bullets fired =
 $\frac{240}{30} \times 100 = 800$

Number of bullets missed the target
 $= 800 - 240 = 560$

Gun C:

Number of bullets missed the target
 $= 800 \times (100 - 6.25)\% = 750$

Number of bullets hit the target = 450

Total number of bullets fired = 750 + 450 = 1200

Guns	Total number of bullets fired	Number of bullets that hit the target	Number of bullets that missed the target
A	800	240	560
B	900	300	600
C	1200	450	750

Using the previous concept of number of terms in Arithmetic progression.

Number of bullets fired by Gun A in 30

minutes = $\left\lfloor \sqrt{\frac{30 \times 60}{5}} \right\rfloor + 1 = 361$ (here $\lfloor x \rfloor$ is the greatest integer function)

Number of bullets fired by Gun B in 30

minutes = $\left\lfloor \sqrt{\frac{30 \times 60}{3}} \right\rfloor + 1 = 601$

Number of bullets fired by Gun C in 30

minutes = $\left\lfloor \sqrt{\frac{30 \times 60}{7}} \right\rfloor + 1 = 258$

Remaining number of bullets in all Guns = $(800 + 900 + 1200) - (361 + 601 + 258) = 1680$

Hence, option E is correct.

83. Ans. C.

Gun B:

Total number of bullets fired = 900

Number of bullets that hit the target
 $= 900 \times 33.33\% = 300$

Number of bullets that missed the target
 $= 900 - 300 = 600$

Gun A:

Number of bullets that hit the target
 $= 300 \times 80\% = 240$

Total number of bullets fired =
 $\frac{240}{30} \times 100 = 800$

Number of bullets missed the target
 $= 800 - 240 = 560$

Gun C:

Number of bullets missed the target
 $= 800 \times (100 - 6.25)\% = 750$

Number of bullets hit the target = 450

Total number of bullets fired = 750 + 450 = 1200

Guns	Total number of bullets fired	Number of bullets that hit the target	Number of bullets that missed the target
A	800	240	560
B	900	300	600
C	1200	450	750

Using the previous concept of number of terms in Arithmetic progression.

Number of bullets fired by Gun A in 10

minutes = $\left\lfloor \sqrt{\frac{10 \times 60}{5}} \right\rfloor + 1 = 121$

Number of bullets fired by Gun A in 10

minutes = $\left\lfloor \sqrt{\frac{4 \times 60}{3}} \right\rfloor + 1 = 81$

Difference = 121 - 81 = 40

$$\text{Required percentage} = \frac{40}{81} \times 100 \approx 49\%$$

Hence, option C is correct.

84. Ans. D.

Gun B:

Total number of bullets fired = 900
 Number of bullets that hit the target = $900 \times 33.33\% = 300$
 Number of bullets that missed the target = $900 - 300 = 600$

Gun A:

Number of bullets that hit the target = $300 \times 80\% = 240$
 Total number of bullets fired = $\frac{240}{30} \times 100 = 800$

Number of bullets missed the target = $800 - 240 = 560$

Gun C:

Number of bullets missed the target = $800 \times (100 - 6.25)\% = 750$
 Number of bullets hit the target = 450
 Total number of bullets fired = $750 + 450 = 1200$

Guns	Total number of bullets fired	Number of bullets that hit the target	Number of bullets that missed the target
A	800	240	560
B	900	300	600
C	1200	450	750

The number of bullets that hit the target by Gun D = 300

Total number of bullets fired by Gun D = $\frac{800 + 1200}{2}$

$$D = \frac{800 + 1200}{2} = 1000$$

The number of bullets hit the target by Gun D = $1000 - 300 = 700$

Hence, option D is correct.

85. Ans. E.

Gun B:

Total number of bullets fired = 900
 Number of bullets that hit the target = $900 \times 33.33\% = 300$
 Number of bullets that missed the target = $900 - 300 = 600$

Gun A:

Number of bullets that hit the target = $300 \times 80\% = 240$

$$\text{Total number of bullets fired} = \frac{240}{30} \times 100 = 800$$

Number of bullets missed the target = $800 - 240 = 560$

Gun C:

Number of bullets missed the target = $800 \times (100 - 6.25)\% = 750$
 Number of bullets hit the target = 450
 Total number of bullets fired = $750 + 450 = 1200$

Guns	Total number of bullets fired	Number of bullets that hit the target	Number of bullets that missed the target
A	800	240	560
B	900	300	600
C	1200	450	750

Required ratio = $750 : 800 = 15 : 16$
 Hence, option E is correct.

86. Ans. D.

Simple interest earned in 2 years = $9800 - 8120 = \text{Rs. } 1680$

Simple interest earned in 3 years = $\frac{1680}{2} \times 3 = \text{Rs. } 2520$

Sum = $8120 - 2520 = \text{Rs. } 5600$

According to the data provided in the question, we get:

$$2520 = 5600 \times R\% \times 3$$

$$\Rightarrow R = 15$$

Rate of interest for compound interest = $15 + 5 = 20\%$

Compound interest = 5600

$$\left(1 + \frac{20}{100}\right)^2 - 5600$$

$$= 8064 - 5600 = \text{Rs. } 2464$$

87. Ans. B.

Profit share of Dharma = $10480 - 5280 = \text{Rs. } 5200$

Ratio of profit share of Ashok to Dharma = $5280 : 5200 = 66 : 65$

According to the data provided in the question, we get:

$$\frac{(X + 600) \times 6 + (X + 1800) \times 6}{(X - 400) \times 6 + (X + 2600) \times 6} = \frac{66}{65}$$

$$\Rightarrow \frac{X + 1200}{X + 1100} = \frac{66}{65}$$

$$\Rightarrow 65X + 78000 = 66X + 72600$$

$$\Rightarrow X = 5400$$

88. Ans. C.

The probability of picking 1 Red ball = $\frac{1}{5}$

$$\text{So, } \frac{y}{20} = \frac{1}{5}$$

$$\Rightarrow y = 4$$

Total number of Yellow and Green balls = $20 - 4 = 16$

$$x + x + 4 = 16$$

$$\Rightarrow 2x = 12$$

$$\Rightarrow x = 6$$

Number of Red balls in the bag = $6 + 4 = 10$

89. Ans. A.

Let the radii of cylinder 1 and cylinder 2 be r and R respectively.

Also, let the heights of cylinder 1 and cylinder 2 be h and H respectively.

$$\frac{\text{Volume of cylinder C1}}{\text{Volume of cylinder C2}} = \frac{5}{16}$$

$$\frac{\pi \times r^2 h}{\pi \times R^2 H} = \frac{5}{16}$$

$$\Rightarrow \frac{r^2 \times 5}{R^2 \times 4} = \frac{5}{16}$$

$$\Rightarrow \frac{r^2}{R^2} = \frac{1}{4}$$

$$\Rightarrow \frac{r}{R} = \frac{1}{2}$$

$$\text{Now, } 2 \times \frac{22}{7} \times 7 (h + 7) = 748$$

$$\Rightarrow 44h + 308 = 748$$

$$\Rightarrow 44h = 440$$

$$\Rightarrow h = 10 \text{ cm}$$

$$\text{Height of the cylinder C1} = 10 \text{ cm}$$

$$\text{Height of the cylinder C2} = \frac{10}{5} \times 4 = 8 \text{ cm}$$

$$\text{Radius of cylinder of cylinder C2} = 7 \times 2 = 14 \text{ cm}$$

$$\text{Total surface area of cylinder C2} = 2 \times \frac{22}{7} \times 7 \times 14 (8 + 14) = 1936 \text{ cm}^2$$

$$\times 7 \times 14 (8 + 14) = 1936 \text{ cm}^2$$

90. Ans. C.

Let the P and Q be $5x$ and $7x$ respectively.

According to the data provided in the question, we get:

$$\frac{5x + 22}{7x + 35} = \frac{7}{10}$$

$$\Rightarrow 50x + 220 = 49x + 245$$

$$\Rightarrow x = 25$$

$$P = 25 \times 5 = 125$$

$$Q = 25 \times 7 = 175$$

$$\text{Required percentage} = \frac{175 \times 0.48}{125 \times 0.60} \times 100 = 112\%$$

91. Ans. C.

Months	Dates	Persons	Number of Shops	Number of Apartments
September (30 days)	5 th	A	1	2
	11 th	D	3	6
	14 th	F	6	12
November (30 days)	5 th	B	2	4
	11 th	I	1	2
	14 th	H	5	10
December (31 days)	5 th	C	3	6
	11 th	E	1	2
	14 th	G	4	8

92. Ans. B.

Months	Dates	Persons	Number of Shops	Number of Apartments
September (30 days)	5 th	A	1	2
	11 th	D	3	6
	14 th	F	6	12
November (30 days)	5 th	B	2	4
	11 th	I	1	2
	14 th	H	5	10
December (31 days)	5 th	C	3	6
	11 th	E	1	2
	14 th	G	4	8

93. Ans. D.

Months	Dates	Persons	Number of Shops	Number of Apartments
September (30 days)	5 th	A	1	2
	11 th	D	3	6
	14 th	F	6	12
November (30 days)	5 th	B	2	4
	11 th	I	1	2
	14 th	H	5	10
December (31 days)	5 th	C	3	6
	11 th	E	1	2
	14 th	G	4	8

94. Ans. D.

Months	Dates	Persons	Number of Shops	Num Apart
September (30 days)	5 th	A	1	
	11 th	D	3	
	14 th	F	6	
November (30 days)	5 th	B	2	
	11 th	I	1	
	14 th	H	5	
December (31 days)	5 th	C	3	
	11 th	E	1	
	14 th	G	4	

95. Ans. C.

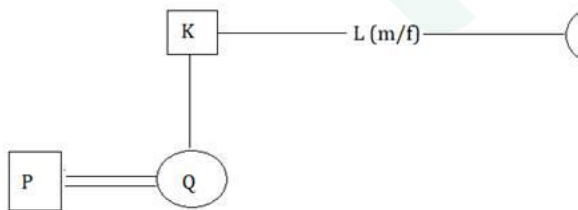
Months	Dates	Persons	Number of Shops	Num Apart
September (30 days)	5 th	A	1	2
	11 th	D	3	6
	14 th	F	6	12
November (30 days)	5 th	B	2	4
	11 th	I	1	2
	14 th	H	5	10
December (31 days)	5 th	C	3	6
	11 th	E	1	2
	14 th	G	4	8

96. Ans. A.

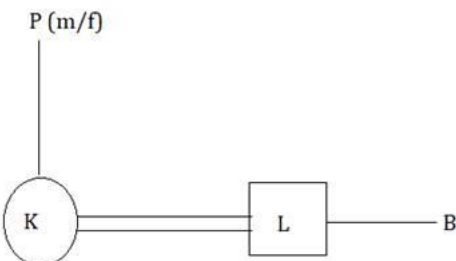
3rd letter of SECURITY, 2nd and 5th letter of PURITY, 6th letter of ENSURE and 1st letter of AMPULE are C, U, T, E, A,

The newly formed word is ACUTE.

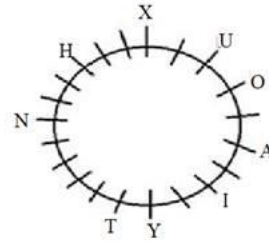
97. Ans. A.



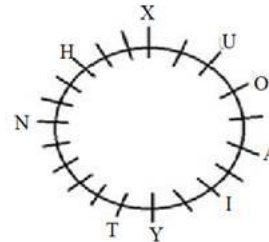
98. Ans. E.



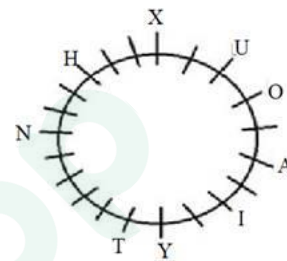
99. Ans. D.



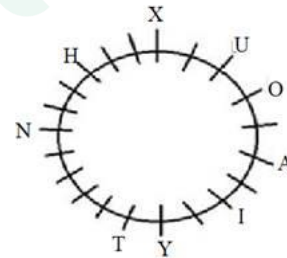
100. Ans. A.



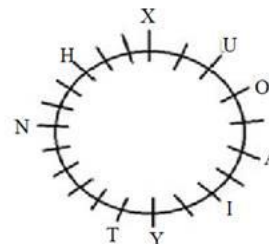
101. Ans. D.



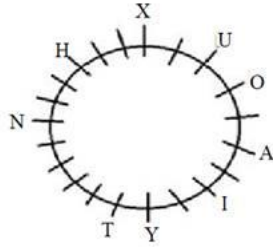
102. Ans. D.



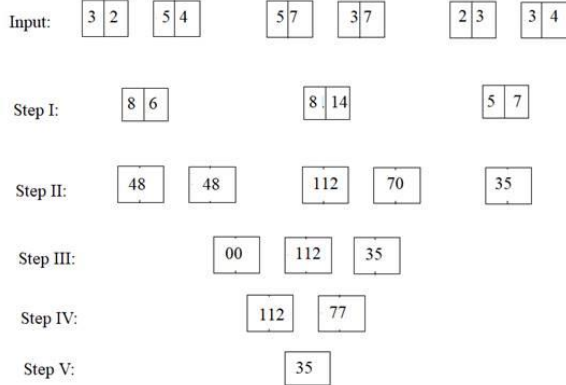
103. Ans. A.



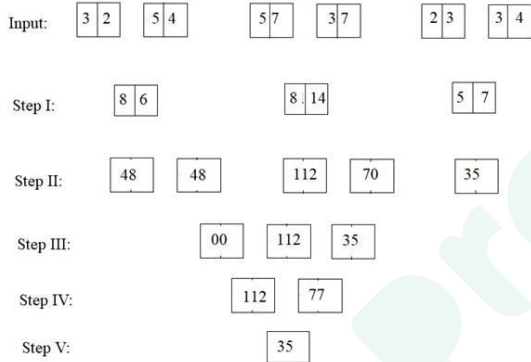
104. Ans. C.



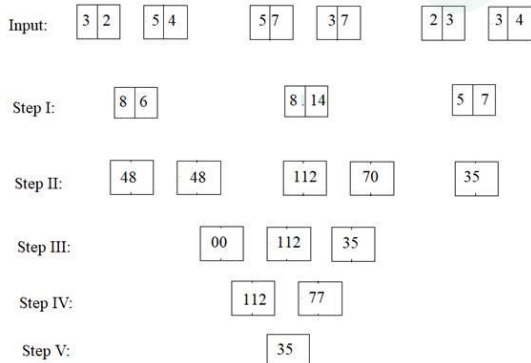
105. Ans. E.



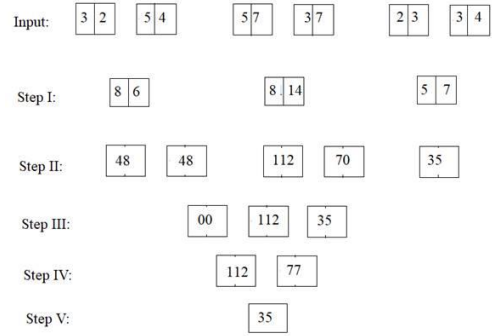
106. Ans. A.



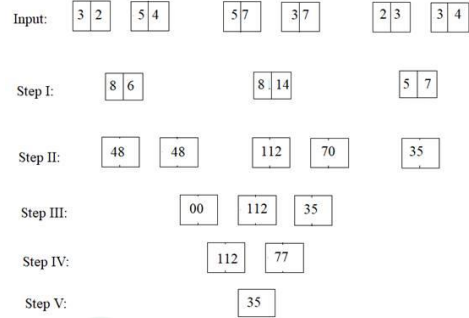
107. Ans. C.



108. Ans. B.



109. Ans. D.



110. Ans. B.

Increase in use of natural sources of water and private vehicles causes water crisis and air pollution.

111. Ans. C.

He should inform his seniors before calling the police.

112. Ans. D.

None of the given options are right to do.

113. Ans. E.

C R O C O D I L E
3 18 15 3 15 4 9 12 5

114. Ans. C.

Years	People	Laptops	Colours
2001	C	Acer	Black
2002	D	HP	Black
2003	A	Lenovo	Silver
2004	E	Lenovo	Silver
2005	B	HP	Blue
2006	F	Acer	Black

115. Ans. B.

Years	People	Laptops	Colours
2001	C	Acer	Black
2002	D	HP	Black
2003	A	Lenovo	Silver
2004	E	Lenovo	Silver
2005	B	HP	Blue
2006	F	Acer	Black

116. Ans. C.

Years	People	Laptops	Colours
2001	C	Acer	Black
2002	D	HP	Black
2003	A	Lenovo	Silver
2004	E	Lenovo	Silver
2005	B	HP	Blue
2006	F	Acer	Black

117. Ans. C.

Years	People	Laptops	Colours
2001	C	Acer	Black
2002	D	HP	Black
2003	A	Lenovo	Silver
2004	E	Lenovo	Silver
2005	B	HP	Blue
2006	F	Acer	Black

118. Ans. A.

Years	People	Laptops	Colours
2001	C	Acer	Black
2002	D	HP	Black
2003	A	Lenovo	Silver
2004	E	Lenovo	Silver
2005	B	HP	Blue
2006	F	Acer	Black

119. Ans. A.

The assumption is false because of the term "criminal offense". No information regarding this given in the statement.

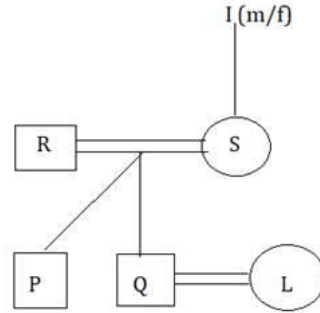
So, only I follows.

120. Ans. E.

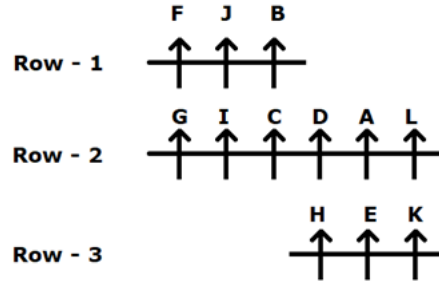
None follows.

The terms 'any' in assumption I and 'only' in assumption II make them false.

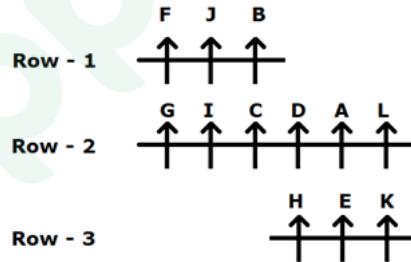
121. Ans. C.



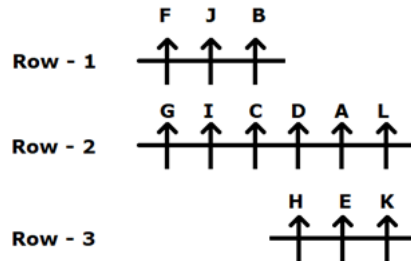
122. Ans. A.



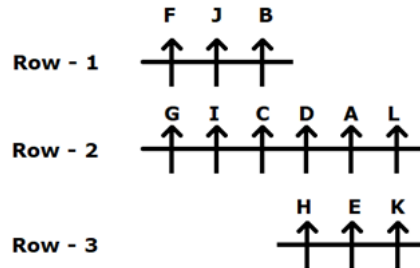
123. Ans. C.



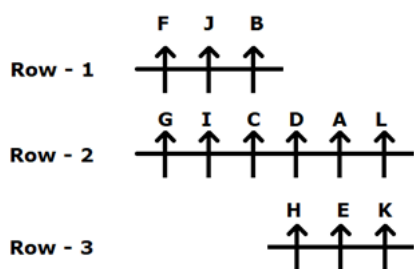
124. Ans. D.



125. Ans. D.



126. Ans. D.



127. Ans. A.

From the given information:

Statement I:

P is standing second from the left end.

R is standing third to the left of Q who is near to T.

Statement I alone isn't sufficient to answer the question.

Statement II:

Q isn't the immediate neighbor of U who doesn't sit any extreme ends of the row.

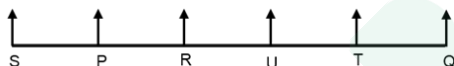
Statement II alone isn't sufficient to answer the question.

Statement III:

T isn't the immediate neighbor of P.

Statement III alone isn't sufficient to answer the question.

On combining statements I and II:



Hence, statement I and II together is sufficient to answer the question.

On combining statements II and III:

Q isn't the immediate neighbor of U who doesn't sit any extreme ends of the row.

T isn't the immediate neighbor of P.

Hence, statement II and III together isn't sufficient to answer the question.

On combining statements I and III:

P is standing second from the left end.

R is standing third to the left of Q who is near to T.

T isn't the immediate neighbor of P.

Hence, statements I and III together isn't sufficient to answer the question.

Hence, the data in statement I and statement II is sufficient to answer the question.

128. Ans. E.

From the given information:

Statement I: Dancer travelled on one of the days after Wednesday but not on Sunday. Only one person has travelled between Dancer and Doctor but Doctor doesn't travel on last day of the week. Two persons travelled between Doctor and Teacher.

Day	Person
Monday	Teacher 2
Tuesday	Doctor
Wednesday	Teacher/ Doctor 1
Thursday	Dancer/ Doctor 2
Friday	Dancer 1/ Teacher
Saturday	Dancer 2/ Doctor/ teacher 1
Sunday	Teacher 2

So, statement I alone isn't sufficient to answer the question.

Statement II: Sunday is not the day when no one is travelled and painter is not travelled on Sunday. Doctor travelled before Teacher. Two persons travelled between Painter and Holiday.

So, statement II alone isn't sufficient to answer the question.

Statement III: Artist travelled before holiday. There is three-day gap between holiday and the day on which Singer travelled.

So, statement III alone isn't sufficient to answer the question.

On combining all three statements:

Artist will travel on Monday.

Wednesday is holiday.

Dancer will travel on Thursday.

Teacher will travel on Friday.

Painter will travel on Saturday.

Singer will travel on Sunday.

The final arrangement will be as shown:

Day	Person
Monday	Artist
Tuesday	Doctor
Wednesday	Holiday
Thursday	Dancer
Friday	Teacher
Saturday	Painter
Sunday	Singer

Hence, the data in all the statements I, II and III together is sufficient to answer the question.

129. Ans. D.

From the given information:

Statement I: T is the tallest among the all. R is just placed behind Q but not on even numbered position.

$T(5) > _ > _ > _ > _$

$T(5) > _ > _ > Q(2) > R(1)$

$T(5) > Q(4) > R(3) > _ > _$

Statement II: T doesn't place at even numbered position.

$T(5) > _ > _ > _ > _$

$_ > _ > T(3) > _ > _$

$_ > _ > _ > _ > T(1)$

Statement III: U doesn't place at even numbered position and T is placed after U.

$T(5) / T(4) > U(3) > _ > _$

$T > U(1)$

On combining all the statements:

$T(5) > S(4) > U(3) > Q(2) > R(1)$

Or

$T(5) > Q(4) > R(3) > S(2) > U(1)$

Hence, the data in all the statements I, II and III together isn't sufficient to answer the question.

130. Ans. D.

From the given information:

S likes Dancing and M likes neither Fighting nor Singing.

Statement I: B likes Painting and N doesn't like Fighting.

Person	Activity
B	Painting
O	
S	Dancing
P	
N	Not fighting
M	Not fighting and Singing

So, statement I alone isn't sufficient to answer the question.

Statement II: O likes Singing and P doesn't like Painting.

Person	Activity
B	
O	Singing
S	Dancing
P	Not Painting
N	
M	Not fighting and Singing

So, statement II alone isn't sufficient to answer the question.

Statement III: N likes neither Painting nor Singing.

Person	Activity
B	
O	
S	Dancing
P	
N	Not painting and Singing
M	Not fighting and Singing

So, statement III alone isn't sufficient to answer the question.

On combining all three statements:

Person	Activity
B	Painting
O	Singing
S	Dancing
P	Fighting
N	Not painting, Fighting and Singing
M	Not fighting and Singing

Hence, the data in all the statements I, II and III together isn't sufficient to answer the question.

131. Ans. E.

From the given information:

From statement I:

Position of O = 3rd from left

Position of D = 16th from right

So, the total number of people sitting in the row cannot be determined.

Thus, statement I alone is not sufficient to answer the question.

Statement II:

Z is sitting seventh to the right of B.

So, the total number of people sitting in the row cannot be determined.

Thus, statement II alone is not sufficient to answer the question.

From statement III:

There is twenty-two people between D and O which includes B and Z.

So, the total number of people sitting in the row cannot be determined.

Thus, statement III alone is not sufficient to answer the question.

From statement I, II and III:

There are two people in to the left of O.

There are 15 people to the right of D. R is sitting seventh to the left of Z.

There are 22 people between D and O including B and Z.

Combining the above statements, we get:

Number of people in the row = (to left of O) + (to right of D) + (between D and O) + (for D and O)
 = 2 + 15 + 22 + 2 = 41

So, there are 41 people sitting in the row including D, O, B and Z.

Hence, the data in all the statements I, II and III together is sufficient to answer the question.

132. Ans. E.

All except option E follows the same rule - the letters of each word is arranged in reverse order.

133. Ans. E.

None follows.

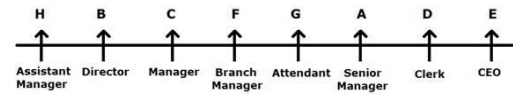
Capital punishment is not the only way to reduce crime. Robbery is not a crime for which a punishment like capital punishment should be imposed.

134. Ans. A.

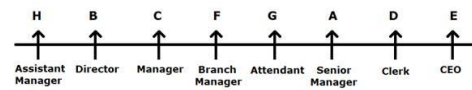
In such markets where the product of consumption is related to addiction, reducing supply will in fact increase criminal activities in the country as quitting smoking habit or any other kind of addiction habits are not easy. If people do not get tobacco easily, they can cross the limit which may increase crime rates. Hence, argument I is not strong.

Again, people who works in this industry or farm tobacco will lose their jobs and that will cause unemployment in the country. Hence, argument II is strong.

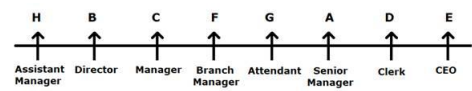
135. Ans. B.



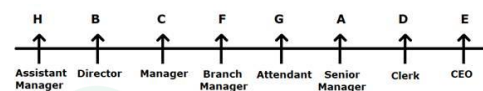
136. Ans. C.



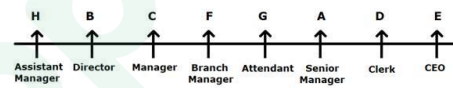
137. Ans. D.



138. Ans. B.



139. Ans. B.



140. Ans. C.

Given,

S U R R O U N D I N G S



R U S D N U O R S G N I

Again,

E N V I R O N M E N T



N E N O R I V T N E M

Therefore,

P R O T E C T I O N



141. Ans. A.

• Finance Minister Nirmala Sitharaman announced that the government will infuse ₹ 20,000 crore into public sector banks (PSBs) in 2021-22 to meet the regulatory norms.

- For the current financial year also, the government had made a provision of ₹ 20,000 crore for recapitalisation.
- During 2019-20, the government had proposed to make a ₹ 70,000-crore capital infusion into the PSBs to boost credit for a strong impetus to the economy.
- However, the government refrained from committing any capital for the PSBs in the Budget 2020-21, hoping that the lenders will raise funds from the market depending on the requirements.

142. Ans. A.

The **priority sector** lending by commercial banks is monitored by **Reserve Bank of India** (RBI) through periodical returns received from them. *Priority Sector Lending* refers to those sectors of the economy which may not get timely and adequate credit in the absence of this special dispensation. *Priority Sector Lending* is an important role given by the Reserve Bank of India. Priority Sector includes the following categories:

- (i) Agriculture
- (ii) Micro, Small and Medium Enterprises
- (iii) Export Credit
- (iv) Education
- (v) Housing
- (vi) Social Infrastructure
- (vii) Renewable Energy
- (viii) Others (Weaker Section)

143. Ans. B.

The world's longest sandstone cave named Krem Puri was discovered near Laitsohum village, located in the Mawsynram area in Meghalaya's East Khasi Hills district

144. Ans. B.

- There are total 22 Ombudsman office.
- The Reserve Bank Friday has recently opened office of the Banking

Ombudsman and Ombudsman for Digital Transactions (ODT) at its New Delhi office that increased its number to 22.

145. Ans. C.

• **Jack Dorsey is the co-founder of Twitter.**

• It was **founded on March 21, 2006.**

• It is based in **San Francisco, California.**

146. Ans. C.

• The Reserve Bank of India (RBI) commenced its operations on 1 April 1935 during the British Rule in accordance with the provisions of the Reserve Bank of India Act, 1934.

• The original share capital was divided into shares of 100 each fully paid, which were initially owned entirely by private shareholders. Following India's independence on 15 August 1947, the **RBI was nationalized on 1 January 1949.**

147. Ans. C.

• Coinciding with the World Wetland Day, India got its first specialised institution - Centre for Wetland Conservation and Management (CWCM) - in Chennai which will work as a knowledge hub for various stakeholders for conserving wetlands that occupy 4.6% of the country's total land area.

• The CWCM has been set up as a part of the National Centre for Sustainable Coastal Management (NCSCM), Chennai.

• It will assist the national and state/UT governments in the design and implementation of policy and regulatory frameworks, management planning, monitoring and targeted research for conservation of wetlands.

148. Ans. E.

Electoral bonds can be purchased for any value in multiples of Rs 1,000, Rs

10,000, Rs 10 lakh, and Rs 1 crore from any of the specified branches of the State Bank of India. The life of the bond will be for **15 days**.

- The central government had on January 29, 2018, notified the electoral bond scheme.

- An Indian citizen or body incorporated in India will be eligible to purchase the bond.

- Electoral bonds can be used for making a donation only to the political parties registered under section 29A of the Representation of the People Act, 1951 (43 of 1951) and which secured not less than one per cent of the votes polled in the last general election to the House of the People or a Legislative Assembly.

- These bonds will not carry the name of the payee.

- **Authorised centre** - It can be purchased only from specified branches of **State Bank of India**.

- **Denomination** - Electoral bonds can be bought for any value, in multiples of Rs 1,000, Rs 10,000, Rs 1 lakh, Rs 10 lakh or Rs 1 crore.

- **Validity** - Electoral bonds will be **valid for 15 days** from the date of purchase.

149. Ans. D.

Mutual Funds are regulated in the country by Securities and Exchange Board of India

150. Ans. D.

- Padma Vibhushan awardee Ustad Ghulam Mustafa Khan was a legendary Indian classical musician.

- Born on March 3, 1931 in Badaun in Uttar Pradesh, Khan was the eldest son in a family of four brothers and three sisters.

- His father, Ustad Waris Hussain Khan was the son of celebrated musician Ustad Murred Baksh, while his mother, Sabri Begum, was the daughter of Ustad Inayat Husain

Khan, credited as the founder of the Rampur-Sahaswan gharana of music.

- Khan got his basic classical music training from his father and later studied music under his cousin, Ustad Nissar Hussain Khan.

- He was awarded the Padma Shri in 1991, followed by Padma Bhushan in 2006 and Padma Vibhushan in 2018.

- In 2003 he was awarded the Sangeet Natak Akademi award, the highest Indian recognition given to practicing artistes.

151. Ans. A.

- According to a report by Brand Finance, Accenture retained the title of world's most valuable and strongest IT services brand with a record brand value of \$26 billion, while IBM continued at the second place with brand value of \$16.1 billion.

152. Ans. C.

Nikkei is the stock market index of Japan.

153. Ans. D.

The award of 'ICC Men's T20I Cricketer of the Decade' has been awarded to **Rashid Khan**. The ICC Awards of the Decade recognize the best players across Cricket over the past ten years. The winners of this prestigious ICC Awards of the Decade were announced on December 28, 2020. Hence, option D is correct.

154. Ans. C.

- * The RBI divested its entire stake in NABARD and NHB amounting to ₹ 20 crore and ₹ 1450 crore respectively.

- * The Government of India now holds 100% stake in both the financial institutions.

155. Ans. A.

The headquarters of the 'United Nations World Tourism Organization' is situated in Madrid, Spain.

156. Ans. B.

West Bengal legislative assembly consists of 294 seats. West Bengal Legislative Assembly is the unicameral legislature of West Bengal. These 294 members are directly elected from single-seat constituencies. Its term is five years, unless it is dissolved sooner. Biman Banerjee of AITC is speaker of West Bengal Legislative Assembly.

157. Ans. C.

India Gets Re-elected as the President of International Solar Alliance. During a virtual meeting of the International Solar Alliance, India was re-elected as the President of the organization for a term of two years with France as the Co-President.

158. Ans. D.

The Hawker Culture in Singapore has been inscribed on the UNESCO's Representative List of the Intangible Cultural Heritage of the Humanity at the 15th session of the IGC (Intergovernmental Committee) that was held virtually.

The Hawker Culture in Singapore is a living heritage shared by those who prepare the hawker food and those who dine & mingle over hawker food in the community dining spaces called hawker centres.

It reflects Singapore's multicultural identity as the people & nation and resonates strongly with the Singaporeans across all races and social strata.

The particular List of the Intangible Cultural Heritage of UNESCO is made up of those intangible heritage elements which help demonstrate the diversity of the cultural heritage and raise the awareness about its importance.

The list was established in the year 2008 when the Convention for Safeguarding of the Intangible Cultural Heritage came into effect.

159. Ans. B.

• National Disaster Management Authority is chaired **by the Prime minister** of India.

• It was established through the Disaster Management Act enacted by the Government of India in December 2005.

• Its primary purpose is to coordinate response to natural or man-made disasters and for capacity-building in disaster resiliency and crisis response.

160. Ans. C.

• PayPal has decided to close its operation in India.

161. Ans. B.

• The Foxconn of toy world to set up India's first toy cluster in Karnataka

162. Ans. E.

Maradona scored 'hand of god' goal against England in 1986 World Cup.

163. Ans. A.

Sonalika Group became the first company to launch an Electric tractor in India.

164. Ans. B.

FASTag works on Radio Frequency Identification (RFID) technology.

165. Ans. C.

ASMI was India's first indigenous 9 mm machine pistol jointly developed by the Defence Research and Development Organisation (DRDO) and the Indian Army

166. Ans. D.

Depository Receipt is not related to 'bank to bank' transfer mechanism

167. Ans. B.

• Ustad Shahid Parvez Khan (commonly known as Shahid Parvez, born 14 October 1958) is an Indian classical sitar maestro from the Imdadkhani gharana. He was recently conferred the Kalajyoti Lifetime Achievement Award.

168. Ans. A.

- Prime Minister Shri Narendra Modi laid the foundation stone of Light House projects (LHPs) under Global Housing Technology Challenge (GHTC)- at six sites across six States, through video conference.

- The Light House Projects are to be implemented in

- Agartala (Tripura)
- Ranchi (Jharkhand)
- Lucknow (Uttar Pradesh) `
- Indore (Madhya Pradesh)
- Rajkot (Gujarat)
- Chennai (Tamil Nadu)

169. Ans. C.

- ICICI Bank, has inaugurated its representative office Kathmandu, marking the foray of an Indian private sector bank in Nepal.

- The representative office at the business district of Thapathali will closely work with domestic banks in Nepal to facilitate investment, trade, payments and treasury business between the two countries.

170. Ans. E.

- India's Anshu Malik won a silver medal in the 57kg category of women's wrestling at the Individual World Cup in Belgrade, Serbia. The 19-year-old Indian wrestler lost to Moldova's Anastasia Nichita 5-1 in the final.

171. Ans. A.

- Odisha's famous and oldest 'Adivasi Mela 2021' took place in the period January 26, 2021 to 09 February, 2021 in Bhubaneswar. State Chief Minister Naveen Patnaik inaugurated the grand 'mela'.

172. Ans. C.

- Tapovan Vishnugad is NTPC's second hydro power project since its foray into the sector. The 520 MW run-of-the-river project is situated on river Dhauliganga in Chamoli district of Uttarakhand.

173. Ans. C.

- As per International Energy Agency (IEA)'s 'India Energy Outlook 2021', India will overtake the European Union as the world's third-largest energy consumer by 2030.

- In the outlook, IEA saw primary energy consumption almost doubling to 1,123 million tonnes of oil equivalent as the Gross Domestic Product (GDP) expands to USD 8.6 trillion by 2040.

174. Ans. B.

- Bharatmala Pariyojana (Project) is a centrally-sponsored and funded Road and Highways project of the Government of India.

175. Ans. B.

- Reliance Industries Limited (RIL) will be setting up the world's largest zoo in Gujarat's Jamnagar district.

- The zoo will be built on 280 acres, In which more than 300 species of animals will live.

176. Ans. B.

- The maturity period for the SCSS scheme is 5 years.

- It can be extended for another 3 years, effectively bringing up the period to 8 years.

177. Ans. D.

- Markets regulator SEBI has barred Future Group CEO Kishore Biyani and his brother Anil from accessing securities market for a period of 1 year due to alleged insider trading between March and April 2017.

178. Ans. B.

- Asset reconstruction company and an asset management company (AMC) will be used for clean up of non-performing assets in the banking sector.

179. Ans. B.

- World's largest renewable energy park with a capacity of 30,000 megawatts (MW) from solar and wind energy has inaugurated in India.

180. Ans. A.

A. Struggle Is My Life is the autobiography of Nelson Mandela in which his political beliefs have been explained.

181. Ans. B.

- Union Budget has made space for easing norms around setting up of One Person Company (OPC) by reducing the residency limit of NRIs from 182 to 120 days.
- Earlier, only Indian resident citizens were allowed to form one person companies in India.

182. Ans. C.

- India Posts, Department of Posts (DOP), Ministry of Communications released a commemorative postage stamp on the 75th anniversary of the United Nations Organisations.

183. Ans. D.

- Flight Lieutenant Bhawana Kant is the first female fighter pilot to participate in the Republic Day Parade 2021. She hails from Darbhanga, Bihar.

184. Ans. B.

- USA's is planning to have the first nuclear reactor on the moon by the end of 2026.
- US Department of Energy has collaborated with NASA for setting up first nuclear reactor on the moon.

185. Ans. B.

- Rajeesh Sharma has been appointed as the new CEO of Ayushman Bharat scheme for a period of two years.
- He has replaced Indu Bhushan, who was the first CEO of Ayushman Bharat Scheme.

186. Ans. E.

- Irrfan Khan's first international movie is The Warrior, that was released in 2001.
- His other international movies are Namesake (2006), The Darjeeling Limited (2007), New York, I Love You (2008), The Amazing Spider-Man

(2012), Life of Pi (2012), Jurassic World (2015) and Inferno (2016).

187. Ans. D.

To improve credit discipline while continuing to protect the interest of small borrowers, for NBFCs with minimum asset size of `100 crores, the minimum loan size eligible for debt recovery under the Securitisation and Reconstruction of Financial Assets and Enforcement of Security Interest (SARFAESI) Act, 2002 is proposed to be reduced from the existing level of `50 lakhs to `20 lakhs.

188. Ans. D.

- As per the Energy Outlook 2021, published by the International Energy Agency (IEA), India will overtake the [European Union](#) as the world's third-largest energy consumer by 2030.

- India at present is the fourth-largest global energy consumer behind China, the United States and the European Union.

- India accounts for nearly one-quarter of global energy demand growth from 2019-40 -- the largest for any country. Its share in the growth in renewable energy is the second-largest in the world, after China.

- By 2040, India's power system is bigger than that of the European Union, and is the world's third-largest in terms of electricity generation; it also has 30 per cent more installed renewables capacity than the United States.

189. Ans. C.

- **Ranthambore National Park** is the fortieth largest national parks in northern India, covering **392 km²**.

- Ranthambore was established as the **Sawai Madhopur Game Sanctuary** in **1955** by the Government of India and was

declared one of the **Project Tiger reserves in 1973.**

• **It is located in Karnataka.**

190. Ans. B.

• In India, the National Pollution Control Day is observed every year on December 2 to commemorate the life of people lost in the unfortunate incident of Bhopal Gas Tragedy that occurred in the year 1984 on the night of 2–3 December.

• The year 2020 marks the 36th anniversary of the Bhopal Gas Tragedy.

• Through this day, awareness is created about the rising pollution of air, water, and soil, as well as shifts the attention of people with regards to the pollution control acts.

Prepp



Latest Sarkari jobs, Govt Exam alerts, Results and Vacancies

- ▶ Latest News and Notification
- ▶ Exam Paper Analysis
- ▶ Topic-wise weightage
- ▶ Previous Year Papers with Answer Key
- ▶ Preparation Strategy & Subject-wise Books

To know more [Click Here](#)



www.prepp.in