

SSC CHSL

Previous Year Paper

2021

(Held on: 25 May 2022 Shift 3)

English

Combined Higher Secondary Level Examination 2021 Tier I

Roll Number	
Candidate Name	
Venue Name	
Exam Date	25/05/2022
Exam Time	4:00 PM - 5:00 PM
Subject	CHSL 2021 Tier I

Section : English Language

Q.1 Select the most appropriate meaning of the given idiom.
A storm in a tea cup

- Ans 1. Tasty tea
 2. The tea in which spices are added
 3. A lot of anger and worry about trivial things
 4. To enjoy tea during a storm

Question ID : 26433039788
Status : Answered
Chosen Option : 3

Q.2 Select the option that will improve the underlined part of the given sentence.
I was look forward to helping you complete the project.

- Ans 1. look forward helping
 2. look forward to helping
 3. look forwarding to helps
 4. look forwarding to helping

Question ID : 26433042856
Status : Answered
Chosen Option : 1

Q.3 Select the INCORRECTLY spelt word.

- Ans 1. Leverage
 2. Oscilate
 3. Bonfire
 4. Ensue

Question ID : 26433045513
Status : Answered
Chosen Option : 2

Q.4 Select the denotation of the highlighted word.
The tie complements the shirt he is wearing.

- Ans 1. disarrays
 2. Relegates
 3. Matches
 4. Drains

Question ID : 26433045537
Status : Answered
Chosen Option : 3

Q.5 Select the option that expresses the given sentence in indirect speech.
He said, "It's been raining since last night."

- Ans 1. He said that it had rained since last night.
 2. He said that it had been raining since the night before.
 3. He's said that it had been raining since yesterday.
 4. He said that it's raining since last night.

Question ID : 26433042975
Status : Answered
Chosen Option : 2

Q.6 Select the denotation of the highlighted word.
His finicky attitude was the main cause of the conflict.

- Ans 1. Fussy
 2. Indolent
 3. Hasty
 4. Nervous

Question ID : 26433045533
Status : Answered
Chosen Option : 1

Q.7 Select the option that will improve the underlined part of the given sentence.
She bought the fine cloth in the store.

- Ans 1. more fine
 2. finest
 3. most fine
 4. finer

Question ID : 26433043012
Status : Answered
Chosen Option : 2

Q.8 Select the most appropriate ANTONYM of the given word.
Primitive

- Ans 1. Technical
 2. Racial
 3. Sophisticated
 4. Agricultural

Question ID : 26433039963
Status : Answered
Chosen Option : 3

Q.9 Select the most appropriate option to fill in the blank.
One day, I was handed a few volumes of new literature unlike anything I had ever read before and so _____ as to make me utterly forget my hopeless state.

- Ans 1. repelling
 2. captivating
 3. boring
 4. unrealistic

Question ID : 26433040136
Status : Answered
Chosen Option : 1

Q.10 Select the most appropriate meaning of the given idiom.
Tell upon

- Ans 1. To strike hard
 2. to advise someone
 3. To affect adversely
 4. To write down

Question ID : 26433042949
Status : Answered
Chosen Option : 2

Q.11 Select the most appropriate ANTONYM of the highlighted word.
They bestow upon him whatever he wishes

- Ans 1. intensify
 2. gift
 3. deny
 4. classify

Question ID : 26433045487
Status : Answered
Chosen Option : 3

Q.12 Select the option that can be used as a one-word substitute for the given group of words.
The study of population and its dynamics

- Ans 1. Democracy
 2. Demography
 3. Dysgraphia
 4. Dermatology

Question ID : 26433042958
Status : Answered
Chosen Option : 2

Q.13 Select the most appropriate option to fill in the blank.

The roof _____ the weight of the snow.

- Ans 1. collapsed under
 2. collapsed to
 3. collapsed with
 4. collapsed for

Question ID : 26433042833
Status : Answered
Chosen Option : 2

Q.14 Select the INCORRECTLY spelt word.

- Ans 1. Ministry
 2. Attention
 3. Attitude
 4. Mimikry

Question ID : 26433039794
Status : Answered
Chosen Option : 4

Q.15 Select the option that expresses the given sentence in active voice.
'Don Quixote' was written by Miguel Cervantes.

- Ans
- 1. Miguel Cervantes was writing 'Don Quixote'.
 - 2. Miguel Cervantes wrote 'Don Quixote'.
 - 3. Miguel Cervantes had written 'Don Quixote'.
 - 4. Miguel Cervantes has written 'Don Quixote'.

Question ID : 26433039761
Status : Answered
Chosen Option : 2

Q.16 In the following questions a statement has been given with highlighted text. Select the options that can replace the text with correct idiom or phrase.
The trainee performed the task with extreme ease.

- Ans
- 1. At the eleventh hour
 - 2. Call it a day
 - 3. Swan song
 - 4. A piece of cake

Question ID : 26433045509
Status : Answered
Chosen Option : 4

Q.17 The following sentence has been split into four segments. Identify the segment that contains a grammatical error.
He has been / excused by the teacher / by the time a formal complaint / for bullying was made.

- Ans
- 1. excused by the teacher
 - 2. for bullying was made
 - 3. by the time a formal complaint
 - 4. He has been

Question ID : 26433039738
Status : Answered
Chosen Option : 4

Q.18 The following sentence has been split into four segments. Identify the segment that contains an INCORRECTLY spelt word.
The mother's tired and overrought mind could not process / the information of the demise of her only son / and she sat like a statue even when her / tormentors passed several obnoxious comments.

- Ans
- 1. her tormentors passed several obnoxious comments
 - 2. The mother's tired and overrought mind could not process
 - 3. the information of the demise of her only son
 - 4. and she sat like a statue even when her

Question ID : 26433045553
Status : Answered
Chosen Option : 2

Q.19 Select the most appropriate option that can substitute the underlined segment in the given sentence. If there is no need to substitute it, select 'No substitution required'.
Manoj was living in the city since 1993.

- Ans 1. has been living
 2. No substitution required
 3. is living
 4. will be living

Question ID : 26433039913

Status : Answered

Chosen Option : 1

Q.20 Sentences of a paragraph are given below in jumbled order. Arrange the sentences in the correct order to form a meaningful and coherent paragraph.

- A. His mother, whose name no one knows, is found on the street, and dies just after Oliver's birth.
B. After the other boys bully Oliver into asking for more gruel at the end of a meal, Mr. Bumble offers five pounds to anyone who will take the boy away from the workhouse.
C. Oliver Twist is born in a workhouse in 1830s England.
D. Oliver spends the first nine years of his life in a badly run home for young orphans and then is transferred to a workhouse for adults.

- Ans 1. CBDA
 2. CDAB
 3. BDCA
 4. CADB

Question ID : 26433042878

Status : Answered

Chosen Option : 4

Comprehension:

In the following passage, some words have been deleted. Fill in the blanks with the help of the options given. Select the most appropriate option for each blank.

In terms of education, children must receive proper care, (1)_____ and schooling. By (2)_____ child marriage, the best possible future of children can be (3)_____. When there is an economic crisis, many programmes must be held so that they can (4)_____ how to fight for themselves (5)_____ and efficiently.

SubQuestion No : 21

Q.21 Select the most appropriate option to fill in blank No.1.

- Ans 1. guidance
 2. dress
 3. food
 4. help

Question ID : 26433045701

Status : Answered

Chosen Option : 1

Comprehension:

In the following passage, some words have been deleted. Fill in the blanks with the help of the options given. Select the most appropriate option for each blank.

In terms of education, children must receive proper care, (1)_____ and schooling. By (2)_____ child marriage, the best possible future of children can be (3)_____. When there is an economic crisis, many programmes must be held so that they can (4)_____ how to fight for themselves (5)_____ and efficiently.

SubQuestion No : 22**Q.22 Select the most appropriate option to fill in blank No.2.**

- Ans 1. violating
 2. allowing
 3. ignoring
 4. outlawing

Question ID : 26433045702

Status : Answered

Chosen Option : 4

Comprehension:

In the following passage, some words have been deleted. Fill in the blanks with the help of the options given. Select the most appropriate option for each blank.

In terms of education, children must receive proper care, (1)_____ and schooling. By (2)_____ child marriage, the best possible future of children can be (3)_____. When there is an economic crisis, many programmes must be held so that they can (4)_____ how to fight for themselves (5)_____ and efficiently.

SubQuestion No : 23**Q.23 Select the most appropriate option to fill in blank No.3.**

- Ans 1. envisioned
 2. navigated
 3. awaited
 4. scheduled

Question ID : 26433045703

Status : Answered

Chosen Option : 1

Comprehension:

In the following passage, some words have been deleted. Fill in the blanks with the help of the options given. Select the most appropriate option for each blank.

In terms of education, children must receive proper care, (1)_____ and schooling. By (2)_____ child marriage, the best possible future of children can be (3)_____. When there is an economic crisis, many programmes must be held so that they can (4)_____ how to fight for themselves (5)_____ and efficiently.

SubQuestion No : 24**Q.24 Select the most appropriate option to fill in blank No.4.**

- Ans 1. Learn
 2. Plan
 3. Educate
 4. teach

Question ID : 26433045704

Status : Answered

Chosen Option : 1

Comprehension:

In the following passage, some words have been deleted. Fill in the blanks with the help of the options given. Select the most appropriate option for each blank.

In terms of education, children must receive proper care, (1)_____ and schooling. By (2)_____ child marriage, the best possible future of children can be (3)_____. When there is an economic crisis, many programmes must be held so that they can (4)_____ how to fight for themselves (5)_____ and efficiently.

SubQuestion No : 25

Q.25 Select the most appropriate option to fill in blank No.5.

- Ans 1. Eloquently
 2. effectively
 3. abruptly
 4. Affectively

Question ID : 26433045705
Status : Answered
Chosen Option : 1

Section : General Intelligence

Q.1 In a certain code language, 'GOLD' is written as 'HPME', and 'FAKE' is written as 'GBLF'. How will 'SOAP' be written in that language?

- Ans 1. TPQB
 2. TBPQ
 3. PTBQ
 4. TPBQ

Question ID : 26433045351
Status : Answered
Chosen Option : 4

Q.2 Select the correct mirror image of the given combination when the mirror is placed at MN as shown.

FG62sPt
M
|
N

- Ans 1. j9z2d0f
 2. 9z2d0f
 3. 29z2d0f
 4. 9z2d0f

Question ID : 26433040382
Status : Answered
Chosen Option : 1

Q.3 Select the correct combination of mathematical signs to replace the * signs and to balance the given equation.

$$64*4*3*71*19*5*43$$

- Ans
- 1. -,+,x,=,-,-,x
 - 2. +,=,x,+,+,-,+
 - 3. x,+,=,-,x,-
 - 4. +,+,=,-, x,+

Question ID : 26433040235

Status : Answered

Chosen Option : 4

Q.4 Pointing to a woman in a picture, Taran said, "She is the mother of the father-in-law of my husband". How is Taran related to that woman?

- Ans
- 1. Mother
 - 2. Granddaughter
 - 3. Sister
 - 4. Daughter

Question ID : 26433039312

Status : Answered

Chosen Option : 2

Q.5 The second number in the given number pairs is obtained by performing certain mathematical operation(s) on the first number. The same operation(s) are followed in all the number pairs, except one. Find that odd number pair.

- Ans
- 1. 3 : 7
 - 2. 15 : 63
 - 3. 8 : 26
 - 4. 23 : 123

Question ID : 26433039316

Status : Answered

Chosen Option : 4

Q.6 Which of the following numbers will replace the question mark (?) in the given series?
4, 9, 17, 30, 50, 81, 125, ?

- Ans
- 1. 186
 - 2. 166
 - 3. 168
 - 4. 163

Question ID : 26433045197

Status : Answered

Chosen Option : 1

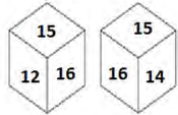
Q.7 Select the option that is related to the third word in the same way as the second word is related to the first word. (The words must be considered as meaningful English words and must NOT be related to each other based on the number of letters/number of consonants/vowels in the word)

Cow : Bull :: Mice : ?

- Ans
- 1. Cat
 - 2. Fox
 - 3. Mouse
 - 4. Dog

Question ID : 26433045084
Status : Answered
Chosen Option : 3

Q.8 Two different positions of the same dice are shown, the six faces of which are numbered from 11 to 16. Select the number that will be on the face opposite to the one showing '12'.



- Ans
- 1. 13
 - 2. 16
 - 3. 14
 - 4. 11

Question ID : 26433040185
Status : Answered
Chosen Option : 2

Q.9 If A denotes '+', B denotes '×', C denotes '-' and D denotes '÷', then what will come in place of '?' in the following equation?
41 C 29 A (38 B 3) D 19 A 61 C 17 = ?

- Ans
- 1. 70
 - 2. 66
 - 3. 58
 - 4. 62

Question ID : 26433043356
Status : Answered
Chosen Option : 4

Q.10 Select the option that is related to the third term in the same way as the second term is related to the first term and the sixth term is related to the fifth term.
25 : 4 :: 64 : ? :: 225 : 14

- Ans
- 1. 8
 - 2. 10
 - 3. 7
 - 4. 9

Question ID : 26433045026
Status : Answered
Chosen Option : 3

Q.11 Which of the following numbers will replace the question mark (?) in the given series?
569, 526, 483, 440, 397, ?

- Ans 1. 369
 2. 340
 3. 326
 4. 354

Question ID : 26433043251
Status : Answered
Chosen Option : 4

Q.12 In a certain code language, 'FLEECE' is written as 'EFCLEE' and 'OVERCOAT' is written as 'TOAVOECR'. How will 'MITTEN' be written in that language?

- Ans 1. NMIETT
 2. NMEITT
 3. NMETIT
 4. NEMITT

Question ID : 26433045061
Status : Answered
Chosen Option : 2

Q.13 Select the correct combination of mathematical signs to replace the * signs and to balance the given equation.
 $31 * 29 * 43 * 85 * 5$

- Ans 1. +, x, =, -
 2. +, -, =, +
 3. +, +, =, x
 4. =, +, -, +

Question ID : 26433040225
Status : Answered
Chosen Option : 2

Q.14 Which letter-cluster will replace the question mark (?) to complete the given series?
ZFOE, PYUA, FRAW, VKES, ?

- Ans 1. KDIO
 2. KCIO
 3. LDIO
 4. LCIO

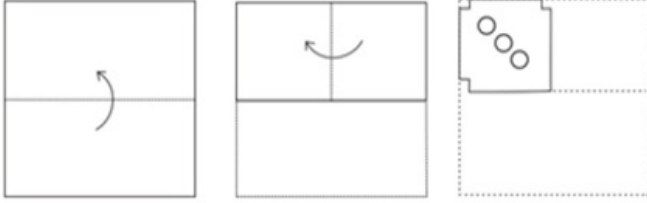
Question ID : 26433045270
Status : Answered
Chosen Option : 3

Q.15 The second number in the given number pairs is obtained by performing certain mathematical operation(s) on the first number. The same operation(s) are followed in all the number pairs EXCEPT one. Find that odd number pair.

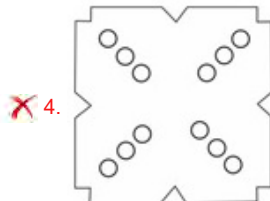
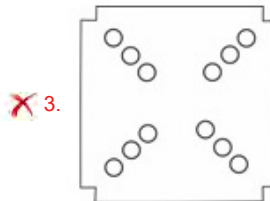
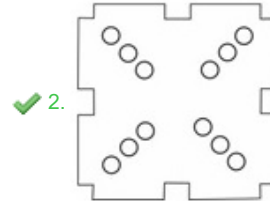
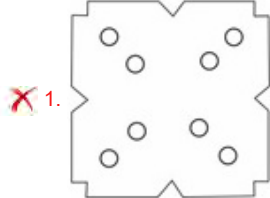
- Ans 1. 33 - 24
 2. 54 - 36
 3. 45 - 30
 4. 48 - 32

Question ID : 26433045321
Status : Answered
Chosen Option : 1

Q.16 A paper is folded and cut as shown. How will it appear when unfolded?



Ans



Question ID : 26433045999

Status : Answered

Chosen Option : 2

Q.17 Select the option that is related to the fifth term in the same way as the second term is related to the first term and fourth term related to third term.

9 : 270 :: 15 : 450 :: 13 : ?

Ans 1. 390

2. 385

3. 380

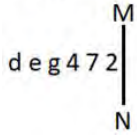
4. 395

Question ID : 26433043565

Status : Answered

Chosen Option : 1

Q.18 Select the correct mirror image of the given combination when the mirror is placed at MN as shown.



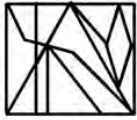
- Ans
- 1. 2 7 4 g e b
 - 2. 2 7 4 g e p
 - 3. 2 7 4 g e b
 - 4. 2 7 4 g e p

Question ID : 26433040167

Status : Answered

Chosen Option : 3

Q.19 Select the option figure which is embedded in the given figure as its part (rotation is NOT allowed).



- Ans
- 1.
 - 2.
 - 3.
 - 4.

Question ID : 26433040461

Status : Answered

Chosen Option : 4

Q.20 Which letter-cluster will replace the question mark (?) to complete the given series?
ERKV, HYVK, ?, NMRO, QTCD

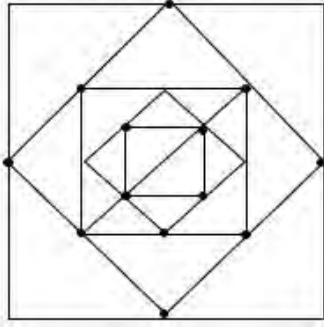
- Ans
- 1. KFGZ
 - 2. KSEV
 - 3. FNQI
 - 4. KXGW

Question ID : 26433044972

Status : Answered

Chosen Option : 1

Q.21 How many triangles are there in the given figure?



- Ans
- 1. 28
 - 2. 26
 - 3. 22
 - 4. 24

Question ID : 26433040531
Status : Answered
Chosen Option : 2

Q.22 Select the option that represents the correct order of the given words as they would appear in an English dictionary.

- 1.Vantage
- 2.Wherefore
- 3.Uplift
- 4.Various
- 5.Variety
- 6.Valor

- Ans
- 1. 3,6,1,5,4,2
 - 2. 3,1,6,4,5,2
 - 3. 3,6,1,4,5,2
 - 4. 6,3,1,5,4,2

Question ID : 26433039295
Status : Answered
Chosen Option : 1

Q.23 In a certain code language, 'COMPUTER' is written as 'RETUCOMP' and 'LAPTOP' is written as 'POTLAP'. How will 'BOTTLE' be written in that language?

- Ans
- 1. ELTBOT
 - 2. ELTBTO
 - 3. ETLBOT
 - 4. ELTTOB

Question ID : 26433040761
Status : Answered
Chosen Option : 4

Q.24 Which of the following numbers will replace the question mark (?) in the given series?
14, 14, 12, 36, 32, 160, ?

- Ans
- 1. 150
 - 2. 166
 - 3. 154
 - 4. 145

Question ID : 26433045225
Status : Answered
Chosen Option : 3

Q.25 Three Statements are given followed by Three conclusions numbered I, II and III. Assuming the statements to be true, even if they seem to be at variance with commonly known facts, decide which of the conclusions logically follow(s) from the statements.

Statements:

All books are copies.

No copy is a pen.

Some erasers are books.

Conclusions:

I. Some copies are erasers.

II. Some pens are books.

III. No eraser is a pen.

- Ans
- 1. Only conclusion II follows.
 - 2. Both conclusions I and II follow.
 - 3. Both conclusions I and III follow.
 - 4. Only conclusion I follows.

Question ID : 26433043206

Status : Answered

Chosen Option : 4

Section : Quantitative Aptitude

Q.1 If the average of n quantities is P and the average of m quantities is Q , then the average of $(m + n)$ quantities is:

- Ans
- 1. $\frac{nP+mQ}{m-n}$
 - 2. $\frac{mP+nQ}{m+n}$
 - 3. $\frac{nP+mQ}{P+Q}$
 - 4. $\frac{nP+mQ}{m+n}$

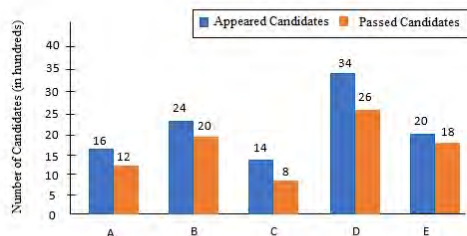
Question ID : 26433041363

Status : Answered

Chosen Option : 4

Q.2 Study the given graph and answer the question that follows.

The graph shows the number of appeared candidates and passed candidates (in hundreds) in a test from six different institutions.



Also, the question should be "What is the average number (in hundreds) of candidates to have passed per institution?"

- Ans
- 1. 1460
 - 2. 1280
 - 3. 1500
 - 4. 1680

Question ID : 26433039221

Status : Answered

Chosen Option : 4

Q.3 A software company has only 3 divisions that have 20, 30 and 40 employees, respectively. If the working percentage of this during a weekend were 20%, 30% and 40%, respectively, then the working percentage of the entire company during that weekend was approximately:

- Ans
- 1. 0.0032
 - 2. 3.2
 - 3. 0.032
 - 4. 32

Question ID : 26433042554
Status : Answered
Chosen Option : 2

Q.4 If $r + \frac{64}{r} = 16$, then the value of $r^4 + \frac{1}{r^3}$ is _____.

- Ans
- 1. $4096 \frac{1}{512}$
 - 2. 512
 - 3. $512 \frac{1}{4096}$
 - 4. 4096

Question ID : 26433042662
Status : Answered
Chosen Option : 1

Q.5 There are two types of milk. The price of one type of milk is ₹70/litre and the price of other type of milk is ₹50/litre. If the two types of milk are mixed, the price of new mixture will be ₹55/litre. Find the ratio of the two types of milk in this new mixture.

- Ans
- 1. 1 : 1
 - 2. 1 : 2
 - 3. 1 : 4
 - 4. 1 : 3

Question ID : 26433041465
Status : Answered
Chosen Option : 4

Q.6 A man completes a journey in ten hours. He travels at a speed of 21 km/h for the first half of the journey and at a speed of 24 km/h for the second half. Calculate the total distance travelled (in kilometres).

- Ans
- 1. 212
 - 2. 224
 - 3. 235
 - 4. 230

Question ID : 26433044043
Status : Answered
Chosen Option : 2

Q.7 The radii of two circles are 4 cm and 7 cm and the distance between their centres is 12 cm. Find the length of the direct common tangent to the circles.

- Ans
- 1. $3\sqrt{6}$ cm
 - 2. $2\sqrt{6}$ cm
 - 3. $2\sqrt{15}$ cm
 - 4. $3\sqrt{15}$ cm

Question ID : 26433041439
Status : Answered
Chosen Option : 4

Q.8 If $p = 11$, then the value of $p(p^2 + 3p + 3)$ is:

- Ans
- 1. 1629
 - 2. 1225
 - 3. 1727
 - 4. 1111

Question ID : 26433039203
Status : Answered
Chosen Option : 3

Q.9 $24 - [52 - \{4 + 10 \times (-3)\}] = ?$

- Ans
- 1. 54
 - 2. -54
 - 3. -44
 - 4. 44

Question ID : 26433041509
Status : Answered
Chosen Option : 2

Q.10 The ratio of income of A to that of B is 4 : 3 . The expenditure of A is $\frac{5}{12}$ of his income and the expenditure of B is $\frac{7}{15}$ of his income. The difference between their expenditures is ₹ 4,500. Find the income of B.

- Ans
- 1. ₹49,625
 - 2. ₹48,625
 - 3. ₹51,625
 - 4. ₹50,625

Question ID : 26433042423
Status : Answered
Chosen Option : 4

Q.11 The value of $(1 + \tan 10^\circ)(1 + \tan 35^\circ)$ is:

- Ans
- 1. $\frac{1}{2}$
 - 2. $\frac{3}{4}$
 - 3. 1
 - 4. 2

Question ID : 26433041447
Status : Answered
Chosen Option : 4

Q.12 The volume of a sphere is $288\pi \text{ cm}^3$. Find its surface area.

- Ans
- 1. $114\pi \text{ cm}^2$
 - 2. $124\pi \text{ cm}^2$
 - 3. $134\pi \text{ cm}^2$
 - 4. $144\pi \text{ cm}^2$

Question ID : 26433042454
Status : Answered
Chosen Option : 4

Q.13 In an election, the winning candidate received 15744 votes, which are 48% of the electorate. The only other candidate received 22% of the electorate. What is the number of members who did NOT vote?

- Ans
- 1. 9860
 - 2. 9870
 - 3. 9840
 - 4. 9850

Question ID : 26433039112
Status : Answered
Chosen Option : 3

Q.14 Study the given table and answer the question that follows.

The table shows loans disbursed by five banks (in ₹ crore) from 1982 to 1986.

Bank	1982	1983	1984	1985	1986
A	18	23	45	30	70
B	27	33	18	41	37
C	29	28	22	17	11
D	31	16	28	32	43
E	13	19	27	34	42
Total	118	119	140	154	203

In which of the following banks did the disbursement of loan continuously decrease over the years?

- Ans 1. C
 2. D
 3. A
 4. B

Question ID : 26433045984
Status : Answered
Chosen Option : 1

Q.15 The price of a certain laptop is discounted by 20% and the reduced price is then discounted by 20%. This series of successive discounts is equivalent to a single discount of:

- Ans 1. 20%
 2. 26%
 3. 30%
 4. 36%

Question ID : 26433042698
Status : Answered
Chosen Option : 4

Q.16 A man sells goods at 4% loss on cost price but he gives 20 g instead of 40 g. What is his profit or loss percentage?

- Ans 1. 84% profit
 2. 92% profit
 3. 82% loss
 4. 92% loss

Question ID : 26433039236
Status : Answered
Chosen Option : 2

Q.17 A can do a piece of work in 12 days and B can do it in 30 days. They work on alternate days; starting with A. In how many days will the work be completed?

- Ans
- 1. $16\frac{4}{5}$
 - 2. $17\frac{1}{7}$
 - 3. $16\frac{4}{7}$
 - 4. $17\frac{2}{5}$

Question ID : 26433043961
Status : Answered
Chosen Option : 1

Q.18 Two trains each 200m long are moving in opposite directions. They cross each other in 10 seconds. If the speed of one train is 90km/h, find the speed of the other train.

- Ans
- 1. 90 km/h
 - 2. 45 km/h
 - 3. 54 km/h
 - 4. 36 km/h

Question ID : 26433041467
Status : Answered
Chosen Option : 3

Q.19 The distance travelled by a person varies directly with the duration of the journey. If the person travels 378 km in 7 hours, in how many hours will the person cover 918 km?

- Ans
- 1. 16
 - 2. 15
 - 3. 18
 - 4. 17

Question ID : 26433043945
Status : Answered
Chosen Option : 4

Q.20 A sum of ₹16,875, when invested at r% interest per year compounded annually, amounts to ₹19,683 after 2 years. What is the value of r?

- Ans
- 1. 8
 - 2. 7
 - 3. 6
 - 4. 9

Question ID : 26433043947
Status : Answered
Chosen Option : 1

Q.21 The lengths of the three sides of a triangle are 3 cm, 4 cm and 5 cm respectively. Find the area of this triangle.

- Ans 1. 6 cm^2
 2. 12 cm^2
 3. 8 cm^2
 4. 10 cm^2

Question ID : 26433042452
Status : Answered
Chosen Option : 1

Q.22 What is the least positive value of A in the number 34278A2597, which is divisible by 9?

- Ans 1. 7
 2. 2
 3. 1
 4. 8

Question ID : 26433041361
Status : Answered
Chosen Option : 1

Q.23 Study the given table and answer the question that follows.

The table shows the number of runs scored by a cricket player in different countries in different years.

Year/ Country	Country A	Country B	Country C	Country D
2018	30	45	50	38
2019	25	32	40	50
2020	25	35	38	50
2021	52	29	45	62

In which country did the player score the maximum number of runs in aggregate during these four years, taken together?

- Ans 1. D
 2. A
 3. B
 4. C

Question ID : 26433045913
Status : Answered
Chosen Option : 1

Q.24 A shopkeeper offers 25% discount on all table lamps. He offers a further discount of 8% on the reduced price to those customers who pay cash. What does a customer have to pay in cash for a table lamp of ₹2,500?

- Ans 1. ₹1,725
 2. ₹1,865
 3. ₹2,220
 4. ₹1,780

Question ID : 26433038687
Status : Answered
Chosen Option : 1

Q.25 A rectangular water tank is 1.5 m high, 3 m long and 3.5 m wide. How much water (in litres) can it hold?

- Ans 1. 13520
 2. 14510
 3. 15750
 4. 11780

Question ID : 26433044135
Status : Answered
Chosen Option : 3

Section : General Awareness

Q.1 Due to the service done by the poet _____, the Kathakali dance form received a new impetus and today, many innovations are also being made to suit the needs of a changing society.

- Ans 1. Purandara Dasa
 2. Vallathol Narayana Menon
 3. Satchidanandan
 4. Gopal Bhatta

Question ID : 26433044632
Status : Answered
Chosen Option : 2

Q.2 How do the red algae reproduce vegetatively?

- Ans 1. Fission
 2. Spore formation
 3. Cutting
 4. Fragmentation

Question ID : 26433039426
Status : Answered
Chosen Option : 2

Q.3 How many players were honoured with the Major Dhyan Chand Khel Ratna Award in 2021?

- Ans 1. 14
 2. 18
 3. 16
 4. 12

Question ID : 26433042028
Status : Not Answered
Chosen Option : --

Q.4 Which of the following is a type of large, brown seaweed that grows in shallow, nutrient-rich salt water near coastal fronts around the world?

- Ans 1. Alpina
 2. Kelp
 3. Seagrass
 4. Corals

Question ID : 26433044859
Status : Answered
Chosen Option : 1

Q.5 Pritam Rani Siwach who received the prestigious 2021 Dronacharya Award contributed to the field of:

- Ans 1. para shooting
 2. athletics
 3. hockey
 4. boxing

Question ID : 26433042037
Status : Answered
Chosen Option : 1

Q.6 Padma Shri awardee Guru Gangadhar Pradhan is an accomplished dancer of which of the following dance forms?

- Ans 1. Manipuri
 2. Kathakali
 3. Odissi
 4. Kathak

Question ID : 26433041773
Status : Answered
Chosen Option : 3

Q.7 Who among the following is a famous violinist?

- Ans 1. Sajjad Hussain
 2. Anoushka Shankar
 3. Krishna R Chaudhary
 4. Nagai R Muralidharan

Question ID : 26433038777
Status : Answered
Chosen Option : 1

Q.8 When the government resorts to borrowing only to clear the backlog if interest payments, it is referred to as _____.

- Ans 1. zero revenue deficit
 2. zero primary deficit
 3. zero fiscal deficit
 4. excess budget deficit

Question ID : 26433042044
Status : Not Answered
Chosen Option : --

Q.9 The term 'header' is associated to which of the following sports?

- Ans 1. Football
 2. Cricket
 3. Hockey
 4. Basketball

Question ID : 26433044508
Status : Answered
Chosen Option : 4

Q.10 Identify the wrong pair with respect to different motions and their examples.

- Ans 1. Periodic motion - Earth rotating on its axis
 2. Rectilinear motion - A stone thrown up in the air at an angle
 3. Rotational motion - Blades of a windmill
 4. Oscillatory motion - A boat tossing up and down a river

Question ID : 26433041889

Status : Answered

Chosen Option : 4

Q.11 'The Great Indian Novel', a satirical novel that recreates the Hindu epic Mahabharata within the context of the Indian National Movement, is written by which of the following writers who is a member of the Indian Parliament?

- Ans 1. Shashi Tharoor
 2. Arun Shourie
 3. Abhijeet Banerjee
 4. Amiya Kumar Bagchi

Question ID : 26433042304

Status : Answered

Chosen Option : 1

Q.12 Identify the group of the periodic table to which cobalt belongs.

- Ans 1. Group 6
 2. Group 9
 3. Group 5
 4. Group 7

Question ID : 26433039411

Status : Not Attempted and Marked For Review

Chosen Option : --

Q.13 Which of the following mountains is formed as a result of the compression of tectonic plates, leading to the formation of large fold-like structures on the Earth's crust?

- Ans 1. Ural mountain in Russia
 2. Vosges mountain in Europe
 3. Mt. Kilimanjaro in Africa
 4. Harz mountains in Germany

Question ID : 26433044791

Status : Not Answered

Chosen Option : --

Q.14 B Herambanathan who was awarded with the 'Sangeet Natak Akademi Award' in 2013 is a _____ dancer.

- Ans 1. Odissi
 2. Kuchipudi
 3. Bharatanatyam
 4. Kathak

Question ID : 26433042280

Status : Not Answered

Chosen Option : --

Q.15 Which Article of the Indian Constitution states that “Supreme Court to be a court of record”?

- Ans 1. Article 135
 2. Article 126
 3. Article 129
 4. Article 131

Question ID : 26433039638
Status : Answered
Chosen Option : 2

Q.16 Hariprasad Chaurasia is associated with which of the following instruments?

- Ans 1. Shehnai
 2. Bansuri
 3. Sarod
 4. Tabla

Question ID : 26433038821
Status : Answered
Chosen Option : 4

Q.17 In July 2021, Kiren Rijju was made the Cabinet Minister and given the charge of which of the following ministries?

- Ans 1. Ministry of Communication and Electronics and Information Technology
 2. Ministry of Civil Aviation
 3. Ministry of Ports and Shipping
 4. Ministry of Law and Justice

Question ID : 26433044391
Status : Answered
Chosen Option : 1

Q.18 How is tuberculosis spread in humans?

- Ans 1. Inoculation into skin
 2. Droplet infection
 3. Direct touching
 4. Contact with soil

Question ID : 26433039428
Status : Answered
Chosen Option : 2

Q.19 ‘Moon Walk’ is an autobiography of ____.

- Ans 1. Oscar Wilde
 2. Marlon Brando
 3. Michael Jackson
 4. Anne Frank

Question ID : 26433039600
Status : Answered
Chosen Option : 3

Q.20 Who among the following personalities is associated with the Mohiniattam dance?

- Ans 1. Yamini Krishnamurthy
 2. Jayaprabha Menon
 3. Prerana Shrimali
 4. Vyjayanthi Kashi

Question ID : 26433038969
Status : Answered
Chosen Option : 1

Q.21 What is the name of the autobiography written by Mr Abhinav Bindra, the Olympic medallist from India?

- Ans 1. An Autobiography
 2. A shot at History
 3. Courage and Conviction
 4. All from Memory

Question ID : 26433041697
Status : Answered
Chosen Option : 2

Q.22 WINTER Olympics 2026 will be hosted by which of the following countries?

- Ans 1. Spain
 2. Brazil
 3. The US
 4. Italy

Question ID : 26433044497
Status : Answered
Chosen Option : 2

Q.23 In which year did Hindustani Classical vocalist Rashid Khan receive the Padma Bhushan award?

- Ans 1. 2019
 2. 2020
 3. 2021
 4. 2022

Question ID : 26433041940
Status : Not Answered
Chosen Option : --

Q.24 Who among the following founded Odissi dance school 'SRJAN' in 1993?

- Ans 1. Kumkum Mohanty
 2. Ratikant Mohapatra
 3. Madhavi Mudgal
 4. Kelucharan Mohapatra

Question ID : 26433038806
Status : Not Answered
Chosen Option : --

Q.25 The Ganga plain extend between which two rivers?

Ans 1. Yamuna and Teesta

2. Ghaggar and Teesta

3. Ghaggar and Bhagirathi

4. Ganga and Teesta

Question ID : **26433039491**

Status : **Answered**

Chosen Option : **3**