



Practice, Learn and Achieve
Your Goal with Prepp

RRB NTPC Exam

Previous Paper

Simplifying
Government Exams



SSC CHSL



IAS EXAM



RRB NTPC



NTSE



CDS



SSC CGL



CBSE UGC NET



IBPS PO



NDA



SBI PO



IBPS CLERK



AFCAT



SSC JE



CTET



CSIR UGC NET



CAPF



IBPS RRB

www.prepp.in

RRB NTOPC 2016 19th April 2016 Shift 1

Instructions

For the following questions answer them individually

Question 1

If 'summer is hot' is coded as 'de fe ba' and 'come cold summer' as 'ja ha ba' and 'winter is cold' as 'pa ja de' then 'come hot winter' is coded as

A de ha ja

B te ha pa

C ba pa ha

D pa ha fe

Answer: D

Explanation:

If we see all the codes for different line

summer is hot	winter is cold	come cold summer
de fe ba	pa ja de	ja ha ba

we can see that the code for different words are

summer = ba

is = de

cold = ja

therefore we can deduce that code for

come = ha

hot = fe

winter = pa

hence the correct answer for this is option D

Question 2

What is the minimum number to be subtracted from 6321, which makes it completely divisible by 14?

A 8

B 12

C 7

D 11

Answer: C

Explanation:

A number is divisible by 14 only when it is divisible by both the factor of 14 i.e 7 and 2

we know a number is divisible by 2 when the last digit of the number is even

we also know that a number is divisible by 7 when the double of last two digits of the number, when subtracted by the remaining number gives 0 or different multiple of 7

so if we subtract 7 from the number we get an even number and a number divisible by 7 hence making the number divisible by 14

Prepp

$$\begin{array}{r}
 451 \\
 14 \overline{) 6321} \\
 \underline{14} \\
 72 \\
 \underline{70} \\
 21 \\
 \underline{14} \\
 7
 \end{array}$$

Hence, required no. is 7.

Question 3

Jahangir was the.....Mughal emperor of India.

A 3rd

B 4th

C 5th

D 6th

Answer: B

Explanation:

Babur--->Humayun---> Akbar--->Jahagir hence jahagir was the 4th ruler of the mughals

Question 4

If P means ' \div ', R means ' \times ', Q means '+' and S means '-' then $48 \text{ P } 8 \text{ Q } 6 \text{ R } 9 \text{ S } 31 = ?$

A 60

B 29

C 31

D 54

Answer: B

Explanation:

$$= 48 \div 8 + 6 \times 9 - 31$$

$$= 6 + 54 - 31$$

$$= 29$$

Question 5

..... granted charter to East India Company to establish trading posts in India in 1600.

A Queen Elizabeth I

B Queen Elizabeth II

C King George V

D King George VI

Answer: A

Question 6

Ramdas invested Rs. 90000 in a cosmetic business. After few months, Shyamdas joined him with Rs. 30000. At the end of the year, the total profit was divided between them in ratio 4 : 1. After how many months did Shyamdas joined business?

- A 4
- B 3
- C 1
- D 6

Answer: B

Explanation:

given,

ramdas invested rs 90000 and shyamdas invested rs 30000

let, ramdas invested for 12 months and shyamdas invested of x months

we know

$\text{profit} = \text{investment} \times \text{time}$

ratio of profit given = 4 : 1

$$\frac{4}{1} = \frac{90000 \times 12}{30000 \times x}$$

therefore x = 9

hence shyamdas invested for 9 month which means he joined after (12 - 9) months = 3 months

so option B is the answer

Question 7

Methane is known as

- A Laughing gas
- B Tear gas
- C Marsh gas
- D Non-greenhouse gas

Answer: C

Question 8

Hawa Mahal in Jaipur is constructed using

- A White and green marble
- B Granite
- C Red and Pink sandstone
- D Normal rocks

Answer: C

Question 9

If the angles of a triangle are in the ratio of 1:2:3, then find the value of the largest angle.

- A 30°
- B 60°
- C 90°
- D 120°

Answer: C

Explanation:

Let angle triangle be $x, 2x, 3x$

Sum of angles of triangle is 180

so $6x = 180$

$x = 30$

larger angle $3x = 90$

Question 10

Read the given statements carefully and answer the question.

Statement: Though the school bags policy has been announced, it is not clear how many schools are following it. The state Government is also clueless whether schools have implemented the rules. Which of the following is true according to the given statement?

- A School bags policy has been implemented by the Government.
- B Schools are not interested in following the rules.
- C There is no monitoring system.
- D State Government is not interested in follow-up.

Answer: C

Explanation:

There is no monitoring system.

Since the government does not know how many schools have implemented or not, there is no monitoring system. therefore it is true

Question 11

The concept of the game of eliminating an opponent by touching.

- A Kho Kho
- B Table Tennis
- C Judo
- D Kalari

Answer: A

Question 12

The mean of 22 observations is 10. Two more observations are included and the new mean becomes 11. The mean of two new observations is

- A 19
- B 20
- C 21
- D 22

Answer: D

Explanation:

Total sum of 22 observations = $22 \times 10 = 220$

Total sum of 24 observations = $24 \times 11 = 264$

sum of 2 new observation = $264 - 220 = 44$

Means of 2 new observation = $44 / 2 = 22$

Question 13

An angle is 10° more than its complement. Find the greater angle.

- A 30°
- B 60°
- C 50
- D 75°

Answer: C

Explanation:

complementary angles have a sum of 90

let

$$A + B = 90$$

Now if $A = x$ then $B = x + 10$

$$\text{so } x + x + 10 = 90$$

$$2x = 80$$

$$x = 40$$

so the greater angle is $40 + 10 = 50$

option C is the answer

Question 14

Neelam and Manisha starting from the same place run at a rate of 7 kmph and 9 kmph respectively. What time will they take to be 12 km apart, If they walk in the same direction?

- A 3 hours
- B 6 hours

C 12 hours

D 9 hours

Answer: B

Explanation:

Let they will take t hrs to be 12 km apart

Distance travelled by manish = $7t$ KM

Distance travelled by neelam = $9t$ km

$$9t - 7t = 12$$

$$2t = 12$$

$$t = 6 \text{ hrs}$$

Question 15

Delhi metro covers a distance in 40 minutes, if it runs at a speed of 48 kmph on an average. Find the speed at which the train must run to reduce the time of journey to 32 minutes:

A 60kmph

B 50kmph

C 70kmph

D 80kmph

Answer: A

Explanation:

Distance travelled by metro in 40 min = $48 \times \frac{40}{60}$ km

Now Required Speed = $\frac{\text{distance}}{\text{time}}$

$$= \frac{48 \times \frac{40}{60}}{\frac{32}{60}} = \frac{48 \times 40}{32} = 60 \text{ km/hr}$$

Question 16

The mean of a distribution is 13 and the standard deviation is 7. What is the value of the coefficient variation?

A 50%

B 76.77%

C 53.85%

D 38.88%

Answer: C

Question 17

A car stops on applying brakes mainly due to force.

A Gravitational

- B Centripetal
- C Frictional
- D Centrifugal

Answer: C

Question 18

Statements followed by some conclusions are given below.

Statements:

1. Knowledge is not a skill. It is learning and experience.
2. The illiterate are not those who cannot read and write but those who cannot learn.

Conclusions:

- I. Those who cannot read and write are literate.
- II. Knowledge and skill are two different things.

Find which of the given conclusions logically follows from the given statements.

- A Only conclusion I follows.
- B Only conclusion II follows.
- C Both I and II follow.
- D Neither I nor II follows.

Answer: B

Explanation:

Conclusion

1. Those who cannot read and write are literate.

In statement it is given that, those who cannot learn are illiterate, but it is not mentioned as those who cannot read and write are literate or illiterate. so this conclusion does not follow

2. Knowledge and skill are two different things.

It is given that Knowledge is not a skill. thus knowledge and skill are two different things.

Thus the conclusion follows

Question 19

Statements followed by some conclusions are given below.

Statements:

1. Depleting natural resources is a major concern in our country.
2. Unless we go for renewable energy sources in a big way, increase in population being a heavy burden on the energy resources, will reduce the quality of life.

Conclusions:

- I. Depleting resources impacts quality of life.
- II. Use of renewable energy sources is a solution to counter increase in population.

Find which of the given conclusions logically follows from the given statements.

- A Only conclusion I follows.
- B Only conclusion II follows.
- C Both I and II follow.
- D Neither I nor II follows.

Answer: C

Explanation:

1. Depleting natural resources is a major concern in our country.
 2. Unless we go for renewable energy sources in a big way, increase in population being a heavy burden on the energy resources. will reduce the quality of life.
- The usage of renewable resources does not have any effect on the increasing population. Hence the correct answer is option 1 only

Question 20

Quartz used in clocks is

- A Nitrogen silicate
- B Silicon dioxide
- C Sodium silicate
- D Calcium silicate

Answer: B

Question 21

The head of the state in India is the

- A Prime Minister
- B President
- C Parliament
- D Chief Justice of India

Answer: B

Question 22

Name the type of government in Bangladesh.

- A Islamic Republic
- B Parliamentary Democracy
- C Federal Republic
- D Constitutional Monarchy

Answer: B

Question 23

Which pair is not exactly similar to the other three pairs?

- A Principal : School
- B Pages : Note book
- C Letters : Word

D Students : Class

Answer: A

Explanation:

Students make Class, page make notebook , letters make word

But only principal not make school.

Question 24

Which Indian state shares its borders with the maximum number of other Indian states?

A Manipur

B West Bengal

C Uttar Pradesh

D Uttarakhand

Answer: C

Question 25

..... does not refer to the game of playing card.

A Bridge

B Blackjack

C Squash

D Solitaire

Answer: C

Question 26

..... was appointed as one of the Goodwill Ambassadors by UNDP in March 2016.

A Ashley Judd

B Michelle Yeoh

C Merrick Garland

D Hillary Clinton

Answer: B

Question 27

..... is the process of absorption of moisture from air.

A Deliquescence

B Capillary action

C Absorption

D Osmosis

Answer: A

Question 28

The process of optimizing fat content in milk is called

A Vitamin fortification

B Pasteurization

C Standardization

D Homogenization

Answer: C

Question 29

Bird : Wings : : Fish : ?

A Gills

B Head

C Fins

D Legs

Answer: C

Explanation:

Bird has Wings

Fish has Fins

Question 30

An assertion (A) and a reason (R) are given below.

Assertion (A): Perennial rivers mostly originate from the Himalayas.

Reason (R): The fountains in the Himalayas feed the rivers.

Choose the correct option.

A Both A and R are true and R is the correct explanation of A

B Both A and R are true, but R is not the correct explanation of A

C A is true, but R is false

D A is false, but R is true

Answer: C

Explanation:

Assertion is correct because river originate from himalayas are Perennial in nature but it is the melting glacier that feed the river

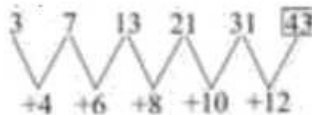
Question 31

Find the missing (?) in the series 3, 7, 13, 21, 31, ?

- A 41
- B 42
- C 43
- D 44

Answer: C

Explanation:



Question 32

Which state has the second highest number of seats in the Lok Sabha?

- A Uttar Pradesh
- B Maharashtra
- C West Bengal
- D Bihar

Answer: B

Explanation:

Uttar pradesh has the highest number of seats in lok sabha i.e 80 followed by Maharashtra, West Bengal and Bihar with 48, 42, and 40 seats respectively

Question 33

If TABLE = RYZJC, then CHAIR =

- A AFZHQ
- B AFYGP
- C FAGYP
- D ZFAHQ

Answer: B

Explanation:



Question 34

Find the odd pair out.

- A Nitrogen & oxygen : Air
- B Sulphur & Phosphorous : Match stick
- C Hydrogen & Oxygen : Water
- D Magnesium & Silver : Stainless steel

Answer: D

Explanation:

In the given option constituent of an element is given. Air is composed of nitrogen and oxygen . Match stick is made up of phosphorous and sulphur. Water is made up of hydrogen and oxygen. Stainless steel is a metal alloy, made up of steel mixed with elements such as chromium, nickel, molybdenum, silicon, aluminum, and carbon. Iron mixed with carbon to produce steel is the main component of stainless steel. Chromium is added to make it resistant to rust.

Question 35

..... was the first Geographical Indication (GI) tagged product in India.

- A Darjeeling Tea
- B Solapuri Chaddar
- C Nagpur Orange
- D Orissa Ikat

Answer: A

Question 36

Freezing point of water is

- A 40° F
- B 42° F
- C 34° F
- D 32° F

Answer: D

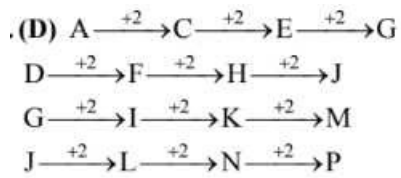
Question 37

ADGJ, CFIL, EHKN,

- A FILO
- B HKNQ
- C DGJM
- D GJMP

Answer: D

Explanation:



Question 38

If the rate of interest is 8% per annum and Rs. 10000 lent at the compound interest half yearly then calculate the equivalent simple rate of interest for the first year?

A 8.16%

B 9%

C 7%

D 10%

Answer: A

Explanation:

Given $R=8\%$ $pa=4\%$ half yearly

$T=1$ yr $=2$ (half years)

$P=10,000$

$$C.I = P \left(1 + \frac{R}{100} \right)^n - P$$

$$= 10,000 \left[\left(1 + \frac{4}{100} \right)^2 - 1 \right]$$

$$= 10,000 \times \frac{51}{625} = 816$$

Now $P=10,000$ S.I $=816$

$T=1$ yr $R=?$

$$R = \frac{S.I \times 100}{P \times T} = \frac{816 \times 100}{10000 \times 1}$$

$$= \frac{816}{100} = 8.16\%$$

Question 39

'.docx' file is created with

A Spreadsheet

B Powerpoint

C Word processor

D Paint

Answer: C

Question 40

Evaluate $(35/2)\%$ of 800gm $- (45/2)\%$ of 400gm

A 50 gm

B 150 gm

C 100 gm

D 80 gm

Answer: A

Explanation:

$$\begin{aligned} & \frac{35}{2} \% \text{ of } 800g - \frac{45}{2} \% \text{ of } 400g \\ & = \frac{35}{2} \times \frac{1}{100} \times 800 - \frac{45}{2} \times \frac{1}{100} \times 400 \\ & = 140 - 90 = 50g \end{aligned}$$

Question 41

12 men finished $\frac{1}{4}$ part of whole work in 6 days. Find the number of additional men required to complete the job in next 6 days.

A 36

B 12

C 18

D 24

Answer: D

Explanation:

$$M_1 = 12, D_1 = 6, W_1 = \frac{1}{4}$$

$$M_2 = ?, D_2 = 6, W_2 = 1 - \frac{1}{4} = \frac{3}{4}$$

We have

$$\frac{M_1 D_1}{W_1} = \frac{M_2 D_2}{W_2}$$

$$\frac{1}{2} \times 6 = \frac{M_2 \times 6}{4}$$

$$M_2 = 36$$

Hence No. of additional men required = $36 - 12 = 24$

Question 42

B is the brother of C, D is the sister of B. F is the sister of E who is the son of C. K is the husband of C. How is D related to F ?

A Maternal Aunt

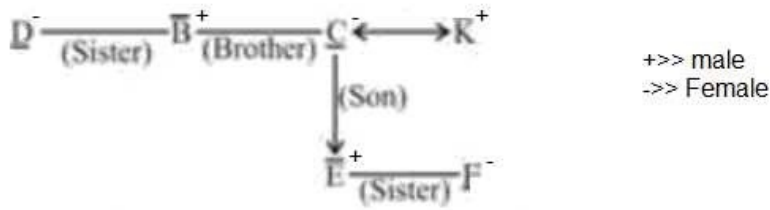
B Mother

C Sister

D Niece

Answer: A

Explanation:



Question 43

..... does not belong to the twelve zodiac signs.

- A Ophiuchus
- B Aquarius
- C Libra
- D Pisces

Answer: A

Explanation:

Ophiuchus does not belong to the twelve zodiac signs

Question 44

Rearrange the jumbled letters to make meaningful words and then select the one which is different.

- A ENIMSAJ
- B DLOGIRAM
- C TORRAC
- D REWOLFNUUS

Answer: C

Explanation:

ENIMSAJ -> JASMINE

DLOGIRAM -> MARIGOLD

TORRAC -> CARROT

REWOLFNUUS -> SUNFLOWER

Question 45

Taxonomy is basically related to

- A Biodiversity
- B Tax structure
- C A branch of astronomy
- D Study of human behaviour

Answer: A

Question 46

Ramesh purchased a memory card at a price of Rs. 625 including the sales tax. The rate of sales tax is 25%. If the seller has made a gain of 50%, then the cost price of the memory card is :

- A Rs. 333
- B Rs. 312
- C Rs. 350
- D Rs. 360

Answer: A

Explanation:

given,

selling price with tax = 625

Let the cost price of memory card be x

Profit = 50%

50% of $x = \frac{x}{2}$

Sales tax = 25% of selling price = $\frac{1}{4}$ of $(x + \frac{x}{2}) = \frac{3x}{8}$

we know,

selling price = profit + cost price + sales tax

$625 = \frac{x}{2} + x + \frac{3x}{8}$, solving this we get,

therefore $x = 333.33$

so the cost price of the memory card is Rs 333 approx

hence option A is correct

Question 47

The shadow of a standing tower of height $25\sqrt{3}$ m is found to be 50 m longer when the sun's elevation changes from 60° to X° . Find the measure of X ?

- A 45°
- B 30°
- C 75°
- D 90°

Answer: B

Question 48

30 persons can finish a job in 20 days. After 6 days how many persons should leave the job so that work is completed in a total of 26 days?

- A 9

- B 12
- C 8
- D 7

Answer: A

Question 49

An investor invested $\frac{1}{2}$ of his capital at 5%, $\frac{1}{4}$ at 10% and rest at 8%. If his income after 2 years is Rs. 2800, find the capital amount.

- A Rs. 10000
- B Rs. 15000
- C Rs. 20000
- D RS. 12000

Answer: C

Question 50

The distance between the two poles of length 16 m and 9 m, is X m. If two angles of elevation of their respective top from the bottom of the other are complementary to each other then the value X is

- A 10m
- B 15m
- C 16m
- D 12m

Answer: D

Question 51

..... is not a constituent of tooth paste.

- A Abrasive
- B Fluoride
- C Lubricant
- D Surfactant

Answer: C

Instructions

Consider the following information and answer questions based on it.

Suresh is taller than Ramesh who is shorter than Rakesh. Jinesh is taller than the shortest person but shorter than Rakesh. Pritesh is taller than Suresh but shorter than Jinesh.

Question 52

Who is the shortest?

A Rakesh

B Ramesh

C Pritesh

D Suresh

Answer: B

Question 53

If Jayesh who is taller than Suresh joins the group. who will be fourth. if they are arranged in a descending order?

A Jayesh

B Jinesh

C Pritesh

D Cannot be determined

Answer: D

Question 54

Which statement, among the following, is correct?

A Suresh is taller than Jinesh.

B Pritesh is shorter than Rakesh.

C Jinesh is taller than Rakesh.

D Ramesh is taller than Pritesh.

Answer: B

Instructions

For the following questions answer them individually

Question 55

If VOTER = 41352, HEATER = 743654, TEASER = 645834 , which number represents S?

A 1

B 5

C 8

D 7

Answer: C

Question 56

Pointing to a man. a woman said "he is the brother of the daughter of my husband's wife". What is the woman to the man?

- A Son
- B Mother
- C Father
- D Sister

Answer: B

Question 57

Triangle PQR is such that $PR=7.5$ cm and triangle PQR is similar to triangle XYZ. if $XY=18$ and $YZ=12$ cm then find the ratio of PQ:QR

- A 1:2
- B 3:2
- C 4:5
- D 5:2

Answer: B

Question 58

The planet Pluto was discovered in the year...

- A 1925
- B 1930
- C 1935
- D 1940

Answer: B

Question 59

Two numbers are in the ratio 3:5. If each number is increased by 10, the ratio becomes 5:7. The smaller number is :

- A 8
- B 12
- C 15
- D 18

Answer: C

Question 60

In 1955,..... was renamed as State Bank of India.

- A Bank of Bengal
- B Bank of Bombay

- C Bank of Madras
- D Imperial Bank of India

Answer: D

Question 61

Two vessels contain milk and water in the ratio 2:3 and 7:3. Find the ratio in which the contents of the two vessels have to be mixed so that the ratio of milk and water in the new mixture is equal.

- A 2:1
- B 1:2
- C 3:2
- D 2:3

Answer: A

Question 62

Find the value of $335 \times 335 - 165 \times 165$?

- A 20000
- B 85000
- C 85500
- D 27500

Answer: B

Question 63

Which one is not generally used as a fruit?

- A Strawberry
- B Grapes
- C Pear
- D Tomato

Answer: D

Question 64

'Make in India Week' was launched in..... from 13th to 18th February 2016.

- A Bhubaneswar
- B Udaipur
- C Mysuru

D Mumbai

Answer: D

Question 65

If Chennai : Tamil Nadu, then.....Jharkhand

A Raipur

B Ranchi

C Dhanbad

D Durgapur

Answer: B

Question 66

Read the given statements carefully and answer the question.

Most people get their own cars to office. The number of vehicles on road is increasing day by day. It leads to traffic congestion and adds to the ever-increasing air pollution issues. As a result, respiratory problems are on a rise. People should, as far as possible, take public transport or do carpooling.

Which of the following situations better fits the above statement?

A People are becoming rich day by day and hence buying more cars.

B People can go to the shopping malls in cars but not to office.

C Respiratory problems doesn't affect the people who use public transport.

D More number of vehicles on road leads to traffic congestion.

Answer: D

Question 67

The famous forbidden city is in

A France

B Italy

C China

D USA

Answer: C

Question 68

Rate of heat conduction in solids does not depend on

A Density of the material

- B Dimensions of the material
- C Friction
- D Electronic configuration

Answer: C

Question 69

As per tiger census of 2014, tiger population in India was estimated at

- A 1411
- B 1706
- C 2226
- D 1906

Answer: C

Question 70

..... was the theme for World Wetland Day in 2016.

- A Sustainable Livelihoods
- B Wetlands take care of water
- C Wetlands for our future
- D Wetlands and Agriculture

Answer: A

Question 71

K and L are brother and sister. M is the father of K. N and O are brothers. L is the mother of O. How is K related to N?

- A Maternal Uncle
- B Brother
- C Nephew
- D Cannot be determined

Answer: A

Question 72

..... is used in refrigeration.

- A Chlorofluorocarbon
- B Carbon dioxide
- C Nitrogen peroxide

D Ammonium oxide

Answer: A

Question 73

If $(x^2 + 1/x^2) = 6$, then find the value of $(10x - 10/x)$

A +/- 15

B +/- 20

C +/- 30

D +/- 40

Answer: B

Question 74

Halley's comet is expected to return to the vicinity of earth in the year...

A 2086

B 2061

C 2041

D 2026

Answer: B

Question 75

Asymmetric Digital Subscriber Line (ADSL) is technology.

A a wireless data communication

B a wired data communication

C amateur radio communication

D satellite communication

Answer: B

Question 76

Who was appointed as the Defense Minister when the 16th Lok Sabha was formed in 2014?

A Venkaiah Naidu

B Ravi Shankar Prasad

C Manohar Parikkar

D Suresh Prabhu

Answer: C

Question 77

If ' \div ' means '+', '+' means ' \div ', and '-' means ' \times ', then $25 \div 25 + 5 \div 2 - 15 = ?$

- A 0
- B -12
- C 60
- D 45

Answer: C

Question 78

If SMART = 31524, MARBLE = 428376 and EAT = 537. then STABLE =?

- A 618537
- B 253678
- C 453678
- D 243678

Answer: A

Question 79

Choose the odd one out

- A Optical disc
- B Magnetic Storage
- C Solid State Drive
- D Petabyte

Answer: D

Question 80

Which one is not true with 'backup'?

- A Exact copy of computer files.
- B It is part of business continuity plan.
- C PCs do not require regular back up.
- D Offsite and on-site backup are more beneficial.

Answer: C

Question 81

If the standard deviation of a population is 9.5 what would be the population variance?

- A 19
- B 90.25
- C 81.25
- D 93.25

Answer: B

Question 82

Find the largest 6 digit number which is completely divided by 71?

- A 999965
- B 999954
- C 999964
- D 999974

Answer: C

Question 83

The first, all women two wheeler public transportation service in India was started in

- A Gurgaon
- B Noida
- C Chennai
- D Bengaluru

Answer: A

Question 84

If $(a - 1/a) = 3/4$, Find the value of $(a^3 - 1/a^3)$.

- A $164/31$
- B $171/64$
- C $171/32$
- D $164/37$

Answer: B

Question 85

Find the greatest number which on dividing 3050 and 5200 leaves remainders 7 and 9 respectively.

- A 149
- B 111
- C 153
- D 179

Answer: D

Instructions

Consider the table and answer questions based on it.

The following table represents the human resource profile of a global company.

Country	No.of offices	Male		Female		Total
		Class I	Class II	Class I	Class II	
US	20	150	50	70	35	305
UK	15	115	40	65	20	240
India	10	125	25	45	90	285
Canada	10	80	30	50	10	170

Question 86

The percentage of male employees in India to the total number of employees of the company is

- A 11%
- B 15.5%
- C 15%
- D 20%

Answer: C

Question 87

Total number of employees in the company is

- A 950
- B 960
- C 995
- D 1000

Answer: D

Question 88

The ratio of female employees of US to Canada is

- A 4 : 7
- B 7 : 4

C 21 : 17

D 21 : 29

Answer: B

Instructions

For the following questions answer them individually

Question 89

The period of Dominion of India refers to

A Pre-partition day

B Pre-Independence day

C Post Republic day

D Independence day to Republic day

Answer: D

Question 90

Who won the man of the match award in the 2016 Asia Cup T20 held in Bangladesh?

A Bhuvaneshwar Kumar

B Virat Kohli

C Shikhar Dhawan

D R Ashwin

Answer: C

Explanation:

Shikhar Dhawan won the man of the match title as he, made 60 runs in 44 balls for this match, as this was the 2016 T20 finals held at sher-e-bangal stadium located in bangladesh where India won the final by 8 wickets against bangladesh

Question 91

What is the average of first 25 multiples of 11?

A 152

B 147

C 143

D 134

Answer: C

Question 92

If $2x(x + y + z) = 250$, $2y(x + y + z) = 100$, $2z(x + y + z) = 100$, then find the value of $(3x + 6y + 15z)$.

- A 110
- B 95
- C 85
- D 69

Answer: B

Explanation:

$$2x(x + y + z) = 250 \text{---- (1)}$$

$$2y(x + y + z) = 100 \text{---- (2)}$$

$$2z(x + y + z) = 100 \text{---- (3)}$$

Adding equation (1), (2) and (3)

$$\Rightarrow (2x + 2y + 2z)(x + y + z) = 450$$

$$\Rightarrow (x + y + z)(x + y + z) = 225$$

$$\Rightarrow (x + y + z) = 15$$

$$\Rightarrow x = 25/3, y = 10/3 \text{ and } z = 10/3$$

$$\therefore (3x + 6y + 15z) = 95$$

Question 93

Kakori train robbery took place in the year

- A 1923
- B 1924
- C 1925
- D 1926

Answer: C

Question 94

By selling an article for Rs. 979, a shopkeeper bears a loss of 11%. If shopkeeper sells that article for Rs. 1232, then the profit % is :

- A 12%
- B 21%
- C 11%
- D 14%

Answer: A

Question 95

The HCF and LCM of two numbers are 45 and 270 respectively. If the ratio of the two numbers is 2:3 and smaller of the two numbers is X, then find X^2

- A 2025
- B 4225
- C 8100
- D 18225

Answer: C

Explanation:

Let two numbers are $2x$ and $3x$

$$2x \times 3x = LCM \times HCF$$

$$2x \times 3x = 270 \times 45$$

$$6x^2 = 270 \times 45$$

$$x^2 = 2025$$

$$x = 45$$

Smaller no. $\times (2x) = 90$

$$X^2 = 8100$$

Question 96

Inflammation of the mucous membrane is called

- A Bronchitis
- B Hepatitis
- C Iritis
- D Gastritis

Answer: A

Instructions

Consider the following information and answer the questions based on it.

Out of 200 kids, 20 wanted to see only the galaxy, 25 wanted to see only stars, 30 wanted to see only planets, 50 wanted to see stars, planets and moon, 25 wanted to see both moon and galaxy, 25 wanted to see only moon and the remaining did not want to see anything.

Question 97

In all, how many kids did not want to see the galaxy?

- A 130
- B 100
- C 155
- D 125

Answer: C

Explanation:

Total Kids = 200

20 wanted to see only galaxy & 25 wanted to see both moon and galaxy

So required answer= $200-(20+25)=155$

Question 98

In all, how many kids wanted to see the moon?

- A 50
- B 75
- C 100
- D 120

Answer: C

Explanation:

50 wanted to see stars, planets and moon, 25 wanted to see both moon and galaxy, 25 wanted to see only moon

so required ans= $50+25+25=100$

Question 99

How many kids wanted to see at least 2 objects?

- A 50
- B 25
- C 75
- D 55

Answer: C

Instructions

For the following questions answer them individually

Question 100

Manish purchased mobile phone and got 50% concession on the marked price of the phone and sold it for Rs. 8100 with 35% profit on the price he bought. What was the marked price?

- A Rs. 8000
- B Rs. 12000
- C Rs. 10000
- D Rs. 9000

Answer: B

Explanation:

Given

selling price of mobile=8100

a gain on mobile=35%

so,

cost price of mobile



Latest Sarkari jobs, Govt Exam alerts, Results and Vacancies

- ▶ Latest News and Notification
- ▶ Exam Paper Analysis
- ▶ Topic-wise weightage
- ▶ Previous Year Papers with Answer Key
- ▶ Preparation Strategy & Subject-wise Books

To know more [Click Here](#)



www.prepp.in