

Telangana State Council Higher Education

Notations :

- 1.Options shown in **green** color and with **✓** icon are correct.
- 2.Options shown in **red** color and with **✗** icon are incorrect.

Question Paper Name :	Pharmacy 3rd Aug 2021 Shift2
Subject Name :	Pharmacy
Creation Date :	2021-08-03 18:35:34
Duration :	180
Total Marks :	200
Display Marks:	No
Calculator :	None
Magnifying Glass Required? :	No
Ruler Required? :	No
Eraser Required? :	No
Scratch Pad Required? :	No
Rough Sketch/Notepad Required? :	No
Protractor Required? :	No
Show Watermark on Console? :	Yes
Highlighter :	No
Auto Save on Console? :	Yes

Pharmacy

Group Number :	1
Group Id :	800894118
Group Maximum Duration :	0

Group Minimum Duration :	180
Show Attended Group? :	No
Edit Attended Group? :	No
Break time :	0
Group Marks :	200
Is this Group for Examiner? :	No

Pharmaceutics

Section Id :	800894458
Section Number :	1
Section type :	Online
Mandatory or Optional :	Mandatory
Number of Questions :	50
Number of Questions to be attempted :	50
Section Marks :	50
Enable Mark as Answered Mark for Review and Clear Response :	Yes
Sub-Section Number :	1
Sub-Section Id :	800894524
Question Shuffling Allowed :	Yes

Question Number : 1 Question Id : 80089423456 Question Type : MCQ Option Shuffling : Yes
Display Question Number : Yes Is Question Mandatory : No Option Orientation : Vertical
Correct Marks : 1 Wrong Marks : 0

Which of the following is Solids in Liquid type biphasic liquid dosage forms?

Options :

1. ✖ Syrups

2. ✘ Emulsions

3. ✔ Suspensions

4. ✘ Solutions

Question Number : 2 Question Id : 80089423457 Question Type : MCQ Option Shuffling : Yes

Display Question Number : Yes Is Question Mandatory : No Option Orientation : Vertical

Correct Marks : 1 Wrong Marks : 0

When was the latest Indian Pharmacopeia released by Indian Pharmacopeia Commission?

Options :

1. ✘ 2015

2. ✔ 2018

3. ✘ 2020

4. ✘ 2021

Question Number : 3 Question Id : 80089423458 Question Type : MCQ Option Shuffling : Yes

Display Question Number : Yes Is Question Mandatory : No Option Orientation : Vertical

Correct Marks : 1 Wrong Marks : 0

One Kilogram is equal to _____ lbs

Options :

1. ✘ 3.1 lb

2. ✔ 2.2 lb

3. ✘ 2.5 lb

4. ✘ 1.8 lb

Question Number : 4 Question Id : 80089423459 Question Type : MCQ Option Shuffling : Yes Display Question Number : Yes Is Question Mandatory : No Option Orientation : Vertical Correct Marks : 1 Wrong Marks : 0

Which of the following is not used for parenteral products?

Options :

1. ✘ Natural Glass

2. ✔ Amber coloured glass

3. ✘ PVC Sachets

4. ✘ Polypropylene Sachets

Question Number : 5 Question Id : 80089423460 Question Type : MCQ Option Shuffling : Yes Display Question Number : Yes Is Question Mandatory : No Option Orientation : Vertical Correct Marks : 1 Wrong Marks : 0

The working principle of Fluid Energy Mill is _____

Options :

1. ✘ Rotation

2. ✘ Fluidization

3. ✘ Stress

4. ✔ Impact and Attrition

Question Number : 6 Question Id : 80089423461 Question Type : MCQ Option Shuffling : Yes

Display Question Number : Yes Is Question Mandatory : No Option Orientation : Vertical

Correct Marks : 1 Wrong Marks : 0

The powder which passes through sieve No 120 is called as _____

Options :

1. ✘ Coarse powder

2. ✘ Moderately coarse powder

3. ✘ Moderately fine powder

4. ✔ Very fine powder

Question Number : 7 Question Id : 80089423462 Question Type : MCQ Option Shuffling : Yes

Display Question Number : Yes Is Question Mandatory : No Option Orientation : Vertical

Correct Marks : 1 Wrong Marks : 0

Which of the following is example of heterogeneous mixing ?

Options :

1. ✔ Suspensions

2. ✘ Solutions

3. ✘ Syrups

4. ✘ Eye drops

Question Number : 8 Question Id : 80089423463 Question Type : MCQ Option Shuffling : Yes

Display Question Number : Yes Is Question Mandatory : No Option Orientation : Vertical

Correct Marks : 1 Wrong Marks : 0

Ultrasonic emulsifiers are used for _____

Options :

1. ✘ Size separation

2. ✘ Size reduction

3. ✔ Homogenization

4. ✘ Filtration

Question Number : 9 Question Id : 80089423464 Question Type : MCQ Option Shuffling : Yes

Display Question Number : Yes Is Question Mandatory : No Option Orientation : Vertical

Correct Marks : 1 Wrong Marks : 0

Which filter medium imparts alkalinity to the filtrate?

Options :

1. ✔ Asbestos

2. ✘ Cotton wool

3. ✘ Glass wool

4. ✘ Nylon cloth

Question Number : 10 Question Id : 80089423465 Question Type : MCQ Option Shuffling : Yes

Display Question Number : Yes Is Question Mandatory : No Option Orientation : Vertical

Correct Marks : 1 Wrong Marks : 0

Which process is used to extract water soluble and heat stable constituents within 10-15 min from hard and woody crude drugs?

Options :

1. ✔ Decoction

2. ✘ Infusion

3. ✘ Maceration

4. ✘ Percolation

Question Number : 11 Question Id : 80089423466 Question Type : MCQ Option Shuffling : Yes

Display Question Number : Yes Is Question Mandatory : No Option Orientation : Vertical

Correct Marks : 1 Wrong Marks : 0

What is the relation between evaporation and atmospheric aqueous pressure?

Options :

1. ✔ Inversely proportional

2. ✘ Directly proportional

3. ✘ No relation

4. ✘ Neutral

Question Number : 12 Question Id : 80089423467 Question Type : MCQ Option Shuffling : Yes

Display Question Number : Yes Is Question Mandatory : No Option Orientation : Vertical

Correct Marks : 1 Wrong Marks : 0

What is the principle of fractional distillation for separation of two miscible volatile liquids?

Options :

1. ✘ Having different melting point
2. ✔ Having different boiling point
3. ✘ Having different molecular weight
4. ✘ Having different pressures

Question Number : 13 Question Id : 80089423468 Question Type : MCQ Option Shuffling : Yes

Display Question Number : Yes Is Question Mandatory : No Option Orientation : Vertical

Correct Marks : 1 Wrong Marks : 0

Vacuum distillation of a liquid is conducted at a temperature _____ its boiling point.

Options :

1. ✘ Equal to
2. ✘ More than
3. ✔ Lower than

4. ✘ Double to

Question Number : 14 Question Id : 80089423469 Question Type : MCQ Option Shuffling : Yes

Display Question Number : Yes Is Question Mandatory : No Option Orientation : Vertical

Correct Marks : 1 Wrong Marks : 0

Which dryer is used for drying of thermolabile substances?

Options :

1. ✘ Fluidised bed dryer

2. ✘ Rotary dryer

3. ✘ Tunnel dryer

4. ✔ Vacuum dryer

Question Number : 15 Question Id : 80089423470 Question Type : MCQ Option Shuffling : Yes

Display Question Number : Yes Is Question Mandatory : No Option Orientation : Vertical

Correct Marks : 1 Wrong Marks : 0

Which equipment is used for Moist heat sterilization?

Options :

1. ✘ Hot air oven

2. ✔ Autoclave

3. ✘ Sonicator

4. ✘ Refrigerator

Question Number : 16 Question Id : 80089423471 Question Type : MCQ Option Shuffling : Yes

Display Question Number : Yes Is Question Mandatory : No Option Orientation : Vertical

Correct Marks : 1 Wrong Marks : 0

What is the other name for moist heat sterilization?

Options :

1. ✘ Hot air sterilization
2. ✘ Flaming
3. ✔ Steam sterilization
4. ✘ Radiation

Question Number : 17 Question Id : 80089423472 Question Type : MCQ Option Shuffling : Yes

Display Question Number : Yes Is Question Mandatory : No Option Orientation : Vertical

Correct Marks : 1 Wrong Marks : 0

Which of the following is an example of live vaccine?

Options :

1. ✘ Influenza
2. ✘ Pertussis
3. ✘ Vorticella
4. ✔ Measles

Question Number : 18 Question Id : 80089423473 Question Type : MCQ Option Shuffling : Yes

Display Question Number : Yes Is Question Mandatory : No Option Orientation : Vertical

Correct Marks : 1 Wrong Marks : 0

The prepared solutions of which tablets are injected?

Options :

1. ✘ Dispensing Tablets

2. ✔ Hypodermic Tablets

3. ✘ Chewable Tablets

4. ✘ Lozenges Tablets

Question Number : 19 Question Id : 80089423474 Question Type : MCQ Option Shuffling : Yes

Display Question Number : Yes Is Question Mandatory : No Option Orientation : Vertical

Correct Marks : 1 Wrong Marks : 0

Which polymer is used for enteric coating of tablets?

Options :

1. ✘ Poly Ethylene Glycol

2. ✘ Carbopol

3. ✘ Ethyl Cellulose

4. ✔ Cellulose Acetate Phthalate

Question Number : 20 Question Id : 80089423475 Question Type : MCQ Option Shuffling : Yes

Display Question Number : Yes Is Question Mandatory : No Option Orientation : Vertical

Correct Marks : 1 Wrong Marks : 0

Which is the smallest size of the capsules?

Options :

1. ✘ 000

2. ✘ 00

3. ✘ 2

4. ✔ 5

Question Number : 21 Question Id : 80089423476 Question Type : MCQ Option Shuffling : Yes

Display Question Number : Yes Is Question Mandatory : No Option Orientation : Vertical

Correct Marks : 1 Wrong Marks : 0

What is the English term for 'bid (bis in die)' ?

Options :

1. ✘ Before meals

2. ✔ Twice a day

3. ✘ Thrice a day

4. ✘ At bed time

Question Number : 22 Question Id : 80089423477 Question Type : MCQ Option Shuffling : Yes

Display Question Number : Yes Is Question Mandatory : No Option Orientation : Vertical

Correct Marks : 1 Wrong Marks : 0

Which type of incompatibility noticed in salicylates with ferric salts?

Options :

1. ✓ Chemical incompatibility
2. ✗ Physical incompatibility
3. ✗ Therapeutic incompatibility
4. ✗ Complexing

Question Number : 23 Question Id : 80089423478 Question Type : MCQ Option Shuffling : Yes

Display Question Number : Yes Is Question Mandatory : No Option Orientation : Vertical

Correct Marks : 1 Wrong Marks : 0

Which branch of pharmacy deals with drug doses?

Options :

1. ✗ Pharmacology
2. ✗ Dosology
3. ✓ Posology
4. ✗ Rheology

Question Number : 24 Question Id : 80089423479 Question Type : MCQ Option Shuffling : Yes

Display Question Number : Yes Is Question Mandatory : No Option Orientation : Vertical

Correct Marks : 1 Wrong Marks : 0

Which is finely divided solid dosage medicaments, inhaled into nostrils for their antiseptic or bronchodilator action ?

Options :

1. ✘ Cachets
2. ✘ Ear drops
3. ✘ Insufflations
4. ✔ Sniffs

Question Number : 25 Question Id : 80089423480 Question Type : MCQ Option Shuffling : Yes

Display Question Number : Yes Is Question Mandatory : No Option Orientation : Vertical

Correct Marks : 1 Wrong Marks : 0

Which crystalline powder that contains water of hydration or crystallization?

Options :

1. ✘ Dusting powder
2. ✘ Effervescent powder
3. ✔ Efflorescent powder
4. ✘ Compound powder

Question Number : 26 Question Id : 80089423481 Question Type : MCQ Option Shuffling : Yes

Display Question Number : Yes Is Question Mandatory : No Option Orientation : Vertical

Correct Marks : 1 Wrong Marks : 0

Which are called potent drugs?

Options :

1. ✓ Dose less than one grain
2. ✗ Dose more than one grain
3. ✗ Dose less than one gram
4. ✗ Dose more than one gram

Question Number : 27 Question Id : 80089423482 Question Type : MCQ Option Shuffling : Yes

Display Question Number : Yes Is Question Mandatory : No Option Orientation : Vertical

Correct Marks : 1 Wrong Marks : 0

Which Liquid dosage form is used to treat throat infections?

Options :

1. ✗ Liniments
2. ✗ Creams
3. ✗ Lotions
4. ✓ Gargles

Question Number : 28 Question Id : 80089423483 Question Type : MCQ Option Shuffling : Yes

Display Question Number : Yes Is Question Mandatory : No Option Orientation : Vertical

Correct Marks : 1 Wrong Marks : 0

What is the purpose of Bentonite in lotions?

Options :

1. ✘ Astringent
2. ✘ Protecting agent
3. ✘ Adjuvant
4. ✔ Suspending agent

Question Number : 29 Question Id : 80089423484 Question Type : MCQ Option Shuffling : Yes

Display Question Number : Yes Is Question Mandatory : No Option Orientation : Vertical

Correct Marks : 1 Wrong Marks : 0

Which Monophasic liquids are externally applied by rubbing on affected area?

Options :

1. ✘ Lotions
2. ✘ Mixtures
3. ✘ Syrups
4. ✔ Liniments

Question Number : 30 Question Id : 80089423485 Question Type : MCQ Option Shuffling : Yes

Display Question Number : Yes Is Question Mandatory : No Option Orientation : Vertical

Correct Marks : 1 Wrong Marks : 0

What is the purpose of liquefied phenol in lotions?

Options :

1. ✓ Antiseptic
2. ✗ Humectant
3. ✗ Viscosity agent
4. ✗ Cooling agent

**Question Number : 31 Question Id : 80089423486 Question Type : MCQ Option Shuffling : Yes
Display Question Number : Yes Is Question Mandatory : No Option Orientation : Vertical
Correct Marks : 1 Wrong Marks : 0**

Which agents are used for increasing the Viscosity of the suspension?

Options :

1. ✗ Flocculating agents
2. ✓ Thickening agents
3. ✗ Suspending agents
4. ✗ Surfactant

**Question Number : 32 Question Id : 80089423487 Question Type : MCQ Option Shuffling : Yes
Display Question Number : Yes Is Question Mandatory : No Option Orientation : Vertical
Correct Marks : 1 Wrong Marks : 0**

Which is the indiffusible solid?

Options :

1. ✘ Rhubarb powder
2. ✘ Light Kaolin
3. ✘ Magnesium Trisilicate
4. ✔ Aspirin

**Question Number : 33 Question Id : 80089423488 Question Type : MCQ Option Shuffling : Yes
Display Question Number : Yes Is Question Mandatory : No Option Orientation : Vertical
Correct Marks : 1 Wrong Marks : 0**

Which test is used to identify the type of emulsion?

Options :

1. ✘ Clarity test
2. ✘ Sterility test
3. ✔ Dilution test
4. ✘ Melting test

**Question Number : 34 Question Id : 80089423489 Question Type : MCQ Option Shuffling : Yes
Display Question Number : Yes Is Question Mandatory : No Option Orientation : Vertical
Correct Marks : 1 Wrong Marks : 0**

Irish moss is used as _____

Options :

1. ✘ Suspending agent
2. ✔ Emulsifying agent
3. ✘ Surfactant
4. ✘ Suppository base

**Question Number : 35 Question Id : 80089423490 Question Type : MCQ Option Shuffling : Yes
Display Question Number : Yes Is Question Mandatory : No Option Orientation : Vertical
Correct Marks : 1 Wrong Marks : 0**

An Example for water soluble base used in ointment preparation

Options :

1. ✔ Carbowaxes
2. ✘ Wool alcohol
3. ✘ Beeswax
4. ✘ Wool fat

**Question Number : 36 Question Id : 80089423491 Question Type : MCQ Option Shuffling : Yes
Display Question Number : Yes Is Question Mandatory : No Option Orientation : Vertical
Correct Marks : 1 Wrong Marks : 0**

Which are transparent non greasy semisolid preparations?

Options :

1. ✘ Creams
2. ✘ Ointments
3. ✘ Emulsions
4. ✔ Jellies

Question Number : 37 Question Id : 80089423492 Question Type : MCQ Option Shuffling : Yes Display Question Number : Yes Is Question Mandatory : No Option Orientation : Vertical Correct Marks : 1 Wrong Marks : 0

Which of the following is the example of Oleaginous base used for suppositories?

Options :

1. ✘ Witepsol
2. ✘ Massuppol
3. ✔ Cocoa butter
4. ✘ PEG

Question Number : 38 Question Id : 80089423493 Question Type : MCQ Option Shuffling : Yes Display Question Number : Yes Is Question Mandatory : No Option Orientation : Vertical Correct Marks : 1 Wrong Marks : 0

What is Massa Esterinum?

Options :

1. ✘ Water soluble base

2. ✘ Water miscible base

3. ✘ Oily base

4. ✔ Emulsifying base

Question Number : 39 Question Id : 80089423494 Question Type : MCQ Option Shuffling : Yes

Display Question Number : Yes Is Question Mandatory : No Option Orientation : Vertical

Correct Marks : 1 Wrong Marks : 0

Which of the following is not a property of parenterals?

Options :

1. ✔ Easy swallowing

2. ✘ Useful for unconscious patients

3. ✘ Rapid onset of action

4. ✘ Avoids first pass metabolism

Question Number : 40 Question Id : 80089423495 Question Type : MCQ Option Shuffling : Yes

Display Question Number : Yes Is Question Mandatory : No Option Orientation : Vertical

Correct Marks : 1 Wrong Marks : 0

Which is not used as antibacterial agent?

Options :

1. ✘ Benzalkonium Chloride

2. ✓ Polysorbate

3. ✘ Cresol

4. ✘ Phenyl mercuric nitrate

Question Number : 41 Question Id : 80089423496 Question Type : MCQ Option Shuffling : Yes

Display Question Number : Yes Is Question Mandatory : No Option Orientation : Vertical

Correct Marks : 1 Wrong Marks : 0

Which injection is administered into subarachnoid space?

Options :

1. ✓ Intrathecal injection

2. ✘ Intraspinial injection

3. ✘ Intracisternal injection

4. ✘ Intracerebral injection

Question Number : 42 Question Id : 80089423497 Question Type : MCQ Option Shuffling : Yes

Display Question Number : Yes Is Question Mandatory : No Option Orientation : Vertical

Correct Marks : 1 Wrong Marks : 0

Ocular contact time is more in _____

Options :

1. ✘ Eye drops

2. ✘ Eye lotions

3. ✓ Eye ointments

4. ✘ Eye suspensions

Question Number : 43 Question Id : 80089423498 Question Type : MCQ Option Shuffling : Yes

Display Question Number : Yes Is Question Mandatory : No Option Orientation : Vertical

Correct Marks : 1 Wrong Marks : 0

Which committee is formally known as “Chopra Committee”?

Options :

1. ✘ PTC committee

2. ✓ Drug Enquiry committee

3. ✘ Pharmacy Administrative committee

4. ✘ Therapeutic Committee

Question Number : 44 Question Id : 80089423499 Question Type : MCQ Option Shuffling : Yes

Display Question Number : Yes Is Question Mandatory : No Option Orientation : Vertical

Correct Marks : 1 Wrong Marks : 0

What is the term for state pharmacy council members?

Options :

1. ✘ 4 years

2. ✓ 5 years

3. ✘ 6 years

4. ✘ 3 years

Question Number : 45 Question Id : 80089423500 Question Type : MCQ Option Shuffling : Yes

Display Question Number : Yes Is Question Mandatory : No Option Orientation : Vertical

Correct Marks : 1 Wrong Marks : 0

How many nominated members will be in state pharmacy council?

Options :

1. ✘ Four

2. ✘ Six

3. ✘ Seven

4. ✔ Five

Question Number : 46 Question Id : 80089423501 Question Type : MCQ Option Shuffling : Yes

Display Question Number : Yes Is Question Mandatory : No Option Orientation : Vertical

Correct Marks : 1 Wrong Marks : 0

If any drug container observed with filthy, putrid or decomposed substances, then that is called _____

Options :

1. ✘ Spurious drug

2. ✘ Misbranded drug

3. ✓ Adulterated drug

4. ✘ Generic drug

Question Number : 47 Question Id : 80089423502 Question Type : MCQ Option Shuffling : Yes

Display Question Number : Yes Is Question Mandatory : No Option Orientation : Vertical

Correct Marks : 1 Wrong Marks : 0

What qualification is required for appointment as Drugs Inspector?

Options :

1. ✓ Degree in Pharmacy

2. ✘ Diploma in Pharmacy

3. ✘ Diploma in Nursing

4. ✘ Degree in Commerce

Question Number : 48 Question Id : 80089423503 Question Type : MCQ Option Shuffling : Yes

Display Question Number : Yes Is Question Mandatory : No Option Orientation : Vertical

Correct Marks : 1 Wrong Marks : 0

In Which year the Drugs & Magic Remedies Act Rules were framed?

Options :

1. ✘ 1954

2. ✓ 1955

3. ✘ 1956

4. ✖ 1957

Question Number : 49 Question Id : 80089423504 Question Type : MCQ Option Shuffling : Yes

Display Question Number : Yes Is Question Mandatory : No Option Orientation : Vertical

Correct Marks : 1 Wrong Marks : 0

Cultivation of opium poppy or cannabis comes under _____

Options :

1. ✔ Prohibition control and regulations of Narcotic drugs & Psychotropic substances (NDPS)

2. ✖ Offences & penalties of NDPS

3. ✖ Drugs & Cosmetic act

4. ✖ The Pharmacy act

Question Number : 50 Question Id : 80089423505 Question Type : MCQ Option Shuffling : Yes

Display Question Number : Yes Is Question Mandatory : No Option Orientation : Vertical

Correct Marks : 1 Wrong Marks : 0

Which of the following is not included in List A of Poisonous substances under Poisons act 1919?

Options :

1. ✔ Carbohic acids

2. ✖ Aconite

3. ✖ Arsenic

4. ✖ Digitalis

Pharmaceutical Chemistry

Section Id :	800894459
Section Number :	2
Section type :	Online
Mandatory or Optional :	Mandatory
Number of Questions :	50
Number of Questions to be attempted :	50
Section Marks :	50
Enable Mark as Answered Mark for Review and Clear Response :	Yes
Sub-Section Number :	1
Sub-Section Id :	800894525
Question Shuffling Allowed :	Yes

Question Number : 51 Question Id : 80089423506 Question Type : MCQ Option Shuffling : Yes
Display Question Number : Yes Is Question Mandatory : No Option Orientation : Vertical
Correct Marks : 1 Wrong Marks : 0

Arrhenius theory states that acids are substances which dissociate in water will give _____ ions

Options :

1. ✘ OH^-

2. ✔ H^+

3. ✘ HOH

4. ✘ H_2O_2

Question Number : 52 Question Id : 80089423507 Question Type : MCQ Option Shuffling : Yes

Display Question Number : Yes Is Question Mandatory : No Option Orientation : Vertical

Correct Marks : 1 Wrong Marks : 0

Aluminium hydroxide gel is generally used as _____

Options :

1. ✘ Carminative
2. ✔ Antacid
3. ✘ Hypnotic & Sedative
4. ✘ Diuretic

Question Number : 53 Question Id : 80089423508 Question Type : MCQ Option Shuffling : Yes

Display Question Number : Yes Is Question Mandatory : No Option Orientation : Vertical

Correct Marks : 1 Wrong Marks : 0

Name the molecular formula $\text{Al}_2\text{O}_3 \cdot 2\text{SiO}_2 \cdot 2\text{H}_2\text{O}$

Options :

1. ✘ Aluminium hydroxide
2. ✘ Hydrated silica di oxide
3. ✔ Heavy kaolin
4. ✘ Bentonite

Question Number : 54 Question Id : 80089423509 Question Type : MCQ Option Shuffling : Yes

Display Question Number : Yes Is Question Mandatory : No Option Orientation : Vertical

Correct Marks : 1 Wrong Marks : 0

What is the chemical name for 'Soap stone'?

Options :

1. ✘ Calamine

2. ✘ Zinc oxide

3. ✔ Talc

4. ✘ Kaoline

Question Number : 55 Question Id : 80089423510 Question Type : MCQ Option Shuffling : Yes

Display Question Number : Yes Is Question Mandatory : No Option Orientation : Vertical

Correct Marks : 1 Wrong Marks : 0

What kind of mechanism the Hydrogen peroxide undergoes to act as antiseptic?

Options :

1. ✔ Oxidation

2. ✘ Reduction

3. ✘ Substitution

4. ✘ Polymerisation

Question Number : 56 Question Id : 80089423511 Question Type : MCQ Option Shuffling : Yes
Display Question Number : Yes Is Question Mandatory : No Option Orientation : Vertical
Correct Marks : 1 Wrong Marks : 0

Identify the inorganic astringent used in the treatment of necrotic poisoning.

Options :

1. ✘ Alum
2. ✘ Aluminium chloride
3. ✔ Zinc Sulphate
4. ✘ Zirconium Sulphate

Question Number : 57 Question Id : 80089423512 Question Type : MCQ Option Shuffling : Yes
Display Question Number : Yes Is Question Mandatory : No Option Orientation : Vertical
Correct Marks : 1 Wrong Marks : 0

What is the use of sodium fluoride?

Options :

1. ✔ Promote demineralization
2. ✘ antiemetic
3. ✘ antidepressant
4. ✘ anticonvulsant

Question Number : 58 Question Id : 80089423513 Question Type : MCQ Option Shuffling : Yes
Display Question Number : Yes Is Question Mandatory : No Option Orientation : Vertical

Correct Marks : 1 Wrong Marks : 0

“Butter of Zinc” is also known as _____

Options :

1. ✘ Zinc bicarbonate
2. ✔ Zinc chloride
3. ✘ Zinc carbonate
4. ✘ Zinc oxide

Question Number : 59 Question Id : 80089423514 Question Type : MCQ Option Shuffling : Yes

Display Question Number : Yes Is Question Mandatory : No Option Orientation : Vertical

Correct Marks : 1 Wrong Marks : 0

Ammonium chloride will be assayed by _____

Options :

1. ✘ Redox titration
2. ✘ Non-aqueous titration
3. ✔ Acidimetry-alkalimetry titration
4. ✘ Complexometry titration

Question Number : 60 Question Id : 80089423515 Question Type : MCQ Option Shuffling : Yes

Display Question Number : Yes Is Question Mandatory : No Option Orientation : Vertical

Correct Marks : 1 Wrong Marks : 0

Which of the following ions diffuses easily between extracellular and intracellular compartments?

Options :

1. ✘ Magnesium
2. ✔ Chloride
3. ✘ Phosphate
4. ✘ Potassium

Question Number : 61 Question Id : 80089423516 Question Type : MCQ Option Shuffling : Yes

Display Question Number : Yes Is Question Mandatory : No Option Orientation : Vertical

Correct Marks : 1 Wrong Marks : 0

Sodium acetate incompatibility can be overcome by using _____

Options :

1. ✘ Potassium acetate
2. ✘ Sodium tartrate
3. ✔ Sodium metabisulfite
4. ✘ Potassium citrate

Question Number : 62 Question Id : 80089423517 Question Type : MCQ Option Shuffling : Yes

Display Question Number : Yes Is Question Mandatory : No Option Orientation : Vertical

Correct Marks : 1 Wrong Marks : 0

Calcium gluconate is assayed by _____

Options :

1. ✘ Acid-base titration
2. ✔ Complexometric titration
3. ✘ Non-aqueous titration
4. ✘ Redox titration

Question Number : 63 Question Id : 80089423518 Question Type : MCQ Option Shuffling : Yes

Display Question Number : Yes Is Question Mandatory : No Option Orientation : Vertical

Correct Marks : 1 Wrong Marks : 0

Gold -198 is a _____

Options :

1. ✘ Radical
2. ✘ Compound
3. ✔ Isotope
4. ✘ Mixture

Question Number : 64 Question Id : 80089423519 Question Type : MCQ Option Shuffling : Yes

Display Question Number : Yes Is Question Mandatory : No Option Orientation : Vertical

Correct Marks : 1 Wrong Marks : 0

Identify the method used for the Limit test for arsenic.

Options :

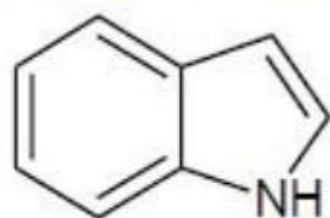
1. ✘ Arrhenius method
2. ✘ Oswald method
3. ✔ Gutzeit method
4. ✘ Karl-Fischer method

Question Number : 65 Question Id : 80089423520 Question Type : MCQ Option Shuffling : Yes

Display Question Number : Yes Is Question Mandatory : No Option Orientation : Vertical

Correct Marks : 1 Wrong Marks : 0

Name the below compound



Options :

1. ✘ Indoline
2. ✔ Indole
3. ✘ Indane
4. ✘ Isoindane

Question Number : 66 Question Id : 80089423521 Question Type : MCQ Option Shuffling : Yes

Display Question Number : Yes Is Question Mandatory : No Option Orientation : Vertical

Correct Marks : 1 Wrong Marks : 0

Chemical name of Proflavine is _____

Options :

1. ✘ 2,6-Phenylacridine
2. ✔ 3,6-Diaminoacridine
3. ✘ 3,4-Diaminoacridine
4. ✔ 3,6-Diaminoacridine

Note: For this question, ambiguity is found in question/answer. Candidate will get full marks for this question if any of the correct options are chosen.

Question Number : 67 Question Id : 80089423522 Question Type : MCQ Option Shuffling : Yes

Display Question Number : Yes Is Question Mandatory : No Option Orientation : Vertical

Correct Marks : 1 Wrong Marks : 0

Solubility of Chlorocresol is _____

Options :

1. ✘ Freely soluble in water
2. ✘ Partially soluble in hot water
3. ✔ Freely soluble in organic solvents
4. ✘ Insoluble in organic solvents

Question Number : 68 Question Id : 80089423523 Question Type : MCQ Option Shuffling : Yes

Display Question Number : Yes Is Question Mandatory : No Option Orientation : Vertical

Correct Marks : 1 Wrong Marks : 0

Which Hydantoin derivative is used for epilepsy?

Options :

1. ✘ Tegretol
2. ✘ Troxidone
3. ✘ Sodium Valproate
4. ✔ Eptoin

Question Number : 69 Question Id : 80089423524 Question Type : MCQ Option Shuffling : Yes

Display Question Number : Yes Is Question Mandatory : No Option Orientation : Vertical

Correct Marks : 1 Wrong Marks : 0

Digitoxin is used as _____

Options :

1. ✘ Diuretic
2. ✔ Cardio tonic
3. ✘ Anti- Epilepsy
4. ✘ Antiseptic

Question Number : 70 Question Id : 80089423525 Question Type : MCQ Option Shuffling : Yes

Display Question Number : Yes Is Question Mandatory : No Option Orientation : Vertical

Correct Marks : 1 Wrong Marks : 0

Testosterone is derived from which of the following steroidal nucleus?

Options :

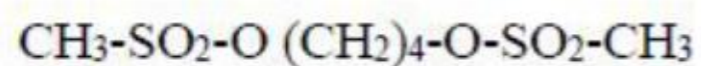
1. ✓ Androstane
2. ✗ Estrane
3. ✗ Pregnane
4. ✗ Cholestane

Question Number : 71 Question Id : 80089423526 Question Type : MCQ Option Shuffling : Yes

Display Question Number : Yes Is Question Mandatory : No Option Orientation : Vertical

Correct Marks : 1 Wrong Marks : 0

Name the below compound



Options :

1. ✗ Azathioprine
2. ✗ Chlorambucil
3. ✓ Busulfan
4. ✗ Actinomycin

Question Number : 72 Question Id : 80089423527 Question Type : MCQ Option Shuffling : Yes

Display Question Number : Yes Is Question Mandatory : No Option Orientation : Vertical

Correct Marks : 1 Wrong Marks : 0

Identify the principle active alkylator of Cyclophosphamide

Options :

1. ✘ Dantroline
2. ✘ Phosphoramidate
3. ✔ Acrolein
4. ✘ Aldophosphamide

Question Number : 73 Question Id : 80089423528 Question Type : MCQ Option Shuffling : Yes

Display Question Number : Yes Is Question Mandatory : No Option Orientation : Vertical

Correct Marks : 1 Wrong Marks : 0

What is Phthalylsulphathiazole?

Options :

1. ✘ N¹ and N² substituted sulfa drug
2. ✘ N⁴ substituted sulfa drug
3. ✔ N¹ and N⁴ substituted sulfa drug
4. ✘ N¹ and N³ substituted sulfa drug

Question Number : 74 Question Id : 80089423529 Question Type : MCQ Option Shuffling : Yes

Display Question Number : Yes Is Question Mandatory : No Option Orientation : Vertical

Correct Marks : 1 Wrong Marks : 0

Which is false statement about dapsone?

Options :

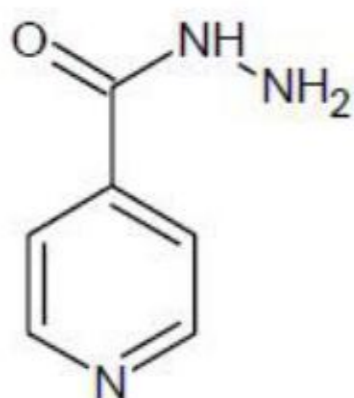
1. ✘ IUPAC name of dapsone is 4, 4'-diamino diphenyl sulphone.
2. ✘ Dapsone containing di anilino group.
3. ✘ Dapsone is used in Leprosy, Pneumonia and Dermatitis
4. ✔ N-oxidation will not be involved with the metabolism of dapsone.

Question Number : 75 Question Id : 80089423530 Question Type : MCQ Option Shuffling : Yes

Display Question Number : Yes Is Question Mandatory : No Option Orientation : Vertical

Correct Marks : 1 Wrong Marks : 0

What is the use of this compound?



Options :

1. ✘ Anti -convulsant
2. ✔ Anti-tuberculosis
3. ✘ Anti -septic
4. ✘ Anti-neoplastic

Question Number : 76 Question Id : 80089423531 Question Type : MCQ Option Shuffling : Yes

Display Question Number : Yes Is Question Mandatory : No Option Orientation : Vertical

Correct Marks : 1 Wrong Marks : 0

What is the Mechanism of action of Metronidazole?

Options :

1. ✘ Inhibits the activity of an organic anion transporter
2. ✔ Activation to a reactive radical species that leads to DNA damage
3. ✘ Bacteriostatic inhibition of protein synthesis
4. ✘ Increasing Membrane permeation

Question Number : 77 Question Id : 80089423532 Question Type : MCQ Option Shuffling : Yes

Display Question Number : Yes Is Question Mandatory : No Option Orientation : Vertical

Correct Marks : 1 Wrong Marks : 0

Gentamycin is isolated from _____

Options :

1. ✔ Micromonospor purpuria
2. ✘ Staphylococcus aureus
3. ✘ Escherichia coli
4. ✘ Candida albicans

Question Number : 78 Question Id : 80089423533 Question Type : MCQ Option Shuffling : Yes
Display Question Number : Yes Is Question Mandatory : No Option Orientation : Vertical
Correct Marks : 1 Wrong Marks : 0

Chloroquine contains which of the following heterocyclic system?

Options :

1. ✓ Quinoline
2. ✗ Quinazoline
3. ✗ Pteridine
4. ✗ Crinoline

Question Number : 79 Question Id : 80089423534 Question Type : MCQ Option Shuffling : Yes
Display Question Number : Yes Is Question Mandatory : No Option Orientation : Vertical
Correct Marks : 1 Wrong Marks : 0

7-Chloro-5-(2-chlorophenyl)-1,3-dihydro-3-hydroxy-2H-1,4-benzodiazepine-2-one is also called as _____

Options :

1. ✓ Lorazepam
2. ✗ Diazepam
3. ✗ Meprobamate
4. ✗ Chlorpromazine

Question Number : 80 Question Id : 80089423535 Question Type : MCQ Option Shuffling : Yes

Display Question Number : Yes Is Question Mandatory : No Option Orientation : Vertical

Correct Marks : 1 Wrong Marks : 0

What is the chemical name for Phenobarbitone?

Options :

1. ✓ 5-ethyl-5-phenyl barbituric acid
2. ✗ 2-ethyl-5-phenyl barbituric acid
3. ✗ 3-ethyl-3-phenyl barbituric acid
4. ✗ 4-ethyl-5-phenyl barbituric acid

Question Number : 81 Question Id : 80089423536 Question Type : MCQ Option Shuffling : Yes

Display Question Number : Yes Is Question Mandatory : No Option Orientation : Vertical

Correct Marks : 1 Wrong Marks : 0

What is the Route of administration of Cyclopropane?

Options :

1. ✗ Intravenous
2. ✗ Intramuscular
3. ✓ Inhalation
4. ✗ Sublingual

Question Number : 82 Question Id : 80089423537 Question Type : MCQ Option Shuffling : Yes

Display Question Number : Yes Is Question Mandatory : No Option Orientation : Vertical

Correct Marks : 1 Wrong Marks : 0

What is the chemical name of Caffeine?

Options :

1. ✘ 1,3,-Dimethylxanthine
2. ✘ 1,7-Dimethylxanthine
3. ✘ 1,3,5-Trimethylxanthine
4. ✔ 1,3,7-Trimethylxanthine

Question Number : 83 Question Id : 80089423538 Question Type : MCQ Option Shuffling : Yes

Display Question Number : Yes Is Question Mandatory : No Option Orientation : Vertical

Correct Marks : 1 Wrong Marks : 0

Salbutamol's brand name is _____

Options :

1. ✔ Asthalin
2. ✘ Codylex
3. ✘ Bricanyl
4. ✘ Ephedrex

Question Number : 84 Question Id : 80089423539 Question Type : MCQ Option Shuffling : Yes

Display Question Number : Yes Is Question Mandatory : No Option Orientation : Vertical

Correct Marks : 1 Wrong Marks : 0

Identify the type of ring system present in Propranolol

Options :

1. ✘ Anthracene
2. ✘ Carbazoline
3. ✘ Imidazoline
4. ✔ Naphthalene

Question Number : 85 Question Id : 80089423540 Question Type : MCQ Option Shuffling : Yes

Display Question Number : Yes Is Question Mandatory : No Option Orientation : Vertical

Correct Marks : 1 Wrong Marks : 0

Which are Cholinergic agents?

Options :

1. ✘ Ethers of choline
2. ✘ Ketones of choline
3. ✔ Esters of Choline
4. ✘ Aldehydes of choline

Question Number : 86 Question Id : 80089423541 Question Type : MCQ Option Shuffling : Yes

Display Question Number : Yes Is Question Mandatory : No Option Orientation : Vertical

Correct Marks : 1 Wrong Marks : 0

Which of the following drug belongs to steroidal diuretic?

Options :

1. ✘ Furosemide
2. ✔ Spironolactone
3. ✘ Chlorothiazide
4. ✘ Mannitol

**Question Number : 87 Question Id : 80089423542 Question Type : MCQ Option Shuffling : Yes
Display Question Number : Yes Is Question Mandatory : No Option Orientation : Vertical
Correct Marks : 1 Wrong Marks : 0**

Clofibrate is used as _____

Options :

1. ✘ Antihypertensive agent
2. ✔ Anti lipidemic agent
3. ✘ hypertensive
4. ✘ Anti anxiety

**Question Number : 88 Question Id : 80089423543 Question Type : MCQ Option Shuffling : Yes
Display Question Number : Yes Is Question Mandatory : No Option Orientation : Vertical
Correct Marks : 1 Wrong Marks : 0**

Which of the following anti-diabetic drug belongs to biguande?

Options :

1. ✓ Metformin

2. ✘ Acarbose

3. ✘ Glyburide

4. ✘ Pioglitazone

Question Number : 89 Question Id : 80089423544 Question Type : MCQ Option Shuffling : Yes

Display Question Number : Yes Is Question Mandatory : No Option Orientation : Vertical

Correct Marks : 1 Wrong Marks : 0

Dicoumaral is also called as _____

Options :

1. ✓ Bishydroxycoumarin

2. ✘ Metadione

3. ✘ Dichlorocoumarin

4. ✘ Dinitro coumarin

Question Number : 90 Question Id : 80089423545 Question Type : MCQ Option Shuffling : Yes

Display Question Number : Yes Is Question Mandatory : No Option Orientation : Vertical

Correct Marks : 1 Wrong Marks : 0

Pethidine is _____

Options :

1. ✓ a derivative of piperidine
2. ✗ a derivative of pyridine
3. ✗ a derivative of piperazine
4. ✗ a derivative of pyrimidine

Question Number : 91 Question Id : 80089423546 Question Type : MCQ Option Shuffling : Yes

Display Question Number : Yes Is Question Mandatory : No Option Orientation : Vertical

Correct Marks : 1 Wrong Marks : 0

What is the use of methylthiouracil?

Options :

1. ✗ Diuretic
2. ✗ Antiarrhythmia
3. ✗ Antifungal
4. ✓ Antithyroid

Question Number : 92 Question Id : 80089423547 Question Type : MCQ Option Shuffling : Yes

Display Question Number : Yes Is Question Mandatory : No Option Orientation : Vertical

Correct Marks : 1 Wrong Marks : 0

Detection of keto-sugar can be done by_____

Options :

1. ✓ Seliwanoff's test

2. ✘ Benedict's test
3. ✘ Fehling's test
4. ✘ Aniline acetate test

Question Number : 93 Question Id : 80089423548 Question Type : MCQ Option Shuffling : Yes Display Question Number : Yes Is Question Mandatory : No Option Orientation : Vertical Correct Marks : 1 Wrong Marks : 0

What is starch?

Options :

1. ✔ Poly saccharide
2. ✘ Poly peptide
3. ✘ Poly glycogen
4. ✘ Polymer

Question Number : 94 Question Id : 80089423549 Question Type : MCQ Option Shuffling : Yes Display Question Number : Yes Is Question Mandatory : No Option Orientation : Vertical Correct Marks : 1 Wrong Marks : 0

The formation of ketone bodies takes place in_____

Options :

1. ✘ Blood

2. ✘ Spleen

3. ✘ Kidney

4. ✔ Liver

Question Number : 95 Question Id : 80089423550 Question Type : MCQ Option Shuffling : Yes

Display Question Number : Yes Is Question Mandatory : No Option Orientation : Vertical

Correct Marks : 1 Wrong Marks : 0

What is atherosclerosis?

Options :

1. ✔ Thickening of arteries

2. ✘ Thinning of lungs

3. ✘ Thickening of lungs

4. ✘ Thinning of arteries

Question Number : 96 Question Id : 80089423551 Question Type : MCQ Option Shuffling : Yes

Display Question Number : Yes Is Question Mandatory : No Option Orientation : Vertical

Correct Marks : 1 Wrong Marks : 0

Glucose-6-phosphatase (G6P) is deficient in _____

Options :

1. ✔ Von Gierke's disease

2. ✘ Pompe's disease

3. ✘ Cori's disease

4. ✘ McArdle's disease

Question Number : 97 Question Id : 80089423552 Question Type : MCQ Option Shuffling : Yes

Display Question Number : Yes Is Question Mandatory : No Option Orientation : Vertical

Correct Marks : 1 Wrong Marks : 0

What is solar vitamin?

Options :

1. ✘ Vitamin A

2. ✘ Vitamin B

3. ✘ Vitamin C

4. ✔ Vitamin D

Question Number : 98 Question Id : 80089423553 Question Type : MCQ Option Shuffling : Yes

Display Question Number : Yes Is Question Mandatory : No Option Orientation : Vertical

Correct Marks : 1 Wrong Marks : 0

The combination of Apoenzyme and coenzyme called _____

Options :

1. ✔ Holoenzyme

2. ✘ Enzyme substrate complex

3. ✘ Prosthetic group

4. ✘ Enzyme product complex

Question Number : 99 Question Id : 80089423554 Question Type : MCQ Option Shuffling : Yes

Display Question Number : Yes Is Question Mandatory : No Option Orientation : Vertical

Correct Marks : 1 Wrong Marks : 0

What is polycythemia?

Options :

1. ✔ Disease associated with bone marrow

2. ✘ Disease associated with lungs

3. ✘ Disease associated with spleen

4. ✘ Disease associated with liver

Question Number : 100 Question Id : 80089423555 Question Type : MCQ Option Shuffling : Yes

Display Question Number : Yes Is Question Mandatory : No Option Orientation : Vertical

Correct Marks : 1 Wrong Marks : 0

'River of Life' is _____

Options :

1. ✘ Serum

2. ✘ Water

3. ✔ Blood

4. ✘ CSF- Cerebro spinal fluid

Pharmacognosy

Section Id :	800894460
Section Number :	3
Section type :	Online
Mandatory or Optional :	Mandatory
Number of Questions :	50
Number of Questions to be attempted :	50
Section Marks :	50
Enable Mark as Answered Mark for Review and Clear Response :	Yes
Sub-Section Number :	1
Sub-Section Id :	800894526
Question Shuffling Allowed :	Yes

Question Number : 101 Question Id : 80089423556 Question Type : MCQ Option Shuffling : Yes

Display Question Number : Yes Is Question Mandatory : No Option Orientation : Vertical

Correct Marks : 1 Wrong Marks : 0

The name 'Pharmacognosy' is derived from the following two Greek words, identify?

Options :

1. ✘ Analecta and Pharma

2. ✘ Gignosco and Pharma

3. ✔ Pharmacakon and Gignosco

4. ✘ Gignosco and Medica

Question Number : 102 Question Id : 80089423557 Question Type : MCQ Option Shuffling : Yes

Display Question Number : Yes Is Question Mandatory : No Option Orientation : Vertical

Correct Marks : 1 Wrong Marks : 0

Which tests are used to identify the glycosides?

Options :

1. ✘ Fehlings, Barfoed, Benedict's tests

2. ✔ Borntrager, Legals, Liebermann-Burchard's test

3. ✘ Dragendroffs, Mayer's tests

4. ✘ Millen's, Biuret, Ninhydrin tests

Question Number : 103 Question Id : 80089423558 Question Type : MCQ Option Shuffling : Yes

Display Question Number : Yes Is Question Mandatory : No Option Orientation : Vertical

Correct Marks : 1 Wrong Marks : 0

Opium is _____

Options :

1. ✔ The dried latex exudate of the unripe incised capsules.

2. ✘ The dried hydro extract of the ripe capsules.
3. ✘ The dried alcoholic extract of the unripe capsules
4. ✘ A concentrated alcoholic extract of the poppy straw.

**Question Number : 104 Question Id : 80089423559 Question Type : MCQ Option Shuffling : Yes
Display Question Number : Yes Is Question Mandatory : No Option Orientation : Vertical
Correct Marks : 1 Wrong Marks : 0**

Which of the following is regenerated fibre with 10% moisture, used for preparation of surgical dressings and absorbent wool?

Options :

1. ✔ Rayon
2. ✘ Nylon
3. ✘ Terylene
4. ✘ Jute

**Question Number : 105 Question Id : 80089423560 Question Type : MCQ Option Shuffling : Yes
Display Question Number : Yes Is Question Mandatory : No Option Orientation : Vertical
Correct Marks : 1 Wrong Marks : 0**

Conical, thick walled, slightly curved trichomes is an anatomical feature of _____

Options :

1. ✘ Belladonna
2. ✘ Digitalis
3. ✘ Vasaka
4. ✔ Senna

**Question Number : 106 Question Id : 80089423561 Question Type : MCQ Option Shuffling : Yes
Display Question Number : Yes Is Question Mandatory : No Option Orientation : Vertical
Correct Marks : 1 Wrong Marks : 0**

Anethol is present in _____

Options :

1. ✘ Dill
2. ✘ Coriander
3. ✔ Fennel
4. ✘ Ajwain

**Question Number : 107 Question Id : 80089423562 Question Type : MCQ Option Shuffling : Yes
Display Question Number : Yes Is Question Mandatory : No Option Orientation : Vertical
Correct Marks : 1 Wrong Marks : 0**

Pungency of *Zingiber Officinale* rhizome is due to _____

Options :

1. ✔ Gingerol

2. ✘ Gingeral

3. ✘ Citral

4. ✘ Citrol

Question Number : 108 Question Id : 80089423563 Question Type : MCQ Option Shuffling : Yes Display Question Number : Yes Is Question Mandatory : No Option Orientation : Vertical Correct Marks : 1 Wrong Marks : 0

Bromhexin HCL is synthetic derivative of _____

Options :

1. ✘ Balsams

2. ✔ Vasicine

3. ✘ Eugenol

4. ✘ Coriandrol

Question Number : 109 Question Id : 80089423564 Question Type : MCQ Option Shuffling : Yes Display Question Number : Yes Is Question Mandatory : No Option Orientation : Vertical Correct Marks : 1 Wrong Marks : 0

In which part of Rauwolfia, indole and indoline alkaloids are present?

Options :

1. ✘ Leaves

2. ✘ Flower

3. ✔ Bark of root

4. ✘ Stem bark

Question Number : 110 Question Id : 80089423565 Question Type : MCQ Option Shuffling : Yes

Display Question Number : Yes Is Question Mandatory : No Option Orientation : Vertical

Correct Marks : 1 Wrong Marks : 0

Which Amino alkaloid possess anti - cancer activity?

Options :

1. ✘ Ephedra

2. ✘ Vinca.

3. ✔ Colchicum

4. ✘ Camphotheca

Question Number : 111 Question Id : 80089423566 Question Type : MCQ Option Shuffling : Yes

Display Question Number : Yes Is Question Mandatory : No Option Orientation : Vertical

Correct Marks : 1 Wrong Marks : 0

Which of the following statement is not belongs to *Gymnema Sylvestre*?

Options :

1. ✘ It is popularly known as “gurmar” for its distinct property as sugar destroyer.

2. ✘ It belongs to family of Asclepiadaceae.

3. ✘ It contains gymnemic acids as an active constituents

4. ✔ It is an alkaloid used to treat diabetic complications.

Question Number : 112 Question Id : 80089423567 Question Type : MCQ Option Shuffling : Yes

Display Question Number : Yes Is Question Mandatory : No Option Orientation : Vertical

Correct Marks : 1 Wrong Marks : 0

Which of the following is used in dashamoolarista with diuretic activity?

Options :

1. ✘ P.amagdalus

2. ✔ Tribulus terrestris

3. ✘ Polygala Senaga

4. ✘ Dioscorea

Question Number : 113 Question Id : 80089423568 Question Type : MCQ Option Shuffling : Yes

Display Question Number : Yes Is Question Mandatory : No Option Orientation : Vertical

Correct Marks : 1 Wrong Marks : 0

Identify the following chemical constituent, which is responsible for antiviral action of Neem

Options :

1. ✔ Nimbin

2. ✘ Azadirachitin

3. ✘ Nelanin

4. ✘ Kaemferol

Question Number : 114 Question Id : 80089423569 Question Type : MCQ Option Shuffling : Yes

Display Question Number : Yes Is Question Mandatory : No Option Orientation : Vertical

Correct Marks : 1 Wrong Marks : 0

Which drug acts on Uterine and vascular smooth muscle?

Options :

1. ✘ Vinca

2. ✘ Rauwolfia

3. ✔ Ergot

4. ✘ Morphine

Question Number : 115 Question Id : 80089423570 Question Type : MCQ Option Shuffling : Yes

Display Question Number : Yes Is Question Mandatory : No Option Orientation : Vertical

Correct Marks : 1 Wrong Marks : 0

Which of the following statements is FALSE for Sandalwood?

Options :

1. ✘ Santalol is the major chemical constituents of Sandal wood

2. ✘ Sandalwood belong to Santalaceae family

3. ✘ Steam Distillation method is used for isolation of sandal wood oil

4. ✓ Sandal wood oil is used for Inflammation treatment

Question Number : 116 Question Id : 80089423571 Question Type : MCQ Option Shuffling : Yes Display Question Number : Yes Is Question Mandatory : No Option Orientation : Vertical

Correct Marks : 1 Wrong Marks : 0

Sodium alginate is used as _____

Options :

1. ✓ Good suspending and thickening agent

2. ✗ Good emulsifying agent

3. ✗ Vitamin supplement

4. ✗ Diuretic

Question Number : 117 Question Id : 80089423572 Question Type : MCQ Option Shuffling : Yes Display Question Number : Yes Is Question Mandatory : No Option Orientation : Vertical

Correct Marks : 1 Wrong Marks : 0

Which among the following statements is FALSE for Liquorice?

Options :

1. ✗ Liquorice is a pentacyclic triterpenoid saponin

2. ✗ Liquorice belongs to Leguminosae family

3. ✓ Liquorice used for Anti Parkinson's disease

4. ✘ Glycyrrhizine is 50 times sweeter than sucrose

Question Number : 118 Question Id : 80089423573 Question Type : MCQ Option Shuffling : Yes

Display Question Number : Yes Is Question Mandatory : No Option Orientation : Vertical

Correct Marks : 1 Wrong Marks : 0

What is the direct distribution channel of drugs?

Options :

1. ✘ Producer → Retailer → customer
2. ✘ Producer → wholesaler → Retailer → customer
3. ✘ Producer → distributor → customer
4. ✔ Producer → customer

Question Number : 119 Question Id : 80089423574 Question Type : MCQ Option Shuffling : Yes

Display Question Number : Yes Is Question Mandatory : No Option Orientation : Vertical

Correct Marks : 1 Wrong Marks : 0

Which of the following items is an expired drug formulation?

Options :

1. ✘ Surplus items
2. ✔ Absolute items
3. ✘ Scrap items

4. ✘ Finished items

Question Number : 120 Question Id : 80089423575 Question Type : MCQ Option Shuffling : Yes

Display Question Number : Yes Is Question Mandatory : No Option Orientation : Vertical

Correct Marks : 1 Wrong Marks : 0

Placing of the products into categories in order of economic importance is _____

Options :

1. ✔ ABC inventory management

2. ✘ Just in time

3. ✘ Consignment

4. ✘ Cycle counting

Question Number : 121 Question Id : 80089423576 Question Type : MCQ Option Shuffling : Yes

Display Question Number : Yes Is Question Mandatory : No Option Orientation : Vertical

Correct Marks : 1 Wrong Marks : 0

Identify the statement which is not true about objects of inventory control?

Options :

1. ✘ Minimum inventory investment

2. ✘ Maximum customer service

3. ✔ Maximum inventory investment

4. ✘ plant operation in low cost

Question Number : 122 Question Id : 80089423577 Question Type : MCQ Option Shuffling : Yes

Display Question Number : Yes Is Question Mandatory : No Option Orientation : Vertical

Correct Marks : 1 Wrong Marks : 0

Salesmanship is ability to persuade people for_____

Options :

1. ✘ To sell goods or services at the profit to buyer and with benefit to seller
2. ✔ To buy goods or services at the profit to seller and with benefit to buyer
3. ✘ To sell goods or services
4. ✘ To buy goods or services

Question Number : 123 Question Id : 80089423578 Question Type : MCQ Option Shuffling : Yes

Display Question Number : Yes Is Question Mandatory : No Option Orientation : Vertical

Correct Marks : 1 Wrong Marks : 0

Sales return means, goods returned to the supplier due to the following reason.

Options :

1. ✘ Good quality.
2. ✔ Defective quality
3. ✘ Super quality
4. ✘ Intermediate quality

Question Number : 124 Question Id : 80089423579 Question Type : MCQ Option Shuffling : Yes

Display Question Number : Yes Is Question Mandatory : No Option Orientation : Vertical

Correct Marks : 1 Wrong Marks : 0

Type of account for assets- properties is _____

Options :

1. ✓ Real account
2. ✗ Artificial account
3. ✗ Nominal account
4. ✗ Representative account

Question Number : 125 Question Id : 80089423580 Question Type : MCQ Option Shuffling : Yes

Display Question Number : Yes Is Question Mandatory : No Option Orientation : Vertical

Correct Marks : 1 Wrong Marks : 0

Budget is a _____

Options :

1. ✗ Statement of Report
2. ✗ Financial statement
3. ✓ Quantitative statement
4. ✗ Balance sheet

Question Number : 126 Question Id : 80089423581 Question Type : MCQ Option Shuffling : Yes

Display Question Number : Yes Is Question Mandatory : No Option Orientation : Vertical

Correct Marks : 1 Wrong Marks : 0

Disease caused by deficiency of Vitamin B1

Options :

1. ✓ Beri-beri

2. ✗ Scurvy

3. ✗ Rickets

4. ✗ Anaemia

Question Number : 127 Question Id : 80089423582 Question Type : MCQ Option Shuffling : Yes

Display Question Number : Yes Is Question Mandatory : No Option Orientation : Vertical

Correct Marks : 1 Wrong Marks : 0

NIN (National Institute of Nutrition) is located at

Options :

1. ✗ Pune

2. ✓ Hyderabad

3. ✗ Gujarat

4. ✗ Chennai

Question Number : 128 Question Id : 80089423583 Question Type : MCQ Option Shuffling : Yes

Display Question Number : Yes Is Question Mandatory : No Option Orientation : Vertical

Correct Marks : 1 Wrong Marks : 0

The crude drug that is used to control rodents

Options :

1. ✓ Red squill
2. ✗ Chamomile
3. ✗ Tagetus
4. ✗ Digitalis

Question Number : 129 Question Id : 80089423584 Question Type : MCQ Option Shuffling : Yes

Display Question Number : Yes Is Question Mandatory : No Option Orientation : Vertical

Correct Marks : 1 Wrong Marks : 0

Identify the Viral disease

Options :

1. ✗ Typhoid fever
2. ✗ Plague
3. ✗ Diphtheria
4. ✓ Chickenpox

Question Number : 130 Question Id : 80089423585 Question Type : MCQ Option Shuffling : Yes

Display Question Number : Yes Is Question Mandatory : No Option Orientation : Vertical

Correct Marks : 1 Wrong Marks : 0

Rabies is -----infection

Options :

1. ✘ Arthropod borne

2. ✘ Respiratory

3. ✔ Surface

4. ✘ Intestinal

Question Number : 131 Question Id : 80089423586 Question Type : MCQ Option Shuffling : Yes

Display Question Number : Yes Is Question Mandatory : No Option Orientation : Vertical

Correct Marks : 1 Wrong Marks : 0

Which is an Acid fast staining?

Options :

1. ✔ Ziehl–Neelsen staining method

2. ✘ PAP staining method

3. ✘ Romanowsky staining method

4. ✘ Endospore staining method

Question Number : 132 Question Id : 80089423587 Question Type : MCQ Option Shuffling : Yes

Display Question Number : Yes Is Question Mandatory : No Option Orientation : Vertical

Correct Marks : 1 Wrong Marks : 0

Concurrent disinfection is _____

Options :

1. ✘ Done as Patient is shifted or removed after death
2. ✔ Done as soon as the microbes are released from body
3. ✘ Done as a prophylactic measure
4. ✘ Done for disinfecting milk

Question Number : 133 Question Id : 80089423588 Question Type : MCQ Option Shuffling : Yes

Display Question Number : Yes Is Question Mandatory : No Option Orientation : Vertical

Correct Marks : 1 Wrong Marks : 0

'Vaccination' is a _____,

Options :

1. ✘ Method of natural passive immunization
2. ✘ Method of passive immunization
3. ✘ Method of artificial passive immunization
4. ✔ Method of active immunization

Question Number : 134 Question Id : 80089423589 Question Type : MCQ Option Shuffling : Yes

Display Question Number : Yes Is Question Mandatory : No Option Orientation : Vertical

Correct Marks : 1 Wrong Marks : 0

Homeostasis is defined as _____

Options :

1. ✓ Maintaining the volume and composition of body fluids
2. ✗ Maintaining the volume of water
3. ✗ Maintaining the intracellular fluids
4. ✗ Maintaining the extracellular fluids

Question Number : 135 Question Id : 80089423590 Question Type : MCQ Option Shuffling : Yes

Display Question Number : Yes Is Question Mandatory : No Option Orientation : Vertical

Correct Marks : 1 Wrong Marks : 0

Identify the mobile electron carrier in the mitochondrial electron system

Options :

1. ✗ Succinate dehydrogenase
2. ✗ NADH dehydrogenase
3. ✗ FADH dehydrogenase
4. ✓ Ubiquinone

Question Number : 136 Question Id : 80089423591 Question Type : MCQ Option Shuffling : Yes

Display Question Number : Yes Is Question Mandatory : No Option Orientation : Vertical

Correct Marks : 1 Wrong Marks : 0

Pain occurs when _____ receptors come in contact with stimulus

Options :

1. ✓ Nociceptors
2. ✘ Meissner corpuscles
3. ✘ Ruffini corpuscles
4. ✘ Merkel discs

Question Number : 137 Question Id : 80089423592 Question Type : MCQ Option Shuffling : Yes

Display Question Number : Yes Is Question Mandatory : No Option Orientation : Vertical

Correct Marks : 1 Wrong Marks : 0

Which cells contain memory and capabilities to transmit information throughout the body?

Options :

1. ✘ Neuroglia
2. ✓ Neurons
3. ✘ WBC
4. ✘ Cardiac muscle

Question Number : 138 Question Id : 80089423593 Question Type : MCQ Option Shuffling : Yes

Display Question Number : Yes Is Question Mandatory : No Option Orientation : Vertical

Correct Marks : 1 Wrong Marks : 0

Which are Primary lymphocytic organs?

Options :

1. ✘ Spleen

2. ✘ Lymph nodes, spleen
3. ✘ Lymphatic nodules
4. ✔ Red bone marrow and thymus

Question Number : 139 Question Id : 80089423594 Question Type : MCQ Option Shuffling : Yes Display Question Number : Yes Is Question Mandatory : No Option Orientation : Vertical Correct Marks : 1 Wrong Marks : 0

Which combination of Rh group of mother and fetus is lethal to fetus?.

Options :

1. ✘ Rh(+) mother and Rh (+) fetus
2. ✘ Rh (-) mother and Rh (-) fetus
3. ✔ Rh(-) mother and Rh(+) fetus
4. ✘ Rh(+) mother and Rh (-) fetus

Question Number : 140 Question Id : 80089423595 Question Type : MCQ Option Shuffling : Yes Display Question Number : Yes Is Question Mandatory : No Option Orientation : Vertical Correct Marks : 1 Wrong Marks : 0

Bone marrow suppression causes _____

Options :

1. ✘ High count of Neutrophils
2. ✔ Low count of Monocytes

3. ✘ High count of Monocytes

4. ✘ High amount of Basophiles

Question Number : 141 Question Id : 80089423596 Question Type : MCQ Option Shuffling : Yes

Display Question Number : Yes Is Question Mandatory : No Option Orientation : Vertical

Correct Marks : 1 Wrong Marks : 0

Which heart events will not take place, if the semilunar valves do not function?

Options :

1. ✔ Production of heart sound

2. ✘ Blood flow function

3. ✘ Atrial contraction

4. ✘ Ventricular contraction

Question Number : 142 Question Id : 80089423597 Question Type : MCQ Option Shuffling : Yes

Display Question Number : Yes Is Question Mandatory : No Option Orientation : Vertical

Correct Marks : 1 Wrong Marks : 0

Deoxygenated blood from myocardium drains into _____

Options :

1. ✘ Coronary sulcus

2. ✘ Right coronary artery

3. ✘ Left anterior descending(LAD)

4. ✓ Coronary sinus

Question Number : 143 Question Id : 80089423598 Question Type : MCQ Option Shuffling : Yes

Display Question Number : Yes Is Question Mandatory : No Option Orientation : Vertical

Correct Marks : 1 Wrong Marks : 0

In the human lungs, the tiny air sacs are named as _____

Options :

1. ✓ Alveoli

2. ✗ Bronchus

3. ✗ Bronchioles

4. ✗ Arteries

Question Number : 144 Question Id : 80089423599 Question Type : MCQ Option Shuffling : Yes

Display Question Number : Yes Is Question Mandatory : No Option Orientation : Vertical

Correct Marks : 1 Wrong Marks : 0

What are the steps of Excretion of Urine?

Options :

1. ✓ Kidneys → Ureters → Urinary bladder → Urethra

2. ✗ Urinary bladder → Ureters → Kidneys → Urethra

3. ✗ Kidneys → Urinary bladder → Urethra → Ureters

4. ✘ Ureters → Urinary bladder → Kidneys → Urethra

Question Number : 145 Question Id : 80089423600 Question Type : MCQ Option Shuffling : Yes

Display Question Number : Yes Is Question Mandatory : No Option Orientation : Vertical

Correct Marks : 1 Wrong Marks : 0

What is the common connective tissue layer which holds together skeletal muscle bundles?

Options :

1. ✔ Fascia

2. ✘ Aponeurosis

3. ✘ Endomysium

4. ✘ Perimysium

Question Number : 146 Question Id : 80089423601 Question Type : MCQ Option Shuffling : Yes

Display Question Number : Yes Is Question Mandatory : No Option Orientation : Vertical

Correct Marks : 1 Wrong Marks : 0

Muscarinic receptors causes _____

Options :

1. ✔ Vasodilation

2. ✘ Secrete epinephrine

3. ✘ Secrete norepinephrine

4. ✘ Contraction

Question Number : 147 Question Id : 80089423602 Question Type : MCQ Option Shuffling : Yes

Display Question Number : Yes Is Question Mandatory : No Option Orientation : Vertical

Correct Marks : 1 Wrong Marks : 0

Pain receptor is a type of _____

Options :

1. ✘ Meissner corpuscles
2. ✘ Pacinian corpuscles
3. ✔ Free nerve endings
4. ✘ Merkel discs

Question Number : 148 Question Id : 80089423603 Question Type : MCQ Option Shuffling : Yes

Display Question Number : Yes Is Question Mandatory : No Option Orientation : Vertical

Correct Marks : 1 Wrong Marks : 0

Which of the following is not a function of liver?

Options :

1. ✘ Production of bile
2. ✘ Production of cholesterol
3. ✘ Conversion of excess glucose into glycogen
4. ✔ Converting urea into ammonia

Question Number : 149 Question Id : 80089423604 Question Type : MCQ Option Shuffling : Yes

Display Question Number : Yes Is Question Mandatory : No Option Orientation : Vertical

Correct Marks : 1 Wrong Marks : 0

Which hormone is responsible for “fight-or-flight” activity?

Options :

1. ✘ Estrogen and Progesterone
2. ✔ Adrenaline and Noradrenaline
3. ✘ Insulin and Glucagon
4. ✘ Thyroxine and Melatonin

Question Number : 150 Question Id : 80089423605 Question Type : MCQ Option Shuffling : Yes

Display Question Number : Yes Is Question Mandatory : No Option Orientation : Vertical

Correct Marks : 1 Wrong Marks : 0

Which Reproductive system ducts present in male?

Options :

1. ✔ Straight tubules
2. ✘ Uterine tubules
3. ✘ Secondary tubules
4. ✘ Vesicouterine pouch

Pharmacology and Toxicology

Section Id :	800894461
Section Number :	4
Section type :	Online
Mandatory or Optional :	Mandatory
Number of Questions :	50
Number of Questions to be attempted :	50
Section Marks :	50
Enable Mark as Answered Mark for Review and Clear Response :	Yes
Sub-Section Number :	1
Sub-Section Id :	800894527
Question Shuffling Allowed :	Yes

Question Number : 151 Question Id : 80089423606 Question Type : MCQ Option Shuffling : Yes

Display Question Number : Yes Is Question Mandatory : No Option Orientation : Vertical

Correct Marks : 1 Wrong Marks : 0

Example for chemical antagonism_

Options :

1. ✓ BAL and Arsenic
2. ✗ Acetylcholine and Atropine
3. ✗ Adrenaline and Histamine
4. ✗ Pencillin and Tetracycline

Question Number : 152 Question Id : 80089423607 Question Type : MCQ Option Shuffling : Yes
Display Question Number : Yes Is Question Mandatory : No Option Orientation : Vertical
Correct Marks : 1 Wrong Marks : 0

Which of the following is a Phase II drug metabolizing reaction?

Options :

1. ✓ Acetylation
2. ✗ Hydrolysis
3. ✗ Oxidation
4. ✗ Reduction

Question Number : 153 Question Id : 80089423608 Question Type : MCQ Option Shuffling : Yes
Display Question Number : Yes Is Question Mandatory : No Option Orientation : Vertical
Correct Marks : 1 Wrong Marks : 0

Gray baby syndrome is observed in newborn infants due to _____

Options :

1. ✗ Low serum levels of iron
2. ✓ High serum levels of chloramphenicol
3. ✗ High serum levels of sulphonamides
4. ✗ Low levels of heamoglobin

Question Number : 154 Question Id : 80089423609 Question Type : MCQ Option Shuffling : Yes
Display Question Number : Yes Is Question Mandatory : No Option Orientation : Vertical

Correct Marks : 1 Wrong Marks : 0

The minimal alveolar concentration of an inhalational anaesthetic is a measure of its _____

Options :

1. ✓ Potency
2. ✗ Therapeutic index
3. ✗ Diffusibility
4. ✗ Oil:water partition coefficient

Question Number : 155 Question Id : 80089423610 Question Type : MCQ Option Shuffling : Yes

Display Question Number : Yes Is Question Mandatory : No Option Orientation : Vertical

Correct Marks : 1 Wrong Marks : 0

Which is Antipsychotic drug?

Options :

1. ✓ Quetiapine
2. ✗ Amitriptylline
3. ✗ Flupenthixol
4. ✗ Haloperidol

Question Number : 156 Question Id : 80089423611 Question Type : MCQ Option Shuffling : Yes

Display Question Number : Yes Is Question Mandatory : No Option Orientation : Vertical

Correct Marks : 1 Wrong Marks : 0

Barbiturates does not exert one of the following actions

Options :

1. ✘ Anticonvulsant
2. ✔ Analgesic
3. ✘ Antianxiety
4. ✘ Respiratory depressant

Question Number : 157 Question Id : 80089423612 Question Type : MCQ Option Shuffling : Yes

Display Question Number : Yes Is Question Mandatory : No Option Orientation : Vertical

Correct Marks : 1 Wrong Marks : 0

Which is Selective COX-2 inhibitor?

Options :

1. ✘ Mefenamic acid
2. ✘ Ketorolac
3. ✘ Indomethacin
4. ✔ Rofecoxib

Question Number : 158 Question Id : 80089423613 Question Type : MCQ Option Shuffling : Yes

Display Question Number : Yes Is Question Mandatory : No Option Orientation : Vertical

Correct Marks : 1 Wrong Marks : 0

Which drug is choice for trigeminal neuralgia ?

Options :

1. ✘ Aspirin
2. ✘ Imipramine
3. ✔ Carbamazepine
4. ✘ Valproicacid

Question Number : 159 Question Id : 80089423614 Question Type : MCQ Option Shuffling : Yes

Display Question Number : Yes Is Question Mandatory : No Option Orientation : Vertical

Correct Marks : 1 Wrong Marks : 0

Which drug is used in myasthenia gravis?

Options :

1. ✘ Cholinomimetic
2. ✘ Anticholinergic
3. ✘ Adrenomimetic
4. ✔ Anticholinesterase

Question Number : 160 Question Id : 80089423615 Question Type : MCQ Option Shuffling : Yes

Display Question Number : Yes Is Question Mandatory : No Option Orientation : Vertical

Correct Marks : 1 Wrong Marks : 0

The pharmacologic actions of scopolamine closely resemble that of _____

Options :

1. ✘ Hexamethonium

2. ✓ Atropine

3. ✗ Succinylcholine

4. ✗ Pilocarpine

Question Number : 161 Question Id : 80089423616 Question Type : MCQ Option Shuffling : Yes

Display Question Number : Yes Is Question Mandatory : No Option Orientation : Vertical

Correct Marks : 1 Wrong Marks : 0

Atropine act by antagonizing the _____

Options :

1. ✗ Alpha receptors

2. ✗ Beta receptors

3. ✗ Nicotinic receptors

4. ✓ Muscarinic receptors

Question Number : 162 Question Id : 80089423617 Question Type : MCQ Option Shuffling : Yes

Display Question Number : Yes Is Question Mandatory : No Option Orientation : Vertical

Correct Marks : 1 Wrong Marks : 0

Yohimbine is an antagonist of _____

Options :

1. ✓ α_2

2. ✗ α_1

3. ✖ M1

4. ✖ H2

Question Number : 163 Question Id : 80089423618 Question Type : MCQ Option Shuffling : Yes

Display Question Number : Yes Is Question Mandatory : No Option Orientation : Vertical

Correct Marks : 1 Wrong Marks : 0

Alpha and Beta receptors are_____

Options :

1. ✖ ligand gated ion channels

2. ✔ G-protein coupled receptors

3. ✖ Tyrosine kinase linked receptors

4. ✖ Nuclear receptors

Question Number : 164 Question Id : 80089423619 Question Type : MCQ Option Shuffling : Yes

Display Question Number : Yes Is Question Mandatory : No Option Orientation : Vertical

Correct Marks : 1 Wrong Marks : 0

Choose the bronchodilator drug related to xanthine

Options :

1. ✖ Atropine

2. ✖ Orciprenaline

3. ✘ Adrenaline

4. ✔ Theophylline

Question Number : 165 Question Id : 80089423620 Question Type : MCQ Option Shuffling : Yes

Display Question Number : Yes Is Question Mandatory : No Option Orientation : Vertical

Correct Marks : 1 Wrong Marks : 0

Which drug is used in Opioid induced postoperative respiratory depression?

Options :

1. ✘ Amphetamine

2. ✘ Picrotoxin

3. ✔ Doxapram

4. ✘ Camphor

Question Number : 166 Question Id : 80089423621 Question Type : MCQ Option Shuffling : Yes

Display Question Number : Yes Is Question Mandatory : No Option Orientation : Vertical

Correct Marks : 1 Wrong Marks : 0

Histamine is involved as a mediator in which of the following pathological condition?

Options :

1. ✘ Delayed hypersensitivity reaction

2. ✔ Inflammation

3. ✘ Carcinoid syndrome

4. ✘ Variant angina

Question Number : 167 Question Id : 80089423622 Question Type : MCQ Option Shuffling : Yes

Display Question Number : Yes Is Question Mandatory : No Option Orientation : Vertical

Correct Marks : 1 Wrong Marks : 0

Rhabdomyolysis is the adverse effect of _____

Options :

1. ✘ Aspirin

2. ✔ Statins

3. ✘ Isosorbide dinitrite

4. ✘ Digoxin

Question Number : 168 Question Id : 80089423623 Question Type : MCQ Option Shuffling : Yes

Display Question Number : Yes Is Question Mandatory : No Option Orientation : Vertical

Correct Marks : 1 Wrong Marks : 0

What is the mechanism of action of class I antiarrhythmic drugs?

Options :

1. ✔ Na⁺channelblockade

2. ✘ K⁺channelopening

3. ✘ Depression of impulse conduction

4. ✘ Prolongation of effective refractory period

Question Number : 169 Question Id : 80089423624 Question Type : MCQ Option Shuffling : Yes

Display Question Number : Yes Is Question Mandatory : No Option Orientation : Vertical

Correct Marks : 1 Wrong Marks : 0

Dextran is _____

Options :

1. ✘ Crystalloid plasma expander, M.W 40,000

2. ✘ Synthetic, water soluble, hydrophilic polymer and M.W 60,000

3. ✘ Synthetic, water soluble, crystalloid plasma expander

4. ✔ Colloidal plasma expander, M.W 70,000

Question Number : 170 Question Id : 80089423625 Question Type : MCQ Option Shuffling : Yes

Display Question Number : Yes Is Question Mandatory : No Option Orientation : Vertical

Correct Marks : 1 Wrong Marks : 0

Which drug is antagonist of heparin?

Options :

1. ✘ Aspirin

2. ✘ Dicumarol

3. ✘ Dalteparin

4. ✔ Protamine sulfate

Question Number : 171 Question Id : 80089423626 Question Type : MCQ Option Shuffling : Yes

Display Question Number : Yes Is Question Mandatory : No Option Orientation : Vertical

Correct Marks : 1 Wrong Marks : 0

Which Diuretic causes the hyperkalemia?

Options :

1. ✘ Furosemide
2. ✘ Chlorthiazide
3. ✔ Spiranolactone
4. ✘ Mannitol

Question Number : 172 Question Id : 80089423627 Question Type : MCQ Option Shuffling : Yes

Display Question Number : Yes Is Question Mandatory : No Option Orientation : Vertical

Correct Marks : 1 Wrong Marks : 0

Which of the following thyroid inhibitor interferes with peripheral conversion of thyroxine to triiodothyronine?

Options :

1. ✔ Propylthiouracil
2. ✘ Methimazole
3. ✘ Carbimazole
4. ✘ Radioactive iodine

Question Number : 173 Question Id : 80089423628 Question Type : MCQ Option Shuffling : Yes

Display Question Number : Yes Is Question Mandatory : No Option Orientation : Vertical

Correct Marks : 1 Wrong Marks : 0

How Corticosteroids act?

Options :

1. ✘ by binding to G-Protein coupled receptors
2. ✔ by binding to Nuclear receptors
3. ✘ by binding to Ion channels
4. ✘ by binding to Tyrosine kinase linked receptors

Question Number : 174 Question Id : 80089423629 Question Type : MCQ Option Shuffling : Yes

Display Question Number : Yes Is Question Mandatory : No Option Orientation : Vertical

Correct Marks : 1 Wrong Marks : 0

Which drug is non emetic?

Options :

1. ✘ Metoclopramide
2. ✘ Ondansetron
3. ✘ Chlorpromazine
4. ✔ Apomorphine hydrochloride

Question Number : 175 Question Id : 80089423630 Question Type : MCQ Option Shuffling : Yes

Display Question Number : Yes Is Question Mandatory : No Option Orientation : Vertical

Correct Marks : 1 Wrong Marks : 0

Loperamide used as _____

Options :

1. ✓ Antidiarrhoeal
2. ✗ Antacid
3. ✗ Antiemetic
4. ✗ Antispasmodic

Question Number : 176 Question Id : 80089423631 Question Type : MCQ Option Shuffling : Yes

Display Question Number : Yes Is Question Mandatory : No Option Orientation : Vertical

Correct Marks : 1 Wrong Marks : 0

Which antimicrobial agent act interfering with DNA function of the bacteria?

Options :

1. ✗ Chloramphenicol
2. ✓ Ciprofloxacin
3. ✗ Streptomycin
4. ✗ Vancomycin

Question Number : 177 Question Id : 80089423632 Question Type : MCQ Option Shuffling : Yes

Display Question Number : Yes Is Question Mandatory : No Option Orientation : Vertical

Correct Marks : 1 Wrong Marks : 0

Drug of choice in Rickettsial and Chlamydia infection

Options :

1. ✘ Pencillins
2. ✘ Cephalosporins
3. ✘ Aminoglycosides
4. ✔ Tetracyclines

Question Number : 178 Question Id : 80089423633 Question Type : MCQ Option Shuffling : Yes

Display Question Number : Yes Is Question Mandatory : No Option Orientation : Vertical

Correct Marks : 1 Wrong Marks : 0

Which drug is belongs to antibiotics-aminoglycosides?

Options :

1. ✘ Erythromycin
2. ✔ Gentamycin
3. ✘ Vancomycin
4. ✘ Polymyxin

Question Number : 179 Question Id : 80089423634 Question Type : MCQ Option Shuffling : Yes

Display Question Number : Yes Is Question Mandatory : No Option Orientation : Vertical

Correct Marks : 1 Wrong Marks : 0

Rifampicin is effective against _____

Options :

1. ✘ Streptococci
2. ✔ Mycobacterium tuberculosis
3. ✘ Salmonella typhi
4. ✘ Staphylococci

**Question Number : 180 Question Id : 80089423635 Question Type : MCQ Option Shuffling : Yes
Display Question Number : Yes Is Question Mandatory : No Option Orientation : Vertical
Correct Marks : 1 Wrong Marks : 0**

Which drug is not effective for amoebiasis ?

Options :

1. ✘ Ornidazole
2. ✘ Secnidazole
3. ✘ Satranidazole
4. ✔ Mebendazole

**Question Number : 181 Question Id : 80089423636 Question Type : MCQ Option Shuffling : Yes
Display Question Number : Yes Is Question Mandatory : No Option Orientation : Vertical
Correct Marks : 1 Wrong Marks : 0**

Which is Cell cycle specific Anticancer drug?

Options :

1. ✘ Cisplatin
2. ✘ Doxorubicin
3. ✔ Vincristine
4. ✘ Tamoxifen

Question Number : 182 Question Id : 80089423637 Question Type : MCQ Option Shuffling : Yes Display Question Number : Yes Is Question Mandatory : No Option Orientation : Vertical Correct Marks : 1 Wrong Marks : 0

Which is cytotoxic drug ?

Options :

1. ✘ Idoxuridine
2. ✘ Furoxone
3. ✘ Furosemide
4. ✔ 5-Fluorouracil

Question Number : 183 Question Id : 80089423638 Question Type : MCQ Option Shuffling : Yes Display Question Number : Yes Is Question Mandatory : No Option Orientation : Vertical Correct Marks : 1 Wrong Marks : 0

Lugol's solution contains _____

Options :

1. ✘ Sodium iodide and iodine

2. ✘ Potassium iodide and distilled water
3. ✘ Sodium iodide, distilled water and iodine
4. ✔ Potassium iodide, iodine and distilled water

Question Number : 184 Question Id : 80089423639 Question Type : MCQ Option Shuffling : Yes

Display Question Number : Yes Is Question Mandatory : No Option Orientation : Vertical

Correct Marks : 1 Wrong Marks : 0

Which one of the following cannot be considered as changing behaviour with regards to patient's health beliefs?

Options :

1. ✘ Reduction in alcohol consumption
2. ✘ Stop smoking
3. ✘ Uptake of regular exercise
4. ✔ Use of Sunscreen lotion

Question Number : 185 Question Id : 80089423640 Question Type : MCQ Option Shuffling : Yes

Display Question Number : Yes Is Question Mandatory : No Option Orientation : Vertical

Correct Marks : 1 Wrong Marks : 0

Making solution or suspension by adding water or other diluents to a pre-made form of drug in

a drug bottle is called _____

Options :

1. ✘ Compounding
2. ✔ Reconstitution
3. ✘ Solubilization
4. ✘ Dissolution

**Question Number : 186 Question Id : 80089423641 Question Type : MCQ Option Shuffling : Yes
Display Question Number : Yes Is Question Mandatory : No Option Orientation : Vertical
Correct Marks : 1 Wrong Marks : 0**

Which of the following is not a good health triad?

Options :

1. ✘ Physical status
2. ✘ Social status
3. ✘ Mental status
4. ✔ Economic status

**Question Number : 187 Question Id : 80089423642 Question Type : MCQ Option Shuffling : Yes
Display Question Number : Yes Is Question Mandatory : No Option Orientation : Vertical
Correct Marks : 1 Wrong Marks : 0**

How hospital stocked drugs list is selected?

Options :

1. ✘

OTC Drugs

2. ✘ Patient request
3. ✔ Formulary
4. ✘ hospital pharmacy

Question Number : 188 Question Id : 80089423643 Question Type : MCQ Option Shuffling : Yes Display Question Number : Yes Is Question Mandatory : No Option Orientation : Vertical Correct Marks : 1 Wrong Marks : 0

Which one of the following determine the workload of surgical cases except?

Options :

1. ✘ Surgical bed compliment
2. ✘ ALS
3. ✘ Type of surgeries being performed
4. ✔ Plot ratio of the hospital

Question Number : 189 Question Id : 80089423644 Question Type : MCQ Option Shuffling : Yes Display Question Number : Yes Is Question Mandatory : No Option Orientation : Vertical Correct Marks : 1 Wrong Marks : 0

Which of the following is the part of hospital formulary?

Options :

1. ✘ Special information

2. ✓ Information on hospital policies

3. ✘ Drug product listing

4. ✘ Patient information

Question Number : 190 Question Id : 80089423645 Question Type : MCQ Option Shuffling : Yes

Display Question Number : Yes Is Question Mandatory : No Option Orientation : Vertical

Correct Marks : 1 Wrong Marks : 0

How effectively air changes in operation theatre is done by?

Options :

1. ✘ High turbulence displacement air flow

2. ✓ Low turbulence displacement air flow

3. ✘ Mechanical extract of air

4. ✘ Low to high displacement air flow

Question Number : 191 Question Id : 80089423646 Question Type : MCQ Option Shuffling : Yes

Display Question Number : Yes Is Question Mandatory : No Option Orientation : Vertical

Correct Marks : 1 Wrong Marks : 0

Who creates standards for controlled substances?

Options :

1. ✘ The food and drug administration

2. ✘ The national drug code organization
3. ✘ The drug enforcement administration
4. ✔ The world Health Organization

Question Number : 192 Question Id : 80089423647 Question Type : MCQ Option Shuffling : Yes Display Question Number : Yes Is Question Mandatory : No Option Orientation : Vertical Correct Marks : 1 Wrong Marks : 0

Which is not included in Care of disability?

Options :

1. ✘ Disability prevention
2. ✘ Disability Limitation
3. ✘ Rehabilitation
4. ✔ Treatment of Fracture

Question Number : 193 Question Id : 80089423648 Question Type : MCQ Option Shuffling : Yes Display Question Number : Yes Is Question Mandatory : No Option Orientation : Vertical Correct Marks : 1 Wrong Marks : 0

Tenosynovitis is the symptom of _____

Options :

1. ✘ Hepatitis

2. ✘ Tuberculosis

3. ✘ H.pylori infection

4. ✔ Rheumatoid arthritis

Question Number : 194 Question Id : 80089423649 Question Type : MCQ Option Shuffling : Yes

Display Question Number : Yes Is Question Mandatory : No Option Orientation : Vertical

Correct Marks : 1 Wrong Marks : 0

Gum hypertrophy and Hirsutism is seen with which antiepileptic drug

Options :

1. ✘ Valproate

2. ✘ Carbamazepine

3. ✘ Gabapentin

4. ✔ Phenytoin

Question Number : 195 Question Id : 80089423650 Question Type : MCQ Option Shuffling : Yes

Display Question Number : Yes Is Question Mandatory : No Option Orientation : Vertical

Correct Marks : 1 Wrong Marks : 0

C-Reactive protein elevation indicates _____

Options :

1. ✘ Anaemia

2. ✘ Thrombocytopenia
3. ✔ Chronic inflammatory condition
4. ✘ Clot disorder

Question Number : 196 Question Id : 80089423651 Question Type : MCQ Option Shuffling : Yes Display Question Number : Yes Is Question Mandatory : No Option Orientation : Vertical Correct Marks : 1 Wrong Marks : 0

Antacids interact with _____ drug

Options :

1. ✘ Amiodarone
2. ✘ Metronidazole
3. ✘ Quinidine
4. ✔ Tetracyclines

Question Number : 197 Question Id : 80089423652 Question Type : MCQ Option Shuffling : Yes Display Question Number : Yes Is Question Mandatory : No Option Orientation : Vertical Correct Marks : 1 Wrong Marks : 0

Which diuretic is contraindicated in digitalis therapy?

Options :

1. ✘ Mannitol
2. ✔ Thiazide

3. ✘ Itraconazole

4. ✘ Amiloride

Question Number : 198 Question Id : 80089423653 Question Type : MCQ Option Shuffling : Yes

Display Question Number : Yes Is Question Mandatory : No Option Orientation : Vertical

Correct Marks : 1 Wrong Marks : 0

Which one of the following is a synergistic interaction ?

Options :

1. ✘ Salbutamol+ β -Blocker

2. ✘ Benzodiazepines+ Flumazenil

3. ✘ Metaraminol+Phentolamine

4. ✔ NSAID+ Warfarin

Question Number : 199 Question Id : 80089423654 Question Type : MCQ Option Shuffling : Yes

Display Question Number : Yes Is Question Mandatory : No Option Orientation : Vertical

Correct Marks : 1 Wrong Marks : 0

Poisoning of heavy metals are treated with_____

Options :

1. ✘ Infusion of electrolytes

2. ✔ Dimercaprol

3. ✘ Naltrexone

4. ✘ Sodium bicarbonate

Question Number : 200 Question Id : 80089423655 Question Type : MCQ Option Shuffling : Yes
Display Question Number : Yes Is Question Mandatory : No Option Orientation : Vertical

Correct Marks : 1 Wrong Marks : 0

Disulfiram is used in _____

Options :

1. ✘ BZD's addiction

2. ✘ Cocaine addiction

3. ✘ Heroin addiction

4. ✔ Alcohol addiction