

**Directions of Test**

Test Name	Actual MAT 02	Total Questions	200	Total Time	150 Mins
-----------	---------------	-----------------	-----	------------	----------

Section Name	No. of Questions	Marks per Question	Negative Marking
DI	40	1	1/4
GK	40	1	1/4
Verbal	40	1	1/4
Quant	43	1	1/4
Reasoning	37	1	1/4

**Section : DI**

**DIRECTION for the question:** The following question consists of a question and two statements I and II. Decide whether the data provided in the statements are sufficient to answer the question.

**Question No. : 1**

Who is the slowest among the three workers P, Q and R?

Statements:

- I. P and Q together fence a garden of perimeter 800 m in 11 hours.  
 II. P, Q and R together can fence a garden of perimeter 800 m in 5 hours.

Choose the correct Option:

- A) If the data in both the statements I and II are required to answer the question  
 B) If the data in statement II alone are sufficient to answer the question while the data in statement I alone are not sufficient to answer the question  
 C) If the data in statement I alone are sufficient to answer the question, while the data in statement II alone are not sufficient to answer the question  
 D) If the data even in both the statements I and II together are not sufficient to answer the question

**DIRECTION for the question:** The following question consists of a question and two statements I and II. Decide whether the data provided in the statements are sufficient to answer the question.

**Question No. : 2**

The aggregate marks of three students X, Y and Z was 2025. What were the marks of each of the students?

Statements:

- I. Y and Z together secured 1324 marks.  
 II. X and Z together secured 1355 marks.

Choose the correct option:

- A) If the data in both the statements I and II are required to answer the question  
 B) If the data in statement II alone are sufficient to answer the question while the data in statement I alone are not sufficient to answer the question  
 C) If the data in statement I alone are sufficient to answer the question, while the data in statement II alone are not sufficient to answer the question  
 D) If the data even in both the statements I and II together are not sufficient to answer the question

**DIRECTION for the question:** The following question consists of a question and two statements I and II. Decide whether the data provided in the statements are sufficient to answer the question.

**Question No. : 3**

What is the ratio of the number of female voters to the number of male voters in a booth?

*Statements:*

I. The number of voters is 993 and the number of female voters is 368 in the booth.

II. The number of female voters is more than  $\frac{1}{4}$ <sup>th</sup> of total voters in the booth.

Choose the correct option:

- A) If the data in both the statements I and II are required to answer the question
- B) If the data in statement II alone are sufficient to answer the question while the data in statement I alone are not sufficient to answer the question
- C) If the data in statement I alone are sufficient to answer the question, while the data in statement II alone are not sufficient to answer the question
- D) If the data even in both the statements I and II together are not sufficient to answer the question

***DIRECTION for the question:*** The following question consists of a question and two statements I and II. Decide whether the data provided in the statements are sufficient to answer the question.

**Question No. : 4**

Does the speed of the train exceed 80 km/hr?

*Statements:*

I. The train crosses a pole in 8 sec.

II. The train takes 12 sec to cross a 150 m long bridge.

Choose the correct option:

- A) If the data in both the statements I and II are required to answer the question
  - B) If the data in statement II alone are sufficient to answer the question while the data in statement I alone are not sufficient to answer the question
  - C) If the data in statement I alone are sufficient to answer the question, while the data in statement II alone are not sufficient to answer the question
  - D) If the data even in both the statements I and II together are not sufficient to answer the question
- 

***DIRECTION for the question:*** The following question consists of a question and two statements I and II. Decide whether the data provided in the statements are sufficient to answer the question.

**Question No. : 5**

What is the angle between 2 hands of a watch?

*Statements:*

I. 20 min earlier the angle was  $15^{\circ}$ .

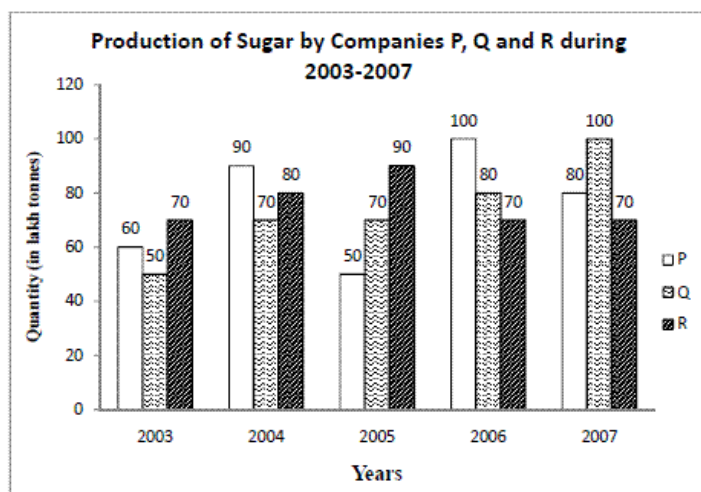
II. The min hand will reach 6 in around 10 min.

Choose the correct option:

- A) If the data in both the statements I and II are required to answer the question
- B) If the data in statement II alone are sufficient to answer the question while the data in statement I alone are not sufficient to answer the question
- C) If the data in statement I alone are sufficient to answer the question, while the data in statement II alone are not sufficient to answer the question
- D) If the data even in both the statements I and II together are not sufficient to answer the question

**Question No. : 6**

**DIRECTIONS for the question:** The following bar graph indicates the production of sugar (in lakh tonnes) by three different sugar companies P, Q and R over the years 2003 to 2007.

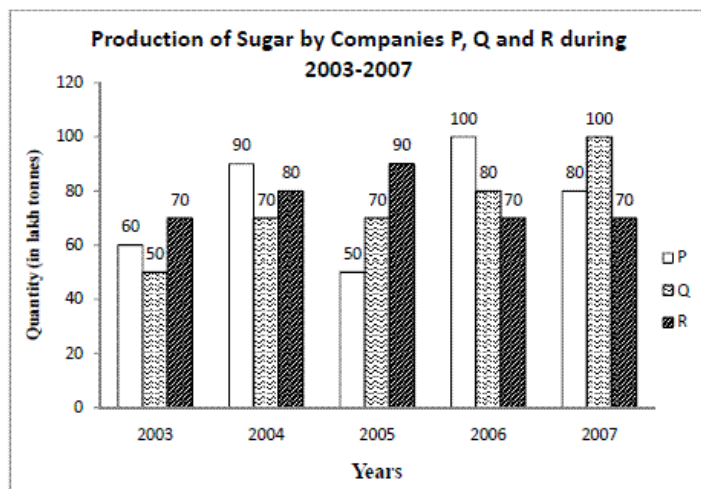


The percentage of production of Company R to production of Company Q is the maximum in the year

- A) 2005    B) 2004    C) 2003    D) 2006    E) None of these

**Question No. : 7**

**DIRECTIONS for the question:** The following bar graph indicates the production of sugar (in lakh tonnes) by three different sugar companies P, Q and R over the years 2003 to 2007.

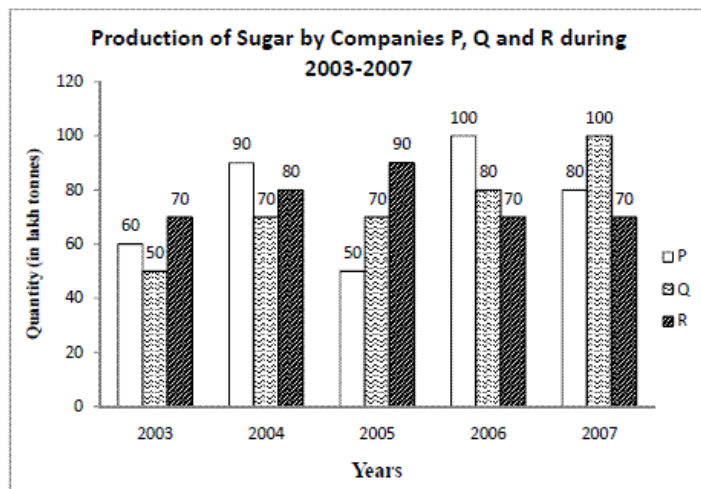


The ratio of the average production of Company P during the years 2005 to 2007 to the average production of Company Q for the same period is

- A) 15 : 17    B) 23 : 25    C) 27 : 29    D) 29 : 27    E) 25 : 23

**Question No. : 8**

**DIRECTIONS for the question:** The following bar graph indicates the production of sugar (in lakh tonnes) by three different sugar companies P, Q and R over the years 2003 to 2007.

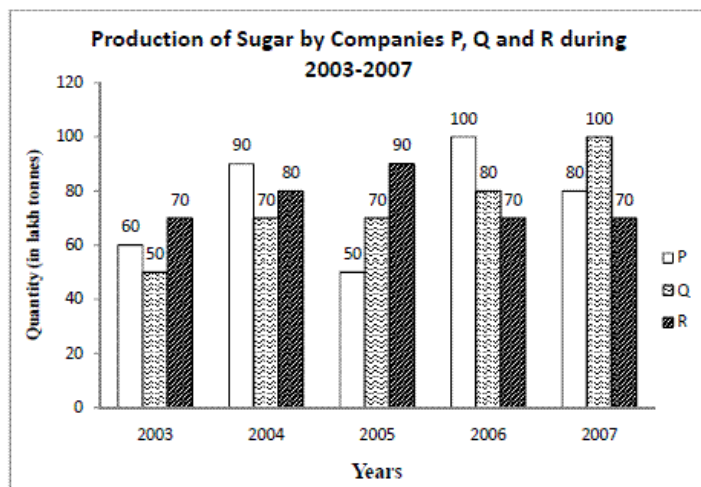


The percentage increase in production of Company Q from the year 2003 to the year 2007 is

- A) 60%   B) 80%   C) 90%   D) 100%   E) None of these

#### Question No. : 9

**DIRECTIONS for the question:** The following bar graph indicates the production of sugar (in lakh tonnes) by three different sugar companies P, Q and R over the years 2003 to 2007.

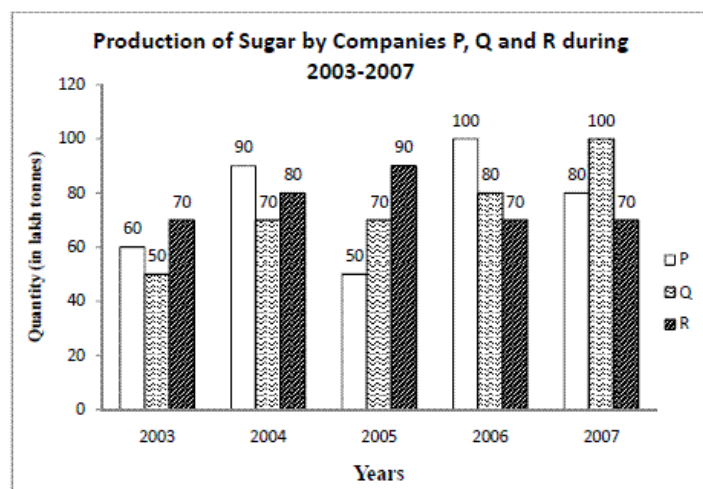


The average production over the years 2003 – 2007 was maximum for the Company(ies)

- A) R   B) Q   C) P   D) P and R   E) None of these

#### Question No. : 10

**DIRECTIONS for the question:** The following bar graph indicates the production of sugar (in lakh tonnes) by three different sugar companies P, Q and R over the years 2003 to 2007.



The percentage rise or fall in production of Company Q as compared to the previous year is the maximum in the year

- A) 2006    B) 2005    C) 2004    D) 2007    E) None of these

### Question No. : 11

**DIRECTIONS for the question:** Study the table below to answer the following question.

#### Rate of Interest, Dividend Payout Ratio and the Retained Earnings of Five Companies

Company	Interest (Rs. 000)	Rate of Interest (%)	Dividend Payout Ratio (%)	Retained Earnings (Rs. Lakh)
A	234	18	22.50	155
B	576	24	19.60	402
C	129.6	16	8.75	365
D	144	9	32.50	270
E	180	15	28.00	216

Profit earned is either paid out as dividend or ploughed back in business as retained earnings. Interest is paid on borrowings.

What is the sum of profits made by Companies A & B?

- A) Rs. 700 lakh    B) Rs. 500 lakh    C) Rs. 600 lakh    D) Rs. 800 lakh

### Question No. : 12

**DIRECTIONS for the question:** Study the table below to answer the following question.

#### Rate of Interest, Dividend Payout Ratio and the Retained Earnings of Five Companies

Company	Interest (Rs. 000)	Rate of Interest (%)	Dividend Payout Ratio (%)	Retained Earnings (Rs. Lakh)
A	234	18	22.50	155
B	576	24	19.60	402
C	129.6	16	8.75	365
D	144	9	32.50	270
E	180	15	28.00	216

Profit earned is either paid out as dividend or ploughed back in business as retained earnings. Interest is paid on borrowings.

What is the sum of the borrowings of all five companies?

- A) Rs. 14.6 crore    B) Rs. 146 lakh    C) Rs. 14.6 lakh    D) None of these

### Question No. : 13

**DIRECTIONS for the question:** Study the table below to answer the following question.

**Rate of Interest, Dividend Payout Ratio and the Retained Earnings of Five Companies**

Company	Interest (Rs. 000)	Rate of Interest (%)	Dividend Payout Ratio (%)	Retained Earnings (Rs. Lakh)
A	234	18	22.50	155
B	576	24	19.60	402
C	129.6	16	8.75	365
D	144	9	32.50	270
E	180	15	28.00	216

*Profit earned is either paid out as dividend or ploughed back in business as retained earnings. Interest is paid on borrowings.*

By how much do the borrowings of Company B exceed that of Company A?

- A) Rs. 1,000,000    B) Rs. 1,210,000    C) Rs. 1,320,000    D) Rs. 1,100,000

**Question No. : 14**

**DIRECTIONS for the question:** Study the table below to answer the following question.

**Rate of Interest, Dividend Payout Ratio and the Retained Earnings of Five Companies**

Company	Interest (Rs. 000)	Rate of Interest (%)	Dividend Payout Ratio (%)	Retained Earnings (Rs. Lakh)
A	234	18	22.50	155
B	576	24	19.60	402
C	129.6	16	8.75	365
D	144	9	32.50	270
E	180	15	28.00	216

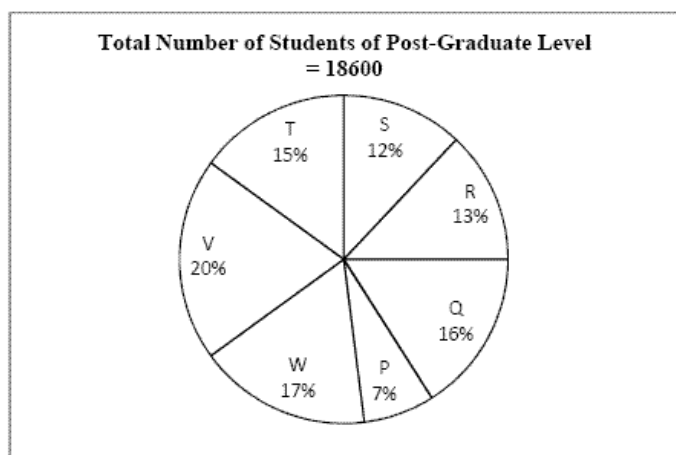
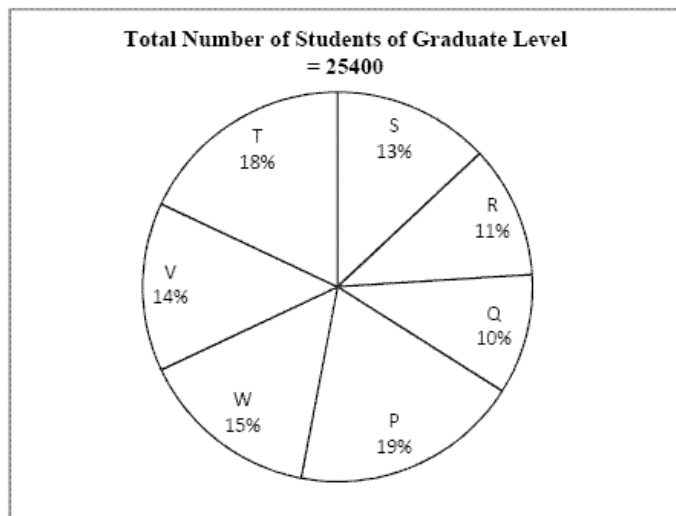
*Profit earned is either paid out as dividend or ploughed back in business as retained earnings. Interest is paid on borrowings.*

By how much does the dividend paid by Company D exceed that of Company A?

- A) Rs. 320 lakh    B) Rs. 85 lakh    C) Rs. 32 lakh    D) Rs. 230 lakh

**Question No. : 15**

**DIRECTIONS for the question:** The following pie-charts show the distribution of students of graduate and post-graduate levels in seven different institutes namely P, Q, R, S, T, V and W.

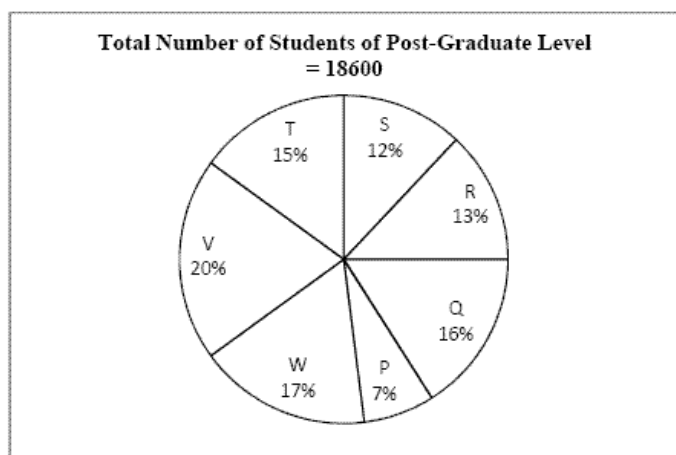
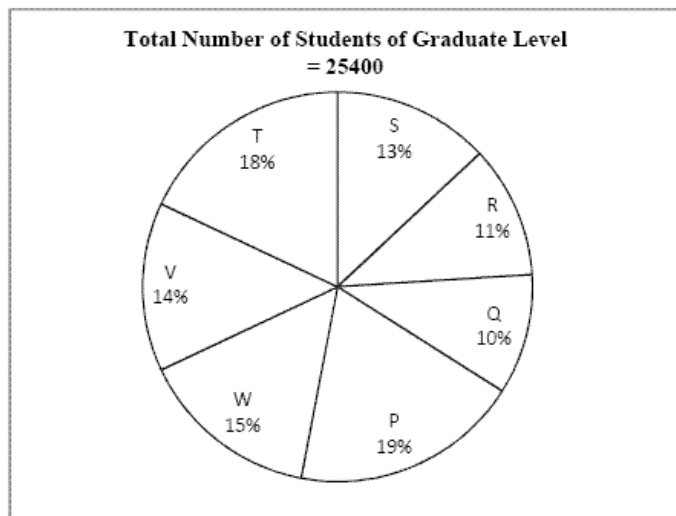


How many students of institutes P and W are studying at graduate level?

- A) 9046    B) 7486    C) 8636    D) 9256    E) 7898

**Question No. : 16**

**DIRECTIONS for the question:** The following pie-charts show the distribution of students of graduate and post-graduate levels in seven different institutes namely P, Q, R, S, T, V and W.



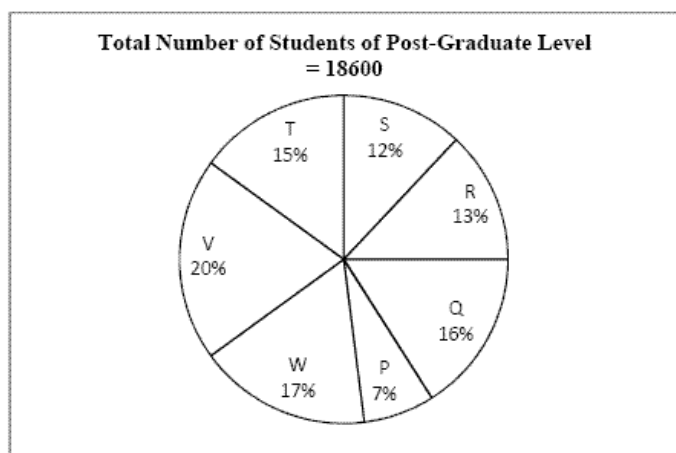
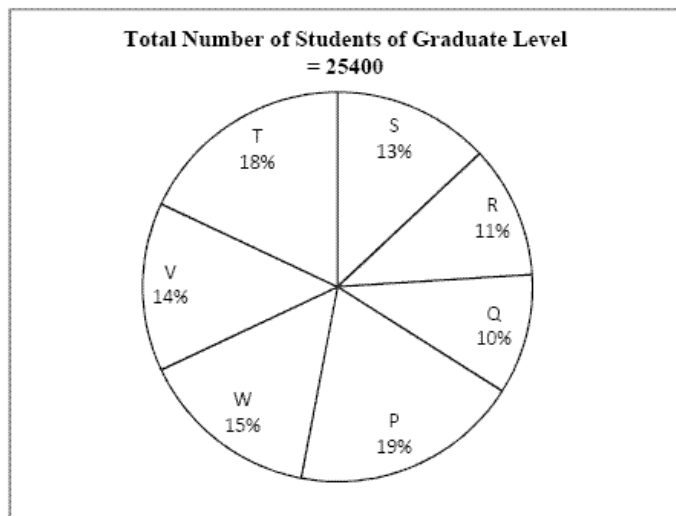
Total number of students studying at post-graduate level from institutes T and V is

- A) 6510   B) 6070   C) 6890   D) 6230   E) 6650

**Question No. : 17**



**DIRECTIONS for the question:** The following pie-charts show the distribution of students of graduate and post-graduate levels in seven different institutes namely P, Q, R, S, T, V and W.

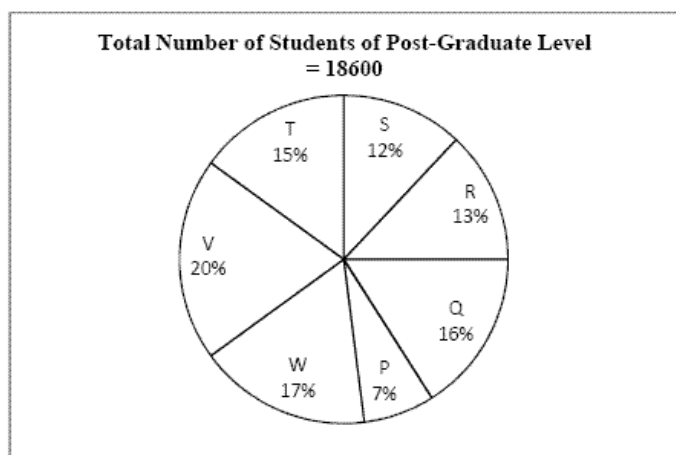
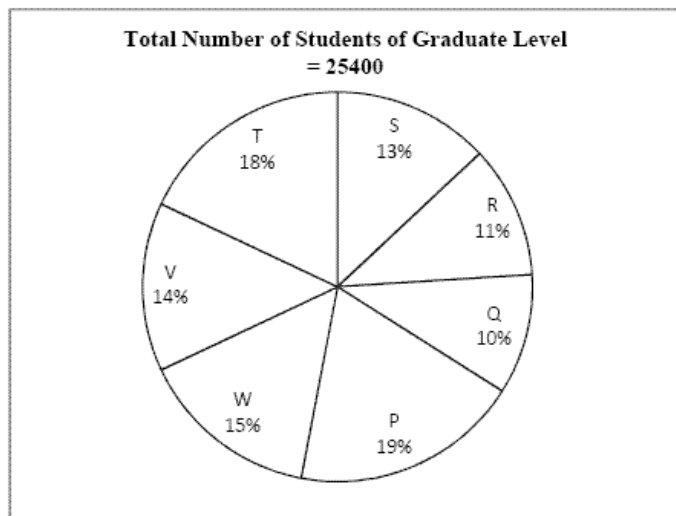


What is the total number of students studying at post-graduate and graduate levels in institute S?

- A) 5764    B) 5534    C) 5084    D) 5246    E) 5142

**Question No. : 18**

**DIRECTIONS for the question:** The following pie-charts show the distribution of students of graduate and post-graduate levels in seven different institutes namely P, Q, R, S, T, V and W.

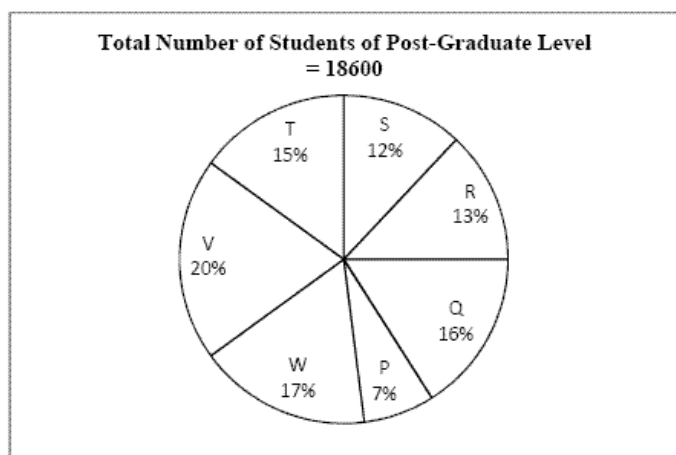
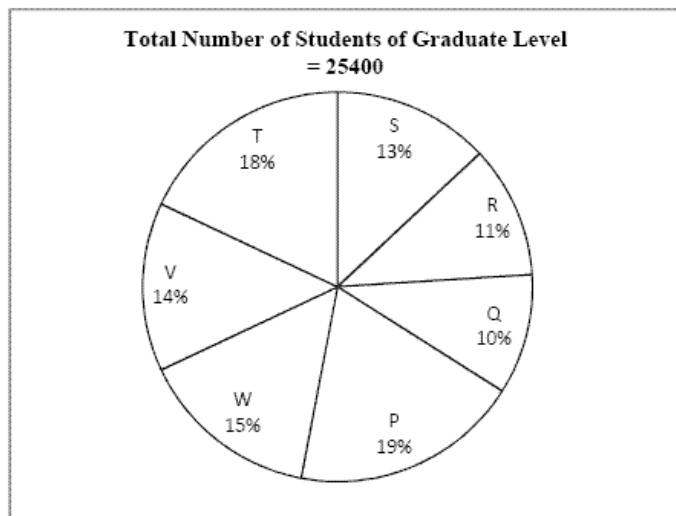


What is the nearest ratio between the number of students studying at post-graduate and graduate levels in institute R?

- A) 4 : 5    B) 6 : 7    C) 3 : 4    D) 13 : 15    E) 9 : 7

**Question No. : 19**

**DIRECTIONS for the question:** The following pie-charts show the distribution of students of graduate and post-graduate levels in seven different institutes namely P, Q, R, S, T, V and W.



What is the nearest ratio between the number of students studying at post-graduate level in institute V and graduate level in institute T?

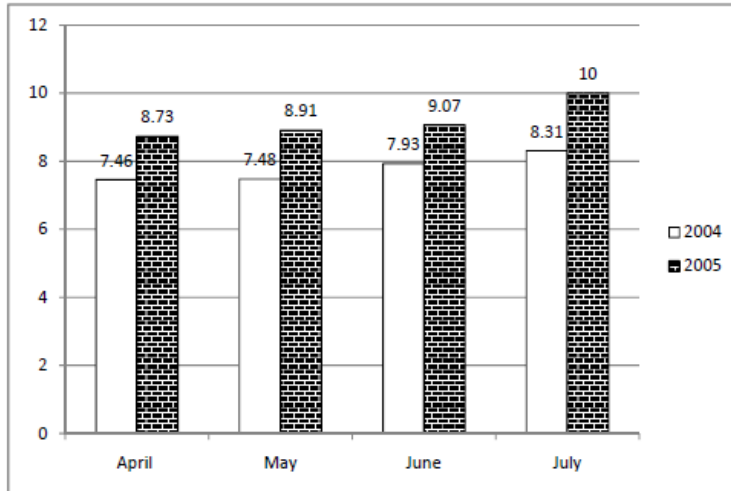
- A) 6 : 7    B) 8 : 9    C) 4 : 5    D) 3 : 4    E) 1 : 2

**Question No. : 20**

**DIRECTION for the question:** Study the following table and bar graph to answer the question.

**Air India's Performance Indicators**

	2001-02	2002-03	2003-04	2004-05
Total revenue (Rs. crore)	893.88	925.46	1023.95	1205.11
Net Profit/(Loss) (Rs. crore)	66.00	30.16	43.41	3.41
Available tone kms (million)	2842.565	2919.512	3180.207	3176.00
Capacity utilization (million)	2109.959	2206.287	2386.111	2372.300
Overall load factor (%)	74.2	75.6	75.0	74.7
Passenger load factor	56.0	68.6	69.3	66.4



**Air India's Yield per Tonne km (Rs.)**

Between 2004 and 2005, the increase in yield per tonne km in April as a ratio to the increase in yield per tonne km in July is closest to which of the following?

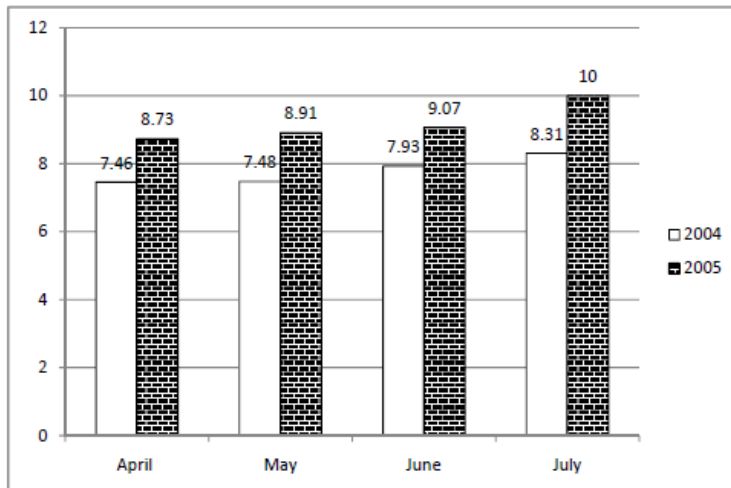
- A) 4 : 7    B) 5 : 7    C) 3 : 8    D) 7 : 4

**Question No. : 21**

**DIRECTION for the question:** Study the following table and bar graph to answer the question.

**Air India's Performance Indicators**

	2001-02	2002-03	2003-04	2004-05
Total revenue (Rs. crore)	893.88	925.46	1023.95	1205.11
Net Profit/(Loss) (Rs. crore)	66.00	30.16	43.41	3.41
Available tone kms (million)	2842.565	2919.512	3180.207	3176.00
Capacity utilization (million)	2109.959	2206.287	2386.111	2372.300
Overall load factor (%)	74.2	75.6	75.0	74.7
Passenger load factor	56.0	68.6	69.3	66.4



**Air India's Yield per Tonne km (Rs.)**

Air India's average profit from 2001 – 02 to 2004 – 05 was

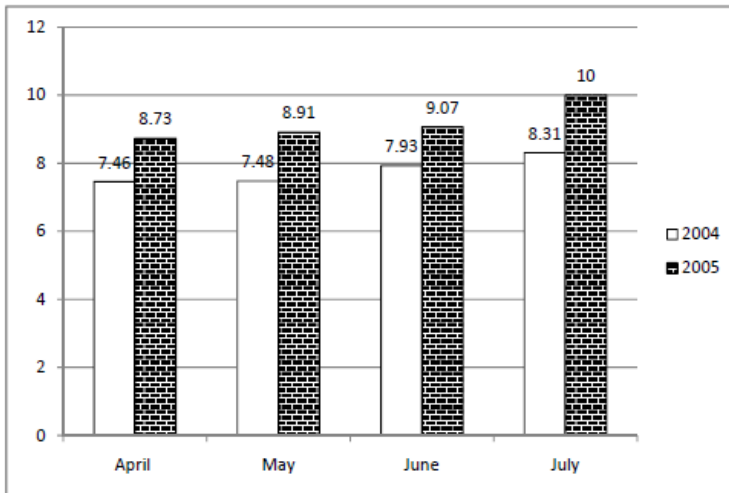
- A) Rs. 24015 lakh    B) Rs. 3575 lakh    C) Rs. 3404 lakh    D) None of these

**Question No. : 22**

**DIRECTION for the question:** Study the following table and bar graph to answer the question.

**Air India's Performance Indicators**

	2001-02	2002-03	2003-04	2004-05
Total revenue (Rs. crore)	893.88	925.46	1023.95	1205.11
Net Profit/(Loss) (Rs. crore)	66.00	30.16	43.41	3.41
Available tone kms (million)	2842.565	2919.512	3180.207	3176.00
Capacity utilization (million)	2109.959	2206.287	2386.111	2372.300
Overall load factor (%)	74.2	75.6	75.0	74.7
Passenger load factor	56.0	68.6	69.3	66.4



**Air India's Yield per Tonne km (Rs.)**

Air India's yield per tonne km from April to May 2004 increased by

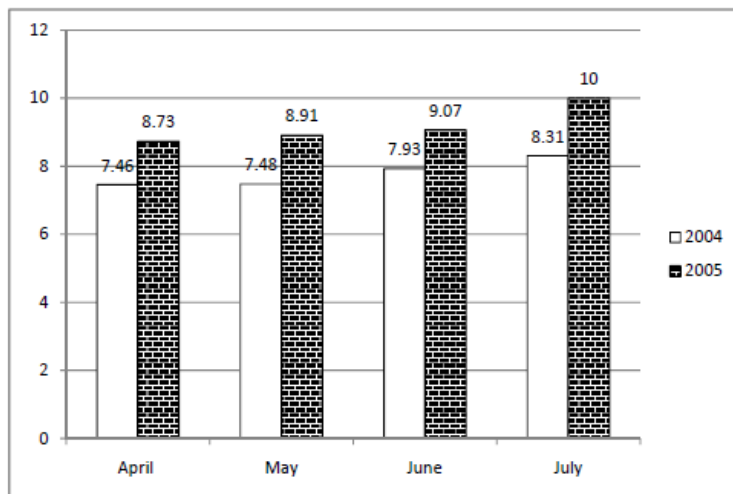
- A) 0.35%   B) 0.26%   C) 2.6%   D) 0.21%

**Question No. : 23**

**DIRECTION for the question:** Study the following table and bar graph to answer the question.

**Air India's Performance Indicators**

	2001-02	2002-03	2003-04	2004-05
Total revenue (Rs. crore)	893.88	925.46	1023.95	1205.11
Net Profit/(Loss) (Rs. crore)	66.00	30.16	43.41	3.41
Available tone kms (million)	2842.565	2919.512	3180.207	3176.00
Capacity utilization (million)	2109.959	2206.287	2386.111	2372.300
Overall load factor (%)	74.2	75.6	75.0	74.7
Passenger load factor	56.0	68.6	69.3	66.4



**Air India's Yield per Tonne km (Rs.)**

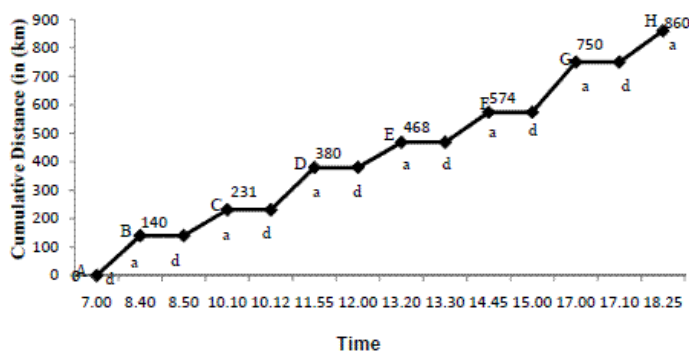
The average increase in the passenger load factor over the four years was

- A) 3.466%   B) 2.6%   C) 1.2%   D) None of these

#### Question No. : 24

**DIRECTIONS for the question:** A train runs through cities A, B, C, D, E, F, G and H. The line graph indicates the time schedule of the train including times of arrival and departure.

**Train Schedule**



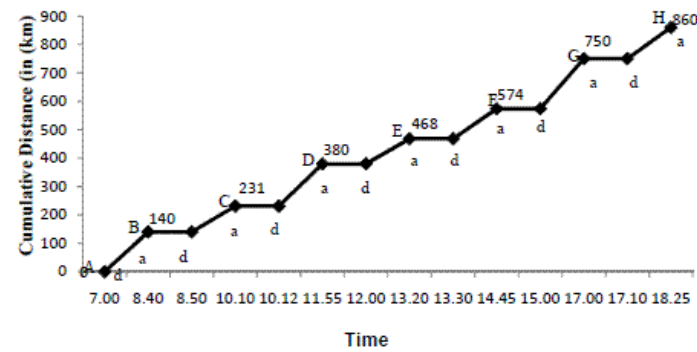
The overall average speed of the entire trip excluding stoppage time is nearly

- A) 46 km/h   B) 75 km/h   C) 81 km/h   D) 65 km/h   E) None of these

#### Question No. : 25

DIRECTIONS for the question: A train runs through cities A, B, C, D, E, F, G and H. The line graph indicates the time schedule of the train including times of arrival and departure.

Train Schedule



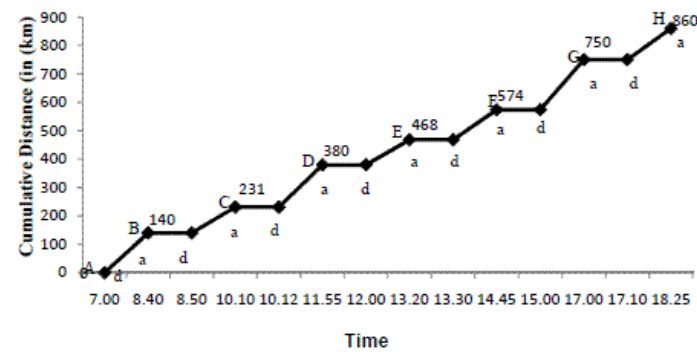
What percentage of time of the entire trip was actually spend traveling between the cities?

- A) 76%    B) 42.4%    C) 92.4%    D) 2.4%    E) None of these

Question No. : 26

DIRECTIONS for the question: A train runs through cities A, B, C, D, E, F, G and H. The line graph indicates the time schedule of the train including times of arrival and departure.

Train Schedule



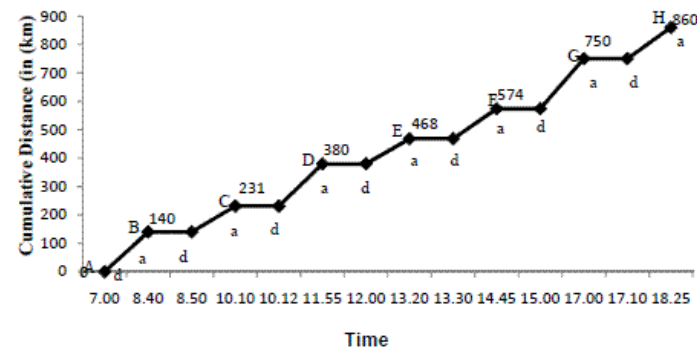
The total stoppage time at the cities in the first half and second half of the total distance is in the ratio

- A) 2 : 1    B) 1 : 3    C) 3 : 1    D) 1 : 2    E) None of these

Question No. : 27

DIRECTIONS for the question: A train runs through cities A, B, C, D, E, F, G and H. The line graph indicates the time schedule of the train including times of arrival and departure.

Train Schedule



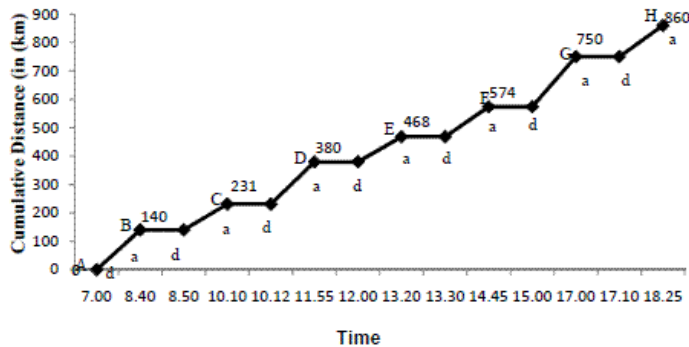
Between how many pairs of consecutive stations does the speed run below the overall average speed of the entire trip (Time is calculated from arrival to arrival)?

- A) 3    B) 2    C) 1    D) 4    E) None of these

**Question No. : 28**

**DIRECTIONS** for the question: A train runs through cities A, B, C, D, E, F, G and H. The line graph indicates the time schedule of the train including times of arrival and departure.

**Train Schedule**

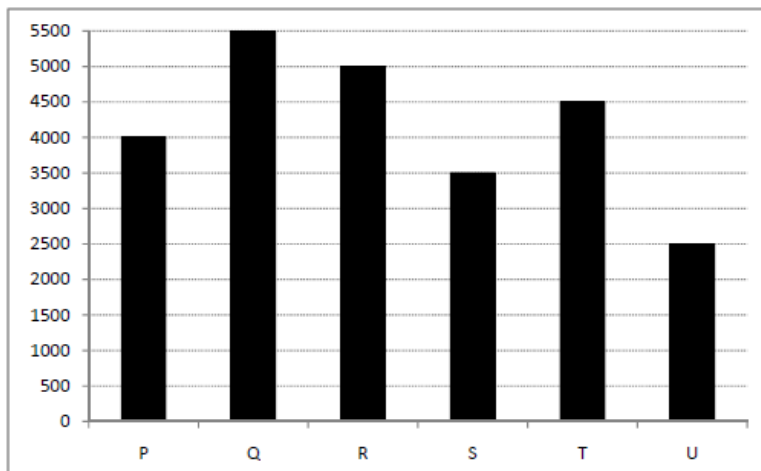


If the train stops at the each of the cities for 56% more time than what is at present, then at what time will it arrive at city H if after departing from city A as per schedule?

- A) 18.15    B) 20.16    C) 19.02    D) 18.54    E) None of these

**Question No. : 29**

**DIRECTIONS** for the question: Study the graph carefully to answer the following question. It provides data about the number of people contributing from different cities for a cause.



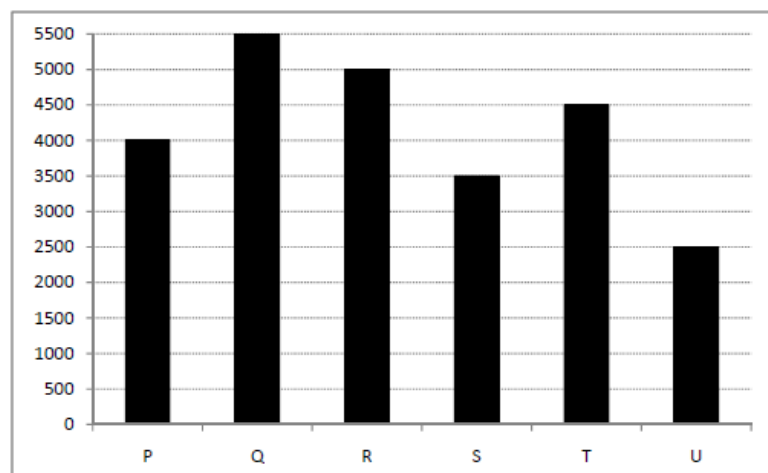
How many more people from city S would have made the ratio 11:9 between the number of people contributing from cities S and T respectively?

- A) 1500    B) 2000    C) 5500    D) 3500    E) None of the above

**Question No. : 30**



**DIRECTIONS for the question:** Study the graph carefully to answer the following question. It provides data about the number of people contributing from different cities for a cause.

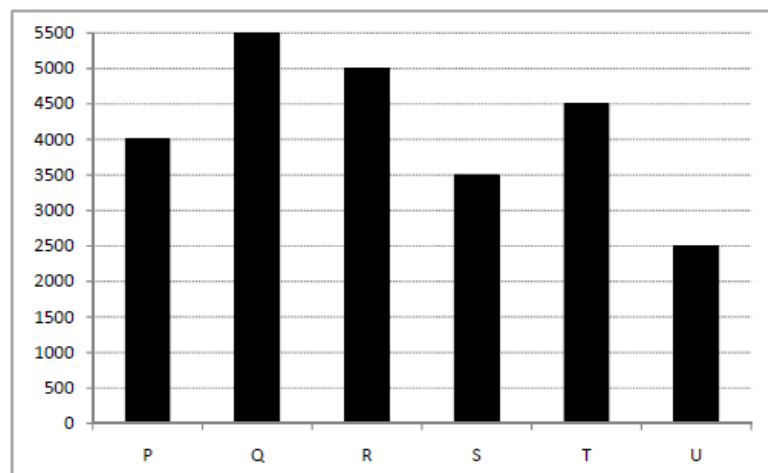


Number of people contributing from Q and U together form what percent of the total number of people contributing from all the given cities?

- A) 30%   B) 36%   C) 32%   D) 38%   E) None of the above

**Question No. : 31**

**DIRECTIONS for the question:** Study the graph carefully to answer the following question. It provides data about the number of people contributing from different cities for a cause.

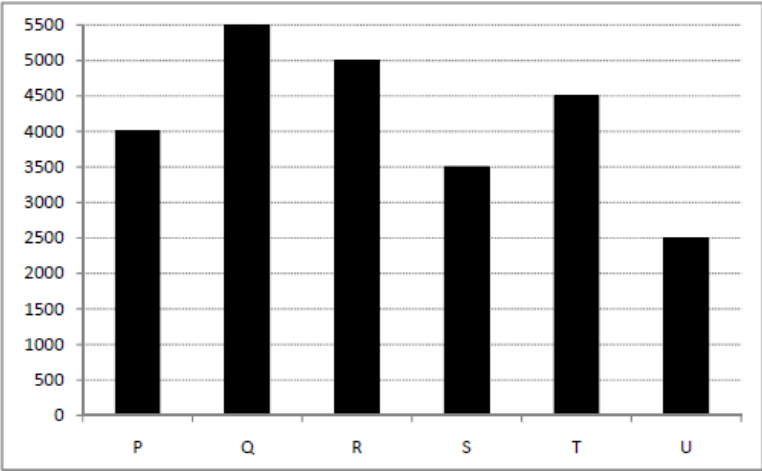


Number of people contributing from how many cities form less than 18% of the total number of people contributing from all the cities together?

- A) 3   B) 4   C) 2   D) 1   E) None of the above

**Question No. : 32**

**DIRECTIONS for the question:** Study the graph carefully to answer the following question. It provides data about the number of people contributing from different cities for a cause.

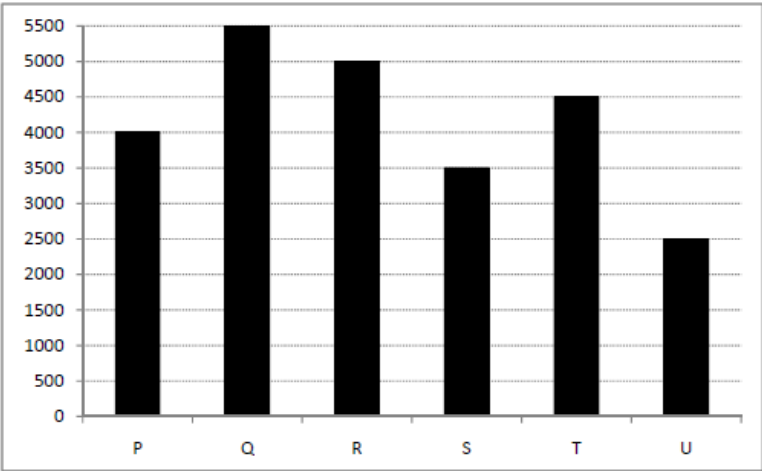


Approximately by what percent number of people contributing from city T are more in comparison to the people contributing from city S?

- A) 38%    B) 18%    C) 22%    D) 29%    E) None of the above

**Question No. : 33**

**DIRECTIONS for the question:** Study the graph carefully to answer the following question. It provides data about the number of people contributing from different cities for a cause.



What is the respective ratio between numbers of people contributing from City P to those from city R?

- A) 4 : 5    B) 4 : 7    C) 7 : 4    D) 5 : 9    E) None of the above

**DIRECTION for the question:** The question consists of two quantities, one in column A and one in Column B. Compare the two quantities.

**Question No. : 34**

**Column A**

The average speed needed to drive 350 km in 5 hrs.

**Column B**

The average speed needed to drive 780 km in 12 hrs.

- A) If the two quantities are equal    B) If the quantity in Column B is greater    C) If the quantity in Column A is greater  
D) If the relationship cannot be determined from the information given

**DIRECTION for the question:** The question consists of two quantities, one in column A and one in Column B. Compare the two quantities.

**Question No. : 35**

**Column A**  
 $4\sqrt{2}$

**Column B**  
 $\sqrt{35}$

- A) If the two quantities are equal    B) If the quantity in Column B is greater    C) If the quantity in Column A is greater  
D) If the relationship cannot be determined from the information given

**DIRECTION for the question:** The question consists of two quantities, one in column A and one in Column B. Compare the two quantities.

**Question No. : 36**

**Column A**  
 $3x - (4 + x)$

**Column B**  
 $2x - 4$

- A) If the two quantities are equal    B) If the quantity in Column B is greater    C) If the quantity in Column A is greater  
D) If the relationship cannot be determined from the information given

**DIRECTION for the question:** The question consists of two quantities, one in column A and one in Column B. Compare the two quantities.

**Question No. : 37**

**Column A**  
Twice the sum of 14 and b, divided by 2

**Column B**  
 $b + 14$

- A) If the two quantities are equal    B) If the quantity in Column B is greater    C) If the quantity in Column A is greater  
D) If the relationship cannot be determined from the information given

**DIRECTION for the question:** The question consists of two quantities, one in column A and one in Column B. Compare the two quantities.

**Question No. : 38**

**Column A**  
The area of a square whose sides have a length of  $3x$

**Column B**  
The area of a rectangle with length  $2x$  and width  $x$

- A) If the two quantities are equal    B) If the quantity in Column B is greater    C) If the quantity in Column A is greater  
D) If the relationship cannot be determined from the information given

**DIRECTION for the question:** The question consists of two quantities, one in column A and one in Column B. Compare the two quantities.

**Question No. : 39**

**Column A**  
The surface area of a cube with an edge 4 inch long

**Column B**  
The surface area of a regular pyramid with a length of 5 inch

- A) If the two quantities are equal    B) If the quantity in Column B is greater    C) If the quantity in Column A is greater  
D) If the relationship cannot be determined from the information given

**DIRECTION for the question:** The question consists of two quantities, one in column A and one in Column B. Compare the two quantities.

**Question No. : 40**

**Column A**  
The volume of a cylinder if the radius is doubled

**Column B**  
The volume of a cylinder if the height is doubled

- A) If the two quantities are equal    B) If the quantity in Column B is greater    C) If the quantity in Column A is greater  
D) If the relationship cannot be determined from the information given

**Section : GK**

**DIRECTIONS for the question:** Mark the best option:

**Question No. : 41**

Which international tennis player failed a dope test at the Australian Open 2016 for a drug Meldonium which became a banned substance under the WADA code this year?

- A) Martina Hingis   B) Maria Sharapova   C) Ana Ivanovic   D) Venus Williams

**DIRECTIONS for the question:** Mark the best option:

**Question No. : 42**

Which team has won the 70th edition of Santosh Trophy Football Championships title 2016?

- A) Maharashtra   B) Services   C) Railways   D) West Bengal
- 

**DIRECTIONS for the question:** Mark the best option:

**Question No. : 43**

Tourism campaign titled 'New Worlds' of which state has won the prestigious 'Golden City Gate Award' at the Internationale Tourismus-Börse Berlin (ITB-Berlin) 2016?

- A) Uttar Pradesh   B) Gujarat   C) Kerala   D) Telangana

**DIRECTIONS for the question:** Mark the best option:

**Question No. : 44**

Which of the following is the oldest Central Para Military force in India?

- A) CISF   B) CRPF   C) BSF   D) Assam Rifles
- 

**DIRECTIONS for the question:** Mark the best option:

**Question No. : 45**

Who among the following has been elected as the first civilian president of Myanmar in 53 years in March 2016?

- A) Htin Kyaw   B) Henry Van Thio   C) Myint Swe   D) None of these

**DIRECTIONS for the question:** Mark the best option:

**Question No. : 46**

In which one of the following cities, the Iron Fist 2016 exercise (air power demonstration) was conducted by the Indian Air Force (IAF) in March 2016?

- A) Gujarat   B) Punjab   C) Maharashtra   D) Rajasthan
- 

**DIRECTIONS for the question:** Mark the best option:

**Question No. : 47**

What was the name of the Internet pioneer and e-mail inventor, who has passed away in Washington, USA at the age of 74 years?

- A) Anita Brookner   B) Raymond Tomlinson   C) Lloyd Stowell Shapley   D) George Henry Martin

**DIRECTIONS for the question:** Mark the best option:

**Question No. : 48**

Which one of the following teams won the third season of Star Sports Pro Kabaddi League (PKL) in March 2016?

- A) U Mumba    B) Patna Pirates    C) Bengal Warriors    D) Dabang Delhi
- 

**DIRECTIONS for the question:** Mark the best option:

**Question No. : 49**

Which one of the following nationalized banks from India was granted operating licence by Myanmar Government along with three other Asian banks?

- A) Indian Overseas Bank    B) Bank of Baroda    C) State Bank of India    D) Central Bank of India

**DIRECTIONS for the question:** Mark the best option:

**Question No. : 50**

Which state/UT is first in the country to launch the Human Papillomavirus (HPV) vaccine in March 2016 as a public health programme for school children?

- A) Delhi    B) Manipur    C) Uttarakhand    D) Kerala
- 

**DIRECTIONS for the question:** Mark the best option:

**Question No. : 51**

Which retail company has tied up with Tata's Trent to retail its FMCG products through the later's Star Bazar outlets?

- A) Aditya Birla Group    B) Future Group    C) Reliance Retail Ltd    D) Bharti Retail Ltd

**DIRECTIONS for the question:** Mark the best option:

**Question No. : 52**

Which country has second referendum in March 2016 on whether to change their national flag from a design which features the British Union Jack to one which features a native silver fern?

- A) New Zealand    B) Canada    C) Australia    D) South Africa
- 

**DIRECTIONS for the question:** Mark the best option:

**Question No. : 53**

Who among the following shooter clinched the gold in 50 m pistol event at the ISSF World Cup in Bangkok in March 2016?

- A) Heena Sidhu    B) Jitu Rai    C) Sunil Gurang    D) Vijay Kumar

**DIRECTIONS for the question:** Mark the best option:

**Question No. : 54**

Which one of the following IT companies has launched the 'ENVY13' a computer notebook?

- A) Samsung Tech    B) Lenovo Tech    C) HCL    D) Hewlett Packard
- 

**DIRECTIONS for the question:** Mark the best option:

**Question No. : 55**

According to the Chinese Zodiac, 2016 is the year of the \_\_\_\_\_, which has started from 08 February 2016.

- A) Rabbit    B) Dragon    C) Monkey    D) Snake

**DIRECTIONS for the question:** Mark the best option:

**Question No. : 56**

Which among the following group of nations has successfully launched 'ExoMars 2016', an unmanned spacecraft to search for biosignatures on Mars?

- A) Europe and Russia   B) The USA and South America   C) The UK and China   D) Brazil and Japan
- 

**DIRECTIONS for the question:** Mark the best option:

**Question No. : 57**

Railways has announced in the railway budget 2016-17, the launch of a new train named\_\_\_\_\_, having fully air-conditioned third AC services with an optional services for meals for reserved passengers.

- A) Uday   B) Hamsafar   C) Tejas   D) Antyodaya Express

**DIRECTIONS for the question:** Mark the best option:

**Question No. : 58**

Who among the following has been selected for the Padma Vibhushan 2016 in the field of Medicine-Oncology?

- A) Vishwanathan Shanta   B) Ramoji Rao   C) Vasudev Kalkunte Aatre   D) Avinash Dixit
- 

**DIRECTIONS for the question:** Mark the best option:

**Question No. : 59**

The Govt. of India has approved in-principle for setting up Laser Interferometer Gravitational Wave Observatory (LIGO) in India with LIGO Laboratory from

- A) Germany   B) France   C) The USA   D) Japan

**DIRECTIONS for the question:** Mark the best option:

**Question No. : 60**

'Setu Bharatam' launched in March 2016, is an ambitious programme of Govt. of India with an investment of \_\_\_\_\_ to build bridges for safe and seamless travel on National Highways.

- A) Rs. 50,000crore   B) Rs. 45,000crore   C) Rs. 40,000crore   D) Rs. 35,000crore
- 

**DIRECTIONS for the question:** Mark the best option:

**Question No. : 61**

Who has been elected as the new President of Federation Internationale de Football Association (FIFA) in 2016?

- A) Sheikh Salman   B) Prince Ali   C) Gianni Infantino   D) None of these

**DIRECTIONS for the question:** Mark the best option:

**Question No. : 62**

Mathematician Andrew J Wiles who won the prestigious 2016 Abel Prize given by the Norwegian Academy of Sciences and Letters belongs to

- A) Finland   B) The UK   C) Canada   D) Sweden
- 

**DIRECTIONS for the question:** Mark the best option:

**Question No. : 63**

Capital Local Area Bank (CLAB) Limited which became the first financial entity in India to get Small Financial Bank Licence by the Reserve Bank of India (RBI) is from

- A) Uttar Pradesh   B) Rajasthan   C) Andhra Pradesh   D) Punjab

**DIRECTIONS for the question:** Mark the best option:

**Question No. : 64**

Which is the indigenously developed instrument deployed by the India Meteorology Department (IMD) which provides real time visibility information to pilots?

- A) DRISHTI   B) JYOTI   C) UDAY   D) UJWAL

---

**DIRECTIONS for the question:** Mark the best option:

**Question No. : 65**

Where did the four day biennial event, Defexpo India 2016, India's biggest ever land, naval and homeland security exhibition take place in March 2016?

- A) New Delhi   B) Goa   C) Hyderabad   D) Pune

**DIRECTIONS for the question:** Mark the best option:

**Question No. : 66**

Who among the following chess players won the 2016 FIDE World Chess Candidates Tournament in March 2016?

- A) Fabiano Caruana   B) Sergey Karjakin   C) Viswanathan Anand   D) Veselin Topalov

---

**DIRECTIONS for the question:** Mark the best option:

**Question No. : 67**

The Union Ministry of Health and Family Welfare has launched India's first indigenous rotavirus vaccine named 'Rotavac' to combat infant mortality due to

- A) Polio   B) Measles   C) Tetanus   D) Diarrhea

**DIRECTIONS for the question:** Mark the best option:

**Question No. : 68**

India Post has released for the first time a customized 'My Stamp' on in recognition of the company's 75 years of services to the nation.

- A) Hindustan Aeronautics Limited (HAL)                      B) State Bank of India (SBI)  
C) National Thermal Power Corporation Ltd, (NTPC)   D) Indian Oil Corporation (IOC)

---

**DIRECTIONS for the question:** Mark the best option:

**Question No. : 69**

The US President Barack Obama has made a historic visit to" which one of the following North-American countries after a gap of 88 years by any US President?

- A) Mexico   B) Cuba   C) Honduras   D) Nicaragua

**DIRECTIONS for the question:** Mark the best option:

**Question No. : 70**

As per the GOI latest report, the UIDAI has generated the 100<sup>th</sup> crore Aadhaar on April 4, 2016, out of this \_\_\_\_\_ people are above the age of 18 who have got Aadhaar.

- A) 80%   B) 86%   C) 89%   D) 93%
- 

**DIRECTIONS for the question:** Mark the best option:

**Question No. : 71**

Which among the following university is ranked first as per the 'India Rankings 2016', India's first ever ranking of Indian institutions released by GOI?

- A) Institute of Chemical Technology, Mumbai, Maharashtra   B) Jawaharlal Nehru University, Delhi  
C) Indian Institute of Science, Bengaluru, Karnataka   D) University of Hyderabad, Hyderabad, Telangana

**DIRECTIONS for the question:** Mark the best option:

**Question No. : 72**

The Prime Minister of India has gifted to King of Saudi Arabia, a gold-plated replica of the Cheraman Juma Masjid located in\_\_\_\_\_, during to his visit to our country.

- A) Telangana   B) Delhi   C) Uttar Pradesh   D) Kerala
- 

**DIRECTIONS for the question:** Mark the best option:

**Question No. : 73**

Which private equity player has acquired Bengaluru-based IT services company Mphasis in one of the largest deal in India for Rs. 7100 crore?

- A) Kotak Private Equity Group   B) The Carlyle Group   C) Blackstone India   D) None of these

**DIRECTIONS for the question:** Mark the best option:

**Question No. : 74**

How much refunds (approx.) worth of rupees has been issued by the Income Tax department of India in the year 2015-16?

- A) Rs. 0.67 lakh crore   B) Rs. 0.83 lakh crore   C) Rs. 1.01 lakh crore   D) Rs. 1.17 lakh crore
- 

**DIRECTIONS for the question:** Mark the best option:

**Question No. : 75**

In which place, the Rs. 345 crore refinery of Indian Oil Corporation (IOC) was dedicated in the recent past to the nation which helped IOC to become country's top refiner?

- A) Digboi Refinery, Assam   B) Paradip refinery, Odisha   C) Barauni refinery, Bihar   D) Haldia Refinery, West Bengal

**DIRECTIONS for the question:** Mark the best option:

**Question No. : 76**

According to the food and agriculture organisation of the UN, India currently accounts for nearly\_\_\_\_\_ of worlds' total milk production.



A) 10% B) 13% C) 16% D) 19%

---

**DIRECTIONS for the question:** Mark the best option:

**Question No. : 77**

Which telecom sector company has a Rs. 3500 crore spectrum deal with Aircel to get Ail-India 4G frequency in eight circles in India?

A) Reliance JIO B) Idea Cellular C) Bharti Telecom D) Vodafone

**DIRECTIONS for the question:** Mark the best option:

**Question No. : 78**

President of which one of the following SAARC countries has visited India in April 2016 to sign an action plan on Defence Corporation with India?

A) Nepal B) Maldives C) Bangladesh D) Sri Lanka

---

**DIRECTIONS for the question:** Mark the best option:

**Question No. : 79**

Filmmaker Sharmeen Obaid-Chinoy who won the Oscar in 2016 for her documentary film to the life of an honor killing survivor is from

A) Afghanistan B) Pakistan C) Bangladesh D) India

**DIRECTIONS for the question:** Mark the best option:

**Question No. : 80**

Harinder Sindhu of Indian region is the new High Commissioner-designate of \_\_\_\_\_ in India.

A) Australia B) Canada C) UK D) Singapore

---

**Section : Verbal**

---

**DIRECTION for the question:** Choose the option which can be a suitable one word substitute for the given question.

**Question No. : 81**

A hater of learning and knowledge

A) misologist B) bibliophilic C) illiterate D) misogynist

**DIRECTION for the question:** Choose the option which can be a suitable one word substitute for the given question.

**Question No. : 82**

A disease that spreads by means of germs carried in atmosphere

A) contagious B) epidemic C) infectious D) endemic

---

**DIRECTION for the question:** Choose the option which can be a suitable one word substitute for the given question.

**Question No. : 83**

A large-scale departure of people from a territory

- A) exodus    B) immigration    C) migration    D) aberration

**DIRECTION for the question:** Choose the option which can be a suitable one word substitute for the given question.

**Question No. : 84**

A speech made by someone for the first time

- A) maiden    B) extempore    C) spontaneous    D) sermon
- 

**DIRECTION for the question:** In the following question, choose the most appropriate option to fill in the blanks.

**Question No. : 85**

Because of its tendency to \_\_\_\_\_, most Indian art is \_\_\_\_\_ Japanese art, where symbols have been minimized and meaning has been conveyed by using the method of the merest suggestion.

- A) overdraw, similar to    B) understate, reminiscent of    C) imitate, superior to    D) sentimentalise, supportive of  
E) carried , immigrate

**DIRECTION for the question:** In the following question, choose the most appropriate option to fill in the blanks.

**Question No. : 86**

In the absence of native predators to stop the spread of their population, the imported goats \_\_\_\_\_ to such an inordinate degree that they over-grazed the countryside and \_\_\_\_\_ the native vegetation.

- A) thrived, threatened    B) suffered, abandoned    C) propagated, cultivated    D) dwindled, eliminated    E) overgrown , mixing
- 

**DIRECTION for the question:** In the following question, choose the most appropriate option to fill in the blanks.

**Question No. : 87**

Carried away by the \_\_\_\_\_ effects of the experimental medication, the patient \_\_\_\_\_ his desire to continue as a subject for as long as he could.

- A) frantic, repeated    B) noxious, proclaimed    C) supplementary, announced    D) salutary, reiterated    E) fatal , novice

**DIRECTION for the question:** In the following question, choose the most appropriate option to fill in the blanks.

**Question No. : 88**

Just as a highway automobile accident leaves lasting marks of spilled coolant, \_\_\_\_\_ and oil, the smashing together of gigantic land masses releases and redirects fluids that flow, heat, \_\_\_\_\_ and deposit, leaving an enduring record of their presence.

- A) paint, mark    B) fuel, evaporate    C) petrol, disappear    D) anti-freeze, drip    E) oust , grapple
- 

**DIRECTION for the question:** In the question given below, identify the best way of writing the sentence in the context of the correct usage of standard written English.

**Question No. : 89**

We want the trainer to be him who has the best rapport, knowledge about the subject and the most superior communication skills.

- A) We want him to be the trainer who has the best rapport, knowledge about the subject and the most superior communication skills  
B) We want the trainer to be he who has the best rapport, knowledge about the subject and the most superior communication skills  
C) We want the trainer to be him who has the best rapport, knowledge about the subject and the most superior communication skills  
D) We desire that the trainer be him who has the best rapport, knowledge about the subject and the most superior communication skills

**DIRECTION for the question:** In the question given below, identify the best way of writing the sentence in the context of the correct usage of standard written English.

**Question No. : 90**

The government's failing to keep its pledges will have the effect of earning distrust from all the other nations in the region.

- A) The government's failing to keep its pledges will have the affect of earning distrust from all the other nations in the region
  - B) The government failing to keep it's pledges will have the effect of earning distrust from all the other nations in the region
  - C) The government's failing to keep its pledges will have the affect of earning distrust from all the other nation in the region
  - D) The government failing to keep its pledges will have the effect of earning distrust from all the other nations in the region
- 

**DIRECTION for the question:** In the question given below, identify the best way of writing the sentence in the context of the correct usage of standard written English.

**Question No. : 91**

Liberalization has gone hand-in-hand and has offered incentives for such things as personal initiative, ambition, loyalty, hard work, and resourcefulness.

- A) Liberalization had gone hand-in-hand with and has offered incentives for such things as personal initiative and ambition, loyalty, hard work, and resourcefulness
- B) Liberalization has gone hand-in-hand with and has offered incentives for such things as personal initiative and ambition, loyalty, hard work, and resourcefulness
- C) Liberalization has gone hand-in-hand and has offered incentives for such things as personal initiative, ambition, loyalty, hard work, and resourcefulness
- D) Liberalization has gone hand-in-hand and is offering incentives for such things as personal initiative, ambition, loyalty, hard work, and resourcefulness

**DIRECTION for the question:** In the question given below, identify the best way of writing the sentence in the context of the correct usage of standard written English.

**Question No. : 92**

To be sure, there would be scarcely no time left over for other things if school children would have been expected to have considered all sides of every matter on which they had opinions.

- A) To be sure, there would be scarcely any time left over for other things if school children were expected to consider all sides of every matter on which they had opinions
  - B) To be sure, there would be scarcely any time left for other things if working people should be expected to have considered all sides of every matter on which they had opinions
  - C) There would be scarcely no time left over for other things if working people would have been expected to have considered all sides of every matter on which they had opinions
  - D) To be sure, there would be scarcely no time left over for other things if school children will be expected to have been considering all sides of every matter on which they had opinions
- 

**Question No. : 93**

**DIRECTIONS for the question:** Read the passage and answer the question based on it.

Business is a fine balance between opportunity and risk. In an ideal world the entrepreneur identifies a new opportunity, a product, a process or a service that would increase user satisfaction. Successful businesses identify opportunities early, and ride a wave, at minimum risk, to deliver sustained growth and profitability. Bad or incomplete identification of an opportunity or an inadequate understanding of risk can destroy businesses.

The last 18 months have seen a significant number of businesses destroyed all over the world. Opportunities available to Indian firms eight months ago are now history; risk has increased manifold. The high growth environment and the go-go nature of growth in the last decade trivialized the need for a systematic, identification of opportunity and a comprehensive assessment of risk. The pie was so big and growing so quickly, that almost anything made sense and money. Indian firms expanded capacity, market footprint, acquired firms in high-cost regimes, increased exports as a component of the sales and profit, salaries and wages rocketed and there was an opportunity for every stakeholder at seemingly no risk. All and sundry began to think of themselves as world-beaters. Now that they have been beaten by the world it is time to reset the approach to avoid a Ctrl-Alt-Del situation.

Identifying and seizing opportunities requires a profound understanding of markets and customer expectations. Product, process and service have to be tailored to the 'emerging' customer need rather than the current need. The new paradigm is: What can we make that you want to buy as against – we have a product you have to buy! Indian corporates need to develop products and services that are needed around unmet needs of customers and go out and market, rather than sell them. This requires understanding market reality, shifts and drivers on an ongoing continuous basis. Indian firms need to invest in understanding factors critical to their success – the physical, political, economic, social, technology and trade frameworks that will drive the competencies they need to acquire to leverage an opportunity.

This requires a realistic estimate of the value chains that deliver results at least risk and their own strengths and weaknesses to manage and mitigate the risks while making the most of the opportunity. The iPhone is an excellent example of this approach. In a commoditising market Apple identified the needs that users, young, old and mid-aged, wanted and produced a user-friendly product. The factor critical to its success is its ease of connectivity, high-speed download off the Internet and elegant looks, not to mention superb feature list. The least concern for the user is the phone attributes, which, in any case, are good! In contrast, all the leading players of two years ago are now playing catch-up with iPhone, which incidentally, offers a limited range of models, in contrast to the dizzying array and colours from other phone-makers! A good risk reduction exercise.

Risk needs to be understood in its totality. Risk, defined as the possibility that events may not turn out as planned or expected, has many dimensions to it, much of it ignored in a high growth era, and all of which become relevant and rear up when least desired, in difficult times. The primary risk Indian corporates need to contend with is strategic risk – the ability to identify and seize an opportunity and allot resources to ensure delivery. It is sad to see the ‘retail revolution’ leaders of mid-2008, languishing in sour deals. The closure of 20 per cent of these ‘modern format stores’ is a telling commentary on the poor assessment of strategic risk. Minimizing strategic risk increases the competitiveness of the firm.

The second major risk facing Indian corporate is operational risk; Indian productivity remains way behind global standards. And corporates have not even begun addressing them. The garment industry is a case in point. On average, an Indian garment maker produces 7 – 10 garments per machine per day. The world standard is 23 – 25! No wage differential can mask the harmful consequences of this depth of under-performance. Remove the subsidies and the garment industry will sink like a stone. Reducing operational risk increases asset and resource productivity. Capacity utilization is a good mitigator of operational and strategic risk; and both of them could do with significant streamlining. With increasing profitability Indian firms have been diversifying – a nice, but risky way, to seek opportunities. Real estate is littered with firms which saw ‘opportunity’, created land banks and are now sitting ducks.

The most appropriate title for this passage is

- A) Business Strategies for the Future    B) Effect of Recession on Businesses    C) Balancing Risk & Opportunity in Business  
D) Identifying Businesses for the “Emerging Customers”    E) Bad or incomplete identification of an opportunity

#### **Question No. : 94**

**DIRECTIONS for the question:** Read the passage and answer the question based on it

Business is a fine balance between opportunity and risk. In an ideal world the entrepreneur identifies a new opportunity, a product, a process or a service that would increase user satisfaction. Successful businesses identify opportunities early, and ride a wave, at minimum risk, to deliver sustained growth and profitability. Bad or incomplete identification of an opportunity or an inadequate understanding of risk can destroy businesses.

The last 18 months have seen a significant number of businesses destroyed all over the world. Opportunities available to Indian firms eight months ago are now history; risk has increased manifold. The high growth environment and the go-go nature of growth in the last decade trivialized the need for a systematic, identification of opportunity and a comprehensive assessment of risk. The pie was so big and growing so quickly, that almost anything made sense and money. Indian firms expanded capacity, market footprint, acquired firms in high-cost regimes, increased exports as a component of the sales and profit, salaries and wages rocketed and there was an opportunity for every stakeholder at seemingly no risk. All and sundry began to think of themselves as world-beaters. Now that they have been beaten by the world it is time to reset the approach to avoid a Ctrl-Alt-Del situation.

Identifying and seizing opportunities requires a profound understanding of markets and customer expectations. Product, process and service have to be tailored to the ‘emerging’ customer need rather than the current need. The new paradigm is: What can we make that you want to buy as against – we have a product you have to buy! Indian corporates need to develop products and services that are needed around unmet needs of customers and go out and market, rather than sell them. This requires understanding market reality, shifts and drivers on an ongoing continuous basis. Indian firms need to invest in understanding factors critical to their success – the physical, political, economic, social, technology and trade frameworks that will drive the competencies they need to acquire to leverage an opportunity.

This requires a realistic estimate of the value chains that deliver results at least risk and their own strengths and weaknesses to manage and mitigate the risks while making the most of the opportunity. The iPhone is an excellent example of this approach. In a commoditising market Apple identified the needs that users, young, old and mid-aged, wanted and produced a user-friendly product. The factor critical to its success is its ease of connectivity, high-speed download off the Internet and elegant looks, not to mention superb feature list. The least concern for the user is the phone attributes, which, in any case, are good! In contrast, all the leading players of two years ago are now playing catch-up with iPhone, which incidentally, offers a limited range of models, in contrast to the dizzying array and colours from other phone-makers! A good risk reduction exercise.

Risk needs to be understood in its totality. Risk, defined as the possibility that events may not turn out as planned or expected, has many dimensions to it, much of it ignored in a high growth era, and all of which become relevant and rear up when least desired, in difficult times. The primary risk Indian corporates need to contend with is strategic risk – the ability to identify and seize an opportunity and allot resources to ensure delivery. It is sad to see the ‘retail revolution’ leaders of mid-2008, languishing in sour deals. The closure of 20 per cent of these ‘modern format stores’ is a telling commentary on the poor assessment of strategic risk. Minimizing strategic risk increases the competitiveness of the firm.

The second major risk facing Indian corporate is operational risk; Indian productivity remains way behind global standards. And corporates have not even begun addressing them. The garment industry is a case in point. On average, an Indian garment maker

produces 7 – 10 garments per machine per day. The world standard is 23 – 25! No wage differential can mask the harmful consequences of this depth of under-performance. Remove the subsidies and the garment industry will sink like a stone. Reducing operational risk increases asset and resource productivity. Capacity utilization is a good mitigator of operational and strategic risk; and both of them could do with significant streamlining. With increasing profitability Indian firms have been diversifying – a nice, but risky way, to seek opportunities. Real estate is littered with firms which saw ‘opportunity’, created land banks and are now sitting ducks.

“Risk needs to be understood in its totality.” Which of the following relevant risk factor/s is/are discussed by the author in this passage?

I. Strategic Risk      II. Operational Risk      III. Recession

A) I and II    B) II only    C) I only    D) I, II and III    E) II and III only

---

### Question No. : 95

**DIRECTIONS for the question:** Read the passage and answer the question based on it.

Business is a fine balance between opportunity and risk. In an ideal world the entrepreneur identifies a new opportunity, a product, a process or a service that would increase user satisfaction. Successful businesses identify opportunities early, and ride a wave, at minimum risk, to deliver sustained growth and profitability. Bad or incomplete identification of an opportunity or an inadequate understanding of risk can destroy businesses.

The last 18 months have seen a significant number of businesses destroyed all over the world. Opportunities available to Indian firms eight months ago are now history; risk has increased manifold. The high growth environment and the go-go nature of growth in the last decade trivialized the need for a systematic, identification of opportunity and a comprehensive assessment of risk. The pie was so big and growing so quickly, that almost anything made sense and money. Indian firms expanded capacity, market footprint, acquired firms in high-cost regimes, increased exports as a component of the sales and profit, salaries and wages rocketed and there was an opportunity for every stakeholder at seemingly no risk. All and sundry began to think of themselves as world-beaters. Now that they have been beaten by the world it is time to reset the approach to avoid a Ctrl-Alt-Del situation.

Identifying and seizing opportunities requires a profound understanding of markets and customer expectations. Product, process and service have to be tailored to the ‘emerging’ customer need rather than the current need. The new paradigm is: What can we make that you want to buy as against – we have a product you have to buy! Indian corporates need to develop products and services that are needed around unmet needs of customers and go out and market, rather than sell them. This requires understanding market reality, shifts and drivers on an ongoing continuous basis. Indian firms need to invest in understanding factors critical to their success – the physical, political, economic, social, technology and trade frameworks that will drive the competencies they need to acquire to leverage an opportunity.

This requires a realistic estimate of the value chains that deliver results at least risk and their own strengths and weaknesses to manage and mitigate the risks while making the most of the opportunity. The iPhone is an excellent example of this approach. In a commoditising market Apple identified the needs that users, young, old and mid-aged, wanted and produced a user-friendly product. The factor critical to its success is its ease of connectivity, high-speed download off the Internet and elegant looks, not to mention superb feature list. The least concern for the user is the phone attributes, which, in any case, are good! In contrast, all the leading players of two years ago are now playing catch-up with iPhone, which incidentally, offers a limited range of models, in contrast to the dizzying array and colours from other phone-makers! A good risk reduction exercise.

Risk needs to be understood in its totality. Risk, defined as the possibility that events may not turn out as planned or expected, has many dimensions to it, much of it ignored in a high growth era, and all of which become relevant and rear up when least desired, in difficult times. The primary risk Indian corporates need to contend with is strategic risk – the ability to identify and seize an opportunity and allot resources to ensure delivery. It is sad to see the ‘retail revolution’ leaders of mid-2008, languishing in sour deals. The closure of 20 per cent of these ‘modern format stores’ is a telling commentary on the poor assessment of strategic risk. Minimizing strategic risk increases the competitiveness of the firm.

The second major risk facing Indian corporate is operational risk; Indian productivity remains way behind global standards. And corporates have not even begun addressing them. The garment industry is a case in point. On average, an Indian garment maker produces 7 – 10 garments per machine per day. The world standard is 23 – 25! No wage differential can mask the harmful consequences of this depth of under-performance. Remove the subsidies and the garment industry will sink like a stone. Reducing operational risk increases asset and resource productivity. Capacity utilization is a good mitigator of operational and strategic risk; and both of them could do with significant streamlining. With increasing profitability Indian firms have been diversifying – a nice, but risky way, to seek opportunities. Real estate is littered with firms which saw ‘opportunity’, created land banks and are now sitting ducks.

The best example of leveraging a business opportunity, as implied in the passage, is

A) garment industry    B) retail revolution    C) real estate    D) iPhone    E) cosmetic industry

### Question No. : 96

**DIRECTIONS for the question:** Read the passage and answer the question based on it.

Business is a fine balance between opportunity and risk. In an ideal world the entrepreneur identifies a new opportunity, a product, a process or a service that would increase user satisfaction. Successful businesses identify opportunities early, and ride a wave, at

minimum risk, to deliver sustained growth and profitability. Bad or incomplete identification of an opportunity or an inadequate understanding of risk can destroy businesses.

The last 18 months have seen a significant number of businesses destroyed all over the world. Opportunities available to Indian firms eight months ago are now history; risk has increased manifold. The high growth environment and the go-go nature of growth in the last decade trivialized the need for a systematic, identification of opportunity and a comprehensive assessment of risk. The pie was so big and growing so quickly, that almost anything made sense and money. Indian firms expanded capacity, market footprint, acquired firms in high-cost regimes, increased exports as a component of the sales and profit, salaries and wages rocketed and there was an opportunity for every stakeholder at seemingly no risk. All and sundry began to think of themselves as world-beaters. Now that they have been beaten by the world it is time to reset the approach to avoid a Ctrl-Alt-Del situation.

Identifying and seizing opportunities requires a profound understanding of markets and customer expectations. Product, process and service have to be tailored to the 'emerging' customer need rather than the current need. The new paradigm is: What can we make that you want to buy as against – we have a product you have to buy! Indian corporates need to develop products and services that are needed around unmet needs of customers and go out and market, rather than sell them. This requires understanding market reality, shifts and drivers on an ongoing continuous basis. Indian firms need to invest in understanding factors critical to their success – the physical, political, economic, social, technology and trade frameworks that will drive the competencies they need to acquire to leverage an opportunity.

This requires a realistic estimate of the value chains that deliver results at least risk and their own strengths and weaknesses to manage and mitigate the risks while making the most of the opportunity. The iPhone is an excellent example of this approach. In a commoditising market Apple identified the needs that users, young, old and mid-aged, wanted and produced a user-friendly product. The factor critical to its success is its ease of connectivity, high-speed download off the Internet and elegant looks, not to mention superb feature list. The least concern for the user is the phone attributes, which, in any case, are good! In contrast, all the leading players of two years ago are now playing catch-up with iPhone, which incidentally, offers a limited range of models, in contrast to the dizzying array and colours from other phone-makers! A good risk reduction exercise.

Risk needs to be understood in its totality. Risk, defined as the possibility that events may not turn out as planned or expected, has many dimensions to it, much of it ignored in a high growth era, and all of which become relevant and rear up when least desired, in difficult times. The primary risk Indian corporates need to contend with is strategic risk – the ability to identify and seize an opportunity and allot resources to ensure delivery. It is sad to see the 'retail revolution' leaders of mid-2008, languishing in sour deals. The closure of 20 per cent of these 'modern format stores' is a telling commentary on the poor assessment of strategic risk. Minimizing strategic risk increases the competitiveness of the firm.

The second major risk facing Indian corporate is operational risk; Indian productivity remains way behind global standards. And corporates have not even begun addressing them. The garment industry is a case in point. On average, an Indian garment maker produces 7 – 10 garments per machine per day. The world standard is 23 – 25! No wage differential can mask the harmful consequences of this depth of under-performance. Remove the subsidies and the garment industry will sink like a stone. Reducing operational risk increases asset and resource productivity. Capacity utilization is a good mitigator of operational and strategic risk; and both of them could do with significant streamlining. With increasing profitability Indian firms have been diversifying – a nice, but risky way, to seek opportunities. Real estate is littered with firms which saw 'opportunity', created land banks and are now sitting ducks.

"In contrast, all the leading players of two years ago are now playing catch-up with iPhone." What does this sentence imply?

- A) Many leading music companies of yesteryears are offering catchy tunes for iPhones
- B) All the leading competitors of Apple are trying to catch-up with the latter by launching their own versions of the iPhone
- C) Several retired sports people are now using iPhones to listen to catchy music
- D) no one was eager to face the competition
- E) none of these

### Question No. : 97

**DIRECTIONS for the question:** Read the passage and answer the question based on it.

Business is a fine balance between opportunity and risk. In an ideal world the entrepreneur identifies a new opportunity, a product, a process or a service that would increase user satisfaction. Successful businesses identify opportunities early, and ride a wave, at minimum risk, to deliver sustained growth and profitability. Bad or incomplete identification of an opportunity or an inadequate understanding of risk can destroy businesses.

The last 18 months have seen a significant number of businesses destroyed all over the world. Opportunities available to Indian firms eight months ago are now history; risk has increased manifold. The high growth environment and the go-go nature of growth in the last decade trivialized the need for a systematic, identification of opportunity and a comprehensive assessment of risk. The pie was so big and growing so quickly, that almost anything made sense and money. Indian firms expanded capacity, market footprint, acquired firms in high-cost regimes, increased exports as a component of the sales and profit, salaries and wages rocketed and there was an opportunity for every stakeholder at seemingly no risk. All and sundry began to think of themselves as world-beaters. Now that they have been beaten by the world it is time to reset the approach to avoid a Ctrl-Alt-Del situation.

Identifying and seizing opportunities requires a profound understanding of markets and customer expectations. Product, process and service have to be tailored to the 'emerging' customer need rather than the current need. The new paradigm is: What can we make that you want to buy as against – we have a product you have to buy! Indian corporates need to develop products and

services that are needed around unmet needs of customers and go out and market, rather than sell them. This requires understanding market reality, shifts and drivers on an ongoing continuous basis. Indian firms need to invest in understanding factors critical to their success – the physical, political, economic, social, technology and trade frameworks that will drive the competencies they need to acquire to leverage an opportunity.

This requires a realistic estimate of the value chains that deliver results at least risk and their own strengths and weaknesses to manage and mitigate the risks while making the most of the opportunity. The iPhone is an excellent example of this approach. In a commoditising market Apple identified the needs that users, young, old and mid-aged, wanted and produced a user-friendly product. The factor critical to its success is its ease of connectivity, high-speed download off the Internet and elegant looks, not to mention superb feature list. The least concern for the user is the phone attributes, which, in any case, are good! In contrast, all the leading players of two years ago are now playing catch-up with iPhone, which incidentally, offers a limited range of models, in contrast to the dizzying array and colours from other phone-makers! A good risk reduction exercise.

Risk needs to be understood in its totality. Risk, defined as the possibility that events may not turn out as planned or expected, has many dimensions to it, much of it ignored in a high growth era, and all of which become relevant and rear up when least desired, in difficult times. The primary risk Indian corporates need to contend with is strategic risk – the ability to identify and seize an opportunity and allot resources to ensure delivery. It is sad to see the 'retail revolution' leaders of mid-2008, languishing in sour deals. The closure of 20 per cent of these 'modern format stores' is a telling commentary on the poor assessment of strategic risk. Minimizing strategic risk increases the competitiveness of the firm.

The second major risk facing Indian corporate is operational risk; Indian productivity remains way behind global standards. And corporates have not even begun addressing them. The garment industry is a case in point. On average, an Indian garment maker produces 7 – 10 garments per machine per day. The world standard is 23 – 25! No wage differential can mask the harmful consequences of this depth of under-performance. Remove the subsidies and the garment industry will sink like a stone. Reducing operational risk increases asset and resource productivity. Capacity utilization is a good mitigator of operational and strategic risk; and both of them could do with significant streamlining. With increasing profitability Indian firms have been diversifying – a nice, but risky way, to seek opportunities. Real estate is littered with firms which saw 'opportunity', created land banks and are now sitting ducks.

Which of the following is **not** true in the context of this passage?

- A) In a high growth area, businesses tend to ignore risk    B) Diversification is a nice way to seek opportunities, without risk  
C) About a fifth of the "modern format stores" have shut down because of their poor assessment of strategic risk  
D) 'Marketing', and not 'Selling' is the new way to do business    E) only thinking can save money

**DIRECTION for the question:** The question below has two blanks, each blank indicating that something has been omitted. Choose the set of words for each blank which best fits the meaning of the sentence as a whole

**Question No. : 98**

Keeping in mind the \_\_\_\_\_ to develop the sector the government has \_\_\_\_\_ solicited foreign investment.

- A) Importance, never    B) Proposal, forcibly    C) Objective, prudently    D) View, discretely    E) feel, out

**Question No. : 99**

**DIRECTIONS for the question:** Read the passage and answer the question based on it.

## PASSAGE II

The G-20 group of nations is made up of the world's most powerful economies – accounting for 90 per cent of the world's economic output, 80 per cent of world trade and two-thirds of the world's population. Now that the leaders who met have returned home, in high spirits, believing they have found a common ground over the key issues of financial regulation, economic growth, strengthening the global financial architecture and helping the world's poorest, I am reminded of the ancient Atharva Veda samhita 'Indrah somam pibatu ksema astu na'. Meaning "As long as Lord Indra is drunk with soma juice, I am in high spirits."

The only real voices I heard articulating the will of Europeans were in the crowds outside the G-20. I have lived in Europe for two decades and, never before have I seen tens of thousands of Europeans who marched through Berlin, Vienna, Paris and other European cities to demand action on poverty, job losses and climate change. And, their mood was of exhaustion and disillusionment. When the celebrations have died down, it will be easier to look at what actually happened in London with a tranquil mind.

In my view, the summit participants took the easy way out. Their decision to pump a further \$5 trillion into the collapsing world economy within the foreseeable future could indeed prove to be the undesirable Hobson's choice. In combating this crisis, it seems to me that the international community is in fact setting the foundation for a consequent crisis, which will outsize the current one. Miserably, at the summit, the crucial questions went unanswered because they weren't even asked. Why are we in the current situation anyway? Who or what has gotten us into this mess? The EU counts on exports as a stimulus to the economy, like Asia, something the US abandoned long ago. Though the sub-prime rage infected Europe too, its financial woes shoot primarily from the US, with its unbridled consumerism and wars, and will never be solved until the US puts its house in order. What was peddled even a year ago as a joyous community, a big happy family, is now a dysfunctional one, complete with sibling rivalry, spoiled brats and marital strife.

The number that has been bandied about is beyond the comprehension of "Joe, the plumber". Almost all world leaders are also unable to figure out the enormity of the global debt-quicksand. There have been suggestions that if all these papers were to be shredded and the debts written off, the global banks' balance sheets would be wiped clean of such toxic assets. As a result the economy would restart and the good old days of cheap credit and unrestrained consumption would usher another boom. This is a fairy tale. In the old days, when hoodlums wanted to make someone disappear for good, they would tie his legs together and attach the rope to a heavy object and throw the poor fellow into a lake or sea. The current financial system is not unlike the man who has been thrown overboard and being dragged down by the heavy object. The only chance for survival is if the man could somehow loosen the rope and detach the weight from his legs and swim to the surface.

In short, the farmers, like all the millions of gamblers who have been ensnared by the global casino, are now in the debt trap and being slowly dragged down to the bottom of the lake. Therefore, pumping hundreds of billions into the banks will not solve the problem. When millions are caught in the debt trap and there is no way out, and they see billions been given to the Wall Street fat cats, lynching parties will be the order of the day. The countdown has started. With unemployment soaring many European Union countries want the migrant workers they once attracted, to go home as quickly as possible. They are sparing no expense or effort to encourage them to leave.

After the European Union's eastward expansion in 2004, tens of thousands of Asians found jobs in Polish, Czech and Slovak factories, where they were welcomed with open arms to fill the jobs that one million Poles and hundreds of thousands of Czechs, Balts, Slovaks and Hungarians had left behind when they migrated to the wealthier EU countries. Ireland, Great Britain and Sweden, unlike Germany and Austria, had immediately opened their borders to citizens of the new Member States, and Spain followed suit two years later. Once the global economic crisis erupted, those days were over. Unemployment has risen twice as fast in Great Britain and Spain as elsewhere in Europe. Now the citizens of Western European countries need the jobs themselves, and their Governments are resorting to all kinds of tricks and incentives to get rid of the hands they once needed so badly. The G-20 has just put a fresh coat of paint on a world that is rotting. Only a strong popular call-up will make it possible to lay solid foundations to build another world, in which finance is at the service of people, and not the other way round.

G-20 group of nations

- I. Accounts for 66% of the world's population
- II. Comprises the world's most powerful economies
- III. Accounts for 80% of the world trade

A) I and III    B) II and III    C) I only    D) I, II and III

### Question No. : 100

**DIRECTIONS for the question:** Read the passage and answer the question based on it.

#### PASSAGE II

The G-20 group of nations is made up of the world's most powerful economies – accounting for 90 per cent of the world's economic output, 80 per cent of world trade and two-thirds of the world's population. Now that the leaders who met have returned home, in high spirits, believing they have found a common ground over the key issues of financial regulation, economic growth, strengthening the global financial architecture and helping the world's poorest, I am reminded of the ancient Atharva Veda samhita 'Indrah somam pibatu ksema astu na'. Meaning "As long as Lord Indra is drunk with soma juice, I am in high spirits."

The only real voices I heard articulating the will of Europeans were in the crowds outside the G-20. I have lived in Europe for two decades and, never before have I seen tens of thousands of Europeans who marched through Berlin, Vienna, Paris and other European cities to demand action on poverty, job losses and climate change. And, their mood was of exhaustion and disillusionment. When the celebrations have died down, it will be easier to look at what actually happened in London with a tranquil mind.

In my view, the summit participants took the easy way out. Their decision to pump a further \$5 trillion into the collapsing world economy within the foreseeable future could indeed prove to be the undesirable Hobson's choice. In combating this crisis, it seems to me that the international community is in fact setting the foundation for a consequent crisis, which will outsize the current one. Miserably, at the summit, the crucial questions went unanswered because they weren't even asked. Why are we in the current situation anyway? Who or what has gotten us into this mess? The EU counts on exports as a stimulus to the economy, like Asia, something the US abandoned long ago. Though the sub-prime rage infected Europe too, its financial woes shoot primarily from the US, with its unbridled consumerism and wars, and will never be solved until the US puts its house in order. What was peddled even a year ago as a joyous community, a big happy family, is now a dysfunctional one, complete with sibling rivalry, spoiled brats and marital strife.

The number that has been bandied about is beyond the comprehension of "Joe, the plumber". Almost all world leaders are also unable to figure out the enormity of the global debt-quicksand. There have been suggestions that if all these papers were to be shredded and the debts written off, the global banks' balance sheets would be wiped clean of such toxic assets. As a result the economy would restart and the good old days of cheap credit and unrestrained consumption would usher another boom. This is a fairy tale. In the old days, when hoodlums wanted to make someone disappear for good, they would tie his legs together and attach the rope to a heavy object and throw the poor fellow into a lake or sea. The current financial system is not unlike the man who has been thrown overboard and being dragged down by the heavy object. The only chance for survival is if the man could



somehow loosen the rope and detach the weight from his legs and swim to the surface.

In short, the farmers, like all the millions of gamblers who have been ensnared by the global casino, are now in the debt trap and being slowly dragged down to the bottom of the lake. Therefore, pumping hundreds of billions into the banks will not solve the problem. When millions are caught in the debt trap and there is no way out, and they see billions been given to the Wall Street fat cats, lynching parties will be the order of the day. The countdown has started. With unemployment soaring many European Union countries want the migrant workers they once attracted, to go home as quickly as possible. They are sparing no expense or effort to encourage them to leave.

After the European Union's eastward expansion in 2004, tens of thousands of Asians found jobs in Polish, Czech and Slovak factories, where they were welcomed with open arms to fill the jobs that one million Poles and hundreds of thousands of Czechs, Balts, Slovaks and Hungarians had left behind when they migrated to the wealthier EU countries. Ireland, Great Britain and Sweden, unlike Germany and Austria, had immediately opened their borders to citizens of the new Member States, and Spain followed suit two years later. Once the global economic crisis erupted, those days were over. Unemployment has risen twice as fast in Great Britain and Spain as elsewhere in Europe. Now the citizens of Western European countries need the jobs themselves, and their Governments are resorting to all kinds of tricks and incentives to get rid of the hands they once needed so badly. The G-20 has just put a fresh coat of paint on a world that is rotting. Only a strong popular call-up will make it possible to lay solid foundations to build another world, in which finance is at the service of people, and not the other way round.

In the context of this passage, the phrase "Joe, the plumber" refers to

- A) The plumbing community in general    B) The less educated EU citizen    C) The average American citizen    D) None of these

### Question No. : 101

**DIRECTIONS for the question:** Read the passage and answer the question based on it.

#### PASSAGE II

The G-20 group of nations is made up of the world's most powerful economies – accounting for 90 per cent of the world's economic output, 80 per cent of world trade and two-thirds of the world's population. Now that the leaders who met have returned home, in high spirits, believing they have found a common ground over the key issues of financial regulation, economic growth, strengthening the global financial architecture and helping the world's poorest, I am reminded of the ancient Atharva Veda samhita 'Indrah somam pibatu ksemo astu na'. Meaning "As long as Lord Indra is drunk with soma juice, I am in high spirits."

The only real voices I heard articulating the will of Europeans were in the crowds outside the G-20. I have lived in Europe for two decades and, never before have I seen tens of thousands of Europeans who marched through Berlin, Vienna, Paris and other European cities to demand action on poverty, job losses and climate change. And, their mood was of exhaustion and disillusionment. When the celebrations have died down, it will be easier to look at what actually happened in London with a tranquil mind.

In my view, the summit participants took the easy way out. Their decision to pump a further \$5 trillion into the collapsing world economy within the foreseeable future could indeed prove to be the undesirable Hobson's choice. In combating this crisis, it seems to me that the international community is in fact setting the foundation for a consequent crisis, which will outsize the current one. Miserably, at the summit, the crucial questions went unanswered because they weren't even asked. Why are we in the current situation anyway? Who or what has gotten us into this mess? The EU counts on exports as a stimulus to the economy, like Asia, something the US abandoned long ago. Though the sub-prime rage infected Europe too, its financial woes shoot primarily from the US, with its unbridled consumerism and wars, and will never be solved until the US puts its house in order. What was peddled even a year ago as a joyous community, a big happy family, is now a dysfunctional one, complete with sibling rivalry, spoiled brats and marital strife.

The number that has been bandied about is beyond the comprehension of "Joe, the plumber". Almost all world leaders are also unable to figure out the enormity of the global debt-quicksand. There have been suggestions that if all these papers were to be shredded and the debts written off, the global banks' balance sheets would be wiped clean of such toxic assets. As a result the economy would restart and the good old days of cheap credit and unrestrained consumption would usher another boom. This is a fairy tale. In the old days, when hoodlums wanted to make someone disappear for good, they would tie his legs together and attach the rope to a heavy object and throw the poor fellow into a lake or sea. The current financial system is not unlike the man who has been thrown overboard and being dragged down by the heavy object. The only chance for survival is if the man could somehow loosen the rope and detach the weight from his legs and swim to the surface.

In short, the farmers, like all the millions of gamblers who have been ensnared by the global casino, are now in the debt trap and being slowly dragged down to the bottom of the lake. Therefore, pumping hundreds of billions into the banks will not solve the problem. When millions are caught in the debt trap and there is no way out, and they see billions been given to the Wall Street fat cats, lynching parties will be the order of the day. The countdown has started. With unemployment soaring many European Union countries want the migrant workers they once attracted, to go home as quickly as possible. They are sparing no expense or effort to encourage them to leave.

After the European Union's eastward expansion in 2004, tens of thousands of Asians found jobs in Polish, Czech and Slovak factories, where they were welcomed with open arms to fill the jobs that one million Poles and hundreds of thousands of Czechs, Balts, Slovaks and Hungarians had left behind when they migrated to the wealthier EU countries. Ireland, Great Britain and Sweden, unlike Germany and Austria, had immediately opened their borders to citizens of the new Member States, and Spain followed suit two years later. Once the global economic crisis erupted, those days were over. Unemployment has risen twice as fast in Great Britain and Spain as elsewhere

in Europe. Now the citizens of Western European countries need the jobs themselves, and their Governments are resorting to all kinds of tricks and incentives to get rid of the hands they once needed so badly. The G-20 has just put a fresh coat of paint on a world that is rotting. Only a strong popular call-up will make it possible to lay solid foundations to build another world, in which finance is at the service of people, and not the other way round.

According to the passage, which of the following statements is true?

- I. G-20 leaders got drunk at the Summit.
  - II. The G-20 leaders were in high spirits assuming they have found the solution for the current economic crisis.
  - III. The European crowds outside the G-20 Summit venue marched through the streets of Berlin, etc., in celebrations.
- A) I and II    B) II only    C) I only    D) II and III

### Question No. : 102

**DIRECTIONS for the question:** Read the passage and answer the question based on it.

#### PASSAGE II

The G-20 group of nations is made up of the world's most powerful economies – accounting for 90 per cent of the world's economic output, 80 per cent of world trade and two-thirds of the world's population. Now that the leaders who met have returned home, in high spirits, believing they have found a common ground over the key issues of financial regulation, economic growth, strengthening the global financial architecture and helping the world's poorest, I am reminded of the ancient Atharva Veda samhita 'Indrah somam pibatu ksema astu na'. Meaning "As long as Lord Indra is drunk with soma juice, I am in high spirits."

The only real voices I heard articulating the will of Europeans were in the crowds outside the G-20. I have lived in Europe for two decades and, never before have I seen tens of thousands of Europeans who marched through Berlin, Vienna, Paris and other European cities to demand action on poverty, job losses and climate change. And, their mood was of exhaustion and disillusionment. When the celebrations have died down, it will be easier to look at what actually happened in London with a tranquil mind.

In my view, the summit participants took the easy way out. Their decision to pump a further \$5 trillion into the collapsing world economy within the foreseeable future could indeed prove to be the undesirable Hobson's choice. In combating this crisis, it seems to me that the international community is in fact setting the foundation for a consequent crisis, which will outsize the current one. Miserably, at the summit, the crucial questions went unanswered because they weren't even asked. Why are we in the current situation anyway? Who or what has gotten us into this mess? The EU counts on exports as a stimulus to the economy, like Asia, something the US abandoned long ago. Though the sub-prime rage infected Europe too, its financial woes shoot primarily from the US, with its unbridled consumerism and wars, and will never be solved until the US puts its house in order. What was peddled even a year ago as a joyous community, a big happy family, is now a dysfunctional one, complete with sibling rivalry, spoiled brats and marital strife.

The number that has been bandied about is beyond the comprehension of "Joe, the plumber". Almost all world leaders are also unable to figure out the enormity of the global debt-quicksand. There have been suggestions that if all these papers were to be shredded and the debts written off, the global banks' balance sheets would be wiped clean of such toxic assets. As a result the economy would restart and the good old days of cheap credit and unrestrained consumption would usher another boom. This is a fairy tale. In the old days, when hoodlums wanted to make someone disappear for good, they would tie his legs together and attach the rope to a heavy object and throw the poor fellow into a lake or sea. The current financial system is not unlike the man who has been thrown overboard and being dragged down by the heavy object. The only chance for survival is if the man could somehow loosen the rope and detach the weight from his legs and swim to the surface.

In short, the farmers, like all the millions of gamblers who have been ensnared by the global casino, are now in the debt trap and being slowly dragged down to the bottom of the lake. Therefore, pumping hundreds of billions into the banks will not solve the problem. When millions are caught in the debt trap and there is no way out, and they see billions been given to the Wall Street fat cats, lynching parties will be the order of the day. The countdown has started. With unemployment soaring many European Union countries want the migrant workers they once attracted, to go home as quickly as possible. They are sparing no expense or effort to encourage them to leave.

After the European Union's eastward expansion in 2004, tens of thousands of Asians found jobs in Polish, Czech and Slovak factories, where they were welcomed with open arms to fill the jobs that one million Poles and hundreds of thousands of Czechs, Balts, Slovaks and Hungarians had left behind when they migrated to the wealthier EU countries. Ireland, Great Britain and Sweden, unlike Germany and Austria, had immediately opened their borders to citizens of the new Member States, and Spain followed suit two years later. Once the global economic crisis erupted, those days were over. Unemployment has risen twice as fast in Great Britain and Spain as elsewhere in Europe. Now the citizens of Western European countries need the jobs themselves, and their Governments are resorting to all kinds of tricks and incentives to get rid of the hands they once needed so badly. The G-20 has just put a fresh coat of paint on a world that is rotting. Only a strong popular call-up will make it possible to lay solid foundations to build another world, in which finance is at the service of people, and not the other way round.

Almost all the world leaders at the recent G-20 Summit

- I. need to settle down and analyse the events at the summit with a composed mind.
- II. took the easy way out of finding a solution to the economic crisis, by deciding to pump in huge funds into the economy.

III. couldn't even perceive the real questions to be answered.

A) III    B) II and III    C) I and II    D) All these

---

**Question No. : 103**

**DIRECTIONS for the question:** Read the passage and answer the question based on it.

**PASSAGE III**

Over 60 years have passed since India got its independence. With the passage of time, one hoped, Indian democracy would become vibrant and strong. There are many pillars of democracy, including an independent judiciary, a free press, and free and fair elections. We have the first two intact to a great extent, but not the third. We are on the threshold of a new round of elections – the 15<sup>th</sup> general election to the Lok Sabha and Assembly election in three States – and political parties are vying with one another to win votes.

Most reprehensibly, efforts are made to acquire the support of criminals. In the 14<sup>th</sup> Lok Sabha, as many as 93 MPs had criminal charges pending against them. Their trial proceedings have not attained finality. Section 8 of the Representation of the People (RP) Act, 1951 requires a conviction for a period of over two years to disqualify a candidate from contesting. If he is found guilty of offence under special laws, he would stand disqualified irrespective of the period of sentence. The principle that is relied upon to protect the candidate from disqualification when serious charges are pending is that of criminal jurisprudence – that a person is presumed innocent unless found guilty.

However, this is only for the purpose of preventing punishment by way of incarceration or fine. There is no fundamental right to contest an election to Parliament or a Legislative Assembly. A statute can take away the right of such a person to contest, on the basis of the higher principle of maintaining the purity of elections. Under criminal law, there are at least three stages at which an accused can be relieved of charges. A magistrate trying an offence has first to take cognizance of the charge sheet and then satisfy himself that prima facie an offence has been made out, after applying his mind to the statements and the documents annexed to the Police Report. The case could be closed at this stage. Thereafter the accused has an opportunity at the time of framing of charges to show that no prima facie as is made out or that no reasonable grounds exist to suspect him of the commission of the offence. He would then be discharged.

Lastly, an accused could seek quashing of charges under Section 482 of the Criminal Procedure Code. It would, therefore, be incorrect to apply the presumption of innocence, in a wooden fashion, to the issue of disqualification of a candidate contesting elections without taking note of the damage that otherwise would be caused to the democratic process. Section 8 of the RP Act will have to be amended so that a person against whom charges have been framed by a court for an offence mentioned in Section 8(1), or a person who is charged with an offence which carries a sentence of imprisonment of more than two years, would stand disqualified.

However, it is only in a case where the charge sheet has been filed a year prior to the notification of elections that disqualification should apply. Otherwise a rival could easily file a false case and have a charge sheet framed, leaving no time for the accused to get a discharge or have the charge sheet set aside. In the absence of such an amendment to Section 8 of the RP Act, the Supreme Court in 2002 delivered a judgment in Association of Democratic Reforms, requiring every candidate to disclose, at the time of filing of nomination, any charges pending against him for offences that may involve punishment for a period above two years or otherwise. It will be a great day for India if, instead of an amendment to the RP Act, every party obtains from prospective candidates statement of the pending criminal cases against them and allots the ticket only to such among them who possess an clean record. Perhaps Section 29-A should be amended to incorporate in the Constitution and objectives of all parties that no candidate with criminal charges pending against him would be allotted the ticket.

The RP Act has applied a different yardstick in the case of one who is convicted while being an MP or MLA. In such a case, a conviction even for one of the serious offences mentioned in Section 8, or for a period exceeding two years, will not cause disqualification. In another case concerning a candidate in an election, the Supreme Court has held that not only would such candidate have to prefer an appeal or revision petition, but he would have to get a stay on the sentence and of the conviction, to prevent disqualification. This would mean the candidate would have to establish before the appellate court that the findings rendered against him by the trial court are unjustified or perverse. In the case of a sitting legislator, however, by reason of Section 8(4), the mere filing of an appeal would operate as a stay of disqualification, even if bail was refused and he obtained neither stay of conviction nor a stay of sentence, obviously, this would seem to be discriminatory and violative of the equality clause in Article 14 of the Constitution. Unfortunately, the Supreme Court appears to feel differently about the allegation of discrimination brought about between a sitting legislator and a candidate. The reasons it gives in Prabhakaran v. Jayarajan for why a legislator must be given special dispensation do not appear to be sound.

What is the most appropriate title for the passage?

A) Politics of Democracy    B) Criminalisation of Politics    C) Re-democratising the Electoral System  
D) Judiciary's Role in Elections

**Question No. : 104**

**DIRECTIONS for the question:** Read the passage and answer the question based on it.

**PASSAGE III**

Over 60 years have passed since India got its independence. With the passage of time, one hoped, Indian democracy would become vibrant and strong. There are many pillars of democracy, including an independent judiciary, a free press, and free and fair elections. We have the first two intact to a great extent, but not the third. We are on the threshold of a new round of elections – the 15<sup>th</sup> general election to the Lok Sabha and Assembly election in three States – and political parties are vying with one another to win votes.

Most reprehensibly, efforts are made to acquire the support of criminals. In the 14<sup>th</sup> Lok Sabha, as many as 93 MPs had criminal charges pending against them. Their trial proceedings have not attained finality. Section 8 of the Representation of the People (RP) Act, 1951 requires a conviction for a period of over two years to disqualify a candidate from contesting. If he is found guilty of offence under special laws, he would stand disqualified irrespective of the period of sentence. The principle that is relied upon to protect the candidate from disqualification when serious charges are pending is that of criminal jurisprudence – that a person is presumed innocent unless found guilty.

However, this is only for the purpose of preventing punishment by way of incarceration or fine. There is no fundamental right to contest an election to Parliament or a Legislative Assembly. A statute can take away the right of such a person to contest, on the basis of the higher principle of maintaining the purity of elections. Under criminal law, there are at least three stages at which an accused can be relieved of charges. A magistrate trying an offence has first to take cognizance of the charge sheet and then satisfy himself that prima facie an offence has been made out, after applying his mind to the statements and the documents annexed to the Police Report. The case could be closed at this stage. Thereafter the accused has an opportunity at the time of framing of charges to show that no prima facie case is made out or that no reasonable grounds exist to suspect him of the commission of the offence. He would then be discharged.

Lastly, an accused could seek quashing of charges under Section 482 of the Criminal Procedure Code. It would, therefore, be incorrect to apply the presumption of innocence, in a wooden fashion, to the issue of disqualification of a candidate contesting elections without taking note of the damage that otherwise would be caused to the democratic process. Section 8 of the RP Act will have to be amended so that a person against whom charges have been framed by a court for an offence mentioned in Section 8(1), or a person who is charged with an offence which carries a sentence of imprisonment of more than two years, would stand disqualified.

However, it is only in a case where the charge sheet has been filed a year prior to the notification of elections that disqualification should apply. Otherwise a rival could easily file a false case and have a charge sheet framed, leaving no time for the accused to get a discharge or have the charge sheet set aside. In the absence of such an amendment to Section 8 of the RP Act, the Supreme Court in 2002 delivered a judgment in Association of Democratic Reforms, requiring every candidate to disclose, at the time of filing of nomination, any charges pending against him for offences that may involve punishment for a period above two years or otherwise. It will be a great day for India if, instead of an amendment to the RP Act, every party obtains from prospective candidates statement of the pending criminal cases against them and allots the ticket only to such among them who possess a clean record. Perhaps Section 29-A should be amended to incorporate in the Constitution and objectives of all parties that no candidate with criminal charges pending against him would be allotted the ticket.

The RP Act has applied a different yardstick in the case of one who is convicted while being an MP or MLA. In such a case, a conviction even for one of the serious offences mentioned in Section 8, or for a period exceeding two years, will not cause disqualification. In another case concerning a candidate in an election, the Supreme Court has held that not only would such candidate have to prefer an appeal or revision petition, but he would have to get a stay on the sentence and of the conviction, to prevent disqualification. This would mean the candidate would have to establish before the appellate court that the findings rendered against him by the trial court are unjustified or perverse. In the case of a sitting legislator, however, by reason of Section 8(4), the mere filing of an appeal would operate as a stay of disqualification, even if bail was refused and he obtained neither stay of conviction nor a stay of sentence, obviously, this would seem to be discriminatory and violative of the equality clause in Article 14 of the Constitution. Unfortunately, the Supreme Court appears to feel differently about the allegation of discrimination brought about between a sitting legislator and a candidate. The reasons it gives in *Prabhakaran v. Jayarajan* for why a legislator must be given special dispensation do not appear to be sound.

Which of the following is **not** true as explained in the passage?

- A) The Supreme Court feels that a legislator must be given special dispensation in contrast to other candidates
- B) Contesting an election to Parliament or a Legislative Assembly is a fundamental right as per the Constitution of India
- C) Political parties rope-in even criminals to support them, in order to win votes
- D) An independent judiciary, a free press, and free and fair elections are all pillars of democracy

---

**Question No. : 105**

**DIRECTIONS for the question:** Read the passage and answer the question based on it.

**PASSAGE III**

Over 60 years have passed since India got its independence. With the passage of time, one hoped, Indian democracy would become vibrant and strong. There are many pillars of democracy, including an independent judiciary, a free press, and free and fair elections. We have the first two intact to a great extent, but not the third. We are on the threshold of a new round of elections – the 15<sup>th</sup> general election to the Lok Sabha and Assembly election in three States – and political parties are vying with one another to win votes.

Most reprehensibly, efforts are made to acquire the support of criminals. In the 14<sup>th</sup> Lok Sabha, as many as 93 MPs had criminal charges pending against them. Their trial proceedings have not attained finality. Section 8 of the Representation of the People (RP) Act, 1951 requires a conviction for a period of over two years to disqualify a candidate from contesting. If he is found guilty of offence under special laws, he would stand disqualified irrespective of the period of sentence. The principle that is relied upon to protect the candidate from disqualification when serious charges are pending is that of criminal jurisprudence – that a person is presumed innocent unless found guilty.

However, this is only for the purpose of preventing punishment by way of incarceration or fine. There is no fundamental right to contest an election to Parliament or a Legislative Assembly. A statute can take away the right of such a person to contest, on the basis of the higher principle of maintaining the purity of elections. Under criminal law, there are at least three stages at which an accused can be relieved of charges. A magistrate trying an offence has first to take cognizance of the charge sheet and then satisfy himself that prima facie an offence has been made out, after applying his mind to the statements and the documents annexed to the Police Report. The case could be closed at this stage. Thereafter the accused has an opportunity at the time of framing of charges to show that no prima facie case is made out or that no reasonable grounds exist to suspect him of the commission of the offence. He would then be discharged.

Lastly, an accused could seek quashing of charges under Section 482 of the Criminal Procedure Code. It would, therefore, be incorrect to apply the presumption of innocence, in a wooden fashion, to the issue of disqualification of a candidate contesting elections without taking note of the damage that otherwise would be caused to the democratic process. Section 8 of the RP Act will have to be amended so that a person against whom charges have been framed by a court for an offence mentioned in Section 8(1), or a person who is charged with an offence which carries a sentence of imprisonment of more than two years, would stand disqualified.

However, it is only in a case where the charge sheet has been filed a year prior to the notification of elections that disqualification should apply. Otherwise a rival could easily file a false case and have a charge sheet framed, leaving no time for the accused to get a discharge or have the charge sheet set aside. In the absence of such an amendment to Section 8 of the RP Act, the Supreme Court in 2002 delivered a judgment in Association of Democratic Reforms, requiring every candidate to disclose, at the time of filing of nomination, any charges pending against him for offences that may involve punishment for a period above two years or otherwise. It will be a great day for India if, instead of an amendment to the RP Act, every party obtains from prospective candidates statement of the pending criminal cases against them and allots the ticket only to such among them who possess a clean record. Perhaps Section 29-A should be amended to incorporate in the Constitution and objectives of all parties that no candidate with criminal charges pending against him would be allotted the ticket.

The RP Act has applied a different yardstick in the case of one who is convicted while being an MP or MLA. In such a case, a conviction even for one of the serious offences mentioned in Section 8, or for a period exceeding two years, will not cause disqualification. In another case concerning a candidate in an election, the Supreme Court has held that not only would such candidate have to prefer an appeal or revision petition, but he would have to get a stay on the sentence and of the conviction, to prevent disqualification. This would mean the candidate would have to establish before the appellate court that the findings rendered against him by the trial court are unjustified or perverse. In the case of a sitting legislator, however, by reason of Section 8(4), the mere filing of an appeal would operate as a stay of disqualification, even if bail was refused and he obtained neither stay of conviction nor a stay of sentence, obviously, this would seem to be discriminatory and violative of the equality clause in Article 14 of the Constitution. Unfortunately, the Supreme Court appears to feel differently about the allegation of discrimination brought about between a sitting legislator and a candidate. The reasons it gives in Prabhakaran v. Jayarajan for why a legislator must be given special dispensation do not appear to be sound.

The RP Act requires a conviction of how many years minimum, to disqualify a candidate from contesting?

A) 3 years    B) 4 years    C) 5 years    D) 2 years

### **Question No. : 106**

**DIRECTIONS for the question:** Read the passage and answer the question based on it.

#### **PASSAGE III**

Over 60 years have passed since India got its independence. With the passage of time, one hoped, Indian democracy would become vibrant and strong. There are many pillars of democracy, including an independent judiciary, a free press, and free and fair elections. We have the first two intact to a great extent, but not the third. We are on the threshold of a new round of elections – the 15<sup>th</sup> general election to the Lok Sabha and Assembly election in three States – and political parties are vying with one another to win votes.

Most reprehensibly, efforts are made to acquire the support of criminals. In the 14<sup>th</sup> Lok Sabha, as many as 93 MPs had criminal

charges pending against them. Their trial proceedings have not attained finality. Section 8 of the Representation of the People (RP) Act, 1951 requires a conviction for a period of over two years to disqualify a candidate from contesting. If he is found guilty of offence under special laws, he would stand disqualified irrespective of the period of sentence. The principle that is relied upon to protect the candidate from disqualification when serious charges are pending is that of criminal jurisprudence – that a person is presumed innocent unless found guilty.

However, this is only for the purpose of preventing punishment by way of incarceration or fine. There is no fundamental right to contest an election to Parliament or a Legislative Assembly. A statute can take away the right of such a person to contest, on the basis of the higher principle of maintaining the purity of elections. Under criminal law, there are at least three stages at which an accused can be relieved of charges. A magistrate trying an offence has first to take cognizance of the charge sheet and then satisfy himself that prima facie an offence has been made out, after applying his mind to the statements and the documents annexed to the Police Report. The case could be closed at this stage. Thereafter the accused has an opportunity at the time of framing of charges to show that no prima facie as is made out or that no reasonable grounds exist to suspect him of the commission of the offence. He would then be discharged.

Lastly, an accused could seek quashing of charges under Section 482 of the Criminal Procedure Code. It would, therefore, be incorrect to apply the presumption of innocence, in a wooden fashion, to the issue of disqualification of a candidate contesting elections without taking note of the damage that otherwise would be caused to the democratic process. Section 8 of the RP Act will have to be amended so that a person against whom charges have been framed by a court for an offence mentioned in Section 8(1), or a person who is charged with an offence which carries a sentence of imprisonment of more than two years, would stand disqualified.

However, it is only in a case where the charge sheet has been filed a year prior to the notification of elections that disqualification should apply. Otherwise a rival could easily file a false case and have a charge sheet framed, leaving no time for the accused to get a discharge or have the charge sheet set aside. In the absence of such an amendment to Section 8 of the RP Act, the Supreme Court in 2002 delivered a judgment in Association of Democratic Reforms, requiring every candidate to disclose, at the time of filing of nomination, any charges pending against him for offences that may involve punishment for a period above two years or otherwise. It will be a great day for India if, instead of an amendment to the RP Act, every party obtains from prospective candidates statement of the pending criminal cases against them and allots the ticket only to such among them who possess a clean record. Perhaps Section 29-A should be amended to incorporate in the Constitution and objectives of all parties that no candidate with criminal charges pending against him would be allotted the ticket.

The RP Act has applied a different yardstick in the case of one who is convicted while being an MP or MLA. In such a case, a conviction even for one of the serious offences mentioned in Section 8, or for a period exceeding two years, will not cause disqualification. In another case concerning a candidate in an election, the Supreme Court has held that not only would such candidate have to prefer an appeal or revision petition, but he would have to get a stay on the sentence and of the conviction, to prevent disqualification. This would mean the candidate would have to establish before the appellate court that the findings rendered against him by the trial court are unjustified or perverse. In the case of a sitting legislator, however, by reason of Section 8(4), the mere filing of an appeal would operate as a stay of disqualification, even if bail was refused and he obtained neither stay of conviction nor a stay of sentence, obviously, this would seem to be discriminatory and violative of the equality clause in Article 14 of the Constitution. Unfortunately, the Supreme Court appears to feel differently about the allegation of discrimination brought about between a sitting legislator and a candidate. The reasons it gives in Prabhakaran v. Jayarajan for why a legislator must be given special dispensation do not appear to be sound.

In this passage the author suggests that it would be in the fitness of things if

- A) Political parties verify the police records of all ticket-seekers in order to ascertain deserving candidates
- B) Political parties give tickets only to those candidates who have a clean record
- C) Criminals voluntarily refrain from participating in elections
- D) All these

---

**Question No. : 107**

**DIRECTIONS for the question:** Read the passage and answer the question that follows.

**PASSAGE III**

Over 60 years have passed since India got its independence. With the passage of time, one hoped, Indian democracy would become vibrant and strong. There are many pillars of democracy, including an independent judiciary, a free press, and free and fair elections. We have the first two intact to a great extent, but not the third. We are on the threshold of a new round of elections – the 15<sup>th</sup> general election to the Lok Sabha and Assembly election in three States – and political parties are vying with one another to win votes.

Most reprehensibly, efforts are made to acquire the support of criminals. In the 14<sup>th</sup> Lok Sabha, as many as 93 MPs had criminal charges pending against them. Their trial proceedings have not attained finality. Section 8 of the Representation of the People (RP) Act, 1951 requires a conviction for a period of over two years to disqualify a candidate from contesting. If he is found guilty of offence under special laws, he would stand disqualified irrespective of the period of sentence. The principle that is relied upon to protect the candidate from disqualification when serious charges are pending is that of criminal jurisprudence – that a person is

presumed innocent unless found guilty.

However, this is only for the purpose of preventing punishment by way of incarceration or fine. There is no fundamental right to contest an election to Parliament or a Legislative Assembly. A statute can take away the right of such a person to contest, on the basis of the higher principle of maintaining the purity of elections. Under criminal law, there are at least three stages at which an accused can be relieved of charges. A magistrate trying an offence has first to take cognizance of the charge sheet and then satisfy himself that prima facie an offence has been made out, after applying his mind to the statements and the documents annexed to the Police Report. The case could be closed at this stage. Thereafter the accused has an opportunity at the time of framing of charges to show that no prima facie case is made out or that no reasonable grounds exist to suspect him of the commission of the offence. He would then be discharged.

Lastly, an accused could seek quashing of charges under Section 482 of the Criminal Procedure Code. It would, therefore, be incorrect to apply the presumption of innocence, in a wooden fashion, to the issue of disqualification of a candidate contesting elections without taking note of the damage that otherwise would be caused to the democratic process. Section 8 of the RP Act will have to be amended so that a person against whom charges have been framed by a court for an offence mentioned in Section 8(1), or a person who is charged with an offence which carries a sentence of imprisonment of more than two years, would stand disqualified.

However, it is only in a case where the charge sheet has been filed a year prior to the notification of elections that disqualification should apply. Otherwise a rival could easily file a false case and have a charge sheet framed, leaving no time for the accused to get a discharge or have the charge sheet set aside. In the absence of such an amendment to Section 8 of the RP Act, the Supreme Court in 2002 delivered a judgment in Association of Democratic Reforms, requiring every candidate to disclose, at the time of filing of nomination, any charges pending against him for offences that may involve punishment for a period above two years or otherwise. It will be a great day for India if, instead of an amendment to the RP Act, every party obtains from prospective candidates statement of the pending criminal cases against them and allots the ticket only to such among them who possess a clean record. Perhaps Section 29-A should be amended to incorporate in the Constitution and objectives of all parties that no candidate with criminal charges pending against him would be allotted the ticket.

The RP Act has applied a different yardstick in the case of one who is convicted while being an MP or MLA. In such a case, a conviction even for one of the serious offences mentioned in Section 8, or for a period exceeding two years, will not cause disqualification. In another case concerning a candidate in an election, the Supreme Court has held that not only would such candidate have to prefer an appeal or revision petition, but he would have to get a stay on the sentence and of the conviction, to prevent disqualification. This would mean the candidate would have to establish before the appellate court that the findings rendered against him by the trial court are unjustified or perverse. In the case of a sitting legislator, however, by reason of Section 8(4), the mere filing of an appeal would operate as a stay of disqualification, even if bail was refused and he obtained neither stay of conviction nor a stay of sentence, obviously, this would seem to be discriminatory and violative of the equality clause in Article 14 of the Constitution. Unfortunately, the Supreme Court appears to feel differently about the allegation of discrimination brought about between a sitting legislator and a candidate. The reasons it gives in Prabhakaran v. Jayarajan for why a legislator must be given special dispensation do not appear to be sound.

Which of the following is true?

- A) Under criminal law there are only three stages at which an accused can be relieved of charges
- B) Criminal jurisprudence means a person is considered innocent unless proved to be guilty
- C) A sitting legislator cannot contest elections if a criminal case is pending against him
- D) All these

### **Question No. : 108**

**DIRECTIONS for the question:** Answer the question that follows.

Among the several citrus fruits, acid lime is one of the most prolific yielder, and this crop can be profitably grown in the tropical plains and hill slopes with scant water resources. It comes up well in sandy loam rich in organic residues endowed with adequate drainage. Good quality grafts are ideal for raising a healthy and productive lime garden. The grafts yield true-to-parent plants of high yielding potential, and are early bearers. They also bear big fruits all through the year. However, the longevity of the grafts is less as compared with the trees developed from the seeds, according to experts. Seeds extracted from healthy fruits from proven mother plants will develop into robust plants with longer life.

The main field should be thoroughly tilled, and ripe farmyard manure should be incorporated well with the final ploughing and land leveling. Green manuring will also help in increasing the soil's organic matter content, and in improving the soil structure. A spacing of 6 m by 6 m is recommended for raising acid lime plantation. Pits of 90 cm by 90 cm are to be dug, and filled up with adequate quantities of vermin-compost, coir-pith compost and small amounts of powdered neem cake and bio-fertilizers. About 250 plants can be accommodated in a hectare. Regular irrigation is essential in the early stages of crop establishment. Drip irrigation, pitcher irrigation and micro-sprinklers have been found to give good results, besides saving considerable quantities of water and energy.

In the initial months after planting, sufficient shade should be provided to protect the tender seedlings and grafts from harsh sun. Planting Sesbania (agathi) around the young plants will be effective in ensuring the required shade, besides enriching the soil. Several annual crops such as pulses and vegetables, can be raised as intercrops in the initial years. The plants should be trained to

grow vertically by discouraging the lateral shoots and other growths. Regular pruning to get the desired dome-shape should be done when the plants are still young. The field should be kept free of weed and other unwanted vegetation. Regular manuring should be done twice annually. The nutrients, mostly organic in nature, should be incorporated at the base of the plants, and watered immediately. The plants particularly respond well to liberal application of organic amendments. The micro-nutrient deficiencies will not be noticed in acid lime plantations raised with rich organic nutrients.

Plants protection is an important aspect in acid lime cultivation. The plants should be sprayed with cow's urine, vermin-wash and other botanical insecticides to ward off leaf-munching caterpillars and other sucking and chewing pests. Need-based application after monitoring the field for pest incidence will be rewarding. Spraying should be taken up at an interval of ten days, and it will also improve the fruit setting and fruit development. The plants will establish well and start yielding from the second year of planting. Though the fruits can be had all round the year, some major flushes can be harvested in December-January and July-August seasons. A well nurtured grown-up tree can yield as high as 3000 fruits a year. The profit for the growers depends on the season and the prevailing market rate. With an average price of Rs. 0.35 a fruit, a farmer can realize about Rs. 2.5 lakhs from a hectare of a healthy and well-tended acid lime garden.

It can be inferred from the passage that

- I. the quality and size of fruits depend upon the longevity of the plants.
- II. the yield of grafts is less as compared to the trees developed from the seeds.
- III. there is not much of a difference between grafts and the trees developed from the seeds, except in life.

Which of the above statements is/are true?

- A) Only III    B) Only II    C) I and II    D) I, II and III

---

### Question No. : 109

**DIRECTIONS for the question:** Answer the question that follows.

Among the several citrus fruits, acid lime is one of the most prolific yielder, and this crop can be profitably grown in the tropical plains and hill slopes with scant water resources. It comes up well in sandy loam rich in organic residues endowed with adequate drainage. Good quality grafts are ideal for raising a healthy and productive lime garden. The grafts yield true-to-parent plants of high yielding potential, and are early bearers. They also bear big fruits all through the year. However, the longevity of the grafts is less as compared with the trees developed from the seeds, according to experts. Seeds extracted from healthy fruits from proven mother plants will develop into robust plants with longer life.

The main field should be thoroughly tilled, and ripe farmyard manure should be incorporated well with the final ploughing and land leveling. Green manuring will also help in increasing the soil's organic matter content, and in improving the soil structure. A spacing of 6 m by 6 m is recommended for raising acid lime plantation. Pits of 90 cm by 90 cm are to be dug, and filled up with adequate quantities of vermin-compost, coir-pith compost and small amounts of powdered neem cake and bio-fertilizers. About 250 plants can be accommodated in a hectare. Regular irrigation is essential in the early stages of crop establishment. Drip irrigation, pitcher irrigation and micro-sprinklers have been found to give good results, besides saving considerable quantities of water and energy.

In the initial months after planting, sufficient shade should be provided to protect the tender seedlings and grafts from harsh sun. Planting *Sesbania* (agathi) around the young plants will be effective in ensuring the required shade, besides enriching the soil. Several annual crops such as pulses and vegetables, can be raised as intercrops in the initial years. The plants should be trained to grow vertically by discouraging the lateral shoots and other growths. Regular pruning to get the desired dome-shape should be done when the plants are still young. The field should be kept free of weed and other unwanted vegetation. Regular manuring should be done twice annually. The nutrients, mostly organic in nature, should be incorporated at the base of the plants, and watered immediately. The plants particularly respond well to liberal application of organic amendments. The micro-nutrient deficiencies will not be noticed in acid lime plantations raised with rich organic nutrients.

Plants protection is an important aspect in acid lime cultivation. The plants should be sprayed with cow's urine, vermin-wash and other botanical insecticides to ward off leaf-munching caterpillars and other sucking and chewing pests. Need-based application after monitoring the field for pest incidence will be rewarding. Spraying should be taken up at an interval of ten days, and it will also improve the fruit setting and fruit development. The plants will establish well and start yielding from the second year of planting. Though the fruits can be had all round the year, some major flushes can be harvested in December-January and July-August seasons. A well nurtured grown-up tree can yield as high as 3000 fruits a year. The profit for the growers depends on the season and the prevailing market rate. With an average price of Rs. 0.35 a fruit, a farmer can realize about Rs. 2.5 lakhs from a hectare of a healthy and well-tended acid lime garden.

For a good growth of acid-lime crop, all of the following are essential *except*

- A) water-logged tropical plains    B) good irrigation with adequate drainage    C) rich residues of organic nutrients  
D) hill slopes with poor water resources

### Question No. : 110

**DIRECTIONS for the question:** Answer the question that follows.



Among the several citrus fruits, acid lime is one of the most prolific yielder, and this crop can be profitably grown in the tropical plains and hill slopes with scant water resources. It comes up well in sandy loam rich in organic residues endowed with adequate drainage. Good quality grafts are ideal for raising a healthy and productive lime garden. The grafts yield true-to-parent plants of high yielding potential, and are early bearers. They also bear big fruits all through the year. However, the longevity of the grafts is less as compared with the trees developed from the seeds, according to experts. Seeds extracted from healthy fruits from proven mother plants will develop into robust plants with longer life.

The main field should be thoroughly tilled, and ripe farmyard manure should be incorporated well with the final ploughing and land leveling. Green manuring will also help in increasing the soil's organic matter content, and in improving the soil structure. A spacing of 6 m by 6 m is recommended for raising acid lime plantation. Pits of 90 cm by 90 cm are to be dug, and filled up with adequate quantities of vermin-compost, coir-pith compost and small amounts of powdered neem cake and bio-fertilizers. About 250 plants can be accommodated in a hectare. Regular irrigation is essential in the early stages of crop establishment. Drip irrigation, pitcher irrigation and micro-sprinklers have been found to give good results, besides saving considerable quantities of water and energy.

In the initial months after planting, sufficient shade should be provided to protect the tender seedlings and grafts from harsh sun. Planting *Sesbania* (agathi) around the young plants will be effective in ensuring the required shade, besides enriching the soil. Several annual crops such as pulses and vegetables, can be raised as intercrops in the initial years. The plants should be trained to grow vertically by discouraging the lateral shoots and other growths. Regular pruning to get the desired dome-shape should be done when the plants are still young. The field should be kept free of weed and other unwanted vegetation. Regular manuring should be done twice annually. The nutrients, mostly organic in nature, should be incorporated at the base of the plants, and watered immediately. The plants particularly respond well to liberal application of organic amendments. The micro-nutrient deficiencies will not be noticed in acid lime plantations raised with rich organic nutrients.

Plants protection is an important aspect in acid lime cultivation. The plants should be sprayed with cow's urine, vermin-wash and other botanical insecticides to ward off leaf-munching caterpillars and other sucking and chewing pests. Need-based application after monitoring the field for pest incidence will be rewarding. Spraying should be taken up at an interval of ten days, and it will also improve the fruit setting and fruit development. The plants will establish well and start yielding from the second year of planting. Though the fruits can be had all round the year, some major flushes can be harvested in December-January and July-August seasons. A well nurtured grown-up tree can yield as high as 3000 fruits a year. The profit for the growers depends on the season and the prevailing market rate. With an average price of Rs. 0.35 a fruit, a farmer can realize about Rs. 2.5 lakhs from a hectare of a healthy and well-tended acid lime garden.

The author of the passage could be

- A) an agricultural activist    B) an agricultural expert    C) a farmer    D) an analyst

---

### Question No. : 111

**DIRECTIONS for the question:** Answer the question that follows.

Among the several citrus fruits, acid lime is one of the most prolific yielder, and this crop can be profitably grown in the tropical plains and hill slopes with scant water resources. It comes up well in sandy loam rich in organic residues endowed with adequate drainage. Good quality grafts are ideal for raising a healthy and productive lime garden. The grafts yield true-to-parent plants of high yielding potential, and are early bearers. They also bear big fruits all through the year. However, the longevity of the grafts is less as compared with the trees developed from the seeds, according to experts. Seeds extracted from healthy fruits from proven mother plants will develop into robust plants with longer life.

The main field should be thoroughly tilled, and ripe farmyard manure should be incorporated well with the final ploughing and land leveling. Green manuring will also help in increasing the soil's organic matter content, and in improving the soil structure. A spacing of 6 m by 6 m is recommended for raising acid lime plantation. Pits of 90 cm by 90 cm are to be dug, and filled up with adequate quantities of vermin-compost, coir-pith compost and small amounts of powdered neem cake and bio-fertilizers. About 250 plants can be accommodated in a hectare. Regular irrigation is essential in the early stages of crop establishment. Drip irrigation, pitcher irrigation and micro-sprinklers have been found to give good results, besides saving considerable quantities of water and energy.

In the initial months after planting, sufficient shade should be provided to protect the tender seedlings and grafts from harsh sun. Planting *Sesbania* (agathi) around the young plants will be effective in ensuring the required shade, besides enriching the soil. Several annual crops such as pulses and vegetables, can be raised as intercrops in the initial years. The plants should be trained to grow vertically by discouraging the lateral shoots and other growths. Regular pruning to get the desired dome-shape should be done when the plants are still young. The field should be kept free of weed and other unwanted vegetation. Regular manuring should be done twice annually. The nutrients, mostly organic in nature, should be incorporated at the base of the plants, and watered immediately. The plants particularly respond well to liberal application of organic amendments. The micro-nutrient deficiencies will not be noticed in acid lime plantations raised with rich organic nutrients.

Plants protection is an important aspect in acid lime cultivation. The plants should be sprayed with cow's urine, vermin-wash and other botanical insecticides to ward off leaf-munching caterpillars and other sucking and chewing pests. Need-based application after monitoring the field for pest incidence will be rewarding. Spraying should be taken up at an interval of ten days, and it will also improve the fruit setting and fruit development. The plants will establish well and start yielding from the second year of planting. Though the

fruits can be had all round the year, some major flushes can be harvested in December-January and July-August seasons. A well nurtured grown-up tree can yield as high as 3000 fruits a year. The profit for the growers depends on the season and the prevailing market rate. With an average price of Rs. 0.35 a fruit, a farmer can realize about Rs. 2.5 lakhs from a hectare of a healthy and well-tended acid lime garden.

According to the passage, the acid lime

- A) is the most prolific yielder among all fruits    B) allows several annual crops like pulses to be grown throughout its lifetime  
C) allows farmers to realise about 25 lakhs from a 10 hectare of healthy and well-tended acid lime garden    D) None of the above

**Question No. : 112**

**DIRECTIONS for the question:** Answer the question that follows.

Among the several citrus fruits, acid lime is one of the most prolific yielder, and this crop can be profitably grown in the tropical plains and hill slopes with scant water resources. It comes up well in sandy loam rich in organic residues endowed with adequate drainage. Good quality grafts are ideal for raising a healthy and productive lime garden. The grafts yield true-to-parent plants of high yielding potential, and are early bearers. They also bear big fruits all through the year. However, the longevity of the grafts is less as compared with the trees developed from the seeds, according to experts. Seeds extracted from healthy fruits from proven mother plants will develop into robust plants with longer life.

The main field should be thoroughly tilled, and ripe farmyard manure should be incorporated well with the final ploughing and land leveling. Green manuring will also help in increasing the soil's organic matter content, and in improving the soil structure. A spacing of 6 m by 6 m is recommended for raising acid lime plantation. Pits of 90 cm by 90 cm are to be dug, and filled up with adequate quantities of vermin-compost, coir-pith compost and small amounts of powdered neem cake and bio-fertilizers. About 250 plants can be accommodated in a hectare. Regular irrigation is essential in the early stages of crop establishment. Drip irrigation, pitcher irrigation and micro-sprinklers have been found to give good results, besides saving considerable quantities of water and energy.

In the initial months after planting, sufficient shade should be provided to protect the tender seedlings and grafts from harsh sun. Planting Sesbania (agathi) around the young plants will be effective in ensuring the required shade, besides enriching the soil. Several annual crops such as pulses and vegetables, can be raised as intercrops in the initial years. The plants should be trained to grow vertically by discouraging the lateral shoots and other growths. Regular pruning to get the desired dome-shape should be done when the plants are still young. The field should be kept free of weed and other unwanted vegetation. Regular manuring should be done twice annually. The nutrients, mostly organic in nature, should be incorporated at the base of the plants, and watered immediately. The plants particularly respond well to liberal application of organic amendments. The micro-nutrient deficiencies will not be noticed in acid lime plantations raised with rich organic nutrients.

Plants protection is an important aspect in acid lime cultivation. The plants should be sprayed with cow's urine, vermin-wash and other botanical insecticides to ward off leaf-munching caterpillars and other sucking and chewing pests. Need-based application after monitoring the field for pest incidence will be rewarding. Spraying should be taken up at an interval of ten days, and it will also improve the fruit setting and fruit development. The plants will establish well and start yielding from the second year of planting. Though the fruits can be had all round the year, some major flushes can be harvested in December-January and July-August seasons. A well nurtured grown-up tree can yield as high as 3000 fruits a year. The profit for the growers depends on the season and the prevailing market rate. With an average price of Rs. 0.35 a fruit, a farmer can realize about Rs. 2.5 lakhs from a hectare of a healthy and well-tended acid lime garden.

All of the following insecticides can be sprayed on acid-lime crop EXCEPT

- A) cow's urine    B) powered neem    C) vermin-wash    D) manure

**DIRECTION for the question:** Choose the order of the sentences marked A, B, C, D and E to form a logical paragraph.

**Question No. : 113**

- A. The use of sovereign power poses difficult choices because whether it has been used sensibly or not can be determined only after the event.  
B. Faced with having to stimulate the economy in the sharpest and worst downturn since 1929, governments have responded by cutting taxes and spending more.  
C. That has forced governments to borrow more but, when gorillas walk on Main Street, others have to make way.  
D. The idea of monetizing the fiscal deficit, which is gathering steam rather too quickly because the US has also decided to do so, is a good example of this.  
E. The former has, however, made the latter harder because how do you spend more when you are earning less?

- A) ABEDC    B) BCDEA    C) AECDB    D) ADBEC

**DIRECTION for the question:** Choose the order of the sentences marked A, B, C, D and E to form a logical paragraph.

**Question No. : 114**

- A. It is that time of the year when the election finds its way back to being the central topic of discussion.
  - B. Unlike India, in other democracies, ranging from the US to Zimbabwe, if no candidate secures 51 per cent of the votes, the top two would be up for a re-run; no doubt that this comes with additional costs and time.
  - C. To elaborate, say there are three contestants in a constituency and each of them gets 40, 35 and 25 per cent of polled votes respectively.
  - D. Leaving aside the usual rhetoric, let us take up a relatively less discussed, nevertheless important, question : If more than 60 per cent of the elected representatives in Parliament have less than 51 per cent of the polled votes, is our democracy really effective?
  - E. Are we optimizing taxpayers' money at the cost of democracy?
- A) BDCAE   B) DEBAC   C) ADCBE   D) CDEAB
- 

**DIRECTION for the question:** Choose the order of the sentences marked A, B, C, D and E to form a logical paragraph.

**Question No. : 115**

- A. Last March, I was invited to present a paper on the topic of whether the mistakes of the 20<sup>th</sup> century would be repeated in the 21<sup>st</sup> century as well.
  - B. The economic crisis hadn't become grave then.
  - C. But today the world is in the midst of the biggest economic crisis since 1929.
  - D. The key difference between then and now is that the old power structures have finally disappeared.
  - E. Now even the US is pleading for financial help from China.
- A) CDEAB   B) ABCDE   C) BCADE   D) DEABC

**DIRECTION for the question:** Choose the order of the sentences marked A, B, C, D and E to form a logical paragraph.

**Question No. : 116**

- A. Jawaharlal Nehru, despite his heavy schedule both as a Prime Minister and as a freedom hero constantly in demand, made it a point to reply to letters under his personal signature within a couple of days of receiving them.
  - B. That was the time when, following the Chinese invasion of India in October 1962, the load on Nehru was near-unbearable and he was also in declining health.
  - C. Even so, he replied to Ramanujam on the very day (April 9) the letter reached him, setting out in detail his approach.
  - D. What a contrast are the following examples of political decency of bygone days with conditions obtaining today !
  - E. On April 8, 1963 K.S. Ramanujam, a highly regarded journalist of Madras, wrote to him about the corrupt practices of Ministers, especially in the matter of collection of funds for elections.
- A) DAEBBC   B) CDEAB   C) ABCDE   D) BCDAE
- 

**DIRECTION for the question:** The following contains a paragraph followed by a question. As your answer select the best of the options given.

**Question No. : 117**

Consumers are not so easily manipulated as they are often painted. They may know what they want, and what they want may be greatly different from what other people believe they need.

Which of the following statements, if true, most weakens the above argument?

- A) Most people continue to buy the same brand of a product year after year
- B) Companies that advertise the most sell the most products
- C) Store shelves packed with a variety of different brands have the potential to confuse the consumer
- D) People who shop with others rarely argue with their companions

**DIRECTION for the question:** The following contains a paragraph followed by a question. As your answer select the best of the options

given.

**Question No. : 118**

Unfortunately, only 11 percent of the driving public uses regular seat belts. Automatic restraints are the answers, and the quicker they are required, the sooner highway deaths will be reduced.

The author's conclusion is based upon which of the following assumptions?

- A) Only 11 percent of the driving public cares about passengers' lives
- B) The use of restraints reduces highway deaths
- C) Regular seat belts are inadequate safety devices
- D) It is unfortunate that 89 percent of the driving public does not use regular seat belts

---

**DIRECTION for the question:** The following contains a paragraph followed by a question. As your answer select the best of the options given.

**Question No. : 119**

Developed countries have made adequate provisions for social security of senior citizens. State insurers (as well as private ones) offer Medicare and pension benefits to people who can no longer earn. In India, with the collapse of the joint family system, the traditional shelter of the elderly has disappeared. And a state faced with a financial crunch is not in a position to provide social security. So it is advisable that the working population give serious thought to building a financial base for itself.

Which one of the following, if it were to happen, weakens the conclusion drawn in the above passage the most?

- A) India is on a path of development that will take it to a developed country's status, with all its positive and negative implications
- B) The insurance sector is underdeveloped and trends indicate that it will be extensively privatized in the future
- C) The investable income of the working population as a proportion of its total income will grow in the future
- D) If the working population builds a stronger financial base, there will be revival of the joint family system

**DIRECTION for the question:** The following contains a paragraph followed by a question. As your answer select the best of the options given.

**Question No. : 120**

Organizations are often defined as groups of people who come together to pursue a common goal. But more often than not, goals diverge as much as they converge, making the rationality of the overall organization no more than an elusive ideal. Beneath the collective irrationality, however, organizations are often operating in a way that is eminently rational from the standpoint of the individuals, groups and coalitions directly involved.

Which of the following can be inferred from the above passage?

- A) As individuals, groups or coalitions in an organization pursue their own interest, the conceptual issues of rational behavior get blurred
- B) Although conceptually, an organization may appear to be irrational – behaviors of individuals, groups and coalitions in the organization may be rational
- C) If all employees of an organization pursue their individual goals, one can never have an organization that behaves rationally
- D) Since people are essentially irrational, the ideal of building a rational organization is elusive

---

**Section : Quant**

**DIRECTION for the question:** Mark the best option

**Question No. : 121**

Krishan has some hens and some cows. If the total number of animal heads are 59 and the total number of feet are 190, how many cows does Krishan have?

- A) 36
- B) 32
- C) 23
- D) Cannot be determined

**DIRECTION for the question:** Mark the best option

**Question No. : 122**

Vanita bought a watch with 24% discount on the selling price. If the watch cost her Rs. 779/-, what was the original selling price of the watch?

- A) Rs. 1,000/-
  - B) Rs. 950/-
  - C) Rs. 1,025/-
  - D) Cannot be determined
-

**DIRECTION for the question:** Mark the best option

**Question No. : 123**

The cost of 13 kg of sugar is Rs. 195/-. The cost of 17 kg. of rice is Rs. 544/- and the cost of 21 kg. of wheat is Rs. 336/-. What is the total cost of 21 kg of sugar, 26 kg of rice and 19 kg of wheat?

- A) Rs. 1,451/-    B) Rs. 1,306/-    C) Rs. 1,500/-    D) Rs. 1,636/-

**DIRECTION for the question:** Mark the best option.

**Question No. : 124**

The difference between 38% of a number and 24% of the same number is 135.10. What is 40% of that number?

- A) 394    B) 370    C) 378    D) 386
- 

**DIRECTION for the question:** Mark the best option

**Question No. : 125**

Asmita invests an amount of Rs. 9,535/- at 4 % p.a. to obtain a total amount of Rs. 11,442/- on simple interest after a certain period. For how many years did she invest the amount to obtain the total sum?

- A) 10 years    B) 2 years    C) 5 years    D) 4 years

**DIRECTION for the question:** Mark the best option

**Question No. : 126**

The sum of money is to be divided amongst A, B and C in the respective ratio of 3:4:5 and another sum of money is to be divided between E and F equally. If F got Rs. 1,050/- less than A, how much amount did B receive?

- A) Rs. 750/-    B) Rs. 2,000/-    C) Rs. 1,500/-    D) Cannot be determined
- 

**DIRECTION for the question:** Mark the best option

**Question No. : 127**

In an examination it is required to get 296 of the total maximum aggregate marks to pass. A student gets 259 marks and is declared failed. The difference of marks obtained by the student and that required to pass is 5%. What are the maximum aggregate marks a student can get?

- A) 690    B) 780    C) 740    D) Cannot be determined

**DIRECTION for the question:** Mark the best option

**Question No. : 128**

The price of sugar is increased by 25%. Find by how much percent the consumption of sugar be decreased so as not to increase the expenditure?

- A) 25%    B) 40%    C) 20%    D) 30%
- 

**DIRECTION for the question:** Mark the best option

**Question No. : 129**

The average of 5 consecutive odd numbers A, B, C, D and E is 41. What is the product of A & E?

- A) 1677    B) 1517    C) 1665    D) 1591

**DIRECTION for the question:** Mark the best option

**Question No. : 130**

The average age of a woman and her daughter is 42 years. The ratio of their ages is 2 : 1 respectively. What is the daughter's age?

- A) 28 years    B) 48 years    C) 52 years    D) 32 years
- 

**DIRECTION for the question:** Mark the best option

**Question No. : 131**

A car travels a distance of 45 km at the speed of 15 km/hr. It covers the next 50 km of its journey at the speed of 25km/hr and the last 25 km of its journey at the speed of 15 km/hr. What is the average speed of the car?

- A) 40 km/hr    B) 24 km/hr    C) 15 km/hr    D) 18 km/hr

**DIRECTION for the question:** Mark the best option

**Question No. : 132**

A man sells a book at a profit of 20%. If he had bought it at 20% less and sold it for Rs. 18 less, he would have gained 25%. The cost price of the book is

- A) Rs. 80    B) Rs. 70    C) Rs. 60    D) Rs. 90
- 

**DIRECTION for the question:** Mark the best option

**Question No. : 133**

A car travels a distance of 170 km in 2 hours partly at a speed of 100 km/h and partly at 50 km/h. The distance travelled at a speed of 50 km/h is

- A) 50 km    B) 40 km    C) 30 km    D) 60 km

**DIRECTION for the question:** Mark the best option

**Question No. : 134**

A train is scheduled to cover the distance between two stations 46 km apart in one hour. If it travels 25 km at a speed of 40 km/h, find the speed for the remaining journey to complete it in the scheduled time.

- A) 66 km/h    B) 56 km/h    C) 46 km/h    D) 36 km/h
- 

**DIRECTION for the question:** Mark the best option

**Question No. : 135**

In a 400 metres race, A gives B a start of 5 seconds and beats him by 15 metres. In another race of 400 metres, A beats B by  $7\frac{1}{7}$  seconds. Their speeds are

- A) 6 m/s, 7 m/s respectively    B) 5 m/s, 7 m/s respectively    C) 8 m/s, 7 m/s respectively    D) 9 m/s, 7 m/s respectively

**DIRECTION for the question:** Mark the best option

**Question No. : 136**

A cube of side 4 units is painted red on two opposite faces, black on two opposite faces, and green and black on the two remaining faces. If it is cut into 64 equal cubes, then how many cubes will have exactly one black coloured face and remaining 5 unpainted faces?

- A) 12   B) 16   C) 32   D) 8
- 

**DIRECTION for the question:** Mark the best option

**Question No. : 137**

A toy cube is painted orange on all sides. It is cut into 64 smaller cubes of equal size. How many smaller cubes are not painted at all?

- A) 16   B) 8   C) 4   D) 20
- 

**DIRECTION for the question:** Mark the best option

**Question No. : 138**

What should be subtracted from 15, 28, 20 and 38 so that the remaining numbers may be proportional?

- A) 6   B) 4   C) 2   D) None of these
- 

**DIRECTION for the question:** Mark the best option.

**Question No. : 139**

The incomes of Gupta and Verma are in the ratio 9 : 4 and their expenditures are in the ratio 7 : 3. If each saves Rs.2000, then Gupta's expenditure is

- A) Rs. 70,000   B) Rs. 80,000   C) Rs. 60,000   D) None of these
- 

**DIRECTION for the question:** Mark the best option.

**Question No. : 140**

There are 6 multiple choice questions in an examination. How many sequences of answers are possible, if the first three questions have 4 choices each and the next three have 5 each?

- A) 4000   B) 5000   C) 6000   D) 8000
- 

**DIRECTION for the question:** Mark the best option.

**Question No. : 141**

A number lock on a suitcase has 3 wheels, each labelled with 10 digits from 0 to 9. If opening of the lock is a particular sequence of three digits with no repeats, how many such sequences will be possible?

- A) 680   B) 760   C) 720   D) 780
- 

**DIRECTION for the question:** Mark the best option.

**Question No. : 142**

Eight students are participating in a race. In how many ways can the first three prizes be won?

- A) 304   B) 720   C) 504   D) 336
- 

**DIRECTION for the question:** Mark the best option.

**Question No. : 143**

A rectangular farm has to be fenced on one long side, one short side and the diagonal. If the cost of fencing is Rs. 100 per m, the area of

the farm is  $1200 \text{ m}^2$  and the short side is 30 m long, how much would the job cost?

- A) Rs. 14,000    B) Rs. 12,000    C) Rs. 7000    D) Rs. 15,000

**DIRECTION for the question:** Mark the best option.

**Question No. : 144**

Length of a rectangular blackboard is 8 m more than that of its breadth. If its length is increased by 7 m and its breadth is decreased by 4 m, its area remains unchanged. The length and breadth of the rectangular blackboard is

- A) 24 m, 16 m    B) 20 m, 24 m    C) 28 m, 20 m    D) 28 m, 16 m
- 

**DIRECTION for the question:** Mark the best option.

**Question No. : 145**

One test tube contains some acid and another test tube contains an equal quantity of water. To prepare a solution, 20 grams of the acid is poured into the second test tube. Then, two-thirds of the so-formed solution is poured from the second tube into the first. If the fluid in the first test tube is four times that in the second, what quantity of water was taken initially?

- A) 80 grams    B) 60 grams    C) 40 grams    D) None of these

**DIRECTION for the question:** Mark the best option.

**Question No. : 146**

The average age of 3 children in a family is 20% of the average age of the father and the eldest child. The total age of the mother and the youngest child is 39 years. If the father's age is 26 years, what is the age of the second child?

- A) 20 years    B) 18 years    C) 15 years    D) Cannot be determined
- 

**DIRECTION for the question:** Mark the best option.

**Question No. : 147**

A man buys a house for Rs. 5 lakhs and rents it. He puts 12.5 % of each month's rent aside for repairs, pays Rs. 1660 as annual taxes and realizes 10% on his investments thereafter. The monthly rent of the house is

- A) Rs. 4920    B) Rs. 2500    C) Rs. 2460    D) Rs. 5000

**DIRECTION for the question:** Mark the best option.

**Question No. : 148**

Two-third of a consignment was sold at a profit of 5% and the remainder at a loss of 2%. If the total profit was Rs. 400, the value of the consignment was

- A) Rs. 15,000    B) Rs. 12,000    C) Rs. 10,000    D) Rs. 20,000
- 

**DIRECTION for the question:** Mark the best option.

**Question No. : 149**

Two shopkeepers announce the same price of Rs. 700 for a shirt. The first offers successive discounts of 30% and 6% while the second offers successive discounts of 20% and 16%. The shopkeeper that offers better discount, charges \_\_\_\_\_ less than the other shopkeeper.

- A) Rs. 22.40    B) Rs. 16.80    C) Rs. 9.80    D) Rs. 36.40

**DIRECTION for the question:** Mark the best option.



**Question No. : 150**

Even after reducing the marked price of a transistor by Rs. 32, a shopkeeper makes a profit of 15%. If the cost price be Rs. 320, what percentage of profit would he have made if he had sold the transistor at the marked price?

- A) 25%   B) 20%   C) 10%   D) 15%
- 

**DIRECTION for the question:** Mark the best option.

**Question No. : 151**

A train started from station 'A' and proceeded towards station 'B' at a speed of 48 km/hr. Forty-five minutes later another train started from station 'B' and proceeded towards station 'A' at 50 km/hr. If the distance between the two stations is 232 km, at what distance from station 'A' will the trains meet?

- A) 108 km   B) 144 km   C) 132 km   D) None of these
- 

**DIRECTION for the question:** Mark the best option.

**Question No. : 152**

A cylindrical tub of radius 12 cm contains water up to a depth of 20 cm. A spherical iron ball is dropped into the tub and thus the level of water is raised by 6.75 cm. The radius of the ball is

- A) 7.25 cm   B) 6 cm   C) 4.5 cm   D) 9 cm
- 

**DIRECTION for the question:** Mark the best option.

**Question No. : 153**

A spherical ball of lead, 3 cm in diameter is melted and recast into three spherical balls. The diameter of two of these are 1.5 cm and 2 cm respectively. The diameter of the third ball is

- A) 3 cm   B) 2.66 cm   C) 2.5 cm   D) 3.5 cm
- 

**DIRECTION for the question:** Mark the best option.

**Question No. : 154**

A runs  $1\frac{2}{3}$  times as fast as B. If A gives B a start of 80 m, how far must the winning post be so that A and B might reach it at the same time?

- A) 270 m   B) 300 m   C) 200 m   D) 160 m
- 

**DIRECTION for the question:** Mark the best option.

**Question No. : 155**

There are two bags, one of which contains 3 black and 4 white balls, while the other contains 4 black and 3 white balls. A dice is cast; if the face 1 or 3 turns up, a ball is taken from the first bag and if any other face turns up a ball is chosen from the second bag. The probability of choosing a black ball is

- A) 12/21   B) 11/21   C) 10/21   D) 9/21
- 

**DIRECTION for the question:** Mark the best option.

**Question No. : 156**

A can hit a target 4 times in 5 shots, B hits 3 times in 4 shots, and C hits twice in 3 shots. They fire together. The probability that at least two shots hit the target is

A)  $\frac{5}{6}$    B)  $(\frac{1}{3})^2$    C)  $\frac{13}{30}$    D) None of these

---

**DIRECTION for the question:** Mark the best option.

**Question No. : 157**

A cistern, open at the top, is to be lined with sheet lead which weighs  $27 \text{ kg/m}^2$ . The cistern is 4.5 m long and 3 m wide and holds  $50 \text{ m}^3$ . The weight of lead required is

A) 1660.62 kg   B) 1764.60 kg   C) 1864.50 kg   D) 1860.62 kg

---

**DIRECTION for the question:** Mark the best option.

**Question No. : 158**

A hemispherical bowl is 176 cm round the brim. Supposing it to be half full, how many persons may be served from it in hemispherical glasses 4 cm in diameter at the top?

A) 1372   B) 1272   C) 1172   D) 1472

---

**DIRECTION for the question:** Mark the best option.

**Question No. : 159**

A balloon leaves the earth at point A and rises at a uniform velocity. At the end of  $1\frac{1}{2}$  min an observer situated at a distance of 200 m from A finds the angular elevation of the balloon to be  $60^\circ$ . The speed of the balloon is

A) 5.87 m/s   B) 4.87 m/s   C) 3.87 m/s   D) 6.87 m/s

---

**DIRECTION for the question:** Mark the best option.

**Question No. : 160**

At the foot of a mountain the elevation of its summit is  $45^\circ$ . After ascending one kilometer towards the mountain upon an incline of  $30^\circ$ , the elevation changes to  $60^\circ$ . The height of the mountain is

A) 1.366 km   B) 1.266 km   C) 1.166 km   D) 1.466 km

---

**DIRECTION for the question:** Mark the best option.

**Question No. : 161**

A sum of Rs. 25 was paid for a work which A can do in 32 days, B in 20 days, B and C in 12 days and D in 24 days. How much did C receive if all the four work together?

A) Rs.  $\frac{15}{3}$    B) Rs.  $\frac{14}{3}$    C) Rs.  $\frac{13}{3}$    D) Rs.  $\frac{16}{3}$

---

**DIRECTION for the question:** Solve the following question and mark the best possible option.

**Question No. : 162**

A job can be done by 3 skilled workmen in 20 days or by 5 boys in 30 days. How many days will they take if all of them work together?

A) 11 days   B) 10 days   C) 8 days   D) 12 days

---

**DIRECTION for the question:** Mark the best option.

**Question No. : 163**

A cistern can be filled by two pipes filling separately in 12 and 16 min respectively. Both pipes are opened together for a certain time but being clogged, only  $\frac{7}{8}$  of full quantity water flows through the former and only  $\frac{5}{6}$  through the latter pipe. The obstructions, however, being suddenly removed, the cistern is filled in 3 min from that moment. How long was it before the full flow began?

- A) 4.5 min    B) 2.5 min    C) 3.5 min    D) 5.5 min

### Section : Reasoning

---

**DIRECTIONS for the question:** In the following question, a statement is given, followed by two conclusions I and II. Consider the statement and the following conclusions. Decide which of the conclusions follows from the statement.

**Question No. : 164**

*Statement:*

Black cloud follows thunder; rains follow thunder.

*Conclusions:*

- I. Thunder is the cause of rain  
II. Black cloud is the cause of thunder.

Choose the correct option:

- A) If neither conclusion I nor II follows    B) If only conclusion II follows    C) If only conclusion I follows  
D) If both conclusions I and II follow    E) Either I follows or II follows.
- 

**DIRECTIONS for the question:** In the following question, a statement is given, followed by two conclusions I and II. Consider the statement and the following conclusions. Decide which of the conclusions follows from the statement.

**Question No. : 165**

*Statement:*

Workers feel highly motivated when they get a sense of involvement by participating in the management of companies.

*Conclusions:*

- I. Workers should be motivated to produce more.  
II. Workers should be allowed to participate in the management of companies.

Choose the correct option:

- A) If neither conclusion I nor II follows    B) If only conclusion II follows    C) If only conclusion I follows  
D) If both conclusions I and II follow    E) Either conclusion I follows or conclusion II follows
- 

**DIRECTIONS for the question:** In the following question, a statement is given, followed by two conclusions I and II. Consider the statement and the following conclusions. Decide which of the conclusions follows from the statement.

**Question No. : 166**

*Statement:*

Power consumption in every family has doubled during the last five years.

*Conclusions:*

- I. There is a lot of development in the society.  
II. Power rates have become cheaper.

Choose the correct option:

- A) If neither conclusion I nor II follows    B) If only conclusion II follows    C) If only conclusion I follows  
D) If both conclusions I and II follow    E) Either conclusion I or conclusion II follows.
- 

**DIRECTIONS for the question:** In the following question, a statement is given, followed by two conclusions I and II. Consider the statement and the following conclusions. Decide which of the conclusions follows from the statement.

**Question No. : 167**

*Statement:*

This world is neither good nor evil; each man manufactures a world for himself.

Conclusions:

- I. Some people find this world quite good.
- II. Some people find this world quite bad.

Choose the correct option:

- A) If neither conclusion I nor II follows
- B) If only conclusion II follows
- C) If only conclusion I follows
- D) If both conclusions I and II follow
- E) Either conclusion I or II follows.

**DIRECTION for the question:** The following question has a statement followed by two assumptions I and II. Consider the statement and the following assumptions. Decide which of the assumptions is implicit in the statement.

**Question No. : 168**

Statement :

Incentives must be given to strengthen the motivation of employees.

Assumptions :

- I. Incentives are expected to motivate employees.
- II. Employees at present are not motivated.

Choose the correct option:

- A) If neither assumption I nor II is implicit
  - B) If only assumption II is implicit
  - C) If only assumption I is implicit
  - D) If both assumptions I and II are implicit
  - E) Either I or II is implicit.
- 

**DIRECTION for the question:** The following question has a statement followed by two assumptions I and II. Consider the statement and the following assumptions. Decide which of the assumptions is implicit in the statement.

**Question No. : 169**

Statement :

Despite heavy rains traffic has not been disturbed.

Assumptions :

- I. Rains do not affect traffic movement.
- II. Adequate precautions were taken for traffic management during rainy season.

Choose the correct option:

- A) If neither assumption I nor II is implicit
- B) If only assumption II is implicit
- C) If only assumption I is implicit
- D) If both assumptions I and II are implicit

**DIRECTION for the question:** The following question has a statement followed by two assumptions I and II. Consider the statement and the following assumptions. Decide which of the assumptions is implicit in the statement.

**Question No. : 170**

Statement :

The government, through a notification, has banned smoking in public places.

Assumptions :

- I. People should abide by the notification.
- II. The message in the notification will reach the general public.

Choose the correct option:

- A) If neither assumption I nor II is implicit
  - B) If only assumption II is implicit
  - C) If only assumption I is implicit
  - D) If both assumptions I and II are implicit
- 

**DIRECTION for the question:** The following question has a statement followed by two assumptions I and II. Consider the statement and the following assumptions. Decide which of the assumptions is implicit in the statement.

**Question No. : 171**

*Statement :*

"Wanted a two bedroom-hall-kitchen flat in the college area" – an advertisement.

*Assumptions :*

- I. Landlords generally respond to such advertisements.
- II. Flats may be available in the college area.

Choose the correct option:

- A) If neither assumption I nor II is implicit    B) If only assumption II is implicit    C) If only assumption I is implicit
- D) If both assumptions I and II are implicit

**DIRECTIONS for the question:** There is a question followed by two arguments I and II. Decide which of the arguments is a 'strong' argument and which is a 'weak' argument.

**Question No. : 172**

Should religion be taught in our schools?

*Arguments:*

- I. Yes, do the parents not wish to develop their wards into mature individuals?
- II. No, how can one dream of such a step when we want the young generation to fulfil its role.

Choose the correct option:

- A) If neither argument I nor II is strong    B) If only argument II is strong    C) If only argument I is strong
  - D) If both arguments I and II are strong
- 

**DIRECTIONS for the question:** There is a question followed by two arguments I and II. Decide which of the arguments is a 'strong' argument and which is a 'weak' argument.

**Question No. : 173**

Should family planning be made compulsory in India?

*Arguments:*

- I. Yes, looking at the miserable conditions in India, there is no other go.
- II. No, in India there are people of various religions and family planning is against the tenets of some of the religions.

Choose the correct option:

- A) If neither argument I nor II is strong    B) If only argument II is strong    C) If only argument I is strong
- D) If both arguments I and II are strong

**DIRECTIONS for the question:** There is a question followed by two arguments I and II. Decide which of the arguments is a 'strong' argument and which is a 'weak' argument.

**Question No. : 174**

Should judiciary be independent of the executive?

*Arguments:*

- I. Yes. This would help curb the unlawful activities of the executive.
- II. No. The executive would not be able to take bold measures.

Choose the correct option:

- A) If neither argument I nor II is strong    B) If only argument II is strong    C) If only argument I is strong
  - D) If both arguments I and II are strong
- 

**DIRECTIONS for the question:** There is a question followed by two arguments I and II. Decide which of the arguments is a 'strong' argument and which is a 'weak' argument.

**Question No. : 175**

Should open book systems be introduced in examinations?

*Arguments:*

I. Yes, because it will avoid mass copying.

II. No, because then all students will get 100% marks.

Choose the correct option:

- A) If neither argument I nor II is strong    B) If only argument II is strong    C) If only argument I is strong  
D) If both arguments I and II are strong

***DIRECTIONS for the question: Mark the best option.***

**Question No. : 176**

Ajay is the brother of Vijay. Mili is the sister of Ajay. Sanjay is the brother of Rahul and Mehul is the daughter of Vijay. Who is Sanjay's uncle?

- A) Data inadequate    B) Mehul    C) Rahul    D) Vijay
- 

***DIRECTIONS for the question: Mark the best option.***

**Question No. : 177**

If Amit's father is Billoo's father's only son and Billoo has neither a brother nor a daughter, what is the relationship between Amit and Billoo?

- A) Father – Son    B) Father – Daughter    C) Uncle – Nephew    D) Cousins

***DIRECTIONS for the question: Mark the best option.***

**Question No. : 178**

Meera is daughter of Mahender. Mala, Achla's sister has a son Mohan and daughter Sushila. Kamla is maternal aunt of Sushila and mother of Krishna. Mohan is cousin of Krishna. Krishna is sister of Meera. How is Achla related to Mahender?

- A) Niece    B) Sister-in-law    C) Cousin    D) Daughter
- 

***DIRECTIONS for the question: Mark the best option.***

**Question No. : 179**

There are five different houses, A to E, in a row. A is to the immediate right of B and E is to the immediate left of C and right of A, and B is to the right of D. Which of the house is in the middle?

- A) D    B) A    C) B    D) E

***DIRECTIONS for the question: Mark the best option.***

**Question No. : 180**

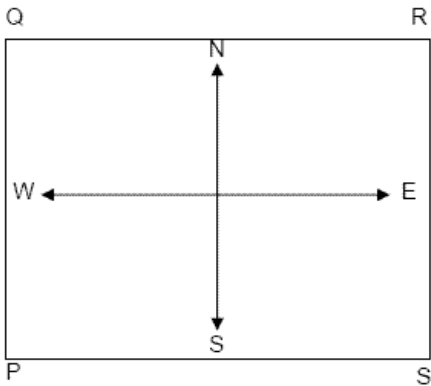
If the alphabet series is written in the manner AZBYCX .... and so on, what will be the fifth letter to the right of fifteenth letter from the left?

- A) S    B) J    C) P    D) Q
- 

**Question No. : 181**

**DIRECTION for the question:** The following question based on the information given.

P, Q, R and S are standing on four corners of a square piece of plot as shown in the given figure. They start moving, and the movements are explained in each of the questions.



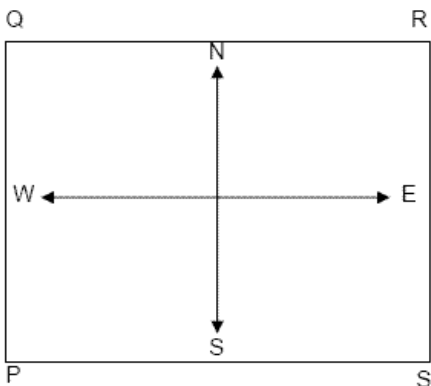
P, Q, R and S walk diagonally to opposite corners and from there Q and R walk one and a half sides anti-clockwise while P and S walk one side clockwise along the sides. Where is S now?

- A) At the South-West corner    B) At the North-East corner    C) At the North-West corner    D) None of these

**Question No. : 182**

**DIRECTION for the question:** The following question based on the information given.

P, Q, R and S are standing on four corners of a square piece of plot as shown in the given figure. They start moving, and the movements are explained in each of the questions.



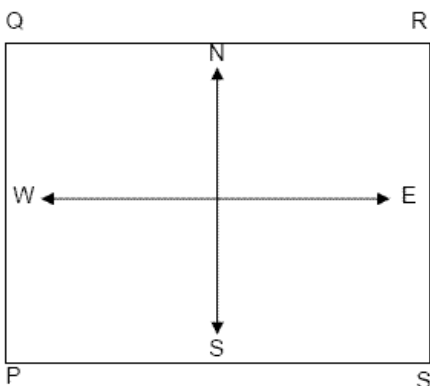
Q travelled straight to R, a distance of 10 km. He turned right and walked 7 km towards S. Again he turned right and walked 8 km, and then finally turned right and walked 7 km. How far is he from his original position?

- A) 2 km    B) 8 km    C) 7 km    D) 3 km

**Question No. : 183**

**DIRECTION for the question:** The following question based on the information given.

P, Q, R and S are standing on four corners of a square piece of plot as shown in the given figure. They start moving, and the movements are explained in each of the questions.



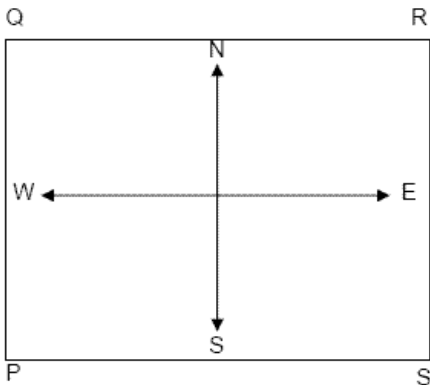
P and S walk one and a half lengths of the side clockwise and anti-clockwise respectively. Which one of the following statements is true?

- A) P and S are both at the midpoint between Q & R
- B) P and S are at the midpoints between R & S and Q & R respectively
- C) P is at midpoint between Q & R and S is at the corner originally occupied by P
- D) S is at the midpoint between Q & R and P is at the midpoint between the original side of R & S

**Question No. : 184**

**DIRECTION for the question:** The following question based on the information given.

P, Q, R and S are standing on four corners of a square piece of plot as shown in the given figure. They start moving, and the movements are explained in each of the questions.



P, Q, R and S walk one and a half sides clockwise. Who is on the left of Q, if he is facing West?

- A) S
- B) R
- C) P
- D) None of these

**DIRECTION for the question:** Read the following information to answer the question.

**Question No. : 185**

Five friends A, B, C, D and E wore shirts of green, yellow, pink, red and blue colours and shorts of black, white, grey, blue and green colours.

Nobody wore shirt and short of same colour.

D wore blue shirt and C wore green short.

The one who wore green shirt, wore black short and the one who wore blue short, wore red shirt.

A wore white short and pink shirt.

E did not wear red shirt.

What was the colour combination of D's shirt and short?

- A) Blue and grey
- B) Red and blue
- C) Green and black
- D) Blue and white



**DIRECTION for the question:** Read the following information to answer the question.

**Question No. : 186**

Five friends A, B, C, D and E wore shirts of green, yellow, pink, red and blue colours and shorts of black, white, grey, blue and green colours.

Nobody wore shirt and short of same colour.

D wore blue shirt and C wore green short.

The one who wore green shirt, wore black short and the one who wore blue short, wore red shirt.

A wore white short and pink shirt.

E did not wear red shirt.

Who wore white short?

A) B    B) A    C) E    D) Data inadequate

---

**DIRECTION for the question:** Read the following information to answer the question.

**Question No. : 187**

Five friends A, B, C, D and E wore shirts of green, yellow, pink, red and blue colours and shorts of black, white, grey, blue and green colours.

Nobody wore shirt and short of same colour.

D wore blue shirt and C wore green short.

The one who wore green shirt, wore black short and the one who wore blue short, wore red shirt.

A wore white short and pink shirt.

E did not wear red shirt.

Which colour shirt did C wear?

A) Green    B) Blue    C) Yellow    D) Pink

---

**DIRECTION for the question:** Read the following information to answer the question.

**Question No. : 188**

Five friends A, B, C, D and E wore shirts of green, yellow, pink, red and blue colours and shorts of black, white, grey, blue and green colours.

Nobody wore shirt and short of same colour.

D wore blue shirt and C wore green short.

The one who wore green shirt, wore black short and the one who wore blue short, wore red shirt.

A wore white short and pink shirt.

E did not wear red shirt.

Which colour short did B wear?

A) White    B) Blue    C) Grey    D) Black

---

**DIRECTION for the question:** Mark the best option.

**Question No. : 189**

Five senior citizens are living in a multi-storied building. Mr. Bhagat lives in a flat above Mr. Ashokan, Mr. Lokesh lives in a flat below Mr. Gaurav, Mr. Ashokan lives in a flat above Mr. Gaurav and Mr. Rakesh lives in a flat below Mr. Lokesh. Who lives in the topmost flat?

A) Mr. Bhagat    B) Mr. Gaurav    C) Mr. Lokesh    D) Mr. Rakesh

---

**DIRECTION for the question:** Mark the best option.

**Question No. : 190**

Kittu is in between Mohan and Sohan & there is no other person sitting between them. Raju is to the left of Sohan and Shyam is to the right of Mohan. If all of the friends are sitting facing South, then who is on their extreme right?

- A) Kittu    B) Sohan    C) Mohan    D) Shyam
- 

**DIRECTION for the question:** Mark the best option.

**Question No. : 191**

A train runs 120 km in West direction, 30 km in South Direction and then 80 km in east direction before reaching the station. In which direction is the station from the train's starting point?

- A) South-East    B) North-West    C) South-West    D) South
- 

**DIRECTION for the question:** Mark the best option.

**Question No. : 192**

Manu goes 40 km North, turns right and goes 80 km, turns right again and goes 30 km. In the end he turns right again and goes 80 km. How far is he from his starting point if he goes straight ahead another 50 km and turns left to go his last 10 km?

- A) 40 km    B) 30 km    C) 10 km    D) 50 km
- 

**DIRECTION for the question:** Read the following information to answer the question.

**Question No. : 193**

There are four friends Ravi, Hari, Manu and Jatin. One of them lives at Kanpur and his hobbies are reading and writing. Hari and Jatin live at Lucknow. Hari's hobby is stamp collection. Common hobby of two friends staying at Lucknow is coin collection. Ravi lives at Allahabad. One boy staying at Lucknow also loves to hear music. The boy staying at Allahabad loves to travel and read comics. All the boys have two hobbies each.

Coin collection and listening to music are the hobbies of

- A) Hari    B) Ravi    C) Manu    D) Jatin
- 

**DIRECTION for the question:** Read the following information to answer the question.

**Question No. : 194**

There are four friends Ravi, Hari, Manu and Jatin. One of them lives at Kanpur and his hobbies are reading and writing. Hari and Jatin live at Lucknow. Hari's hobby is stamp collection. Common hobby of two friends staying at Lucknow is coin collection. Ravi lives at Allahabad. One boy staying at Lucknow also loves to hear music. The boy staying at Allahabad loves to travel and read comics. All the boys have two hobbies each. (Note : reading and reading comics are two different hobbies)

Which of the following is **not** the hobby of Ravi?

- A) Travelling    B) Reading    C) Reading comics    D) None of these
- 

**DIRECTION for the question:** Mark the best option.

**Question No. : 195**

If the third day of a month is Monday, which of the following will be the fifth day from 21<sup>st</sup> of that month?

- A) Wednesday    B) Monday    C) Tuesday    D) Thursday
- 

**DIRECTION for the question:** Mark the best option.

**Question No. : 196**

My uncle shall visit me after 64 days of my father's birthday. If my father's birthday falls on Tuesday, what shall be the day on my uncle's

visit?

A) Tuesday B) Sunday C) Wednesday D) Monday

---

**DIRECTION for the question:** Mark the best option.

**Question No. : 197**

In a queue, Sadiq is 14<sup>th</sup> from the front and Joseph is 17<sup>th</sup> from the end, while Jane is in between Sadiq and Joseph. If Sadiq be ahead of Joseph and there be 48 persons in the queue, how many persons are there between Sadiq and Jane?

A) 7 B) 6 C) 5 D) 8

**DIRECTION for the question:** Mark the best option.

**Question No. : 198**

Jagan was to either get one-seventh of a milk chocolate or one-fourteenth of a bigger fruit chocolate. Which chocolate would give him the larger piece if the fruit chocolate is three times as large as the milk chocolate?

A) The piece will be of the same size B) Fruit chocolate C) Milk chocolate D) None of these

---

**DIRECTION for the question:** Mark the best option.

**Question No. : 199**

If such numbers which are divisible by 5, and also those which have 5 as one of the digits are eliminated from the numbers 1 to 60 (both inclusive), how many numbers would remain?

A) 40 B) 47 C) 53 D) 45

**DIRECTION for the question:** Mark the best option.

**Question No. : 200**

What is the number of the different letters which occur in the word PANCHATANTRA?

A) 7 B) 6 C) 9 D) 12

---

**QNo:- 1 ,Correct Answer:- D**

**Explanation:-**

Even after combining both the statements, we cannot get the working speed of the three workers. Hence slowest of the three cannot be evaluated

**QNo:- 2 ,Correct Answer:- A**

**Explanation:-**

1. Using the 1st statement, we can find the marks of X. But no info about the marks of Y and Z separately. Also using the 2nd statement, we can find the marks of Y. But no info about the marks of X and Z separately. But combining the two statements, we can find the marks of all the three persons.

---

**QNo:- 3 ,Correct Answer:- C**

**Explanation:-**

From the 1st statement, we can find the number of male voters as  $993 - 368 = 625$ . So ratio of number of female voters to the number of male voters can be calculated. Nothing can be inferred from the 2nd statement. So 1st statement alone is enough.

**QNo:- 4 ,Correct Answer:- A**

**Explanation:-**

1. Both statements alone are not enough. But combining the two statements, we can get the length of the train and hence the speed of the train.

---

**QNo:- 5 ,Correct Answer:- D**

**Explanation:-**

Both statements alone are not enough. After combining them, we are still not sure about the angle between the two hands as nothing definite is given. So answer is 4<sup>th</sup> option.

---

**QNo:- 6 ,Correct Answer:- C**

**Explanation:-**

For the year 2005, value is 90/70. For the year 2004, value is 80/70 and for the year 2003, the value is 70/50. Hence it is maximum for the year 2003.

---

**QNo:- 7 ,Correct Answer:- B**

**Explanation:-**

Average production of P during the years 2005 to 2007 is  $(50 + 100 + 80)/3 = 230/3$ .  
Average production of Q during the same period is  $(70 + 80 + 100)/3 = 250/3$ .  
Hence the required ratio is 23: 25.

---

**QNo:- 8 ,Correct Answer:- D**

**Explanation:-**

Value of production of Q in the year 2003 = 50, value of production of Q in the year 2007 = 100.  $\therefore$  % age increase =  $\frac{100-50}{50} \times 100 = 100\%$

---

**QNo:- 9 ,Correct Answer:- D**

**Explanation:-**

Average production of P over the years 2003 – 2007 is  $(60 + 90 + 50 + 100 + 80)/5 = 380/5 = 76$ .  
Average production of Q over the years 2003 – 2007 is  $(50 + 70 + 70 + 80 + 100)/5 = 370/5 = 74$ .  
Average production of R over the years 2003 – 2007 is  $(70 + 80 + 90 + 70 + 70)/5 = 380/5 = 76$ .  
Hence it is same for P and R.

---

**QNo:- 10 ,Correct Answer:- C**

**Explanation:-**

Increase in the year 2006 =  $\frac{80-70}{70} \times 100 = 14\%$

In 2005, there is no increase or decrease.  
Value remains same.

Increase in the year 2004 =  $\frac{70-50}{50} \times 100 = 40\%$

Increase in the year 2007 =  $\frac{100-80}{80} \times 100 = 25\%$

Hence it is maximum for the year 2004.

---

**QNo:- 11 ,Correct Answer:- A**

**Explanation:-**

Profit made by company A :  $155 = \frac{77.5}{100}(T) \Rightarrow \text{Total} = 200 \text{ lakh}$

Profit made by company B :  $402 = \frac{80.4}{100}(T) \Rightarrow \text{Total} = 500 \text{ lakh}$

$\Rightarrow$  Total of the two = 700 lakh

**QNo:- 12 ,Correct Answer:- D**

**Explanation:-**

Borrowings of A :  $234 = \frac{18}{100}(T) \Rightarrow T=1300$ , Borrowings of B : 576

$= \frac{24}{100}(T) \Rightarrow T=2400$

Borrowings of C :  $129.6 = \frac{16}{100}(T) \Rightarrow T=810$ , Borrowings of D : 144

$= \frac{9}{100}(T) \Rightarrow T=1600$

Borrowings of E :  $180 = \frac{15}{100}(T) \Rightarrow T=1200$

$\therefore \text{Total} = (1300 + 2400 + 810 + 1600 + 1200) \text{ 000} = 7310 \times 1000 = 7310000$   
 $\Rightarrow 73.1 \text{ lakhs.}$

**QNo:- 13 ,Correct Answer:- D**

**Explanation:-**

Borrowings of company A :  $\frac{18}{100}(x) = 234 \Rightarrow x = 1300000$

Borrowings of company B :  $\frac{24}{100}(y) = 576$

$\Rightarrow y = 2400000 \Rightarrow y$  exceeds  $x$  by Rs. 1,100,000.

**QNo:- 14 ,Correct Answer:- B**

**Explanation:-**

Dividend paid by company D:  $270 = \frac{67.5}{100}(T) \Rightarrow T = 400 \text{ lakh}$

$\Rightarrow \text{dividend paid} = 400 \times \frac{32.5}{100} = 130 \text{ lakh}$

Dividend paid by company A:  $155 = \frac{77.5}{100}(T) = 200 \text{ lakh}$

$\Rightarrow \text{dividend paid} = 200 \times \frac{22.5}{100} = 45 \text{ lakh}$

$\therefore$  their difference =  $130 - 45 = 85 \text{ lakh}$

**QNo:- 15 ,Correct Answer:- C**

**Explanation:-**

Required number =  $25400 \times \frac{(15+19)}{100} \Rightarrow 25400 \times \frac{34}{100} = 8636$ .

**QNo:- 16 ,Correct Answer:- A**

**Explanation:-**

Required number =  $18600 \times \frac{(15+20)}{100} \Rightarrow 18600 \times \frac{35}{100} = 6510$

**QNo:- 17 ,Correct Answer:- B**

**Explanation:-**

Required number =  $18600 \times \frac{12}{100} + 25400 \times \frac{13}{100} = 2232 + 3302 = 5534$ .

**QNo:- 18 ,Correct Answer:- D**

**Explanation:-**

$$\text{Required ratio} = 18600 \times \frac{13}{100} : 25400 \times \frac{11}{100} = 2418 : 2794$$

The answer 13:15 is closer to the actual value of the final ratio.

---

**QNo:- 19 ,Correct Answer:- C**

**Explanation:-**

$$\text{Required ratio} = 18600 \times \frac{20}{100} : 25400 \times \frac{18}{100} = 3720 : 4572 \Rightarrow \text{ratio is close to } 0.8 \text{ i.e. } 4 : 5.$$

**QNo:- 20 ,Correct Answer:- B**

**Explanation:-**

Increase in yield per tonne km in April =  $8.73 - 7.46 = 1.27$ .

Increase in yield per tonne km in July =  $10 - 8.31 = 1.69 \Rightarrow \text{ratio} = \frac{1.27}{1.69} \approx 5 : 7$

---

**QNo:- 21 ,Correct Answer:- B**

**Explanation:-**

$$\text{Average profit from 2001 - 02 to 2004 - 05 was : } \frac{66 + 30 + 43 + 4}{4} = 35.75 \text{cr} \Rightarrow 3575 \text{ lakhs.}$$

**QNo:- 22 ,Correct Answer:- B**

**Explanation:-**

Air India yield per tonne km in April 2004 = Rs. 7.46. Air India yield per tonne km in May 2004 = Rs. 7.48.  $\therefore$  percentage increase =  $\frac{7.48 - 7.46}{7.46} \times 100 = 0.26\%$

---

**QNo:- 23 ,Correct Answer:- D**

**Explanation:-**

Passenger load factor has increased from 56 to 66.4 in 4 yrs.  $\therefore$  % age increase

$$= \frac{66.4 - 56}{56} \times \frac{100}{4} = 4.6\% \text{ approx.}$$

**QNo:- 24 ,Correct Answer:- C**

**Explanation:-**

Total distance covered by the train = 860 km,

Total stoppage time =  $10 + 2 + 5 + 10 + 15 + 10 = 52 \text{ min.}$

$\therefore$  Total travelling time =  $11 \text{ hrs } 25 \text{ min} - 52 \text{ min} = 10 \text{ hrs } 33 \text{ min.}$

$$\therefore \text{overall average speed} = \frac{860}{10 \frac{33}{60}} \Rightarrow \frac{860 \times 60}{633} = 81 \text{ kmph}$$


---

**QNo:- 25 ,Correct Answer:- C**

**Explanation:-**

$$\text{Stoppage time} = 52 \text{ min. } \therefore \% \text{ age stoppage} = \frac{52}{660 + 25} \times 100 = 7.6\%$$

So % age of time that was actually spend on travelling =  $100 - 7.6 = 92.4\%$

**QNo:- 26 ,Correct Answer:- D**

**Explanation:-**

Total distance = 860km. Half distance = 430km.

Total stoppage time in the 1st half of the total distance =  $10 + 2 + 5 = 17$  min.  
 Total stoppage time in the 2nd half of the total distance =  $10 + 15 + 10 = 35$  min.  
 Required ratio =  $17 : 35 = 1 : 2$

---

**QNo:- 27 ,Correct Answer:- A**

**Explanation:-**

$$\text{Overall average speed of entire trip} = \frac{860}{11\frac{25}{60}} = \frac{860 \times 60}{685} = 75 \text{ kmph}$$

$$\text{Average speed from A to B} = \frac{140}{1\frac{40}{60}} = \frac{140 \times 60}{100} = 84 \text{ kmph}$$

$$\text{Average speed from B to C} = \frac{91}{1\frac{30}{60}} = \frac{91 \times 60}{90} = 60 \text{ kmph}$$

$$\text{Average speed from C to D} = \frac{149}{1\frac{45}{60}} = \frac{149 \times 60}{105} = 85.14 \text{ kmph}$$

$$\text{Average speed from D to E} = \frac{88}{1\frac{25}{60}} = \frac{88 \times 60}{85} = 62.1 \text{ kmph}$$

$$\text{Average speed from E to F} = \frac{106}{1\frac{25}{60}} = \frac{106 \times 60}{85} = 74.8 \text{ kmph}$$

$$\text{Average speed from F to G} = \frac{176}{2\frac{15}{60}} = \frac{176 \times 60}{135} = 78.2 \text{ kmph}$$

$$\text{Average speed from G to H} = \frac{110}{1\frac{25}{60}} = \frac{110 \times 60}{85} = 77.6 \text{ kmph}$$

So there are 3 pairs where the average speed is below the overall average speed of the entire trip.

**QNo:- 28 ,Correct Answer:- D**

**Explanation:-**

New stoppage time =  $52 \times 1.56 = 81$  min. Hence increase in time =  $81 - 52 = 29$  min.  
 So train would reach H at  $18.25 + 29$  min. = 18.54

---

**QNo:- 29 ,Correct Answer:- B**

**Explanation:-**

People from city S presently = 3500, people from city T presently = 4500  
 Required ratio =  $11 : 9$  = People in S should be 5500. So 2000 more people required.

**QNo:- 30 ,Correct Answer:- C**

**Explanation:-**

Number of people contributing from Q = 5500, number of people contributing from U = 2500. Total number of people =  $4000 + 5500 + 5000 + 3500 + 4500 + 2500 = 25000$ .

$$\therefore \text{required \%} = \frac{5500 + 2500}{25000} \times 100 = \frac{8000}{25000} \times 100 = 32\%$$


---

**QNo:- 31 ,Correct Answer:- A**

**Explanation:-**

Total number of people contributing from all cities = 25000.

$$\text{Also } \frac{18}{100} \times 25000 = 4500.$$

So cities P, S and U contribute less than 4500. Hence 3 cities.

**QNo:- 32 ,Correct Answer:- D**

**Explanation:-**

Number of people contributing from city T = 4500. Number of people contributing from city S = 3500

$$\therefore \text{required \% age} = \frac{4500-3500}{3500} \times 100 = \frac{1000}{3500} \times 100 = 29\%$$

---

**QNo:- 33 ,Correct Answer:- A**

**Explanation:-**

Number of people contributing from city P = 4000, number of people contributing from city R = 5000. Required ratio = 4000 : 5000 = 4 : 5

**QNo:- 34 ,Correct Answer:- C**

**Explanation:-**

Column A: Average speed =  $350/5 = 70$  kmph.

Column B: Average speed =  $780/12 = 65$  kmph.

So column A is greater.

---

**QNo:- 35 ,Correct Answer:- B**

**Explanation:-**

Column A:  $4\sqrt{2} = 4 \times 1.414 = 5.656$ .

Column B:  $\sqrt{35} = 5.92$ .

So column B is greater.

---

**QNo:- 36 ,Correct Answer:- A**

**Explanation:-**

Column A :  $3x - (4+x) = 3x - 4 - x = 2x - 4$ ,  
which is same as column B.

---

**QNo:- 37 ,Correct Answer:- A**

**Explanation:-**

Column A:  $\frac{2(14+b)}{2} = 14+b$ . Column B is also the same.

**QNo:- 38 ,Correct Answer:- C**

**Explanation:-**

Column A:  $(3x)^2 = 9x^2$ .

Column B:  $2x \times x = 2x^2$ .

Hence column A is greater.

---

**QNo:- 39 ,Correct Answer:- C**

**Explanation:-**

Column A: TSA of cube =  $6l^2 \Rightarrow 6 \times 4^2 = 96$ .

Column B: Regular pyramid has 4 equilateral triangles and one square at its base.

$$\therefore \text{Area} = 5 \times 5 + \frac{\sqrt{3}}{4} \times 5^2 \times 4 \Rightarrow 25 + 25\sqrt{3} = 25 \times 2.73 = 75.$$

So column A is greater.

**QNo:- 40 ,Correct Answer:- D**

**Explanation:-**



No relationship can be determined from the information given as volume of cylinder =  $\pi r^2 h$ .  
It is dependent both on height and radius.  
So nothing concrete can be inferred.

---

**QNo:- 41 ,Correct Answer:- B**

**Explanation:-**

**QNo:- 42 ,Correct Answer:- B**

**Explanation:-**

**QNo:- 43 ,Correct Answer:- C**

**Explanation:-**

**QNo:- 44 ,Correct Answer:- D**

**Explanation:-**

**QNo:- 45 ,Correct Answer:- A**

**Explanation:-**

**QNo:- 46 ,Correct Answer:- D**

**Explanation:-**

**QNo:- 47 ,Correct Answer:- B**

**Explanation:-**

**QNo:- 48 ,Correct Answer:- B**

**Explanation:-**

**QNo:- 49 ,Correct Answer:- C**

**Explanation:-**

**QNo:- 50 ,Correct Answer:- A**

**Explanation:-**

**QNo:- 51 ,Correct Answer:- B**

**Explanation:-**

**QNo:- 52 ,Correct Answer:- A**

**Explanation:-**

---

**QNo:- 53 ,Correct Answer:- B**

**Explanation:-**

**QNo:- 54 ,Correct Answer:- D**

**Explanation:-**

---

**QNo:- 55 ,Correct Answer:- C**

**Explanation:-**

**QNo:- 56 ,Correct Answer:- A**

**Explanation:-**

---

**QNo:- 57 ,Correct Answer:- B**

**Explanation:-**

**QNo:- 58 ,Correct Answer:- A**

**Explanation:-**

---

**QNo:- 59 ,Correct Answer:- C**

**Explanation:-**

**QNo:- 60 ,Correct Answer:- A**

**Explanation:-**

---

**QNo:- 61 ,Correct Answer:- C**

**Explanation:-**

**QNo:- 62 ,Correct Answer:- B**

**Explanation:-**

---

**QNo:- 63 ,Correct Answer:- D**

**Explanation:-**

**QNo:- 64 ,Correct Answer:- A**

**Explanation:-**

---

**QNo:- 65 ,Correct Answer:- B**

**Explanation:-**

**QNo:- 66 ,Correct Answer:- B**

**Explanation:-**

---

**QNo:- 67 ,Correct Answer:- D**

**Explanation:-**

**QNo:- 68 ,Correct Answer:- A**

**Explanation:-**

---

**QNo:- 69 ,Correct Answer:- B**

**Explanation:-**

**QNo:- 70 ,Correct Answer:- D**

**Explanation:-**

---

**QNo:- 71 ,Correct Answer:- C**

**Explanation:-**

**QNo:- 72 ,Correct Answer:- B**

**Explanation:-**

---

**QNo:- 73 ,Correct Answer:- C**

**Explanation:-**

**QNo:- 74 ,Correct Answer:- D**

**Explanation:-**

---

**QNo:- 75 ,Correct Answer:- B**

**Explanation:-**

**QNo:- 76 ,Correct Answer:- D**

**Explanation:-**

---

**QNo:- 77 ,Correct Answer:- A**

**Explanation:-**

**QNo:- 78 ,Correct Answer:- B**

**Explanation:-**

---

**QNo:- 79 ,Correct Answer:- B**

**Explanation:-**

**QNo:- 80 ,Correct Answer:- A**

**Explanation:-**

---

**QNo:- 81 ,Correct Answer:- A**

**Explanation:-**

1. Misologist is the one who hates, any arguments, reasons or enlightenment. Misogynist is a person who hates, dislikes, or mistrusts women. Bibliophilic is a person who loves or collect books as examples of fine or unusual printing, binding or the like.

**QNo:- 82 ,Correct Answer:- C**

**Explanation:-**

Infection is carried through atmosphere and contagious diseases are those capable of being transmitted by bodily contact with an infected person or object.

---

**QNo:- 83 ,Correct Answer:- A**

**Explanation:-**

Exodus means many people leaving the place at the same time due to war, etc.

**QNo:- 84 ,Correct Answer:- A**

**Explanation:-**

Maiden is the first speech made by someone and extempore is on the spot speaking.

---

**QNo:- 85 ,Correct Answer:- B**

**Explanation:-**

Indian art recalls (is reminiscent of) Japanese art because, like Japanese art, it minimizes; it understates. The clause following "Japanese art" gives examples of what Japanese art is like: it suggests; it does not state directly or overstate.

**QNo:- 86 ,Correct Answer:- A**

**Explanation:-**

In the absence of predators, goats would not be killed and hence would thrive. The result would be too many goats and hence overgrazing, which would threaten the native vegetation.

---

**QNo:- 87 ,Correct Answer:- D**

**Explanation:-**

When a patient desires to continue as a subject of experimental medication it can only be due to the fact that the medication is helping him. Hence the first blank will have salutary- means favourable to or promoting health, as the answer.

**QNo:- 88 ,Correct Answer:- B**

**Explanation:-**

Fuel falls in the category of coolant and oil as the key word in the first half is 'spilled' and it is generally used for 'liquid matter'...and evaporation takes place after heating and it is followed by deposition(key word 'enduring').

---

**QNo:- 89 ,Correct Answer:- B**

**Explanation:-**

Subject pronoun he is the correction here as after 'to be' subject pronouns are used.

**QNo:- 90 ,Correct Answer:- D**

**Explanation:-**

The government failing to keep its pledges is the right phrase and there shouldn't be an apostrophe "s" in its. The usage of affect is incorrect in this context as we require the noun effect, and not the verb affect.

---

**QNo:- 91 ,Correct Answer:- B**

**Explanation:-**

The right phrase is 'gone hand in hand with' and the first part of the sentence should be in present tense.

**QNo:- 92 ,Correct Answer:- A**

**Explanation:-**

The sentence is in the 2<sup>nd</sup> conditional tense. Here the if clause is in the past tense and the main clause has "would + base verb (be in this case)." In the second conditional the verb be is always written as were. e.g. If I were the president of India, I would completely change the education system of our country.

---

**QNo:- 93 ,Correct Answer:- C**

**Explanation:-**

The entire passage is talking of business opportunities and balancing the risk involved , hence the answer is option C.

**QNo:- 94 ,Correct Answer:- A**

**Explanation:-**

Refer to : 5<sup>th</sup> para, line 3 – The primary risk Indian corporates need to contend with is strategic risk – the ability to identify and seize an opportunity and allot resources to ensure delivery. , 6<sup>th</sup> para opening sentence – The second major risk facing Indian corporate is operational risk; Indian productivity remains way behind global standards.

---

**QNo:- 95 ,Correct Answer:- D**

**Explanation:-**

Leveraging means to reduce one's own liability for any loss. The 4<sup>th</sup> para " Indian firms need to invest in understanding factors critical to their success – the physical, political, economic, social, technology and trade frameworks that will drive the competencies they need to acquire to leverage an opportunity.

This requires a realistic estimate of the value chains that deliver results at least risk and their own strengths and weaknesses to manage and mitigate the risks while making the most of the opportunity. The iPhone is an excellent example of this approach. In a commoditising market Apple identified the needs that users, young, old and mid-aged, wanted and produced a user-friendly product" gives the clear -cut example of iPhone as case in point for 'leveraging'.

**QNo:- 96 ,Correct Answer:- B**

**Explanation:-**

Refer to the 4<sup>th</sup> para sentence "In contrast, all the leading..." shows that 'apple' saw the opportunity and took an early lead by launching

iPhones and now rest of the players in the field are trying to catch up with the 'apple' by launching their versions of iPhone.

---

**QNo:- 97 ,Correct Answer:- B**

**Explanation:-**

Refer to the last few lines "With increasing ...nice but risk" tell that 'diversification' is one of the ways to sense the opportunities but not the best way as it is laden with high risk. Hence option 2 is factually wrong. All other options are explicitly mentioned in the passage. option 5 is generic therefore rejected.

**QNo:- 98 ,Correct Answer:- C**

**Explanation:-**

Here we need to concentrate on the second blank where the word solicited has been used, here negative word cannot be used therefore 1, 2, 4 gets eliminated. 3 happens to be the best choice as 'solicited' means 'to approach'/'to ask for' the funds intelligently.

---

**QNo:- 99 ,Correct Answer:- D**

**Explanation:-**

Refer to the first three lines of the passage.

**QNo:- 100 ,Correct Answer:- B**

**Explanation:-**

The passage is concerned about development in Europe and hence talks about "Joe the plumber" meaning a less educated individual as he will not be able to understand the nuances of economy and its implications.

---

**QNo:- 101 ,Correct Answer:- B**

**Explanation:-**

option a is illogical and option c is wrong as the crowds marched to demand an action and not to celebrate.

**QNo:- 102 ,Correct Answer:- D**

**Explanation:-**

All of these are true as per the passage.

---

**QNo:- 103 ,Correct Answer:- D**

**Explanation:-**

The passage talks about the various laws in the context of elections. Hence judiciary's role in elections.

**QNo:- 104 ,Correct Answer:- B**

**Explanation:-**

Refer to the line "There is no fundamental right to contest an election to Parliament or a Legislative Assembly" mentioned in the third paragraph. We can verify the first option by reading the last few lines of the passage "Unfortunately, the Supreme Court .....appear to be sound." The first line of the second paragraph makes option 3 correct. After reading the first paragraph we can conclude that the fourth option is correct.

---

**QNo:- 105 ,Correct Answer:- D**

**Explanation:-**

Refer to the line in the last sentence of 4<sup>th</sup> para – "Section 8 .....two years , would stand disqualified.

**QNo:- 106 ,Correct Answer:- B**

**Explanation:-**

Only option b is correct. We can come to the correct answer after reading the lines "It will be a great day for India if, ..... an clean record." mentioned in the fifth paragraph. Option c cannot be inferred as suggested by the author. The sentence, "Political parties obtain ..... clean record." does not mean that the political parties have to verify police records.

---

**QNo:- 107 ,Correct Answer:- B**

**Explanation:-**

The passage clearly states that "Under criminal law, there are at least three stages" which cannot mean only three stages. The last line of the second paragraph explains criminal jurisprudence. After reading the last paragraph of the passage, we can conclude that the last option is incorrect.

**QNo:- 108 ,Correct Answer:- A**

**Explanation:-**

Refer to the first six lines. The other options are wrong.

---

**QNo:- 109 ,Correct Answer:- A**

**Explanation:-**

Refer to the first three lines. Water logging is not required.

**QNo:- 110 ,Correct Answer:- B**

**Explanation:-**

Author has given considerable suggestions in the field of agriculture.

---

**QNo:- 111 ,Correct Answer:- C**

**Explanation:-**

The lime though a prolific yielder is not the most prolific among all fruits but among citrus only. The passage gives information about the crops grown in the initial years but not during the lifetime of the acid lime. Extrapolating that one hectare realises 2.5 lakhs, 10 hectares would realise 25 lakhs.

**QNo:- 112 ,Correct Answer:- D**

**Explanation:-**

Manure would not be sprayed it would be sprinkled or applied as mentioned in the passage

---

**QNo:- 113 ,Correct Answer:- A**

**Explanation:-**

'A' is a good start as it talks about the impact of any political decision on future. After this 'B' will come as it is the example for what is given in 'A'. After this B will come as it talks about the decision taken by the U.S govt. in 1929. E should come after this as it talks about irony of the situation. D will come after 'E' as it highlights the compulsion and obligation of govt. towards the country. Finally C will conclude the situation.

**QNo:- 114 ,Correct Answer:- C**

**Explanation:-**

A, the opening sentence talks about the central topic and then D talks about the relatively less discussed topic. C is elaborating what is being talked about in D. B further elaborates the idea in C.

---

**QNo:- 115 ,Correct Answer:- B**

**Explanation:-**

The order does not change as it is going in the chronological sequence.

**QNo:- 116 ,Correct Answer:- A**

**Explanation:-**

The words "following examples" leaves no doubt that D has to be the first sentence as the rest is the example of Pandit Jawaharlal Nehru. EBC is a set.

---

**QNo:- 117 ,Correct Answer:- B**

**Explanation:-**

This choice suggests that exterior forces, such as advertising, influence consumer choices, and it undercuts the contention that consumers know what they want. Each of the other choices is either irrelevant or strengthens rather than weakens the argument

**QNo:- 118 ,Correct Answer:- B**

**Explanation:-**

The conclusion that highway deaths will be reduced with the advent of automatic restraints is necessarily based upon the assumption that such restraints reduce highway deaths. None of the other choices focuses on the conclusion.

---

**QNo:- 119 ,Correct Answer:- A**

**Explanation:-**

If India becomes a developed country, then her citizens will not have to be bothered about their financial base as country would provide social security like all the other developed countries

**QNo:- 120 ,Correct Answer:- A**

**Explanation:-**

This option talks about individual interests which hampers the path of a common goal. Rest of the options can be eliminated as they change the meaning of the text

---

**QNo:- 121 ,Correct Answer:- A**

**Explanation:-**

Suppose he has x cows and y hens.

So,  $x + y = 59$  .....(1)

$4x + 2y = 190$ .....(2)

Solving these two equations, we get  $x = 36$ .

So option A is the answer

**QNo:- 122 ,Correct Answer:- C**

**Explanation:-**

When 24% discount is given, means 76% would be charged.

Hence 76% of SP = 779.

Solving this equation, we get SP = Rs. 1025.

---

**QNo:- 123 ,Correct Answer:- A**

**Explanation:-**

13 kg sugar costs 195. So 1 kg costs 15.

17 kg rice costs 544, so 1 kg costs 32.

21 kg wheat costs 336, so 1 kg costs 16.

Hence 21 kg sugar + 26 kg rice + 19 kg wheat =  $(21 \times 15) + (26 \times 32) + (19 \times 16) = 315 + 832 + 304 = \text{Rs. } 1451$ .



**QNo:- 124 ,Correct Answer:- D**

**Explanation:-**

Let the number be  $x$ .

Therefore,  $0.38x - 0.24x = 135.10$ ;

We get  $0.14x = 135.10$ ;

$x = 965$

Thus,  $0.40 \times 965 = 386$

---

**QNo:- 125 ,Correct Answer:- C**

**Explanation:-**

In the given question,  $SI = 11442 - 9535 = 1907$

$$\text{Thus, } 1907 = \frac{9535 \times 4 \times t}{100} \Rightarrow t = 5$$

**QNo:- 126 ,Correct Answer:- D**

**Explanation:-**

Since the total sum of A, B and C is not given and also total sum of E and F is also not given, so we cannot find the share of B.

---

**QNo:- 127 ,Correct Answer:- C**

**Explanation:-**

Let the aggregate marks be  $x$

Therefore,  $296 - 259 = 37$  will be 5% of the  $x$

$$\text{Thus, } \frac{5}{100}x = 37 \Rightarrow x = 740$$

**QNo:- 128 ,Correct Answer:- C**

**Explanation:-**

Using the formula to calculate % decrease as

$$\frac{R}{(100 + R)} \times 100$$

where  $R$  = percentage increase in price,

we get, Required % decrease in consumption =  $25/125 \times 100 = 20\%$

---

**QNo:- 129 ,Correct Answer:- C**

**Explanation:-**

Average of 5 consecutive odd numbers A, B, C, D and E is 41.

So C (Middle number) will be 41.

Hence A will be 37 and E will be 45.

So their product will be 1665.

---

**QNo:- 130 ,Correct Answer:- A**

**Explanation:-**

Let the age of mother be M and that of her daughter be D

$$\text{Therefore, } \frac{M + D}{2} = 42 \quad \text{and} \quad \frac{M}{D} = \frac{2}{1}$$

Solving the above equations, we get D = 28 yrs

---

**QNo:- 131 ,Correct Answer:- D**

**Explanation:-**

We know, Average speed = Total distance travelled / Total time taken

$$\text{Average speed} = \frac{45 + 50 + 25}{3 + 2 + \frac{25}{15}} = 18 \text{ kmph}$$

**QNo:- 132 ,Correct Answer:- D**

**Explanation:-**

Let the CP of the book be 100.

So old SP = 120. New CP = 80.

Hence new SP =  $80 \times 1.25 = 100$ .

So if difference in SP =  $120 - 100 = 20$ , CP = 100.

So if difference = 18, then CP =  $100/20 \times 18 = \text{Rs. } 90$ .

---

**QNo:- 133 ,Correct Answer:- C**

**Explanation:-**

Suppose he covers x km at 100 kmph.

So he covers  $170 - x$  at 50 kmph.

$$\text{So } \frac{x}{100} + \frac{170 - x}{50} = 2.$$

Solving this equation, we get x = 140.

So he covers 30 km at 50 kmph.

---

**QNo:- 134 ,Correct Answer:- B**

**Explanation:-**

$$\text{Time taken to cover 25 km} = \frac{25}{40} \times 60 = 37.5 \text{ min}$$

Remaining time =  $60 - 37.5 = 22.5$  min and remaining distance = 21 km

$$\text{Therefore, Speed} = \frac{21}{22.5} \times 60 = 56 \text{ kmph}$$

---

**QNo:- 135 ,Correct Answer:- C**

**Explanation:-**

Let speed of A be x and speed of B be y.

So  $385/y - 400/x = 5$ .....(1) and

$$400/y - 400/x = 50/7$$
.....(2)

Solving the two equations, we get x = 8 and y = 7.

---

**QNo:- 136 ,Correct Answer:- A**

**Explanation:-**

As per question, 3 faces are painted black. From a single face, we can have 4 such cubes at the centre which have one black coloured face. So in 3 faces, we will have 12 cubes which satisfy the given condition.

---

**QNo:- 137 ,Correct Answer:- B**

**Explanation:-**

$(n - 2)^3$  is the nucleus which will remain unpainted when all the outer sides of a cube are painted. Here,  $n$  is the number of smaller cubes on one edge of the cube.

Therefore, when a cube is cut into 64 smaller cubes, it will have 4 cubes on one edge and thus, the number of cubes that will remain unpainted is  $(4 - 2)^3 = 2^3 = 8$ .

**QNo:- 138 ,Correct Answer:- C**

**Explanation:-**

$$\frac{15 - x}{28 - x} = \frac{20 - x}{38 - x};$$

$$570 - 53x = 560 - 48x;$$

$$5x = 10;$$

$$x = 2$$

---

**QNo:- 139 ,Correct Answer:- A**

**Explanation:-**

Let the incomes of Gupta and Verma are  $9x$  and  $4x$  respectively and their expenditures are  $7y$  and  $3y$  respectively.

According to the condition,

$$9x - 7y = 2000 \dots\dots\dots(1)$$

$$4x - 3y = 2000 \dots\dots\dots(2)$$

solving both the equations, we get;

$$x = 8000, y = 10000,$$

$$\text{Gupta's expenditure is } 7 * 10,000 = 70000$$

**QNo:- 140 ,Correct Answer:- D**

**Explanation:-**

The questions with 4 choices each can be answered in 4 ways each and with 5 choices can be answered in 5 ways each.

$$\text{Hence number of ways} = 4 \times 4 \times 4 \times 5 \times 5 \times 5 \\ = 8000.$$

---

**QNo:- 141 ,Correct Answer:- C**

**Explanation:-**

As there is no repetition, lock 1 can have 10 numbers, lock 2 can have 9 numbers, lock 3 can have 8 numbers, total ways =  $10 \times 9 \times 8 = 720$ .

**QNo:- 142 ,Correct Answer:- D**

**Explanation:-**

First prize can be won by 8 students

Second prize can be won by 7 students

Third prize can be won by 6 students

$$\text{Total ways} = 8 \times 7 \times 6 = 336.$$

---

**QNo:- 143 ,Correct Answer:- B**

**Explanation:-**

(B) Side of the field along length

$$= \frac{1200}{30} = 40 \text{ m}$$

and the length of the diagonal

$$= \sqrt{30^2 + 40^2} = 50 \text{ m}$$

∴ Length of the fence

$$= 30 + 40 + 50 = 120 \text{ m}$$

∴ The job cost =  $120 \times 10 \text{ ₹}$

$$= \text{Rs. } 1200 \text{ ₹}$$

**QNo:- 144 ,Correct Answer:- C**

**Explanation:-**

If  $b$  is the breadth, then length is  $b + 8$

Therefore, new breadth will be  $b - 4$  and new length will be  $b + 15$ .

Since the area remains the same,

$$b(b + 8) = (b - 4)(b + 15),$$

Solving we get  $b = 20$  and length will be  $20 + 8 = 28$ .

**QNo:- 145 ,Correct Answer:- D**

**Explanation:-**

Let the quantity of water and acid initially be  $x$  gms each

Therefore, when 20gms of acid of poured into the test tube containing water, the new solution is:

Acid:  $x - 20$  water:  $x + 20$

When two-third of the water solution is poured into the acid, the new solution is:

Acid:  $(x - 20) + (x + 20) \frac{2}{3}$  water:  $(x + 20)/3$

As the final ratio of acid: water is 4:1 i.e.,  $(x - 20) + (x + 20) \frac{2}{3} = 4(x + 20)/3 \Rightarrow x = 100 \text{ gm}$

**QNo:- 146 ,Correct Answer:- D**

**Explanation:-**

Let  $A$  be the age of eldest son,  $B$  be the age of second son,  $C$  be the age of youngest son,  $F$  be the age of the father and  $M$  be the age of mother.

Therefore,  $20/100(F + A/2) = A + B + C/3$

$$\Rightarrow 3F = 7A + 10B + 10C \text{ and } M + C = 39$$

We know that  $F = 26$  yrs, thus,  $7A + 10B + 10C = 78$  and  $M + C = 39$

There are 4 variables and two equations, thus the value of  $B$  cannot be determined.

**QNo:- 147 ,Correct Answer:- A**

**Explanation:-**

Let the monthly rent be  $x/-$

$$\text{Therefore, annual amount left after repairs} = 12(x - 12.5\%x) \Rightarrow 12(x - \frac{25}{200}x) = \frac{21}{2}x$$

Also, 10% realization on investments means 10% of 5 lakhs or 50000/-

$$\text{Thus, } \frac{21}{2}x - 1660 = 50000 \Rightarrow x = 4920/-$$

**QNo:- 148 ,Correct Answer:- A**

**Explanation:-**

Let the value of the consignment be x

$$\text{Therefore, } \frac{2}{3} \times x \times \frac{5}{100} + \frac{1}{3} \times x \times \left( \frac{-2}{100} \right) = 400 \Rightarrow x = 15000/-$$

i.e 1st option

---

**QNo:- 149 ,Correct Answer:- C**

**Explanation:-**

The net discount given by first shopkeeper is  $30 + 6 - 30 \times 6/100 = 34.2\%$ .

While net discount by second shopkeeper is  $20 + 16 - 20 \times 16/100 = 32.8\%$ .

So required answer is  $1.4\%$  of 700 = 9.80

i.e, 3rd option.

---

**QNo:- 150 ,Correct Answer:- A**

**Explanation:-**

Let x be the marked price,

$$\text{So } x - 32 = 320 \times 1.15 \Rightarrow x = 400.$$

So required value is

$$400 = 320 (1 + \text{profit}/100),$$

So profit is 25%

---

**QNo:- 151 ,Correct Answer:- C**

**Explanation:-**

After 45 Min = 36 km is travelled by train which started from A,

Now applying concept of Relative Speed.

$$\frac{196}{48+50} = 2 \text{ h.}$$

$$\text{Distance from A} = 36 + 2 \times 48 = 132 \text{ km.}$$

**QNo:- 152 ,Correct Answer:- D**

**Explanation:-**

Increase in the volume of the cylindrical tub

$$= \pi \times 12^2 \times 6.75.$$

$$\text{This is equal to the volume of the spherical ball } \Rightarrow \pi \times 12^2 \times 6.75 = \frac{4}{3} \pi \times r^3 \Rightarrow r = 9 \text{ cm}$$

---

**QNo:- 153 ,Correct Answer:- C**

**Explanation:-**

Let diameter of the third ball be x.

$$\therefore (3)^3 = (1.5)^3 + (2)^3 + (x)^3.$$

Solving this equation, we get x = 2.5 cm.

---

**QNo:- 154 ,Correct Answer:- C**

**Explanation:-**

Ratio of speeds of A : B = 5 : 3

$\Rightarrow$  If the start is of 2m, then race is of 5m, so if start is of 80m, then race is of

$$\frac{5}{2} \times 80 = 200 \text{ m.}$$

---

**QNo:- 155 ,Correct Answer:- B**

**Explanation:-**

Probability of getting a 1 or 3 in the throw of a dice =  $\frac{2}{6}$  and not getting a 1 or

$$3 = \frac{4}{6}.$$

$\therefore$  probability of choosing a black ball is  $\frac{2}{6} \times \frac{3}{7} + \frac{4}{6} \times \frac{4}{7} \Rightarrow \frac{6}{42} + \frac{16}{42} \Rightarrow \frac{11}{21}$

**QNo:- 156 ,Correct Answer:- A**

**Explanation:-**

Probability of A hitting the target =  $\frac{4}{5} \Rightarrow P(\bar{A}) = \frac{1}{5}$

Probability of B hitting the target =  $\frac{3}{4} \Rightarrow P(\bar{B}) = \frac{1}{4}$

Probability of C hitting the target =  $\frac{2}{3} \Rightarrow P(\bar{C}) = \frac{1}{3}$

We have 2 cases: - 1. All 3 hit      2.

Exactly 2 persons hit

$$1. P(\text{all 3 hit}) = \frac{4}{5} \times \frac{3}{4} \times \frac{2}{3} = \frac{2}{5}$$

$$2. \text{ Exactly 2 hit} = \frac{4}{5} \times \frac{3}{4} \times \frac{1}{3} + \frac{4}{5} \times \frac{2}{3} \times \frac{1}{4} + \frac{3}{4} \times \frac{2}{3} \times \frac{1}{5} \\ \Rightarrow \frac{1}{5} + \frac{2}{15} + \frac{1}{10} \Rightarrow \frac{6+4+3}{30} = \frac{13}{30}$$

$$\text{So required probability} = \frac{2}{5} + \frac{13}{30} \Rightarrow \frac{25}{30} = \frac{5}{6}.$$

**QNo:- 157 ,Correct Answer:- C**

**Explanation:-**

Volume of cistern = 50  $\Rightarrow l \times b \times h = 50$

$$\Rightarrow 4.5 \times 3 \times h = 50 \quad \Rightarrow h = \frac{100}{27}$$

$\therefore$  weight of lead required

$$= 2(4.5 + 3) \times \frac{100}{27} \times 27 + 3 \times 4.5 \times 27$$

$$= 1864.5 \text{ kg.}$$

**QNo:- 158 ,Correct Answer:- A**

**Explanation:-**

Let the radius be  $r$ ,

$$2\pi r = 176 \text{ cm;}$$

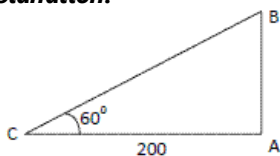
$$\Rightarrow r = 28 \text{ cm}$$

Now, volume of liquid in the bowl =  $\frac{1}{2} \times \frac{2}{3} \times \pi \times 28^3$

Volume of smaller bowls =  $\frac{2}{3} \times \pi \times 2^3$

$$\text{Number of persons served} = \left( \frac{1}{2} \times \frac{2}{3} \times \pi \times 28^3 \right) / \left( \frac{2}{3} \times \pi \times 2^3 \right) = 1372$$

**QNo:- 159 ,Correct Answer:- C**

**Explanation:-**

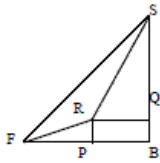
$$\frac{AB}{AC} = \tan 60, AC = 200 \quad \Rightarrow AB = 200 \tan 60$$

$$\Rightarrow AB = 200\sqrt{3}$$

$$\therefore \text{speed of balloon is } \frac{200\sqrt{3}}{90} = 3.87 \text{ m/s}$$

**QNo:- 160 ,Correct Answer:- A**

**Explanation:-**



$\angle SFB = 45^\circ$ ,  $\angle RFP = 30^\circ$  and  $\angle SRQ = 60^\circ$ . Also,  $FR = 1$  km. Suppose  $SQ = y$  and  $PB = x$ . In  $\triangle FRP$ ,  $RP = \frac{1}{2}$  and  $FP = \frac{\sqrt{3}}{2}$ . Since  $FB = SB$ ,  $x + \frac{\sqrt{3}}{2} = y + \frac{1}{2}$ . In  $\triangle SRQ$ , since  $\angle SRQ = 60^\circ$ ,  $RQ = x = y/\sqrt{3}$ . Solving these equations gives  $x = \frac{1}{2}$ . Using this value, we get  $SB = 1.366$ .

---

**QNo:- 161 ,Correct Answer:- D**

**Explanation:-**

B can do the work in 20 days.

B and C can do the work in 12 days

$\Rightarrow$  C alone would take 30 days.

So, their wage distribution ratio would be  $1/32 : 1/20 : 1/30 : 1/24$

$\Rightarrow 30 : 48 : 32 : 40$ .

So share of C =  $30/150 \times 25 = 16/3$ .

**QNo:- 162 ,Correct Answer:- D**

**Explanation:-**

3 skilled workmen's one day work =  $1/20$

5 skilled workmen's one day work =  $1/30$

Therefore,

When the work together, their one day work  
=  $1/20 + 1/30 = 5/60 = 1/12$

Therefore, total time taken = 12 days

---

**QNo:- 163 ,Correct Answer:- A**

**Explanation:-**

If both pipes are working together, they would take  $\frac{1}{12} + \frac{1}{16} \Rightarrow \frac{7}{48} \Rightarrow \frac{48}{7}$  min to fill the cistern.

Let us say that tank was of capacity 96 litres

$\Rightarrow$  first pipe would fill 8 litres/min and second pipe would fill 6 litres/min.

When clogged, 1<sup>st</sup> would fill 7 litres/min and second would fill 5 litres/min

$\Rightarrow$  cistern is filled in 3 min  $\Rightarrow (8 + 6) \times 3 = 42$  litres Remaining =  $96 - 42 = 54$  litres.

This would take  $\frac{54}{7+5} = 4.5$  min to fill.

So answer is 4.5 min.

**QNo:- 164 ,Correct Answer:- A**

**Explanation:-**

Just because one (black clouds) follows the other (thunder) we cannot say that thunder is the cause of rain. So too we cannot say that black cloud is the cause of thunder. If things are true in one direction, they need not be true in the reverse direction.

---

**QNo:- 165 ,Correct Answer:- B**

**Explanation:-**

*If workers are motivated when they participate in the management of companies then the obvious conclusion is that the workers should be allowed to participate in the management of companies. Here the productivity of individuals is not talked of.*

**QNo:- 166 ,Correct Answer:- A**

**Explanation:-**

*Power consumption in a family would increase due to increase in electronic and electric gadgets used in the house, children studying through the night, etc. It would not be due to a lot of development in the society. Just because power rates have become cheaper every family will hardly keep the lights on throughout the night or some such thing which will increase consumption.*

---

**QNo:- 167 ,Correct Answer:- D**

**Explanation:-**

*As each manufactures a world for himself and the world is neither good nor evil, each person will find the world good or evil as he manufactures it.*

**QNo:- 168 ,Correct Answer:- C**

**Explanation:-**

*Option 2 is not implicit as it is possible that they are motivated but the level of motivation has to be increased further to improve the sales.*

---

**QNo:- 169 ,Correct Answer:- B**

**Explanation:-**

*Adequate measures by traffic management were taken and hence the heavy rains did not disturb the traffic. Rains can affect traffic movement. Hence, only II is implicit.*

**QNo:- 170 ,Correct Answer:- D**

**Explanation:-**

*Message is for public to follow so both are valid assumptions here.*

---

**QNo:- 171 ,Correct Answer:- B**

**Explanation:-**

*Generalization is vague here. Hence, assumption I can't be implicit.*

**QNo:- 172 ,Correct Answer:- A**

**Explanation:-**

*Parents' wishes can be vague or influenced. Option 2 is baseless. How is fulfilling role concerned with the question of religion?*

---

**QNo:- 173 ,Correct Answer:- B**

**Explanation:-**

*Option 1 talks of miserable conditions which could be anything and not necessarily the population problem.*

**QNo:- 174 ,Correct Answer:- C**

**Explanation:-**

*Bold measures may be right or wrong.*



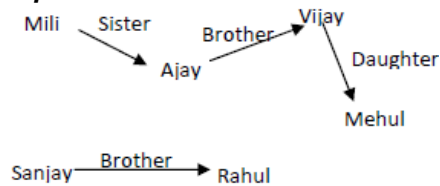
**QNo:- 175 ,Correct Answer:- A**

**Explanation:-**

Mass copying is not a generalized occurrence. Open book cannot guarantee 100% marks as the students needs to know where to find the answer in the open books.

**QNo:- 176 ,Correct Answer:- A**

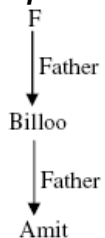
**Explanation:-**



As no relation is there between above two diagrams, thus, we can't say who is sanjay's uncle.

**QNo:- 177 ,Correct Answer:- A**

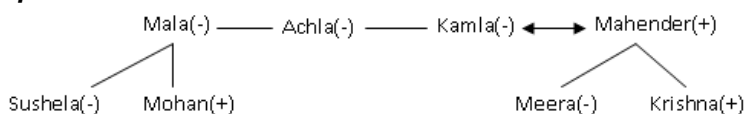
**Explanation:-**



So the relationship between Billoo and Amit is Father and Son

**QNo:- 178 ,Correct Answer:- B**

**Explanation:-**



Achla is sister in law of Mahender

**QNo:- 179 ,Correct Answer:- B**

**Explanation:-**

Sequence will be D B A E C  
So the house in the middle is A

**QNo:- 180 ,Correct Answer:- D**

**Explanation:-**

Every odd letter is the sequence of ABCD ..... XYZ and every even letter is the sequence of ZYX..... CBA.  
So the answer will be Q (20<sup>th</sup> letter from Left)

**QNo:- 181 ,Correct Answer:- B**

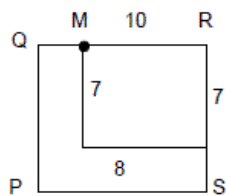
**Explanation:-**

P, Q, R, S reach diagonally opposite positions. When S walks one side clockwise, it reaches where initially R was placed. So S is at north east corner.

**QNo:- 182 ,Correct Answer:- A**

**Explanation:-**

After following the instructions, we get the following diagram



So QM = 2km.

**QNo:- 183 ,Correct Answer:- A**

**Explanation:-**

P after traveling will reach mid-point of Q and R and same is the case with S, Therefore they will reach at same point. we get the answer as 1<sup>st</sup> option.

**QNo:- 184 ,Correct Answer:- B**

**Explanation:-**

After analysing the given information, we get the answer as 2<sup>nd</sup> option as all P, Q, R and S occupy the mid point positions of the respective sides. So R would be on the left of Q.

**QNo:- 185 ,Correct Answer:- A**

After analysing the given information, following table can be prepared.

	Green	Yellow	Pink	Red	Blue	Black	White	Gray	Blue	Green
A	x	x	√	x	x	x	√	x	x	x
B	x	x	x	√	x	x	x	x	√	x
C	x	√	x	x	x	x	x	x	x	√
D	x	x	x	x	√	x	x	√	x	x
E	√	x	x	x	x	√	x	x	x	x
	Shirts					Shorts				

**Explanation:-** D wore blue shirt and grey short.

**QNo:- 186 ,Correct Answer:- B**

**Explanation:-**

After analysing the given information, following table can be prepared.

	Green	Yellow	Pink	Red	Blue	Black	White	Gray	Blue	Green
A	x	x	√	x	x	x	√	x	x	x
B	x	x	x	√	x	x	x	x	√	x
C	x	√	x	x	x	x	x	x	x	√
D	x	x	x	x	√	x	x	√	x	x
E	√	x	x	x	x	√	x	x	x	x
	Shirts					Shorts				

A wore white short.

**QNo:- 187 ,Correct Answer:- C**

**Explanation:-**

After analysing the given information, following table can be prepared.

	Green	Yellow	Pink	Red	Blue	Black	White	Gray	Blue	Green
A	x	x	√	x	x	x	√	x	x	x
B	x	x	x	√	x	x	x	x	√	x
C	x	√	x	x	x	x	x	x	x	√
D	x	x	x	x	√	x	x	√	x	x
E	√	x	x	x	x	√	x	x	x	x
Shirts					Shorts					

C wore yellow shirt.

**QNo:- 188 ,Correct Answer:- B**

**Explanation:-**

After analysing the given information, following table can be prepared.

	Green	Yellow	Pink	Red	Blue	Black	White	Gray	Blue	Green
A	x	x	√	x	x	x	√	x	x	x
B	x	x	x	√	x	x	x	x	√	x
C	x	√	x	x	x	x	x	x	x	√
D	x	x	x	x	√	x	x	√	x	x
E	√	x	x	x	x	√	x	x	x	x
Shirts					Shorts					

B wore blue short.

**QNo:- 189 ,Correct Answer:- A**

**Explanation:-**

After analysing the given information, we get the following pattern

Mr Bhagat
Mr Ashokan
Mr Gaurav
Mr Lokesh
Mr Rakesh

Hence Mr Bhagat lives in the topmost flat.

**QNo:- 190 ,Correct Answer:- D**

**Explanation:-**

After analysing the information given, we get the pattern as,

Raju, Sohan, Kittu, Mohan, Shyam.

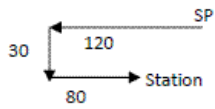
S  
↑

Hence, Shyam is on the extreme right.

**QNo:- 191 ,Correct Answer:- C**

**Explanation:-**

The diagram of the arrangement would be

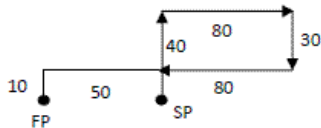


So answer is South – West.

**QNo:- 192 ,Correct Answer:- D**

**Explanation:-**

The diagram of the arrangement would be



So Manu is 50 km away from his starting point.

**QNo:- 193 ,Correct Answer:- D**

**Explanation:-**

As per the given information, we can draw the following table:

Name	Place	Hobbies
Ravi	Allahabad	Travelling, Reading Comics
Hari	Lucknow	Stamp Collection, Coin collection
Manu	Kanpur	-
Jatin	Lucknow	Coin collection, Listening Music

Jatin's hobbies are coin collection and listening to music. Answer is 4<sup>th</sup> option.

**QNo:- 194 ,Correct Answer:- B**

**Explanation:-**

As per the given information, we can draw the following table:

Name	Place	Hobbies
Ravi	Allahabad	Travelling, Reading Comics
Hari	Lucknow	Stamp Collection, Coin collection
Manu	Kanpur	-
Jatin	Lucknow	Coin collection, Listening Music

Ravi's hobbies are travelling and reading comics. Answer is 2<sup>th</sup> option.

**QNo:- 195 ,Correct Answer:- A**

**Explanation:-**

3<sup>rd</sup> of the month is Monday.

So  $21 + 5 = 26^{\text{th}}$  of the month will be Wednesday.

**QNo:- 196 ,Correct Answer:- C**

**Explanation:-**

If uncle's visit is on the 63rd day from Tuesday, then that day will be Tuesday (Multiple of 7), 64<sup>th</sup> day would be Wednesday.

---

**QNo:- 197 ,Correct Answer:- D**

**Explanation:-**

Given information can be shown as follows:

Position number from front:

1... 14 ... 23 ... 32 ... 48  
Sadiq Jane Joseph

So the number of persons between Sadiq and Jane is 8.

**QNo:- 198 ,Correct Answer:- B**

**Explanation:-**

Fruit Chocolate =  $3 \times$  Milk Chocolate,

Let Milk Chocolate = 14, Fruit Chocolate = 42

Milk Chocolate =  $14 \times \frac{1}{7} = 2$  and

Fruit Chocolate =  $42 \times \frac{1}{14} = 3$ .  $3 > 2$ .

Hence Fruit Chocolate.

---

**QNo:- 199 ,Correct Answer:- A**

**Explanation:-**

No. divisible by 5 and those which have 5 as one of the digits are 5, 15, 25, 35, 45, 50, 51, 52, 53, 54, 55, 56, 57, 58, 59, 10, 20, 30, 40, 60.

Hence answer is  $60 - 20 = 40$

**QNo:- 200 ,Correct Answer:- A**

**Explanation:-**

Different letters are P A N C H T R.

Hence answer is 7.

---